

Professional 3/4" Air Impact Wrench

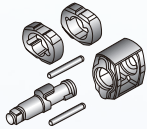
SUMAKE
MAKE JOBS BETTER THAN EVER

High power to weight ratio paired with robust dependability



Application

Engineered for power and efficiency, this versatile pneumatic wrench is the perfect solution for truck, cars, generators, and professional workshops. Super lightweight and compact features offer great convenience and comfort to operator.



Powerful torque

Featuring a Twin-Hammer mechanism for maximum power and consistently smooth, balanced impact.



Light Weight
3.39 kg

Durable

Made from high-grade Japanese steel, the anvil ensures exceptional strength and long-lasting performance.

Composite housing design

Reduces overall weight while providing superior impact resistance and increased durability.



Side Exhaust

Inner trigger or optional outer trigger

Easy-Access F/R regulator design

2 speed setting for forward
1(Full) speed setting for reverse.



Flexible handle design

Left or right, your choice.

360° air inlet

Eliminates hose twisting and kinks for seamless operation.

ST-IW9462 3/4" Dr.

Max Torque: 2,034Nm (1,500 ft-lb)



ST-IW9463 3/4" Dr.

Max Torque: 2,034Nm (1,500 ft-lb)



Back Forward and Reverse regulator

2 speed setting for forward
1(Full) speed setting for reverse.



Handle Exhaust

Specification:

★ Recommend Air Pressure 6.2 bar (90psi)

Model No.	Square Drive (inch)	Capacity Bolt Size		Free Speed (r.p.m)	Max. Torque		Overall Length		Air Inlet (PT)	Air Hose (I.D.)	Air Consumption		Net Weight		Packing Pcs/Ctn/G.W/Cuft (kg)
		mm	in		Nm	ft-lb	mm	in			l/min	cfm	kg	lbs	
ST-IW9462	3/4	M30	1-3/16	7,500	2,034	1,500	313	12.3	3/8"	1/2"	540	19	3.39	7.47	2Pcs/Ctn/7.8/1'
ST-IW9463	3/4	M30	1-3/16	7,500	2,034	1,500	217	8.5	3/8"	1/2"	540	19	3.28	7.23	4Pcs/Ctn/14.1/1.21'

SUMAKE Industrial Co., Ltd.

4F, No.351, Yangguang St., Neihu District, Taipei, Taiwan, Zip:114-91
Tel: 886-2-2659-3500 Fax: 886-2-2659-3700
http://www.sumake.com e-mail: sales@sumake.com.tw



Certificate TW04/02301



XPST-W25-1007