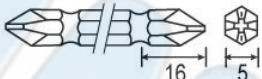



### ※Specifications

MODEL		ED-B630L2/C	ED-B630LH2/C	ED-B650L2/C	ED-B630P2/C	ED-B630PH2/C	ED-B650P2/C
Input voltage (AC)		AC-220~240V 50/60HZ 0.2A					
Power Consumption		48W					
Torque	(kgf.cm)	10~30	10~30	20-50	10~30	10~30	20-50
	(Lbf.in)	8.67-26.02	8.67-26.02	17.36-43.4	8.67-26.02	8.67-26.02	17.36-43.4
	(N.m)	0.98-2.94	0.98-2.94	1.96-4.9	0.98-2.94	0.98-2.94	1.96-4.9
Repeatable Torque Accuracy (%)		±3%					
Torque Adjustment		Stepless					
Unloaded Rotation Speed (R.p.m) ±10%	HI	1200	2000	1200	1200	2000	1200
Screw Size Dia	Machine screw(mm)	2.6~4.0	2.6~4.0	4.0~5.0	2.6~4.0	2.6~4.0	4.0~5.0
	Tapping screw(mm)	2.6~3.5	2.6~3.5	≤4	2.6~3.5	2.6~3.5	≤4
Weight (g)		810					
Length (mm)		305					
Model of Torque Fixing Ring		EAA-TL7C, EAA-TL7S					
Model of Suspension Rack		EAA-HD2L					
Bit Type		<div style="display: flex; justify-content: space-around; align-items: center;"> <div style="text-align: center;"> <b>A</b> HEX 5mm   </div> <div style="text-align: center;"> <b>F</b> HEX 6.35mm   </div> </div>					

\* 1N.m=10.2Kgf.cm 1N.m=8.85Lbf.in

### ※Accessories

#### 1. Bit Type :

- No. 00 . . . Bit use in dia. 1.3~1.8mm screw
- No. 0 . . . . Bit use in dia. 1.8~2.0mm screw
- No. 1 . . . . Bit use in dia. 2.0~2.6mm screw
- No. 2 . . . . Bit use in dia. 3.0~4.0mm screw

ED-B630L2/C, ED-B630P2/C with BIT 2# 2 Pcs. .

ED-B650L2/C, ED-B650P2/C with BIT 2# 2 Pcs. .

ED-B630LH2/C, ED-B630PH2/C with BIT 2# 2 Pcs. .

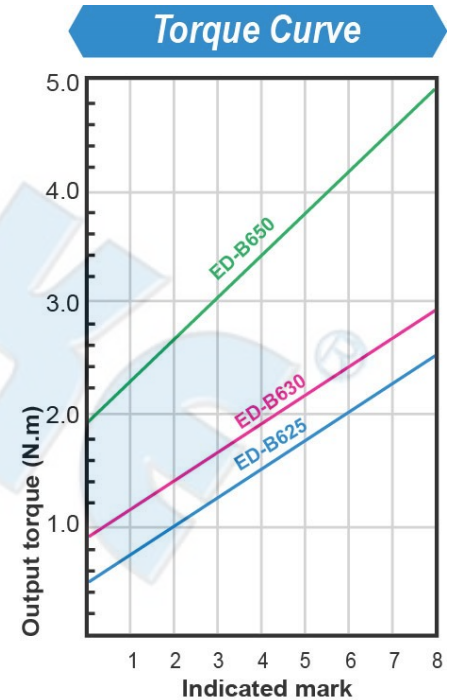
2. Suspension rack and Torque fixing ring acceptable for use with the tool are available from SUMAKE catalogue.

3. Torque Fixing Ring EAA-TL7C(S) 1 Pcs.

### ✂ Torque Adjustment Operation

To adjust the torque on these screwdrivers. Proceed as follows:

1. Determine the torque output of the tool by checking a tightened fastener with a torque wrench.
2. Increase or decrease the torque by turning the torque adjusting nut on the nose of the driver. Turning the nut clockwise to a higher number on the torque scale increase torque output while rotating the nut counterclockwise to a lower number decreases the torque output.
3. Check the adjustment with a torque wrench. A number of factors will affect torque output from one job to another. Final torque adjustment should be made at the job through a series of gradual increase. Always start below the desired torque and work upward.
4. Adjust the bit torque by changing the driving in length of the adjust nut at the end.
5. The relationship between torque scale on nut and bit torque is as shown in the torque diagram. The figures of torque scale do not indicate bit torque actual values. However, the clamping torque of screw itself is different from type, size, material of the screw and the material of its mating part. Use it as standard to obtain an appropriate clamping torque.
6. The (Return torque method) in which once-clamped screw is returned with torque wrench or the like is available as one of torque control methods however, note that the measured values by the return torque method generally appear in 10%~30% lower than the actually clamping torque.
7. The torque tester measures the torque of screwdriver. The clamping torque of screw itself is different from the clamped conditions. Understand the correlation between clamping torque values and the torque tester values perform the torque control properly.



### CAUTION

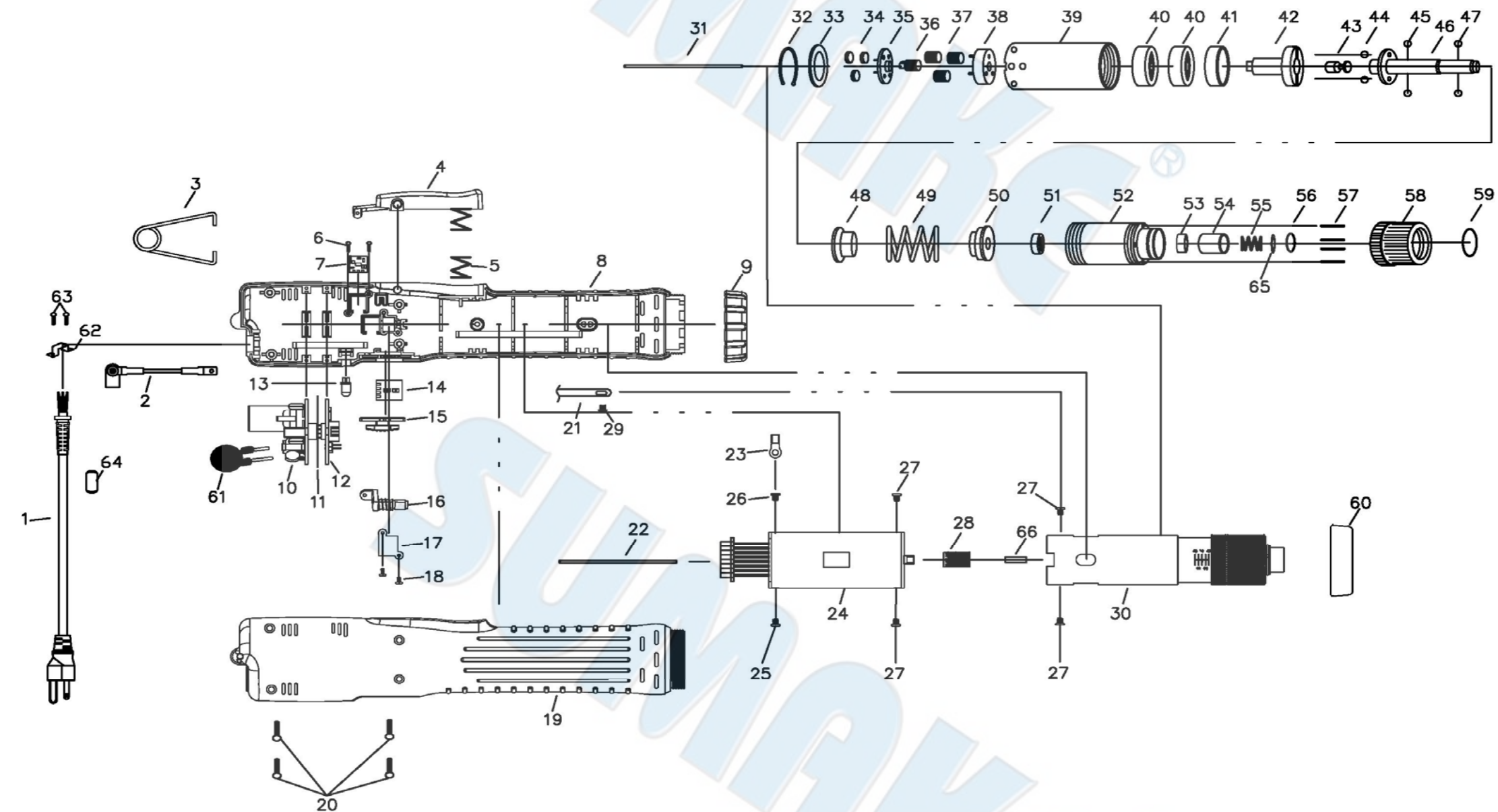
1. Also in reverse rotation, the clutch is shut-off in such manner as in normal rotation, stopping the motor running accordingly, when the screw tightened at a large torque, set it to a higher torque scale.
2. The numbers from zero to eight on the torque scale are reference number only and not an indication of actual torque output.

**Our company reserves the right to modify the product without prior notice.**

ED-B630L(P)(LH)(PH)650L(P)2/C-S-2401C-K2

# ED-B630L2/C, ED-B650L2/C

BRUSHLESS FULL AUTO SHUT-OFF AC220, LEVER-START, ELECTRIC SCREWDRIVER (DIRECT PLUG IN)



# ED-B630L2/C, ED-B650L2/C

## BRUSHLESS FULL AUTO SHUT-OFF AC220, LEVER-START, ELECTRIC SCREWDRIVER (DIRECT PLUG IN)

### PARTS LIST

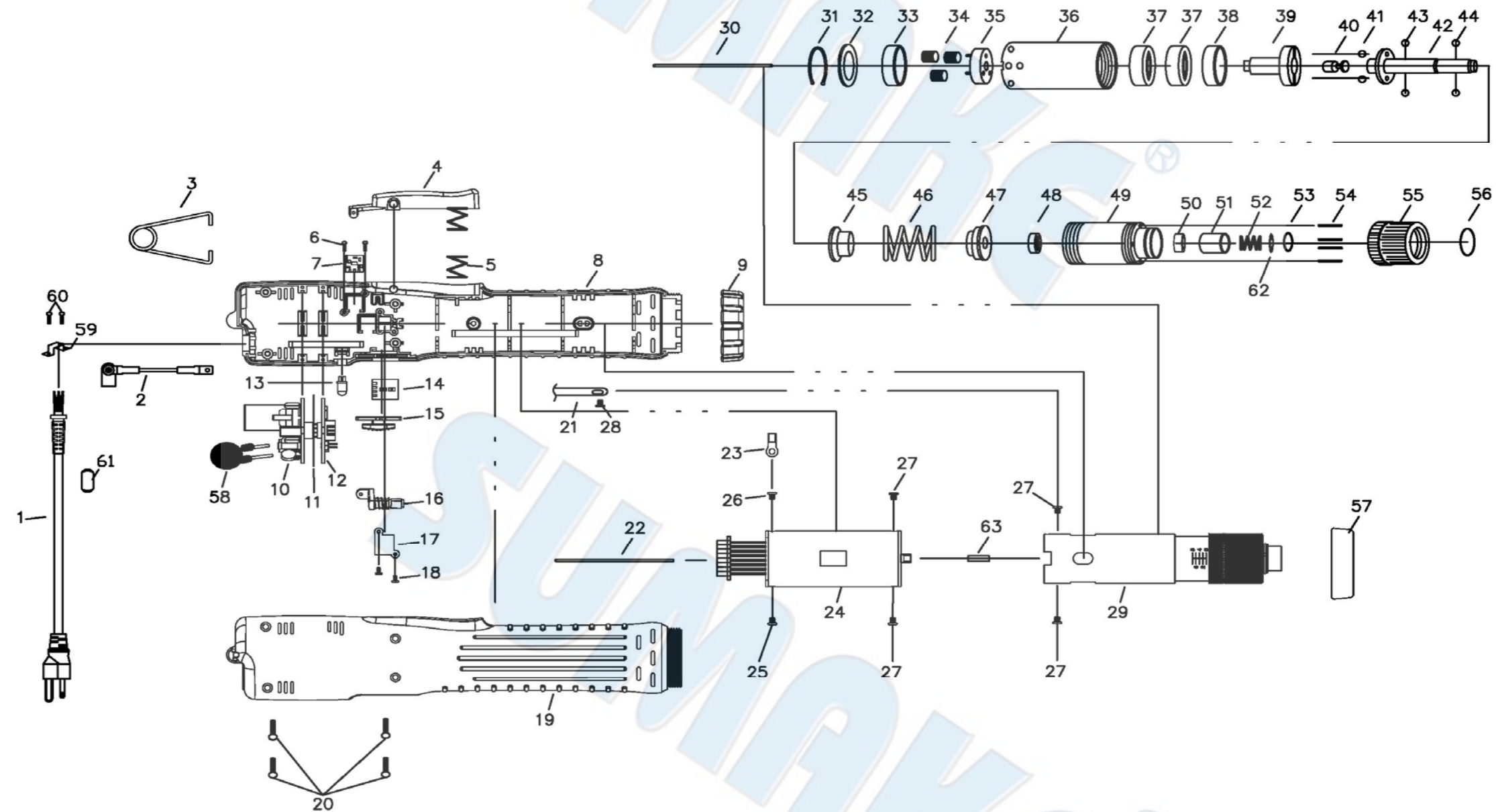
No.	Parts No.	Description	Q'ty
1	EPAM30004-E	Cord Assy-Europe Plug 10ft	1
	EPAM30004-U	Cord Assy-British Plug 10ft	1
2	EPP12104-8	3cm Retaining Clip	1
3	EPCJ20012	Suspension Hook	1
4	EPCC50023	Trigger	1
5	EPCK28031-1	Trigger Spring	1
6	EPCH30201	Screw TP2x4mm	2
7	EPEG31420-11F	Start Switch	1
8	EPC40780F	Housing-Underside	1
9	EPCD91033	Coupler	1
10	EPEG31136	P.C.B.	1
11	EPW50103-7	Insulating Washer	1
12	EPEG31137L	P.C.B.	1
13	EPE33105-1	Led Light	1
14	EPEG31421-17F	P.C.B.-Changeover	1
15	EPCI50212-14	F/R Switching Element For ED-B630L2/C	1
	EPCI50212-15	F/R Switching Element For ED-B650L2/C	1
16	EPCE50152-7	Push Rod	1
17	EPCE80001	Fixture	1
18	EPCH30200	Screw For Fixture	2
19	EPCA93121	Housing-Upside	1
20	EPCH20102	Screw For Housing	4
21	EPCH30681-5	Grounding Means	1
22	EPMI30511-15	Pilot Rod	1
23	EPE30180-2	Resistance Ntc	1
24	EPMO60005CE	Motor Assembly	1
25	EPCH20102-24	Screw For Motor	1
26	EPCH30201-4	Screw For Motor & Ntc	1
27	EPCH20102-31	Screw For Motor	4
28	EPM11326	Gear	1
29	EPCH20102-11	Screw	1
30	EPGZ84002-1A-01	Clutch Assembly For ED-B630L2/C Hex. 5mm Type (Opt.)	1
	EPGZ84002-1B-01	Clutch Assembly For ED-B630L2/C Hex. 6.35mm Type (Opt.)	1
	EPGZ84002-1B9.5-01	Clutch Assembly For ED-B630L2/C Hex. 6.35-B9.5mm Type	1
	EPGZ84002-3A-01	Clutch Assembly For ED-B650L2/C Hex. 5mm Type (Opt.)	1
	EPGZ84002-3B-01	Clutch Assembly For ED-B650L2/C Hex. 6.35mm Type (Opt.)	1
	EPGZ84002-3B9.5-01	Clutch Assembly For ED-B650L2/C Hex. 6.35-B9.5mm Type	1
31	EPMI30511-14	Pilot Rod	1

No.	Parts No.	Description	Q'ty
32	EPGK21181	"C" Ring	1
33	EPGI21191	Iron Washer	1
34	EPGH92238	Idle Gear	3
35	EPGG21514	Gear Seat	1
36	EPG20112	Central Gear	1
37	EPGH92238-1	Idle Gear	3
38	EPGG21514-1	Gear Seat	1
39	EPGA81101-1	Gear Case	1
40	EPGN21251	Main Bearing	2
41	EPGW21532	Iron Ring	1
42	EPGC90305A	Cam	1
43	EPGU30371	Stop Pilot	1
44	EPGP30361	Steel Balls Φ5	3
45	EPGD91408-2	Shaft For Hex. 5mm Type (Opt.)	1
	EPGD91404-4	Shaft For Hex. 6.35mm Type	1
46	EPGP30351	Steel Balls Φ4	2
47	EPGP21291A	Steel Balls Φ3 For Hex. 5mm Type (Opt.)	2
	EPGP21291B	Steel Balls Φ2.5 For Hex. 6.35mm Type	2
48	EPGF90324-1	Waring Plate	1
49	EPGE92389	Waring Spring For ED-B630L2/C	1
	EPGE92388	Waring Spring For ED-B650L2/C	1
50	EPGY21321	Waring Spring Base	1
51	EPGN30434	Bearing	1
52	EPG20206-1	Clutch Case	1
53	EPG21305-1	Spacer	1
54	EPGJ21351-3	Bit Sleeve	1
55	EPGO21341	Bit Spring	1
56	EPGQ21361	"C" Ring	1
57	EPGL21371	Torque Adjust Pin	4
58	EPGM21381	Torque Adjust Ring	1
59	EPGS21391	"C" Ring	1
60	EPPE02003-3N	Soft Cover	5
61	EPE31308-3	Inductance	1
62	EPCH20102-2	Wire Clamp	1
63	EPCH20102-3	Screw For Wire Clamp	2
64	EPED30004	Filter	1
65	EPG21438	Washer	1
66	EPMG30081-2	Pilot Rod	1



# ED-B630LH2/C

BRUSHLESS FULL AUTO SHUT-OFF AC220, LEVER-START, HIGH SPEED ELECTRIC SCREWDRIVER (DIRECT PLUG IN)



# ED-B630LH2/C

## BRUSHLESS FULL AUTO SHUT-OFF AC220, LEVER-START, HIGH SPEED ELECTRIC SCREWDRIVER (DIRECT PLUG IN)

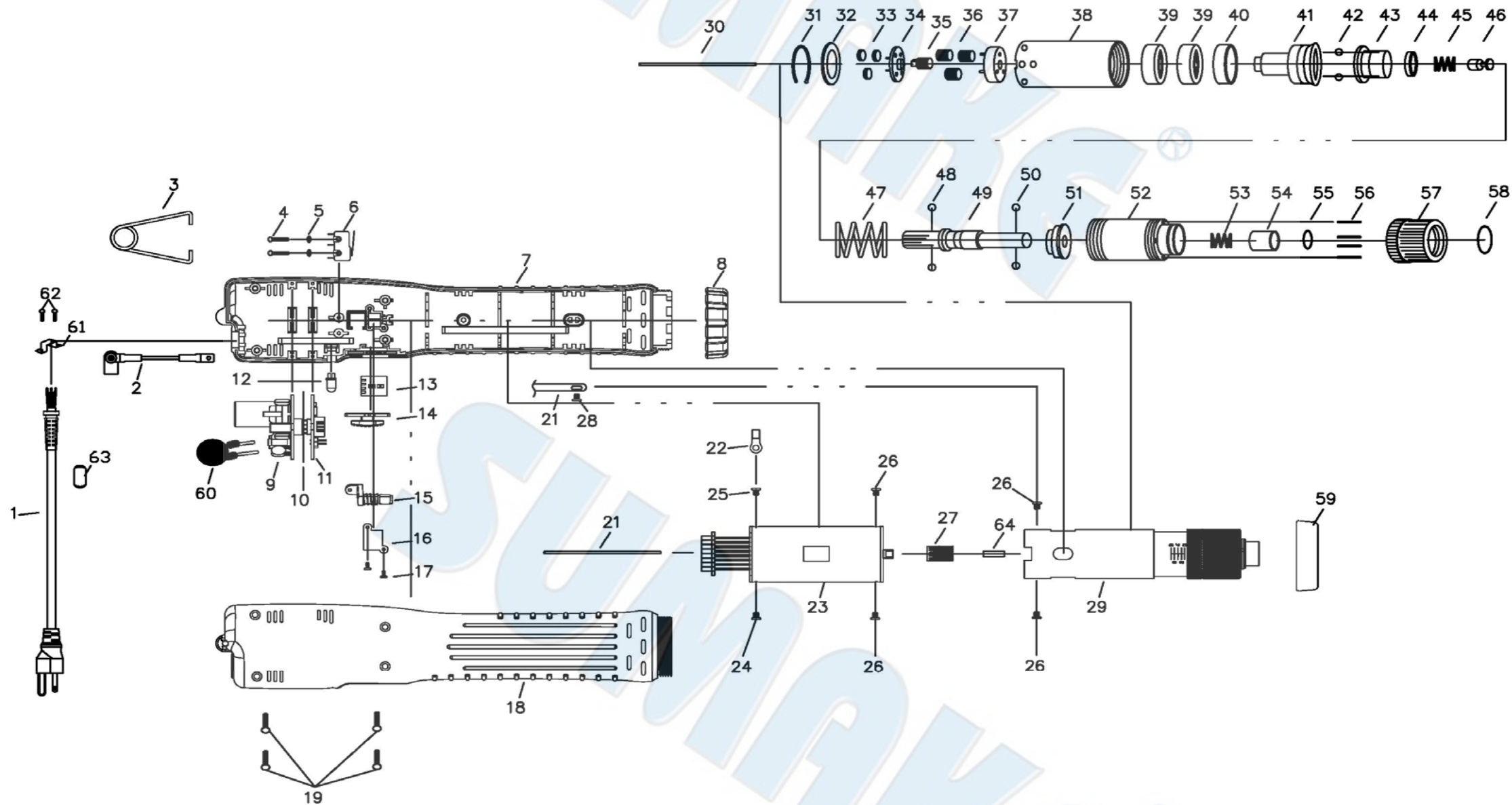
### PARTS LIST

No.	Parts No.	Description	Q'ty
1	EPAM30004-E	Cord Assy-Europe Plug 10ft	1
	EPAM30004-U	Cord Assy-British Plug 10ft	1
2	EPP12104-8	3cm Retaining Clip	1
3	EPCJ20012	Suspension Hook	1
4	EPCC50023	Trigger	1
5	EPCK28031-1	Trigger Spring	1
6	EPCH30201	Screw TP2x4mm	2
7	EPEG31420-11F	Start Switch	1
8	EPC40780F	Housing-Underside	1
9	EPD91033	Coupler	1
10	EPEG31136	P.C.B.	1
11	EPW50103-7	Insulating Washer	1
12	EPEG31137L	P.C.B.	1
13	EPE33105-1	Led Light	1
14	EPEG31421-17F	P.C.B.-Changeover	1
15	EPCI50212-14	F/R Switching Element For ED-B630LH2/C	1
16	EPCE50152-7	Push Rod	1
17	EPCE80001	Fixture	1
18	EPCH30200	Screw For Fixture	2
19	EPCA93121	Housing-Upside	1
20	EPCH20102	Screw For Housing	4
21	EPCH30681-5	Grounding Means	1
22	EPMI30511-15	Pilot Rod	1
23	EPE30180-2	Resistance Ntc	1
24	EPMO60005-1CE	Motor Assembly	1
25	EPCH20102-24	Screw For Motor	1
26	EPCH30201-4	Screw For Motor & Ntc	1
27	EPCH20102-31	Screw For Motor	4
28	EPCH20102-11	Screw	1
29	EPGZ84002-2FA-01	Clutch Assembly For ED-B630LH2/C Hex. 5mm Type (Opt.)	1
	EPGZ84002-2FB-01	Clutch Assembly For ED-B630LH2/C Hex. 6.35mm Type (Opt.)	1
	EPGZ84002-2FB9.5-01	Clutch Assembly For ED-B630LH2/C Hex. 6.35-B9.5mm Type	1
30	EPMI30511-14	Pilot Rod	1
31	EPGK21181	"C" Ring	1

No.	Parts No.	Description	Q'ty
32	EPGI21191	Iron Washer	1
33	EPG21304	Washer (High Speed)	1
34	EPGH92239	Idle Gear	3
35	EPGG21515	Gear Seat	1
36	EPGA81101-1	Gear Case	1
37	EPGN21251	Main Bearing	2
38	EPGW21532	Iron Ring	1
39	EPGC90305A	Cam	1
40	EPGU30371	Stop Pilot	1
41	EPGP30361	Steel Balls $\phi 5$	3
42	EPGD91408-2	Shaft For Hex. 5mm Type (Opt.)	1
	EPGD91404-4	Shaft For Hex. 6.35mm Type	1
43	EPGP30351	Steel Balls $\phi 4$	2
44	EPGP21291A	Steel Balls $\phi 3$ For Hex. 5mm Type (Opt.)	2
	EPGP21291B	Steel Balls $\phi 2.5$ For Hex. 6.35mm Type	2
45	EPGF90324-1	Waring Plate	1
46	EPGE92389	Waring Spring For ED-B630LH2/C	1
47	EPGY21321	Waring Spring Base	1
48	EPGN30434	Bearing	1
49	EPG20206-1	Clutch Case	1
50	EPG21305-1	Spacer	1
51	EPGJ21351-3	Bit Sleeve	1
52	EPGO21341	Bit Spring	1
53	EPGQ21361	"C" Ring	1
54	EPGL21371	Torque Adjust Pin	4
55	EPGM21381	Torque Adjust Ring	1
56	EPGS21391	"C" Ring	1
57	EPPE02003-3N	Soft Cover	5
58	EPE31308-3	Inductance	1
59	EPCH20102-2	Wire Clamp	1
60	EPCH20102-3	Screw For Wire Clamp	2
61	EPED30004	Filter	1
62	EPG21438	Washer	1
63	EPMG30081-2	Pilot Rod	1

# ED-B630P2/C, ED-B650P2/C

BRUSHLESS FULL AUTO SHUT-OFF AC220, PUSH TO START, ELECTRIC SCREWDRIVER (DIRECT PLUG IN)



# ED-B630P2/C, ED-B650P2/C

## BRUSHLESS FULL AUTO SHUT-OFF AC220, PUSH TO START, ELECTRIC SCREWDRIVER (DIRECT PLUG IN)

### PARTS LIST

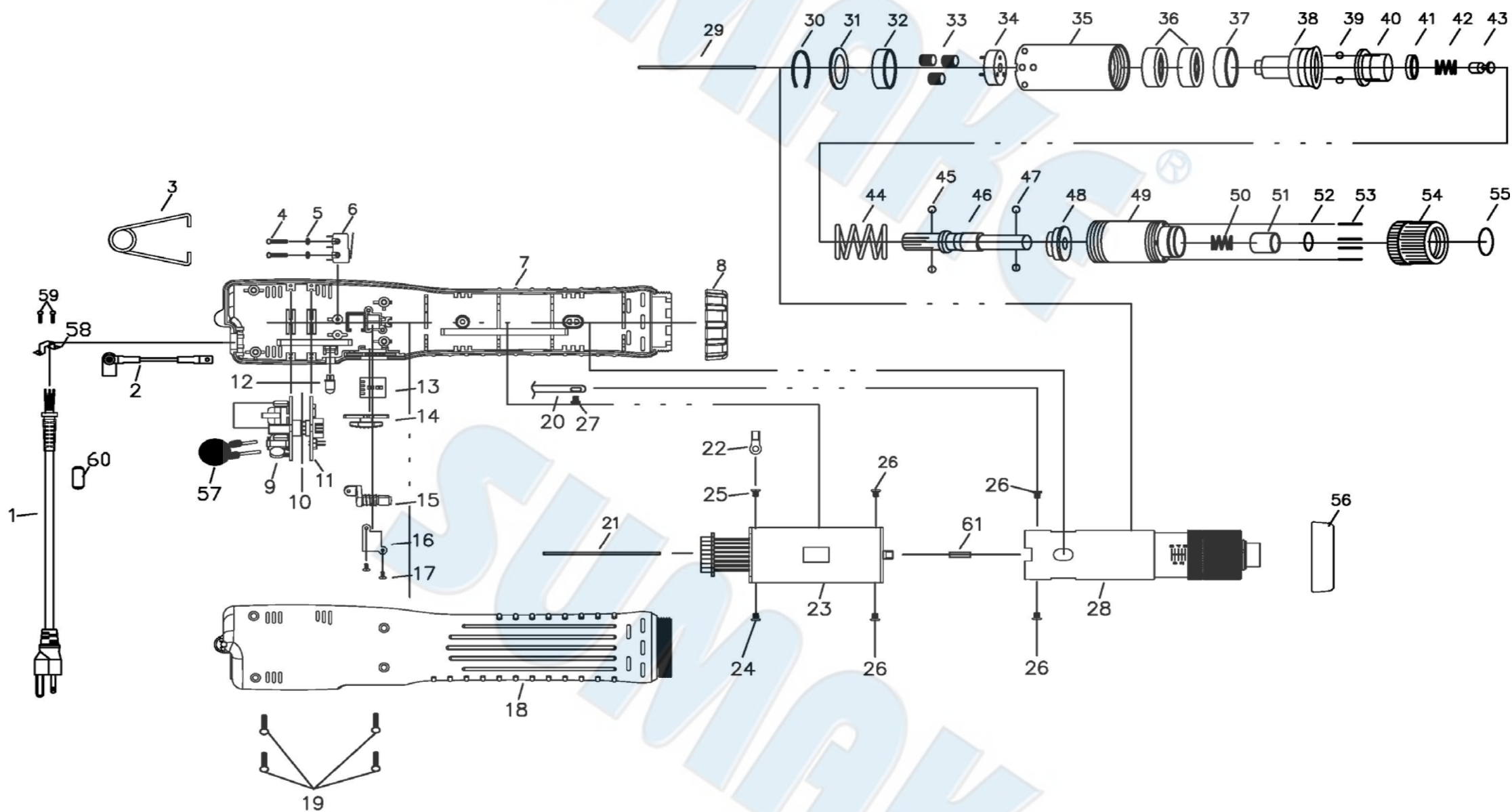
No.	Parts No.	Description	Q'ty
1	EPAM30004-E	Cord Assy-Europe Plug 10ft	1
	EPAM30004-U	Cord Assy-British Plug 10ft	1
2	EPP12104-8	3cm Retaining Clip	1
3	EPCJ20012	Suspension Hook	1
4	EPCH90151-1	Screw TP2x4mm	2
5	EPCH20102-8	Washer	2
6	EPH10201	Shut Off Switch	1
7	EPC40781F	Housing-Underside	1
8	EPD91033	Coupler	1
9	EPEG31136	P.C.B.	1
10	EPW50103-7	Insulating Washer	1
11	EPEG31137L	P.C.B.	1
12	EPE33105-1	Led Light	1
13	EPEG31421-17F	P.C.B.-Changeover	1
14	EPCI50212-14	F/R Switching Element For ED-B630P2/C	1
	EPCI50212-15	F/R Switching Element For ED-B650P2/C	1
15	EPCE50152-8	Push Rod	1
16	EPCE80001	Fixture	1
17	EPCH30200	Screw For Fixture	2
18	EPCA93122	Housing-Upside	1
19	EPCH20102	Screw For Housing	4
20	EPCH30681-5	Grounding Means	1
21	EPMI30511-16	Pilot Rod	1
22	EPE30180-2	Resistance Ntc	1
23	EPMO60005CE	Motor Assembly	1
24	EPCH20102-24	Screw For Motor	1
25	EPCH30201-4	Screw For Motor & Ntc	1
26	EPCH20102-31	Screw For Motor	4
27	EPM11326	Gear	1
28	EPCH20102-11	Screw	1
29	EPGZ84003-1A	Clutch Assembly For ED-B630P2/C Hex. 5mm Type (Opt.)	1
	EPGZ84003-1B	Clutch Assembly For ED-B630P2/C Hex. 6.35mm Type (Opt.)	1
	EPGZ84003-1B9.5	Clutch Assembly For ED-B630P2/C Hex. 6.35-B9.5mm Type	1
	EPGZ84003-3A	Clutch Assembly For ED-B650P2/C Hex. 5mm Type (Opt.)	1
	EPGZ84003-3B	Clutch Assembly For ED-B650P2/C Hex. 6.35mm Type (Opt.)	1
	EPGZ84003-3B9.5	Clutch Assembly For ED-B650P2/C Hex. 6.35-B9.5mm Type	1
30	EPMI30511-14	Pilot Rod	1

No.	Parts No.	Description	Q'ty
31	EPGK21181	"C" Ring	1
32	EPGI21191	Iron Washer	1
33	EPGH92238	Idle Gear	3
34	EPGG21514	Gear Seat	1
35	EPG20112	Central Gear	1
36	EPGH92238-1	Idle Gear	3
37	EPGG21514-1	Gear Seat	1
38	EPGA81101-1	Gear Case	1
39	EPGN21251	Main Bearing	2
40	EPGW21532	Iron Ring	1
41	EPGX90305-2	Cam	1
42	EPGP30361	Steel Balls $\phi$ 5	3
43	EPGF90322	Waring Plate	1
44	EPGV90331	Spring Cap	1
45	EPGO90341	Inner Spring	1
46	EPGU30370	Stop Pilot	1
47	EPGE92389-1	Waring Spring For ED-B630P2/C	1
	EPGE92388-4	Waring Spring For ED-B650P2/C	1
48	EPGP30351	Steel Balls $\phi$ 4	2
49	EPGD91402A	Shaft For Hex. 5mm Type (Opt.)	1
	EPGD91402B	Shaft For Hex. 6.35mm Type	1
50	EPGP21291A	Steel Balls $\phi$ 3 For Hex. 5mm Type (Opt.)	2
	EPGP21291B	Steel Balls $\phi$ 2.5 For Hex. 6.35mm Type	2
51	EPGY21321	Waring Spring Base	1
52	EPGB30443-1	Clutch Case	1
53	EPGO21341-1	Bit Spring	1
54	EPGJ21351	Bit Sleeve	1
55	EPGQ21361	"C" Ring	1
56	EPGL21371	Torque Adjust Pin	4
57	EPGM21381	Torque Adjust Ring	1
58	EPGS21391	"C" Ring	1
59	EPPE02003-3N	Soft Cover	5
60	EPE31308-3	Inductance	1
61	EPCH20102-2	Wire Clamp	1
62	EPCH20102-3	Screw For Wire Clamp	2
63	EPED30004	Filter	1
64	EPMG30081-2	Pilot Rod	1



# ED-B630PH2/C

BRUSHLESS FULL AUTO SHUT-OFF AC220, PUSH TO START, HIGH SPEED ELECTRIC SCREWDRIVER (DIRECT PLUG IN)



ED-B630PH2/C

BRUSHLESS FULL AUTO SHUT-OFF AC220, PUSH TO START, HIGH SPEED ELECTRIC SCREWDRIVER (DIRECT PLUG IN)

PARTS LIST

No.	Parts No.	Description	Q'ty	No.	Parts No.	Description	Q'ty
1	EPAM30004-E	Cord Assy-Europe Plug 10ft	1	31	EPGI21191	Iron Washer	1
	EPAM30004-U	Cord Assy-British Plug 10ft	1	32	EPG21304	Washer (High Speed)	1
2	EPP12104-8	3cm Retaining Clip	1	33	EPGH92239	Idle Gear	3
3	EPCJ20012	Suspension Hook	1	34	EPGG21515	Gear Seat	1
4	EPCH90151-1	Screw Tp2*4mm	2	35	EPGA81101-1	Gear Case	1
5	EPCH20102-8	Washer	2	36	EPGN21251	Main Bearing	2
6	EPH10201	Shut Off Switch	1	37	EPGW21532	Iron Ring	1
7	EPC40781F	Housing-Underside	1	38	EPGX90305-2	Cam	1
8	EPCD91033	Coupler	1	39	EPGP30361	Steel Balls Φ5	3
9	EPEG31136	P.C.B.	1	40	EPGF90322	Waring Plate	1
10	EPW50103-7	Insulating Washer	1	41	EPGV90331	Spring Cap	1
11	EPEG31137L	P.C.B.	1	42	EPGO90341	Inner Spring	1
12	EPE33105-1	Led Light	1	43	EPGU30370	Stop Pilot	1
13	EPEG31421-17F	P.C.B.-Changeover	1	44	EPGE92389-1	Waring Spring	1
14	EPCI50212-14	F/R Switching Element For ED-B630PH2/C	1	45	EPGP30351	Steel Balls Φ4	2
15	EPCE50152-8	Push Rod	1	46	EPGD91402A	Shaft For Hex. 5mm Type (Opt.)	1
16	EPCE80001	Fixture	1		EPGD91402B-2	Shaft For Hex. 6.35mm Type	1
17	EPCH30200	Screw For Fixture	2	47	EPGP21291A	Steel Balls Φ3 For Hex. 5mm Type (Opt.)	2
18	EPCA93122	Housing-Upside	1		EPGP21291B	Steel Balls Φ2.5 For Hex. 6.35mm Type	2
19	EPCH20102	Screw For Housing	4	48	EPGY21321	Waring Spring Base	1
20	EPCH30681-5	Grounding Means	1	49	EPGB30443-1	Clutch Case A'ssy	1
21	EPMI30511-16	Pilot Rod	1	50	EPGO21341-1	Bit Spring	1
22	EPE30180-2	Resistance Ntc	1	51	EPGJ21351	Bit Sleeve	1
23	EPMO60005-1CE	Motor Assembly	1	52	EPGQ21361	"C" Ring	1
24	EPCH20102-24	Screw For Motor	1	53	EPGL21371	Torque Adjust Pin	4
25	EPCH30201-4	Screw For Motor & Ntc	1	54	EPGM21381	Torque Adjust Ring	1
26	EPCH20102-31	Screw For Motor	4	55	EPGS21391	"C" Ring	1
27	EPCH20102-11	Screw	1	56	EPPE02003-3N	Soft Cover	5
28	EPGZ84003-2FA	Clutch Assembly For ED-B630PH2/C Hex. 5mm Type (Opt.)	1	57	EPE31308-3	Inductance	1
	EPGZ84003-2FB	Clutch Assembly For ED-B630PH2/C Hex. 6.35mm Type (Opt.)	1	58	EPCH20102-2	Wire Clamp	1
	EPGZ84003-2FB9.5	Clutch Assembly For ED-B630PH2/C Hex. 6.35-B9.5mm Type	1	59	EPCH20102-3	Screw For Wire Clamp	2
29	EPMI30511-14	Pilot Rod	1	60	EPED30004	Filter	1
30	EPGK21181	"C" Ring	1	61	EPMG30081-2	Pilot Rod	1

# EU Declaration of Conformity (DOC)

We: **SUMAKE INDUSTRIAL CO., LTD.**

**4F, No. 351, Yangguang St., Neihs District, Taipei City, Taiwan**

declare in sole responsibility that the equipment

Equipment : **ELECTRIC SCREWDRIVER**

Model/ Serial No. : **ED-B630L2/C, ED-B650L2/C, ED-B630LH2/C  
ED-B630P2/C, ED-B650P2/C, ED-B630PH2/C**

The object of the declaration described above is in conformity with the relevant union harmonization legislation:

- **CB**
- **Electromagnetic Compatibility 2014/30/EU**
- **RoHS 2015/863**

The following harmonised standards and technical specifications have been applied:

- **IEC 62841-1:2014**
- **EN IEC 55014-1:2021**
- **EN IEC 55014-2:2021**
- **EN IEC 61000-3-2:2019+A1:2021**
- **EN 61000-3-3:2013+A1:2019+A2:2021**

Name and Signature/Position



**Mike Su – Managing Director**

Date and Place

**2025/3/11**

**Taipei, Taiwan**

**ED-B6/C-D-2503F-K2**

# SUMAKE<sup>®</sup>

*Professional & Industrial*

## ELECTRIC SCREWDRIVER OPERATION AND MAINTENANCE MANUAL



MAKE JOBS BETTER THAN EVER



## INSTRUCTION

Congratulations on your purchase and welcome to **SUMAKE**.

## NOTICE

**SUMAKE** Screwdrivers are designed for installing threaded fasteners in light industrial and appliance manufacturing applications. **SUMAKE** is not responsible for customer modification of tools for applications on which **SUMAKE** was not consulted.

## WARNING

### Important safety information enclosed.

Read all these instructions before placing tool in service or operation this tool and save these instructions. It is the responsibility of the employer to place the information in this manual into the hands of the operator. Failure to observe the following warnings could result in injury. When using electric tools, Basic safety precautions should always be followed to reduce the risk of fire, electric shock and personal injury, including the following:

## 1. General Safety Rules

**WARNING!** Read all instructions. Failure to follow all instructions listed below may result in electric shock fire and/or serious injury. The term "Electric Screwdriver" in all of the warning listed below refer to your mains operated Electric Screwdriver.

SAVE THESE INSTRUCTIONS

### 1. Electrical Safety

- (a) **Keep work area clean and well lit.** Cluttered and dark areas invite accidents.
- (b) Electric Screwdriver plugs must match the outlet. Never modify the plug in any way. Do not use any adapter plugs with earthed (grounded) Electric Screwdrivers. Unmodified plugs and matching outlets will reduce risk of electric shock.
- (c) **Don't expose Electric Screwdrivers to rain or wet conditions.** Water entering a Electric Screwdriver will increase the risk of electric shock.
- (d) Do not abuse the cord. Never use the cord to carrying, pulling or unplugging the Electric Screwdriver. Keep cord away from heat, oil, sharp edges or moving parts. Damaged or entangled cords increase the risk of electric shock.

### 2. Personal Safety

- (a) **Stay alert, watch what you are doing and use common sense when operating a Electric Screwdriver. Do not use Electric Screwdriver while you are tired or under the influence of drugs, alcohol, or medication.** A moment of inattention while operating Electric Screwdrivers may result in serious personal injury.
- (b) **Avoid accidental starting. Ensure the switch is in the off position before plugging in.** Carrying Electric Screwdrivers with your finger on the switch or plugging in Electric Screwdrivers that have the switch on invites accidents.
- (c) **Do not overreach. Keep proper footing and balance at all times.** This enables better control of the Electric Tools in unexpected situations.

### 3. Electric Screwdriver Use and Care

- (a) **Do not force the Electric Screwdriver. Use the correct Electric Screwdriver for your application.** The correct Electric Screwdriver will do the job better and safer at the rate for which it was designed.
- (b) **Do not use Electric Screwdriver if switch does not turn it on or off.** Any Electric Screwdriver that cannot be controlled with the switch is dangerous and must be repaired.
- (c) **Disconnect the plug from the power source before making any adjustments, changing accessories, or storing the Electric Screwdrivers.** Such preventive safety measures reduce the risk of starting the Electric Screwdriver accidentally.
- (d) **Store idle Electric Screwdrivers out of reach of children and do not allow persons unfamiliar with the Electric Screwdriver or these instructions to operate the Electric Screwdriver.** Electric Screwdrivers are dangerous in the hands of untrained users.

### 4. Service

- (a) **Have your Electric Screwdriver serviced by qualified repair person using only identical replacement parts,** This will ensure that the safety of the Electric Screwdriver is maintained.

## 2. Operations Cautions

1. Whenever changing a bit, make certain the Forward / Reverse Switch is in the " OFF " position and tool is unplugged.
2. Do not allow chemicals such as acetone, benzene, thinner, trichloroethylene ketone, or other similar chemicals to come in contact with the screwdriver housing as damage will result.
3. Do not drop or abuse the screwdriver.
4. Do not adjust the torque setting higher than 8 on the torque scale.
5. Operation frequency: The original setting of the frequency is 1 sec on / 3 sec off. The number of screw fastened is about 15 pcs. Over frequently using makes the motor overheated and damage to screwdriver.  
Enough heat-dissipation is good for screwdriver.  
Slow speed Duty Cycle Conversion (for reference)  
Based on 1000 rpm, 1 second ON/3 seconds OFF. For example, the duty cycle for 350rpm,  
 $1000-350=650$ ,  $650/1000\%=65\%$   
 $ON=1 \times 1.65=1.65$ ,  $OFF=3 \times 1.65=4.95$  (rounded value) =2 seconds ON / 5 seconds OFF  
This tool is intended for a duty cycle of 2.0 sec on, 5.0 sec off.

Slow speed (rpm)	operation frequency	Slow speed (rpm)	operation frequency	Slow speed (rpm)	operation frequency
900	1.0 ON 3.0 OFF	600	1.0 ON 3.0 OFF	300	2.0 ON 5.0 OFF
850	1.0 ON 3.0 OFF	550	2.0 ON 5.0 OFF	250	2.0 ON 5.0 OFF
800	1.0 ON 3.0 OFF	500	2.0 ON 5.0 OFF	200	2.0 ON 5.0 OFF
750	1.0 ON 3.0 OFF	450	2.0 ON 5.0 OFF	150	2.0 ON 5.0 OFF
700	1.0 ON 3.0 OFF	400	2.0 ON 5.0 OFF	100	2.0 ON 5.0 OFF
650	1.0 ON 3.0 OFF	350	2.0 ON 5.0 OFF		

6. Do not use this screwdriver for tightening wood screws. This is " Metal Assembly Screw Driver "
7. Do not operate the Forward / Reverse Switch the motor is running.
8. Whenever a tool is not being used, move the Forward / Reverse Switch to the "OFF" position and unplug the screwdriver.
9. Please grasp the plug of power cord while plugging in or out the plugs of connecting cord of Electric Screwdriver and power cord.
10. Please fix the Power Supply to avoid any danger of pulling and dragging the power cord.
11. In case of the Power Supply is overheated or overloaded with maximum current rating of fuse, the high-speed fuse will be melt down and cut off the power. If the Power Supply continues to jump off or has an abnormal switching reaction, please stop the operation immediately and send back the Power Supply for repair.
12. When Electric Screwdriver is running, if slides Forward/Reverse Switch instantly, device will generate the protection program to force Electric Screwdriver stop.

### CAUTION

1. Do not drop or abuse the tool.
2. Whenever a tool is not being used, position the Power Switch to the "OFF" position and unplug the power cord.

## 3. Description of Operation

Attaching / detaching bit and bit type

Push up the holder clamp by finger tip, and it will be unlocked. Thus, the bit can be freely attached and detached (single finger notion type).

1. Insert the power plug into a receptacle and set the change cover switch to "F" position.
2. Apply the bit to the screw head and press the lever or push main body to, then the switch will be turned ON to start the motor running.
3. When the screw is tightened and reach the torque that you had set, The tool will stopped automatically.
4. To reset the tool by releasing the lever to the original position or releasing the bit from the screw head.
5. To return the screw, set the changeover switch to "R" position.



**WARNING ! DO NOT OPERATE THIS TOOL WITHOUT PROTECTIVE EARTH CONNECTED**

## 4. Grounding Instructions

The tool should be grounded while in use to protect the operator from electric shock. The tool is equipped with a three-conductor cord and three-prong grounding-type plug to fit the proper grounding-type receptacle. The green (or green and yellow) conductor in the cord is the grounding wire. Never connect the green (or green and yellow) wire to a live terminal.

Green and yellow ----- Earth,    Blue ----- Neutral,    Brown ----- Live



## 5. Installation Instructions

1. Use the Power Supply voltage recommended in the specification of this manual.
2. When using a commercial Power Supply be sure to set up circuit and safety breakers. You must also properly ground the mechanisms.
3. The temperature and humidity should be kept at appropriate levels.
4. Do not set up the Power Supply in a room that has poor ventilation and where it may be exposed to dust and metallic flakes.
5. Do not put heavy object on top of Power Supply or pile thing on it.
6. Attach the Power Supply securely to a flat, stable surface. If the Power Supply is put a high place, take special care to ascertain that there is no danger of it falling.
7. Keep bystanders away. Do not permit unauthorized personnel to operate this Power Supply.
8. Do not set up the Power Supply near high voltage machinery or in an excessively noisy environment.
9. Avoid setting up or storing the Power Supply in wet or oily environments or where it might be exposed to corrosive or flammable gases.
10. We emphasize that the Power Supply should be placed in stable, fixed location.

## 6. Servicing

### Maintenance and Inspection:

1. The screwdriver must be operated in top condition, one day working hour must be not more than eight hours.
2. Periodically check for wear of motor carbon brush, one day for eight hours use is normal, replace it after every five to six months.
3. Please note don't let the motor and Power Supply get over heated, every minute use 10~15 screws to operate.
4. The frequency use of this electric screw driver is over than eight hours a day, still it needs periodically testing and treatment. Every 5-6 months.
5. Inspect tool cords periodically and if damaged, have them repaired by an authorized service facility. Inspect extension cords periodically and replace if damaged.
6. Do not remove any labels. Replace any damaged label.

### CAUTION

1. The use of other than genuine **SUMAKE** replacement parts may result in decreased tool performance and increased maintenance, and may invalidate all warranties.
2. All repairs and maintenance of this tool and its word must be performed by an authorized service center.
3. **SUMAKE** is not responsible for customer modification of tools for applications on which **SUMAKE** was not consulted.
4. Repairs should be made only by authorized, trained personnel. Consult your nearest **SUMAKE** authorized service center.
5. It is the responsibility of the employer to place the information in this manual into the hands of the operator.

### IMPORTANT

1. Within warranty period, any quality issue please contact with **SUMAKE** distributors and do not take apart screwdrivers without authorization, otherwise warranty will NOT be covered.
2. Any repair and maintenance task has to follow **SUMAKE** directly training education.

SAVE THESE INSTRUCTIONS DO NOT DESTROY



ELECTRIC SCREWDRIVER



CORDLESS SCREWDRIVER

[www.SUMAKE.com](http://www.SUMAKE.com)