

SUMAKE[®]

Professional & Industrial

INSTRUCTION MANUAL

ITEM NO.: **ES-B12 series**
**10.8V BRUSHLESS FULL AUTO
SHUT-OFF CORDLESS SCREWDRIVER**



ES-B12 series-I-2508E-MI

Specification												
Model	Torque range (N.m)	Free Speed (rpm)			Length	Diameter	Standard Deviation	Volt.	Weight(kg)		Fastening Capacity	
	Soft joint	ECO	NORMAL	SPORT	mm	mm	%		w/o battery	w/2.0Ah battery	Machine Screw	Tapping Screw
ES-B1205	1.0~5.0	750	1130	1500	190	223	±2	10.8V	1.0	1.3	M3.6-M6.0	M2.8-M4.9
ES-B1207	1.5~6.5	660	920	1200	190	223	±2				M4.1-M6.4	M3.1-M5.4
ES-B1209	1.5~9.0	550	800	1000	190	223	±2				M4.1-M7.3	M3.1-M6.0
ES-B1212	2.0~12.0	150	230	300	190	223	±2				M4.1-M8.0	M3.1-M6.4
ES-B1212H	2.0~12.0	400	600	800	190	223	±2				M4.5-M8.0	M3.5-M6.4
ES-B1215H	2.0~15.0	400	500	600	190	223	±2				M4.5-M8.6	M3.5-M6.8

*Weight、Length、Diameter Parameter Value w/2.0Ah battery.

* Precision and reliability: Machine capability index > 2.2±10% according to ISO 5393

* Customization, exclusive specifications can be made according to customer needs, please contact us for details

*ECO : For hard joint screwing with low speed. More energy saving and number of screwing.

*NORMAL : For normal screwing, and there is no other locking requirement for the power saving standard value, so use this mode.

*SPORT(High speed) : For soft joint screwing with high speed. High efficiency and low power consumption.

Standard packing and accessories						
Contents (w/o battery)	Standard battery pack (2.0Ah or 2.5Ah)	Charger (with power cable)	Accessories			
CORDLESS Tool	BP1220L01 BP1225L01	BC10T01	Torque wrench	Color ring	Bit(2#4.5*50)	Bit(2#6*50)

Option									
Enhanced battery pack (4.0Ah)	Charger (w/o power cable)	Plug				USB KIT	Bits (HRC 67)	Hook	Belt Hook
BP1240L01	BC10T01	CH002-02 (USA-110V)	CH002-03 (India-Big)	CH002-04 (Europe)	CH002-05 (UK)	E-6C1011	DH Series	E-HK001	7Q5103
		CH002-06 (Australia)	CH002-07 (India-Small)	CH002-08 (USA-220V)					

Before you use the Cordless Screwdriver for the first time, it is essential to read and understand the manual completely (including the spare parts view). The term “Cordless Screwdriver” in all of the warning listed below refers to your main operated appliance



1. Read instruction manual.

2. Observe caution and safety notes.

3. Recyclable.

4. For indoor use only.

5. Do not expose to wet or rain conditions.

6. Do not operate in an explosive atmosphere.

7. Do not disassemble.

8. Forbid to throw away.

Index

General Safety Rules.....	4
Accessories.....	6
Battery charging system.....	7
Operating instructions.....	8
Operating instructions.....	9
Operating instructions.....	10
Operating instructions.....	11

- **General Safety Rules**

Carefully read this manual before using this cordless screwdriver. Make sure that you know how the cordless screwdriver functions and how to operate it. Maintain the cordless screwdriver in accordance with the instructions to ensure that it functions properly. Keep this manual with the cordless screwdriver. If the cordless screwdriver is to be used by a third party, this instruction manual must be supplied with it. The safety instructions do not by themselves eliminate any danger completely and proper accident prevention measures must always be used.

1) Work area

- a) Keep work area clean and well lit. Cluttered and dark areas invite accidents.
- b) Do not operate cordless screwdrivers in explosive atmospheres, such as in the presence of flammable liquids, gases or dust. Cordless screwdrivers create sparks which may ignite the dust or fumes.
- c) Keep children and bystanders away while operating a cordless screwdriver. Distractions can cause you to lose control.

2) Electrical safety

- a) Your screwdriver is double insulated for your safety. This means that all the external metal parts are electrically insulated from the mains power supply. This is done by placing insulation barriers between the electrical and mechanical components marking it unnecessary for the tool to be earthed. Do not attempt to repair this machine yourself unless you are a suitably qualified person.
- b) Cordless screwdriver plugs must match the outlet. Never modify the plug in any way. Do not use any adapter plugs with earthed (grounded) cordless screwdrivers. Unmodified plugs and matching outlets will reduce risk of electric shock.
- c) Avoid body contact with earthed or grounded surfaces such as pipes, radiators, ranges and refrigerators. There is an increased risk of electric shock if your body is earthed or grounded.
- d) Do not expose cordless screwdrivers to rain or wet conditions. Water entering a cordless screwdriver will increase the risk of electric shock.

3) Personal safety

- a) Stay alert, watch what you are doing and use common sense when operating a cordless screwdriver. Do not use a cordless screwdriver while you are tired or under the influence of drugs, alcohol or medication. A moment of inattention while operating cordless screwdrivers may result in serious personal injury.
- b) Use safety equipment. Always wear eye protection. Safety equipment such as dust mask, non-skid safety shoes, hard hat, or hearing protection used for appropriate conditions will reduce personal injuries.
- c) Do not overreach. Keep proper footing and balance at all times. This enables better control of the cordless screwdriver in unexpected situations.
- d) Dress properly. Do not wear loose clothing or jewellery. Keep your hair, clothing and gloves away from moving parts. Loose clothes, jewellery or long hair can be caught in moving parts.

4) Cordless screwdriver operation and maintenance

- a) Do not force the cordless screwdriver. Use the correct cordless screwdriver for your

application. The correct cordless screwdriver will do the job better and safer at the rate for which it was designed.

- b) Do not use the cordless screwdriver if the switch does not turn it on and off. Any cordless screwdriver that cannot be controlled with the switch is dangerous and must be repaired.
- c) Store idle cordless screwdrivers out of the reach of children and do not allow persons unfamiliar with the cordless screwdriver or these instructions to operate the cordless screwdriver. Cordless screwdrivers are dangerous in the hands of untrained users.
- d) Do not try to repair the tool.

5) Battery use and care

- a) Use cordless screwdrivers only with specifically designated battery packs. Use of any other battery packs may create a risk of injury and fire.
- b) When battery pack is not in use, keep it away from other metal objects like paper clips, coins, keys, nails, screws, or other small metal objects that can make a connection from one terminal to another. Shorting the battery terminals together may cause burns or a fire.
- c) Under abusive conditions, liquid may be ejected from the battery; avoid contact. If contact accidentally occurs, flush with water. If liquid contacts eyes, additionally seek medical help. Liquid ejected from the battery may cause irritation or burns.

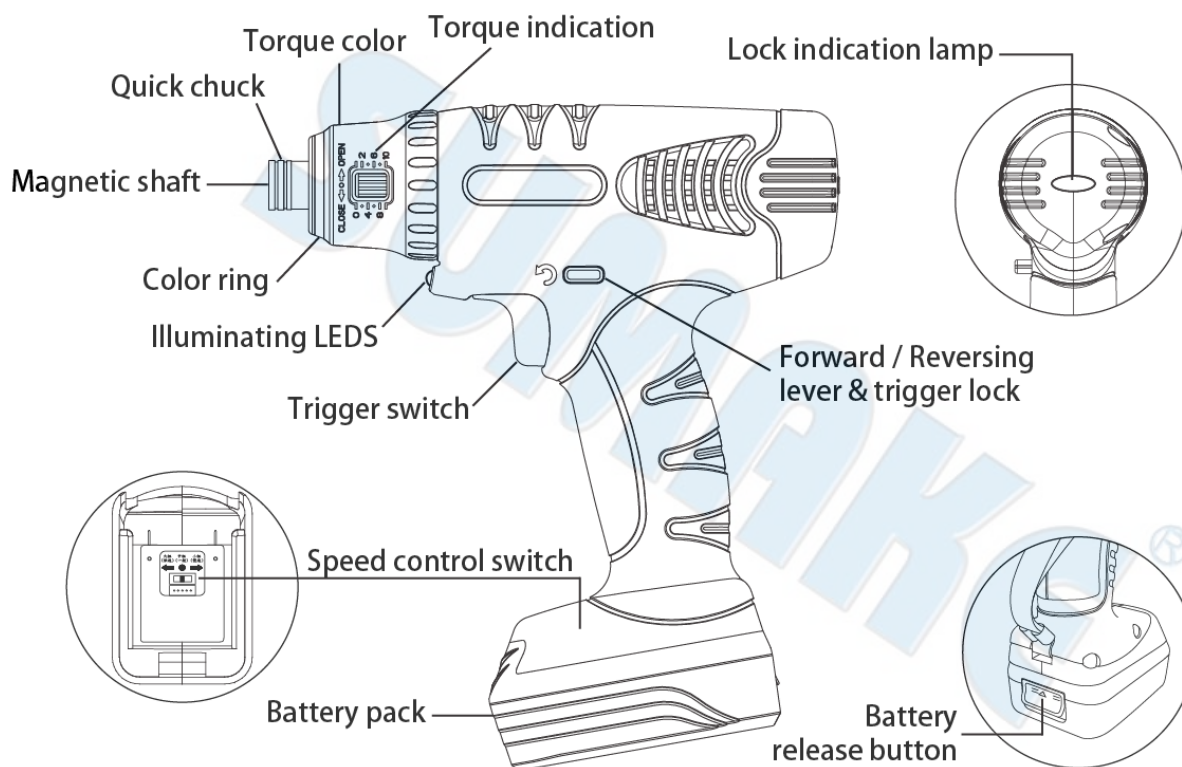


d) **Only for EU countries.** Do not dispose of electrical appliances as unsorted municipal waste, use separate collection facilities. Contact your local government for information regarding the collection systems available. If electrical appliances are disposed of in landfills or dumps, hazardous substances can leak into the groundwater and get into the food chain, damaging your health and well-being. When replacing old appliances with new ones, the retailer is legally obligated to take back your old battery for disposal at least for free of charge.

6) Service

- a) Have your cordless screwdriver serviced by a qualified repair person using only identical replacement parts. This will ensure that the safety of the cordless screwdriver is maintained.

- **Accessories and technical Specifications**



• **Battery charging system**

For the transportation safety, all new batteries are shipped discharged and must be charged prior to first use. Batteries will take 8 hours to recharge at first use.

Battery Warranty and Maintenance:

★The warranty period for the battery is one year. When the battery is completely undischarged, it needs to be changed every three months.

★When the tool is not in use, please remove the battery to prevent the battery from continuing to discharge in standby mode, causing the battery to be depleted and unable to be recharged to its original capacity.

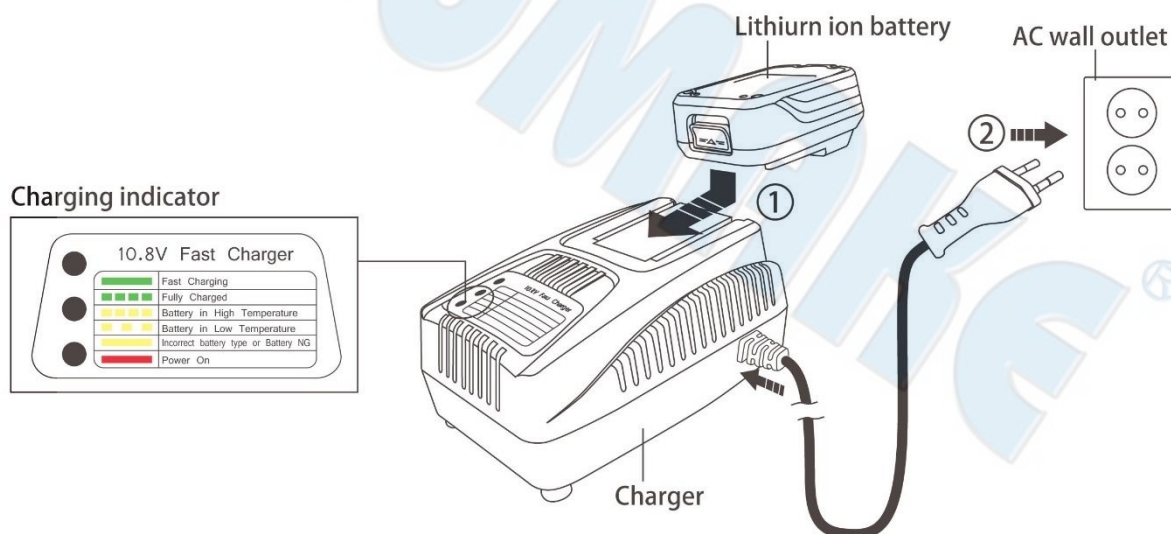
★Some human factors are not included in the warranty scope :

- ①The battery is damaged or cannot be charged due to non-regular charging or long-term not use the battery, which is a human factor.
- ②After the battery is discharged, the battery is not recharged immediately and the battery is low voltage or the light (on the tool not battery) turns on the red. so the voltage becomes too low to recharge the original power lever.

Charging Instructions:

★ The charging time is 60 minutes for standard 2Ah battery, and 100 minutes for enhanced 4Ah battery.

- ① Slide battery into charger.
- ② Plug AC cable into your standard power outlet.

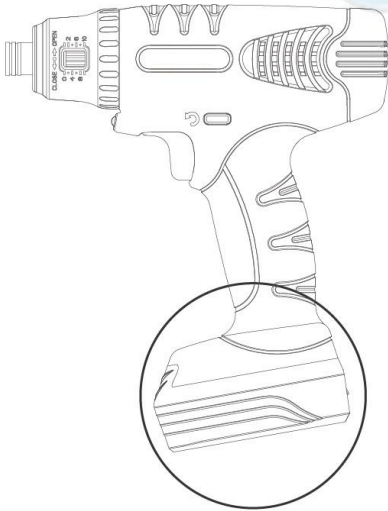


• **Operating instructions**

A. Operation Frequency

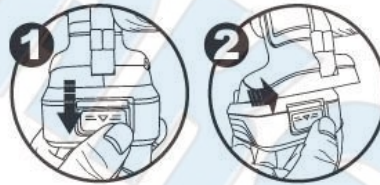
According to the on-site usage environment and locking conditions, it is recommended to operate intermittently for 1 minute to lock 10 screws. Do not exceed the recommended operating frequency. Otherwise, the motor may overheat and cause serious damage to internal parts. Cordless power tools must be properly treated rest cooling.

B. Releasing and inserting battery pack



(1) Battery pack release

Release battery pack by pressing the battery release button and sliding the pack out of the handle base.



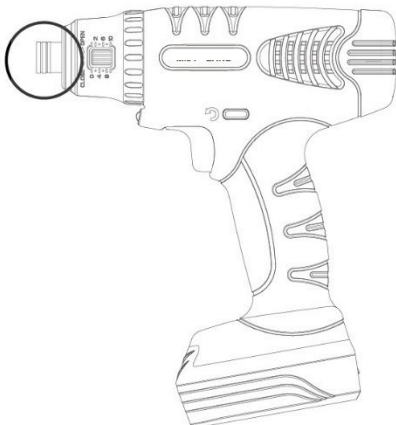
(2) Battery pack insert

To insert the battery pack, align the battery with the grooves and slide the pack in until it locks into position. Do not force.



C. Replace the bit

Move Forward/Reversing lever to the center OFF position.



(1) Gently pull up the magnetically slide sleeve

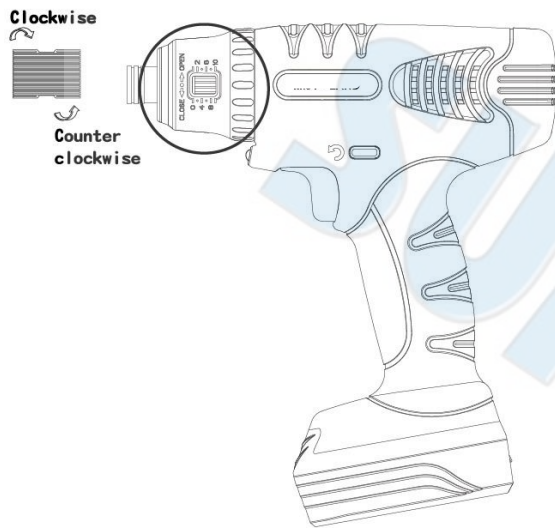
(2) Hold the magnetically slide sleeve and take out the bit

(3) When installing the bit, first pull up the magnetically slide sleeve then insert the bit and open the sleeve to make the screwdriver head rotate without deflection

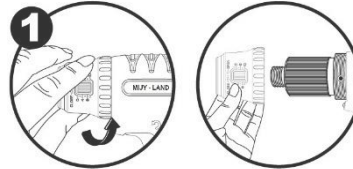


• **Operating instructions**

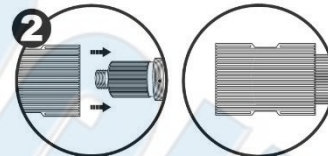
D. Use the torque wrench to adjust torque



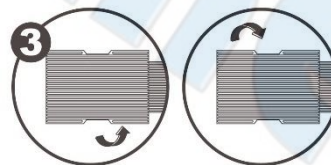
(1) Remove the torque cover by turning it counterclockwise.



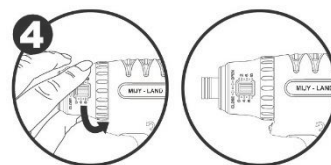
(2) Take the torque wrench then push into the tool.



(3) Rotate the wrench to adjust the torque.



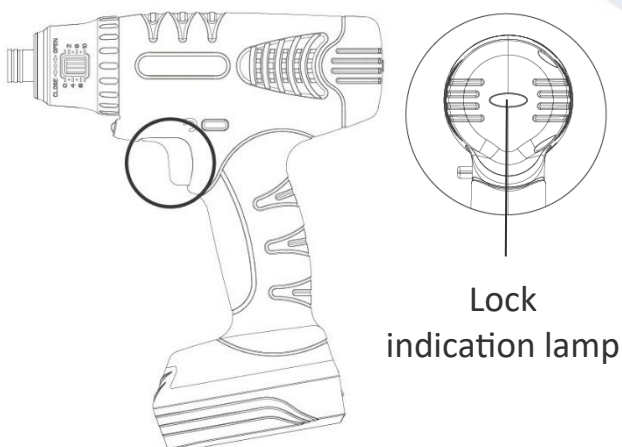
(4) Return the torque cover to the original position.



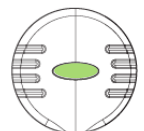
E. Confirm the power

Press the trigger once.

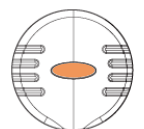
The power indication lamp will show the current power status : Green(normal) 、 Orange(less) 、 Red(lack of power). Please charge or replace the battery if red lamp lit.



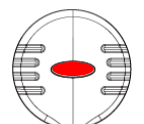
(1) Green light: The battery is fully charged and can be used normally.



(2) Orange light: the battery can be used.



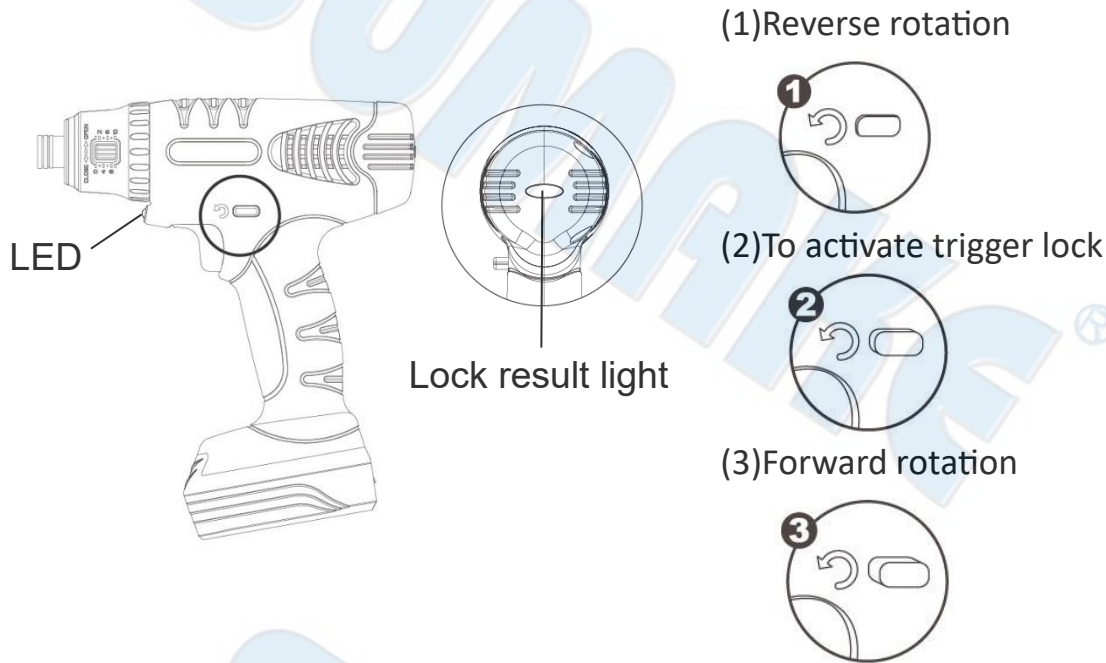
(3) Red light: the battery is low and needs to be charged or replaced



- **Operating instructions**

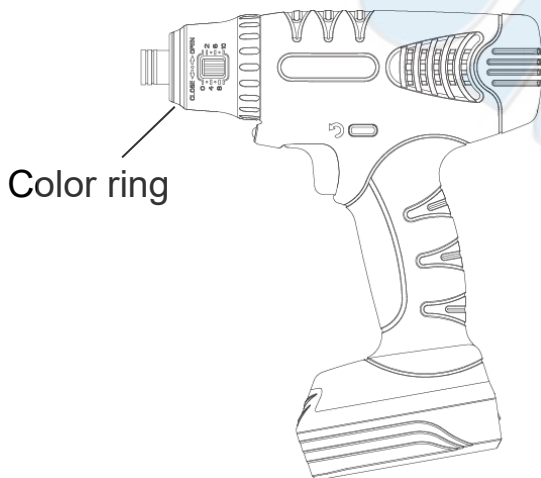
F. Forward/Revering Lever & Trigger Lock

The lever is designed for changing rotation of a bit, and for locking the trigger in an OFF position. Press the trigger once the LED will light, hold the trigger can lock the screw. The rotation will automatically stop if torque reached, and the lock indication lamp is green. Red light means the lock failed.



G. Torque fix system(Optional)

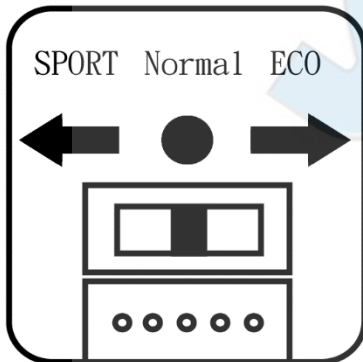
To avoid the adjustment by operator and easy to mark the torque through the window. This up-to-the-date design let you either adjust the torque rapidly or without using the torque lock nut.



• **Operating instructions**

H. Power saving switch

According to the object, you can change the speed for energy saving and more efficiency. This feature is available for forward rotation.



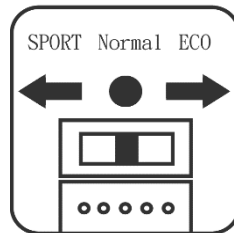
(1) Eco(low speed)mode :

For hard joint screwing with low speed
More energy saving and number of screwing.



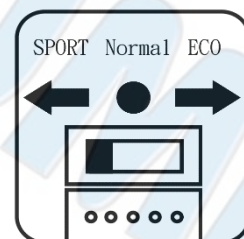
(2) Normal mode :

For normal screwing.



(3) Sport(High speed)mode :

For soft joint screwing with high speed.
Please switch to Normal or Eco mode if continuous clutch pulse occurred.



I. Sleeping Mode



When tool goes into sleep mode, it shuts down the drive after five minutes.

Once awakened, the tool returns to its former operating status.

Our company reserves the right to modify the product without prior notice.

NOTE

SUMAKE®

SUMAKE®