

INSTRUCTION MANUAL

ITEM NO.: **ES-B1005M, ES-B1009M, ES-B1012M**
10.8V BRUSHLESS FULL AUTO SHUT-OFF
CORDLESS SCREWDRIVER
- LOW COUNTERFORCE



General Safety Rules

Read all safety warnings and all instructions. Failure to follow the warnings and instructions may result in electric shock, fire and/or serious injury. Save all warnings and instructions for future reference.

1. Work area
 - (1) Keep work area clean and well lit. Cluttered and dark areas invite accidents.
 - (2) Do not operate power tools in explosive atmospheres, such as in the presence of flammable liquids, gases or dust. Power tools create sparks which may ignite the dust or fumes.
 - (3) Keep children and bystanders away while operating a power tool. Distractions can cause you to lose control.
2. Electrical safety
 - (1) Power tool plugs must match the outlet. Never modify the plug in any way. Do not use any adapter plugs with earthed (grounded) power tools. Unmodified plugs and matching outlets will reduce risk of electric shock.
 - (2) Avoid body contact with earthed or grounded surfaces such as pipes, radiators, ranges and refrigerators. There is an increased risk of electric shock if your body is earthed or grounded.
 - (3) Do not expose power tools to rain or wet conditions. Water entering a power tool will increase the risk of electric shock.
 - (4) Do not abuse the cord. Never use the cord for carrying, pulling or unplugging the power tool. Keep cord away from heat, oil, sharp edges or moving parts. Damaged or entangled cords increase the risk of electric shock.
 - (5) When operating a power tool outdoors, use an extension cord suitable for outdoor use. Use of a cord suitable for outdoor use reduces the risk of electric shock.
3. Personal safety
 - (1) Stay alert, watch what you are doing and use common sense when operating a power tool. Do not use a power tool while you are tired or under the influence of drugs, alcohol or medication. A moment of inattention while operating power tools may result in serious personal injury.
 - (2) Use safety equipment. Always wear eye protection. Safety equipment such as dust mask, non-skid safety shoes, hard hat, or hearing protection used for appropriate conditions will reduce personal injuries.
 - (3) Avoid accidental starting. Ensure the switch is in the off position before plugging in. Carrying power tools with your finger on the switch or plugging in power tools that have the switch on invites accidents.
 - (4) Remove any adjusting key or wrench before turning the power tool on. A wrench or a key left attached to a rotating part of the power tool may result in personal injury.
 - (5) Do not overreach. Keep proper footing and balance at all times. This enables better control of the power tool in unexpected situations.
 - (6) Dress properly. Do not wear loose clothing or jewellery. Keep your hair, clothing and gloves away from moving parts. Loose clothes, jewellery or long hair can be caught in moving parts.
 - (7) If devices are provided for the connection of dust extraction and collection facilities, ensure these are connected and properly used. Use of these devices can reduce dust related hazards.
4. Power tool use and care
 - (1) Do not force the power tool. Use the correct power tool for your application. The correct power tool will do the

job better and safer at the rate for which it was designed.

- (2) Do not use the power tool if the switch does not turn it on and off. Any power tool that cannot be controlled with the switch is dangerous and must be repaired.
- (3) Disconnect the plug from the power source before making any adjustments, changing accessories, or storing power tools. Such preventive safety measures reduce the risk of starting the power tool accidentally.
- (4) Store idle power tools out of the reach of children and do not allow persons unfamiliar with the power tool or these instructions to operate the power tool. Power tools are dangerous in the hands of untrained users.
- (5) Maintain power tools. Check for misalignment or binding of moving parts, breakage of parts and any other condition that may affect the power tools operation. If damaged, have the power tool repaired before use. Many accidents are caused by poorly maintained power tools.
- (6) Keep cutting tools sharp and clean. Properly maintained cutting tools with sharp cutting edges are less likely to bind and are easier to control.
- (7) Use the power tool, accessories and tool bits etc., in accordance with these instructions and in the manner intended for the particular type of power tool, taking into account the working conditions and the work to be performed. Use of the power tool for operations different from intended could result in a hazardous situation.

5. Battery tool use and care

- (1) Ensure the switch is in the off position before inserting battery pack. Inserting the battery pack into power tools that have the switch on invites accidents.
- (2) Recharge only with the charger specified by the manufacturer. A charger that is suitable for one type of battery pack may create a risk of fire when used with another battery pack.
- (3) Use power tools only with specifically designated battery packs. Use of any other battery packs may create a risk of injury and fire.
- (4) When battery pack is not in use, keep it away from other metal objects like paper clips, coins, keys, nails, screws, or other small metal objects that can make a connection from one terminal to another. Shorting the battery terminals together may cause burns or a fire.
- (5) Under abusive conditions, liquid may be ejected from the battery; avoid contact. If contact accidentally occurs, flush with water. If liquid contacts eyes, additionally seek medical help. Liquid ejected from the battery may cause irritation or burns.
- (6) Only for EU countries. Do not dispose of electrical appliances as unsorted municipal waste, use separate collection facilities. Contact your local government for information regarding the collection systems available. If electrical appliances are disposed of in landfills or dumps, hazardous substances can leak into the groundwater and get into the food chain, damaging your health and well-being. When replacing old appliances with new ones, the retailer is legally obligated to take back your old appliance for disposal at least for free of charge.



6. Service

- (1) Have your power tool serviced by a qualified repair person using only identical replacement parts. This will ensure that the safety of the power tool is maintained.

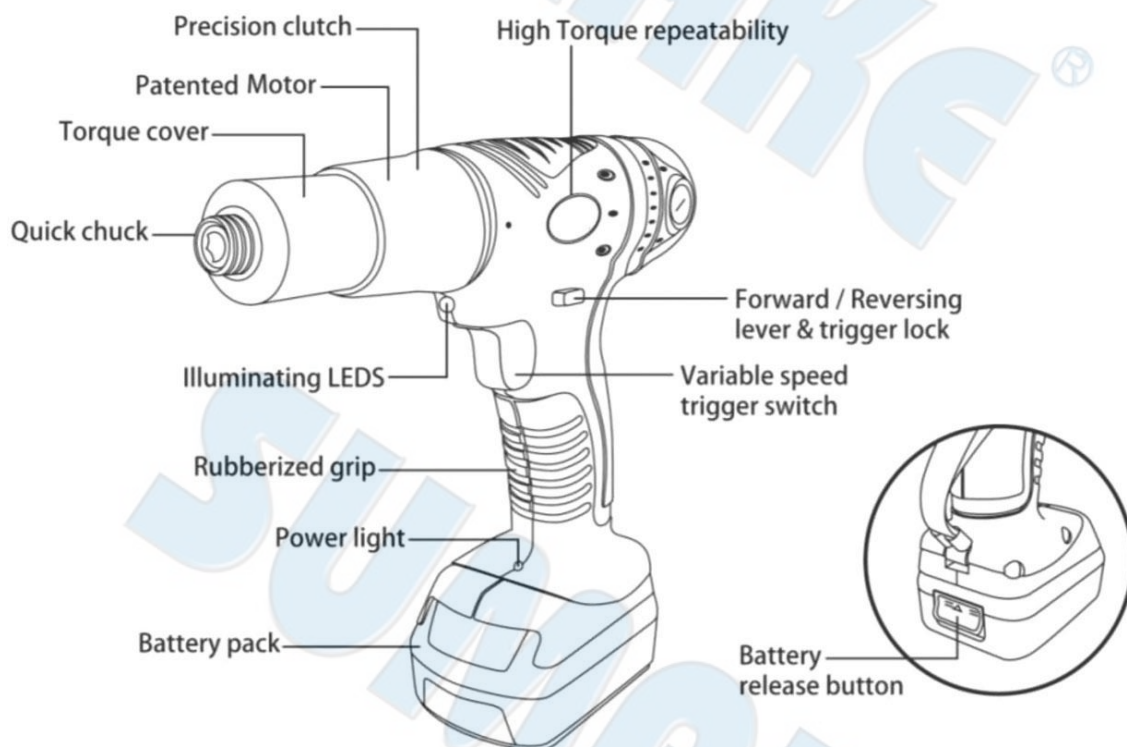
Original Instructions

To ensure the best results from your cordless screwdriver please read these safety and usage instructions carefully. If you have any questions or queries after reading this manual please do not hesitate to contact us.

For easy of use, this manual is divided into sections. Each section of the manual is written with you, the tool operator, in mind. We have left out all of the technical terms so that you can readily understand how to get the maximum performance from your SUMAKE Cordless screwdriver, and how to avoid damaging the tool or injuring yourself. But, to accomplish this, we need you to do two things:

1. READ THE MANUAL FROM COVER TO COVER BEFORE USING THE TOOL.
2. FOLLOW ALL INSTRUCTIONS IN THE MANUAL.

Technical Specification



Model No.	Voltage	Chuck (inch)	Idle Speed	Torque Range			Weight (w/ Battery)		Battery Pack
	(V)	(inch)	(r.p.m.)	ft-lbs	Nm	Kgf/cm	lbs	kg	
ES-B1005M-20	10.8	6.35	1500	0.74 – 3.69	1.0 - 5.0	10 - 50	2.87	1.3	2.0Ah Li-ion
ES-B1005M-40		1/4 Hex					3.24	1.47	4.0Ah Li-ion
ES-B1009M-20	10.8	6.35	900	11.1 - 6.64	1.5 - 9.0	15 - 90	2.87	1.3	2.0Ah Li-ion
ES-B1009M-40		1/4 Hex					3.24	1.47	4.0Ah Li-ion
ES-B1012M-20	10.8	6.35	750	1.48 - 8.85	2.0 - 12.0	20 - 120	2.87	1.3	2.0Ah Li-ion
ES-B1012M-40		1/4 Hex					3.24	1.47	4.0Ah Li-ion

Safety instructions

Carefully read this manual before using this cordless screwdriver. Make sure that you know how the power tool functions and how to operate it. Maintain the power tool in accordance with the instructions to ensure that it functions properly.

Keep this manual with the power tool. If the power tool is to be used by a third party, this instruction manual must be supplied with it. The safety instructions do not by themselves eliminate any danger completely and proper accident prevention measures must always be used.

1. Consider work area environment

Do not expose power tools or chargers to rain. Do not use power tools in damp or wet locations. Keep work area well lit. Do not use power tools in the presence of flammable liquids or gases. Do not use near flammable or hazardous materials.

2. Keep children away

Do not let visitors touch the tool or extension cord. All visitors should be kept away from work area. Keep out of reach of children. This power tool is not intended for use by young children or infirm persons. Young children must be supervised to ensure that they do not play with the power tool.

3. Use the right tool

Do not force small tools or attachments to do the job of a heavy duty tool. Do not force the tool. Do not put undue strain or force on this power tool. Do not operate for extended periods continuously, allow tool to cool. Operate only as intended.

4. Use safety glasses and Ear protection

To avoid the risk of hearing loss always use a suitable hearing protection device. Use a face or dust mask if the cutting operation is dusty or if using in enclosed spaces. Always wear EYE and EAR safety gear when working with or in the vicinity of the tool.

5. Dress properly

Do not wear loose clothing or jewellery as they can be caught in moving parts. Rubber gloves and non skid footwear are recommended when working outdoors. Wear protective hair covering to contain long hair.

Electrical Safety

When using electric power tools always observe safety regulations where applicable to reduce the risk of fire, electric shock and personal injury. Always check that the power supply corresponds to the voltage on the rating plate. Be sure the supply is the same as the voltage given on the rating plate of your charger. Your charger is fitted with a two core and plug.

1. Double insulation

Your screwdriver is double insulated for your safety. This means that all the external metal parts are electrically insulated from the mains power supply. This is done by placing insulation barriers between the electrical and mechanical components marking it unnecessary for the tool to be earthed. Do not attempt to repair this machine yourself unless you are a suitably qualified person.



Note:

Double insulation does not take the place of normal safety precautions when operation the tool. The insulation system is for added protection against injury resulting from a possible electrical insulation failure within your screwdriver.

2. Supply cord and plug

Only use a suitable extension cord suitable for the power input of the machine. Minimum recommended cable size of 1.5mm. Always fully unwind any cord to avoid overheating. It is recommended that when using any power tool outdoors, a suitable safety device such as an RCD Electrical Safety Switch or isolating transformer be used. Always unplug from mains supply when not in use. If the supply cord is damaged, it must be replaced by the manufacturer in order to avoid a hazard. Never carry the power tool by the cord. Keep cord away from any sharp objects or heat source.

3. Water

Do not immerse any part of this power tool or supply cord in water. Do not use with wet hands or use in damp situations.

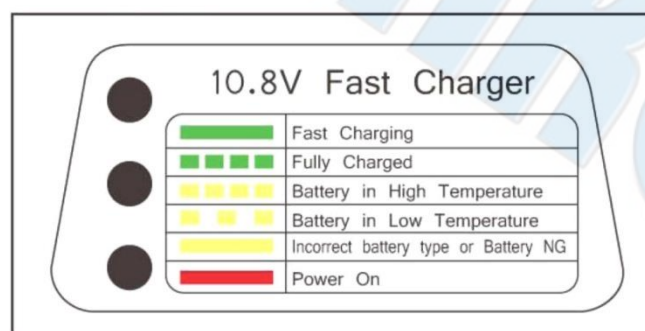
Battery Charging System

This battery and charging system combination is the only one that will work with all Cordless tools. It will accept either the round or oval shaped batteries. The first step in preparing a new tool for operation is to fully charge the battery. **For the transportation safety, all new batteries are shipped discharged and must be charged prior to first use.** Batteries will take 8 hours to recharge at first use.

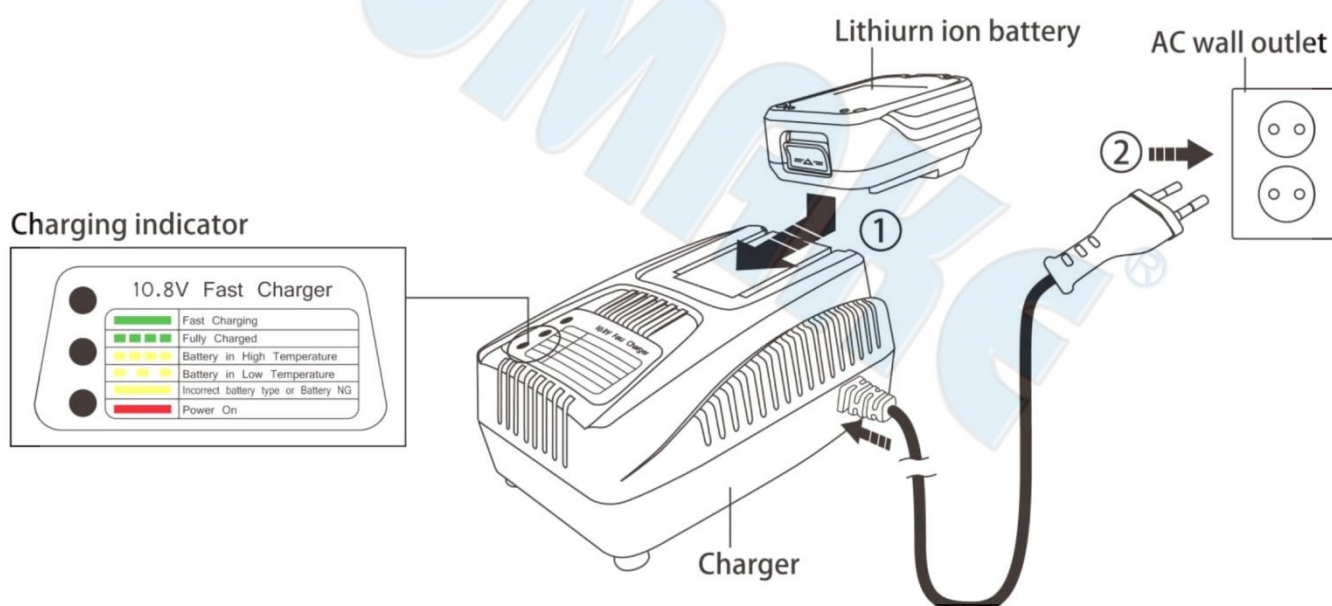
Charging Instructions:

★ If battery is completely discharged the red light and the green light may alternate back and forth for up to 20 minutes. This safety feature slowly recharges the battery until it is ready to accept the full charging current. If the red and green lights continue to alternate after 20 minutes, replace the battery.

Charging Indicator

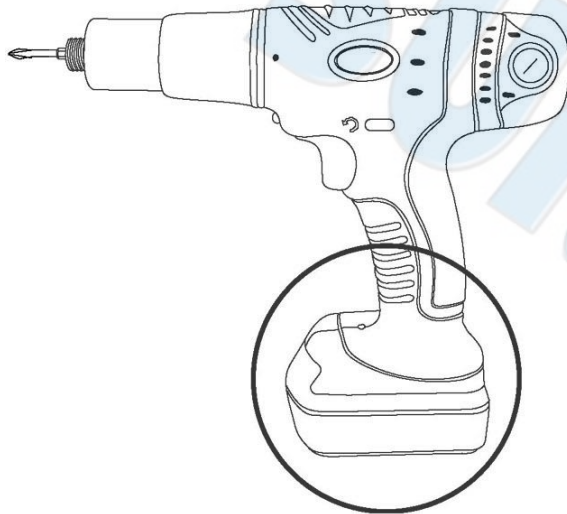


1. Slide battery pack into charger.
2. Plug AC cable into your standard power outlet



Operating Instruction

A. Releasing and inserting battery pack



(1) Release Battery pack

From tool release battery pack by pressing the battery release button. Sliding pack out of handle base.



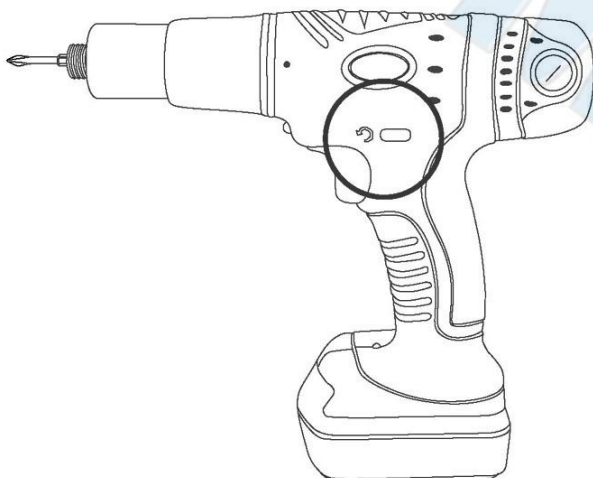
(2) Insert Battery

To insert battery, align battery and slide battery pack into tool. Until it locks into position. Do not force.



B. Forward/Reversing Lever & Trigger Lock

This lever was designed for changing rotation of a bit, and for locking the trigger in an OFF position.



(1) With chuck pointed away from you, move the lever to the far right for reverse rotation.



(2) To activate trigger lock move lever to the center off position.

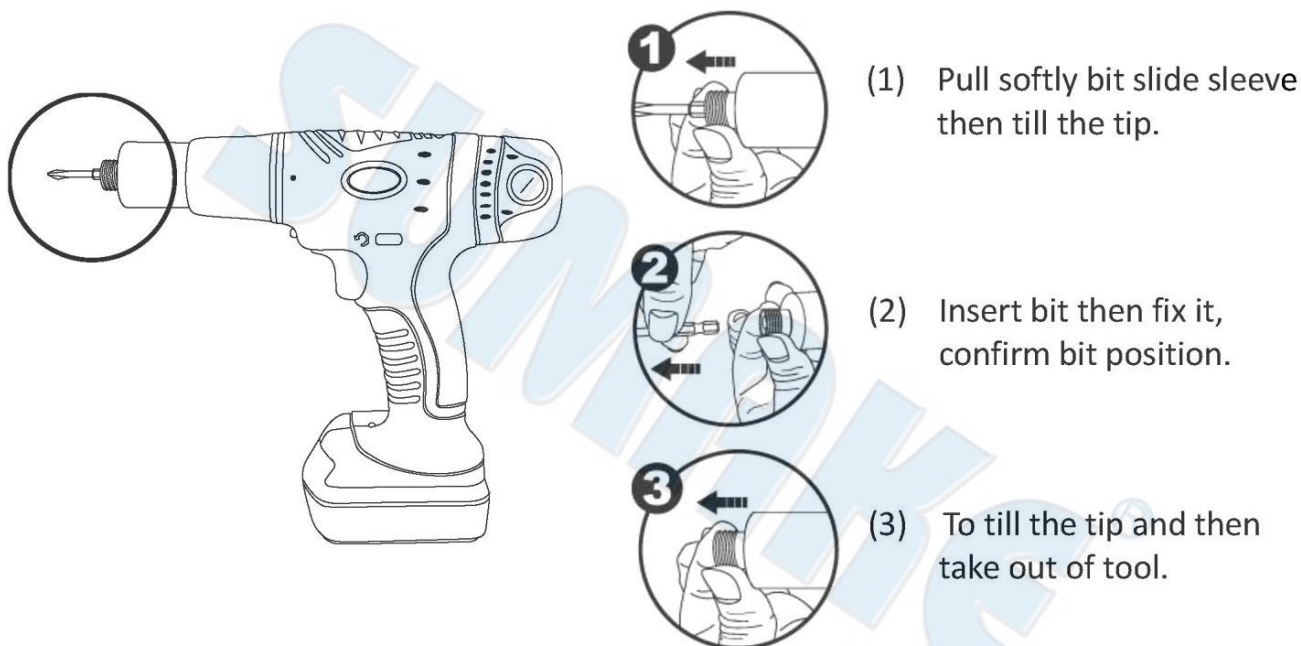


(3) For forward rotation, move the lever to the far left.

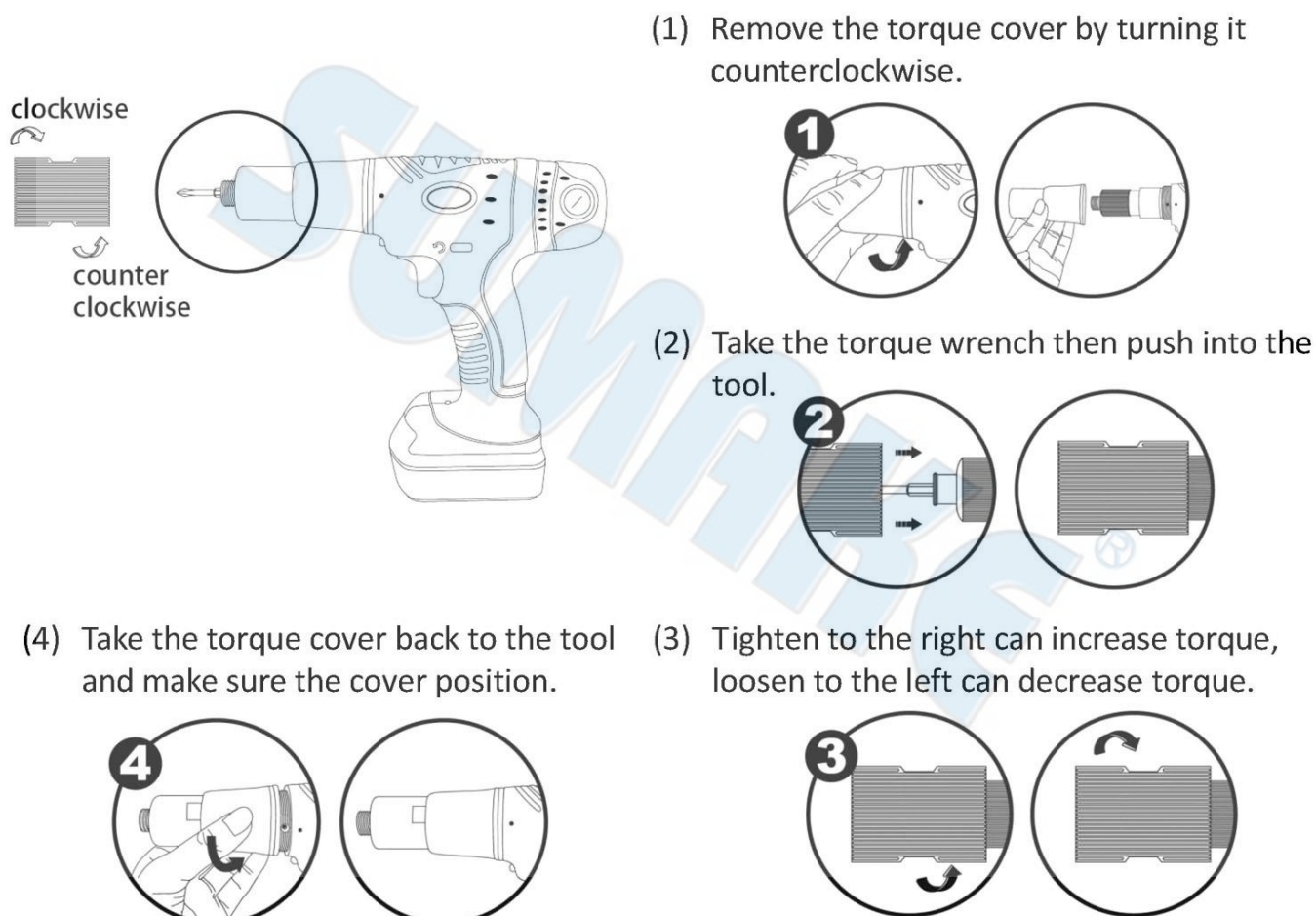
Operating Instruction

C. Inserting bits

Move reverse switch lever to the center OFF position.



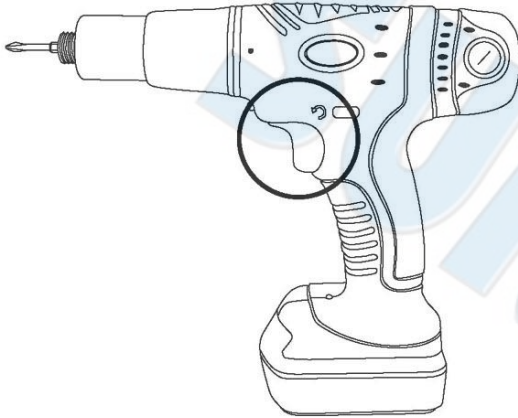
D. Use the torque wrench to adjust torque



Operating Instruction

E. Variable speed controlled trigger switch

From the minimum to the maximum nameplate RPM by the pressure you apply to the trigger.



- (1) Apply more pressure to increase the speed.
- (2) Release pressure to decrease speed.

F. Power Saving Mode

The switch is for power saving mode only and can change the speed. This function can get longer cycle times.

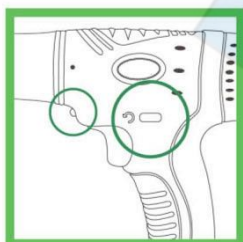


- (1) **ECO** : At 50% power, we suggested that you should try this function at hard joint. Low speed and Soft start function.
- (2) **Normal** : At 75% power, we suggested that you should try this function for general. And normal speed.
- (3) **Sport** : At 100% power, we suggested that you should try this function at maximum torque or higher torque of soft joint. This has high speed and Fast starts.

Operating Instruction

G. Signal Version

Green Light



Forward trigger

- [Push 1/3 trigger]--LED light
- [Push 1/2 trigger]-- LED light , Low speed
- [Push all trigger]--LED light, Max. Speed

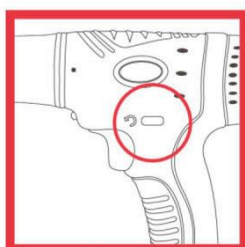
Forward/Reversing lever& trigger lock

- [The trigger can not push]

Reverse trigger

- [Push 1/3 trigger]-- LED light
- [Push 1/2 trigger]-- LED light
- [Push all trigger]--LED light , Reversing

Red Light



Forward trigger/Reverse trigger

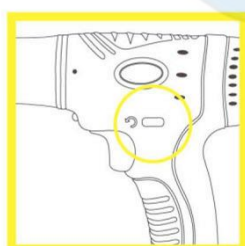
- [Push 1/3 trigger]
 - [Push 2/3 trigger]
 - [Push all trigger]
- Red light(Warning sound) → **Replace the fully charged battery**

Overload Protection mode-At High Temperture

- [Quick operation at near Max. torque] or [Coutinue working without break]

- **First stage--Rapidly Flashing Red Light**
- Second stage--Slow flashing Red Light after 90 seconds, back to normal.**

Yellow Light



Low battery

H. Sleep Mode



Sleep Mode

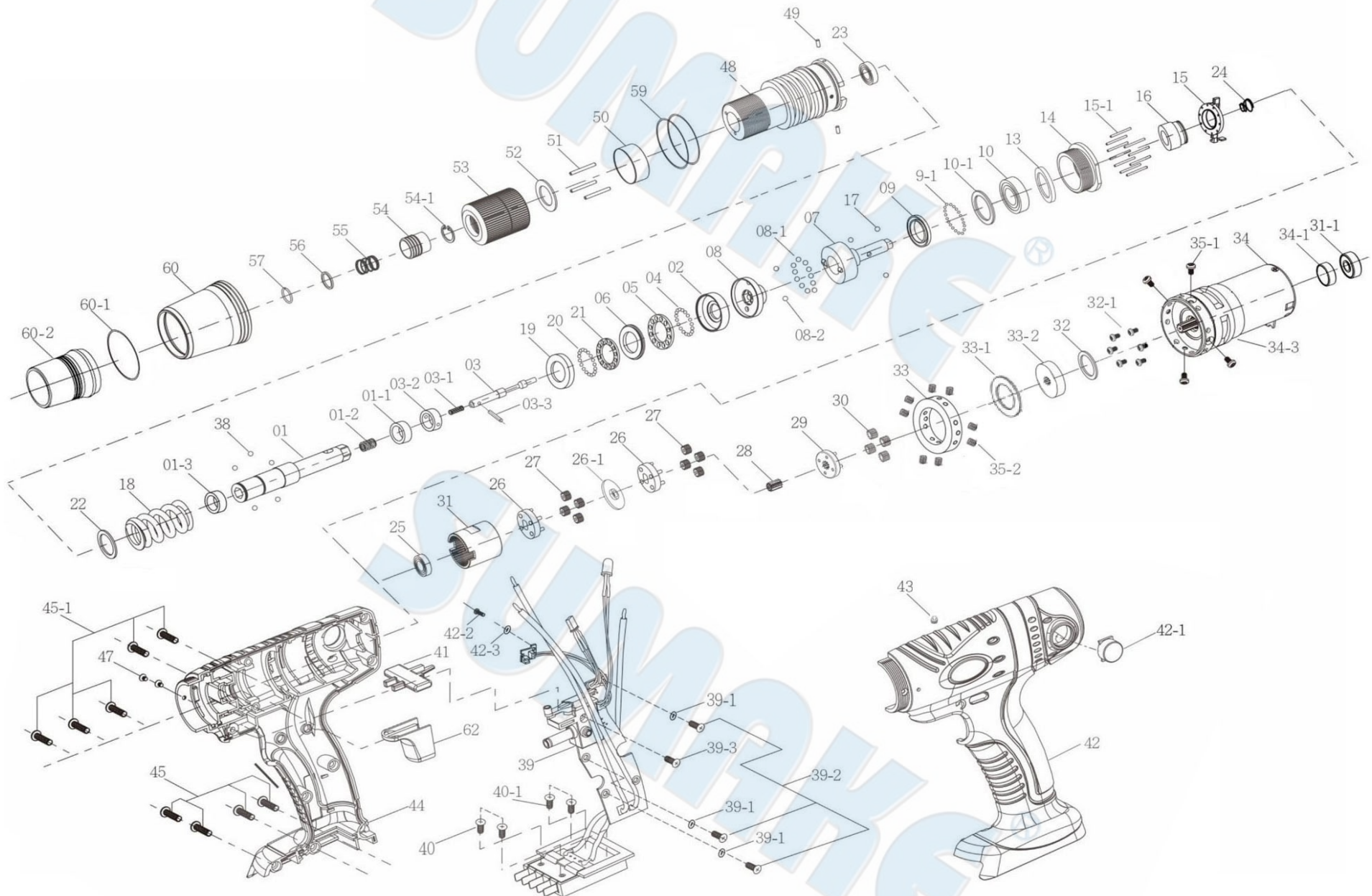
When tool goes into sleep mode, it shuts down the drive after five minutes.

Once awakened, the tool returns to its former operating status.

Our company reserves the right to modify the product without prior notice.

ES-B1009M

10.8V BRUSHLESS FULL AUTO SHUT-OFF CORDLESS SCREWDRIVER - LOW COUNTERFORCE



ES-B1009M

10.8V BRUSHLESS FULL AUTO SHUT-OFF CORDLESS SCREWDRIVER - LOW COUNTERFORCE

PARTS LIST

No.	Parts No.	Description	Q'ty
1	3S7088	Anvil	1
1-1	3S2103	Bushing	1
1-2	6N5123	Spring	1
1-3	3S2138	Bushing	1
2	3S6919	End Plate	1
3	3S6008	Pilot Pin	1
3-1	6N2137	Spring	1
3-2	3S3339	Slide Base	1
3-3	7S5247	Pin	1
4	7S3108	Ball	12
5	7S8152	End Retainer	1
6	3S5245	Ball Race	1
7	3S6624	Rear Clutch	1
8	3S6734	Center Clutch	1
8-1	7S3107	Ball	11
8-2	7S2112	Ball	2
9	7S8109	Retainer	1
9-1	7S2102	Ball	20
10	7S5003	Ball Bearing	1
10-1	2S2131	Washer	1
13	7S5170	Washer	1
14	5L2307	Set Ring	1
15	1M3313	Stop Plate	1
15-1	7S5239	Pin	10
16	3S3340	Slide Base	1
17	7S3108	Ball	3
18	6N3050	Torque Spring	1
19	3S2234	Ball Race	1
20	7S2102	Ball	12
21	7S8114	End Retainer	1
22	7S5164	Washer	1
23	3S2252	Ball Bearing	1
24	6N2139	Spring	1
25	3S2175	Bushing	1
26	1P2290	Fourth Gear Cage	2
26-1	1P2090	14T Main Gear	1
27	1P2130	14T Plate Gear	8
28	1P5101	14T Main Gear	1
29	1P3280	Fifth Gear Cage	1
30	1P2131	14T Plate Gear	4
31	1S2079	Internal Gear	1
31-1	7S5015	Ball Bearing	1
32	6S1011	Washer	1

No.	Parts No.	Description	Q'ty
32-1	7S2161	Screw	6
33	3S2172	Bushing	1
33-1	7S5121	Washer	1
33-2	5S2350	10T Main Accelerator	1
34	1M5022	Motor	1
34-1	3S2257	Bushing	1
34-3	5A2023	Motor Fixed	1
35-1	7S2167	Screw	4
35-2	7S2150	Screw	8
38	7S2112	Ball	5
39	1M3120	Main-P.C.B.	1
39-1	7Q2024	O Ring	3
39-2	7S2156	Screw	3
39-3	7S2154	Screw	1
40	7S2156	Screw	2
40-1	7S5116	Screw	2
41	5L6004-TP	Switch	1
42	5L2075-B	Pistol Housing-B (Orange)	1
42-1	5L3406-B	Carbon Brush Holde Cap	2
42-2	7S5115	Screw	1
42-3	7S5177	Washer	1
43	2U2012	Copper Pin	1
44	5L2075-A	Pistol Housing-A (Orange)	1
45	7S2162	Screw	4
45-1	7S2171	Screw	5
47	7S2165	Screw	2
48	3A5407	Clutch Housing	1
49	6S2015	Pin	2
50	7S3216	Scale Ring	1
51	6S2010	Needle Pin	3
52	7S6131	Regulation Washer	1
53	3A6039	Torque Spring	1
54	5S2114	Bit Slide Sleeve	1
54-1	6N2084	C Ring	1
55	6N2132	Spring	1
56	2S2111	Washer	1
57	6N3302	C Ring	1
59	7Q6121	O Ring	2
60	5A6165	Rear Housing	1
60-1	7Q2019	O Ring	1
60-2	5A6536	Torque Cover	1
62	5L2707	Button	1

NOTE

SUMAKE®

SUMAKE®