

ACCESSORIES PAD

5"(127mm)



1250110 vac, vinyl face
1250111 vac, hook face
low profile

*Red color pad is available



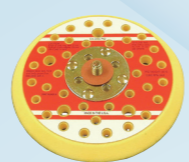
1250170 vac, vinyl face
1250171 vac, hook face
1250172 vac, j-hook face
low profile (8 holes)



1251111 vac, hook face
1251112 vac, j-hook face
low profile, delta (6 holes)
1251142 vac, j-hook face
low profile, delta screen



1250310 vac, vinyl face
1250311 vac, hook face
tapered edge



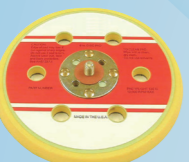
1250142
screen vac,
vinyl face
low profile
*Red color pad is available

6"(152mm)

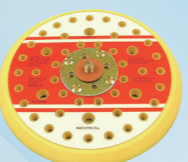


1260110 vac, vinyl face
1260111 vac, hook face
low profile

*Red color pad is available



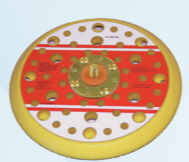
1260160 vac, vinyl face
1260161 vac, hook face
1260162 vac, j-hook face
low profile, 6+1



1260142 screen vac,
j-hook face
low profile
*Red color pad is available



1260310 vac, vinyl face
1260311 vac, hook face
tapered edge



1264542
screen vac+15,
j-hook face
low profile
*Red color pad is available

ACCESSORIES HOSE ADAPTERS & FITTINGS



XPB0065
Ø1" Male hose thread
to Ø28mm male hose
push-on fitting



XPB0087
Ø3/4" Female hose
thread to 1-1/2" friction
fitting



XPB0088
Ø3/4" Female hose
thread to 1" female hose
thread



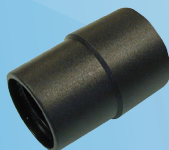
XPB0092
Ø1" Female hose
thread to 1-1/2" friction
fitting



XPB0507
Ø1" Male hose thread to
Ø1" male hose push-on
fitting



XPB0478
Ø1" Male hose push-on
fitting to 1-1/4" male hose
push-on fitting



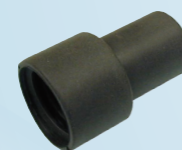
XPB0098
Ø1" Female hose
thread to 1-1/4" female
hose thread



XPB0123
Ø1" Female hose thread
todouble vacuum bag
fitting



XPB0133
Ø3/4" Female hose
thread to double vacuum
bag fitting



XPB0114
Ø1" Female hose thread
to 1" friction fitting



XPB0477
Ø1" Male hose push-on
fitting to 1-1/2" male hose
push-on fitting

Hose Swivel Couplings



XPA1289
Ø3/4"(19mm)



XPA1290
Ø1"(28mm)



XPA1291
Ø3/4"(19mm) to Ø1"(28mm)



Find us on YouTube!

SUMAKE Industrial Co., Ltd.

4F, No.351, Yangguang St., Neihu District, Taipei, Taiwan, Zip:114-91

Tel: 886-2-2659-3500 Fax: 886-2-2659-3700 http://www.sumake.com e-mail: sales@sumake.com.tw



CATA-LET-GR22-01

New Generation

RANDOM ORBITAL ELECTRIC SANDER



Certificate TW04/02301QA



NEW
COOLING
SYSTEM

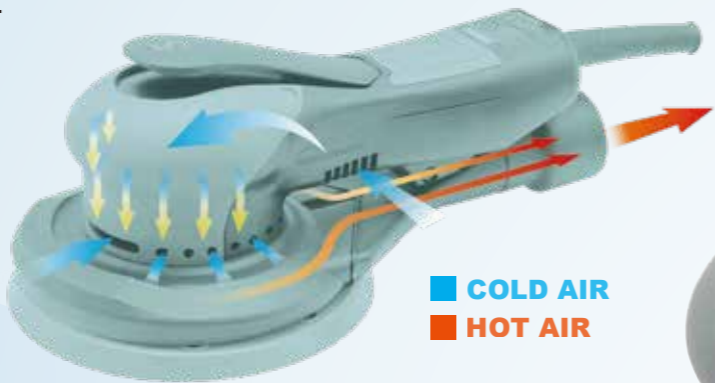
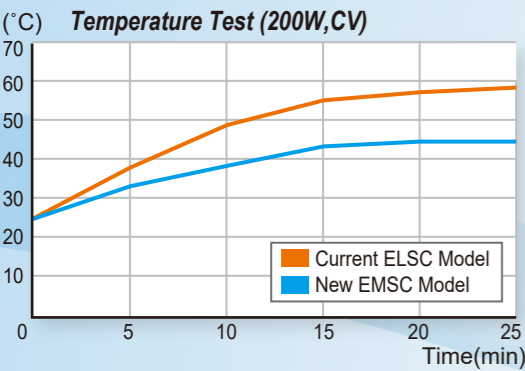
SUMAKE®

MAKE JOBS BETTER THAN EVER

NEW COOLING SYSTEM

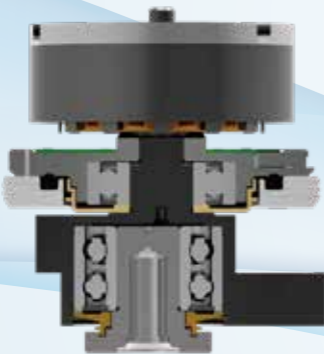
Features: ★Operating with vacuum cleaner is necessary to discover new features.

- New cooling airflow system can less operation temperature over 10°C than current one.
- Cooling system does provide more comfortable operation feeling when long time usage.



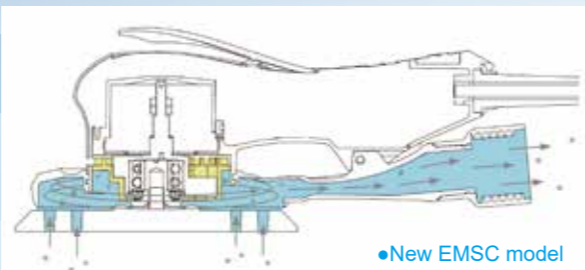
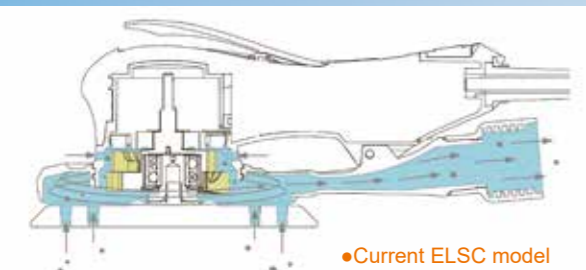
NEW DUST-RESISTANT STRUCTURE

- Features:
- The structure is included front plate, bearing, bridging ring, dust-resistant rubber ring.
 - The patent dust-resistant design shall enhance bearing lifespan greatly and less repair task and cost.



NEW DUST COLLECTION

- Features:
- Because of the patent dust-resistant design, the new generation sander dust collection efficiency enhance.



1 Friendly Speed Control
User friendly speed control design with various speed setting : 4000rpm / 7000rpm / 9000rpm / 10000rpm.

2 Sealed Circuit Board
Sealed circuit board locks dust & moisture out.

3 5M cable is with anti-static measure.

4 Patented Dual-Channels
Patented dual-channels vacuum design enhance vacuum efficiency.

5 Brushless DC Motor
Outstanding brushless DC motor generates 350W force with high torque. Closed motor design prevents dust-stained for lift extension.



Specification:

Model No.	Sander Type	Orbit		Pad Size		Free Speed (r.p.m)	Motor HP (W)	Versions of Voltage AC-in	Length		Weight	
		inch	mm	inch	mm				mm	inch	kgs	lbs
EMSC-B50HM-2.5	Central Vacuum	3/16	2.5	5	127	4,000 7,000 9,000 10,000	Power:150W Rated/350W Max.	110-120V 220-240V	256	10.0	1.47	3.24
EMSC-B50HM		3/32	5						256	10.0	1.51	3.34
EMSC-B60HM-2.5		3/16	2.5	6	152				267	10.5	1.50	3.30
EMSC-B60HM		3/32	5						267	10.5	1.53	3.37
EMSN-B50H-2.5	Non Vacuum	3/32	2.5	5	127	4,000 7,000 9,000 10,000	Power:150W Rated/350W Max.	110-120V 220-240V	230	9.0	1.41	3.10
EMSN-B50H		3/16	5						230	9.0	1.43	3.15
EMSN-B60H-2.5		3/32	2.5	6	152				241	9.48	1.46	3.21
EMSN-B60H		3/16	5						241	9.48	1.43	3.15

