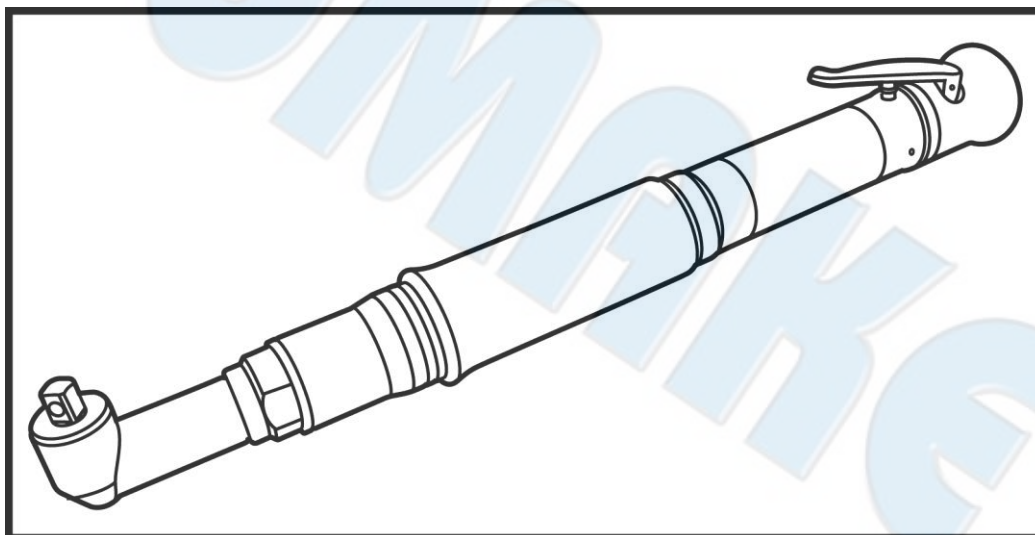




SUMAKE PNEUMATIC TOOLS



High Torque Oil Free Shut Off Air Angle Wrench Square Anvil (Angle Type, Extended Lever Start)

Specification:				Noise and Vibration:			Remark
MODEL	Free Speed	Torque range (±3%)		Vibration EN ISO 28927-2	Noise EN ISO 15744		
	r/min	Nm	Kgf-cm		Sound pressure level	Sound power level	
HAWFE5180	700	6-18	60-180	No Load: 0.8 m/s ²	No Load: 78 dB(A)	No Load: 89 dB(A)	Please always wear ear protector at environment noise level > 80 dB(A) due to risk of impaired hearing!
HAWFE5250	430	10-25	100-250	No Load: 0.9 m/s ²	No Load: 78 dB(A)	No Load: 89 dB(A)	
HAWFE5250A	430	10-25	100-250	No Load: 0.9 m/s ²	No Load: 78 dB(A)	No Load: 89 dB(A)	
HAWFE5280	350	10-28	100-280	No Load: 0.8 m/s ²	No Load: 78 dB(A)	No Load: 89 dB(A)	
HAWFE5400	250	10-40	100-400	No Load: 1.0 m/s ²	No Load: 82 dB(A)	No Load: 93 dB(A)	
HAWFE5400-1	250	10-40	100-400	No Load: 1.0 m/s ²	No Load: 82 dB(A)	No Load: 93 dB(A)	
HAWFE5400-2	250	10-40	100-400	No Load: 1.0 m/s ²	No Load: 82 dB(A)	No Load: 93 dB(A)	
HAWFE5600	180	35-60	350-600	No Load: 1.0 m/s ²	No Load: 82 dB(A)	No Load: 93 dB(A)	
HAWFE5700	130	35-70	350-700	No Load: 1.0 m/s ²	No Load: 82 dB(A)	No Load: 93 dB(A)	
HAWFE51200	100	40-120	400-1200	No Load: 1.0 m/s ²	No Load: 82 dB(A)	No Load: 93 dB(A)	
Recommend Air Pressure: 6.0 kg/cm ²				Uncertainty K= 1.5 m/s ²	Uncertainty K= 3dB		

HAWFE5 series-S-2410G-MIF

SUMAKE INDUSTRIAL CO., LTD

4F,NO.351,Yanguang St.,Neihu District TAIPEI, TAIWAN, ZIP:114-91



EC DECLARATION OF CONFORMITY

We: **SUMAKE INDUSTRIAL CO., LTD.**

4F, No. 351, Yangguang St., Neihu District, Taipei City, Taiwan

declare in sole responsibility that the equipment

Equipment : **HIGH TORQUE OIL FREE SHUT OFF AIR ANGLE WRENCH
SQUARE ANVIL (ANGLE TYPE, EXTENDED LEVER START)**

Model/ Serial No. : **HAWFE5180(250)(250A)(280)(400)(400-1)(400-2)(600)(700)(1200)**

to which this declaration applies, complies with these normative documents:

- Machinery Directive: 2006/42/EC

and conforms to the following EN standard,

- EN ISO 12100: 2010
- EN ISO 11148-6:2012

Name and Signature/Position


Mike Su - Managing Director

Date and Place

2024/9/16

Taipei, Taiwan

HAWFE5 series-D-2410F-MIF

OPERATION MANUAL



3/8"DR socket connect to Anvil.
1/2"DR socket connect to Anvil.



Two hand to use the tool.



Press the trigger for running.



Connect fitting with the air hose.



Please use torque open wrench to adjust the torque:
- **With anticlockwise – torque will be increased.**
- **With clockwise – torque will be reduced.**



Adjust switch for Forward or reverse.



Rear exhaust.



Please add lubricant (CP-OIL01) 1~2 drops weekly (168hr).

AIR SUPPLY

1. Air tools are adversely affected by moisture. Since air from compressor contains much moisture and dust, it is desirable to provide a filter in the pipeline to remove such undesirable elements. Also take the drain out from air tank every day.
2. When using brand-new air hose or air pipe, blow and clean the air hose or pipe inside before installation.
3. Keep air hose or air pipe inside clean to prevent airdrop problem caused by lots of drain and dust accumulated, either to avoid possibly inside diameter smaller problem after long term usage.
4. When disconnect air hose from air tool during operation, do not drop air hose end to the floor as dust or other element may get into air hose.
5. Use air regulator to keep stable air pressure at 6.0kgf-cm² (80~90 psi) at the toll. It is important to get proper air pressure at the toll.
6. With high quality Oil-free motor, any moisture or lubrication injection may damage the air screwdriver, please keep tool dry and avoid oil based substances exposing to the products. For avoiding moisture affection, using Air Dryer is necessary in wet area or under moist weather.

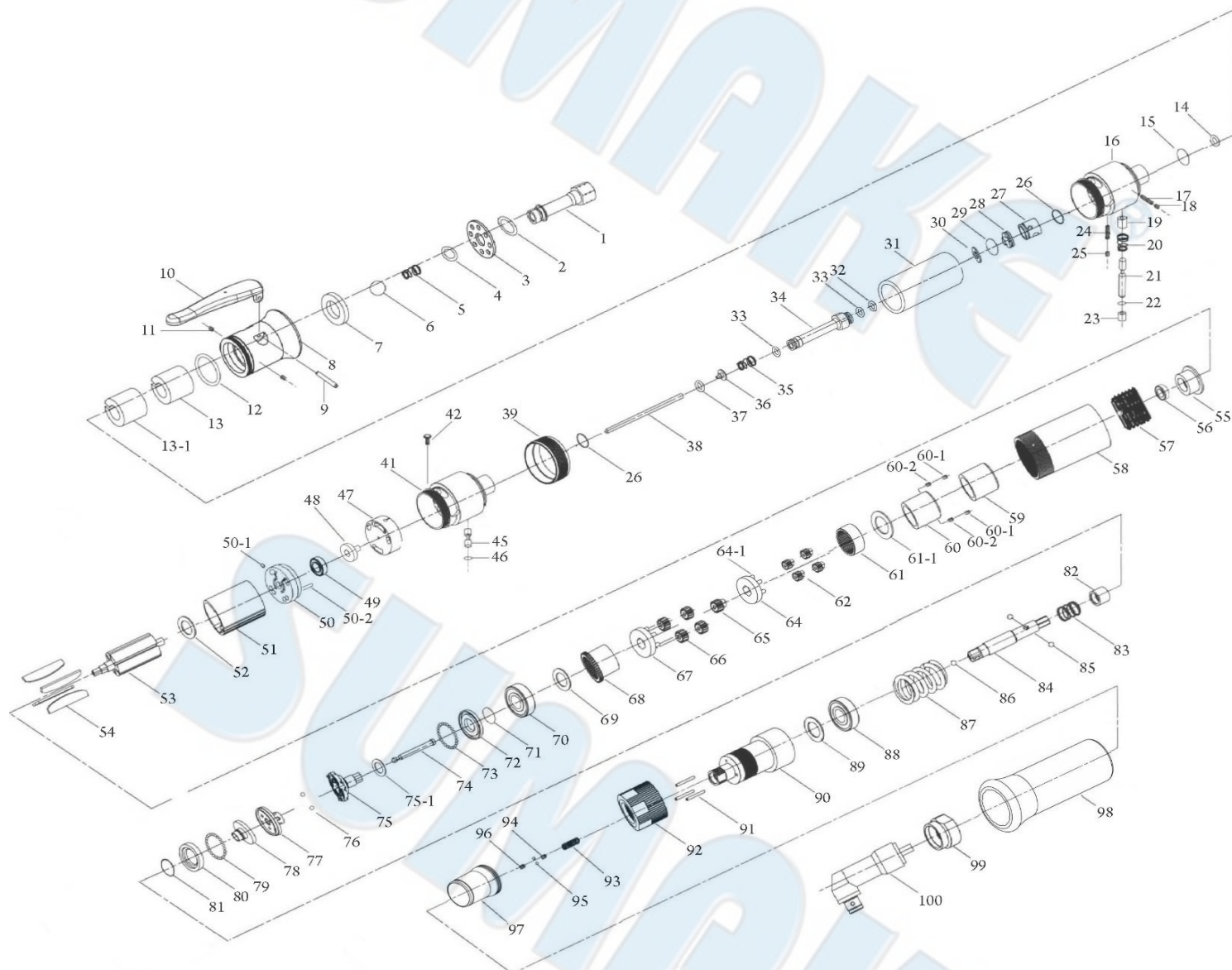
Common Troubleshooting:

Appearance	Possible Cause	Solution
WHEN AIR INTO AIR INLET, THE TOOL CANNOT WORK	Operating rod has worn and tore or bend.	Disassemble and repair
	Spring is in right position	Disassemble and repair
	Parts front plate, rotor, cylinder, end plate are rusty.	Disassemble and repair
	Parts 15t plant gear, 15t plant gear, fifth gear cage and main gear, fifth ear cage, internal gear, blade are broken.	Disassemble and repair
WHEN AIR INTO AIR INLET, THE TOOL RUN WITHOUT PRESS THE TRIGGER	Some of O-rings are loaded or deformed	Disassemble and repair
NON AUTO SHUT-OFF WHEN TORQUE IS REACHED	Some of O-rings are worn and tore.	Disassemble and repair
	Spring (inside of anvil) may not in right position	Disassemble and repair
	Parts slide base, rear clutch, bearing, center clutch, retainer, bushing have worn and tore.	Disassemble and repair
THE MAX TORQUE IS INSUFFICIENT.	Parts front plate, rotor, cylinder, end plate, ball bearing are rusty.	Disassemble and repair
	Motor of blades are worn and tore.	Disassemble and repair
	Rear clutch is worn and tore.	Disassemble and repair
	Torque spring is elastic fatigued.	Disassemble and repair
WHEN THE FREE SPEED IS TOO LOW	Air pressure may not enough.	Check equipment.
	Check air inlet set.	Disassemble and repair

HAWFE5180

HIGH TORQUE OIL FREE SHUT OFF AIR ANGLE WRENCH

3/8" SQUARE ANVIL (ANGLE TYPE, EXTENDED LEVER START)



HAWFE5180

HIGH TORQUE OIL FREE SHUT OFF AIR ANGLE WRENCH

3/8" SQUARE ANVIL (ANGLE TYPE, EXTENDED LEVER START)

PARTS LIST

No.	Parts No.	Description	Q'ty
1	2S6007	Air Inlet Bushing [PT]	1
2	7L0002	Washer	1
3	2S5234	Washer	1
4	2Q5001	O Ring	1
5	6N2105	Cone Spring	1
6	7S2103	Ball	1
7	2P3023	Silencer	1
8	2A6030	Exhaust Deflector	1
9	7S2202	Roll Pin	1
10	5L3106	Lever	1
11	7S2113	Screw	2
12	7Q6105	O Ring	1
13	2P3040	Silencer	1
13-1	2P3010	Silencer	1
14	7Q6100	O Ring	1
15	7Q6105	O Ring	1
16	5A6026	End Housing	1
17	6S2030	Screw	1
18	7S2113	Screw	1
19	2S3010	Inner Bushing	1
20	6N5113	Spring	1
21	2S5026	Valve Pin	1
22	7Q6114	Valve O-Ring	1
23	2S6000	Outer Bushing	1
24	6S2030-1	Screw	1
25	7S2113	Screw	1
26	7Q6116	O-Ring (11x1)	2
27	2S6013	Valve Pin Sleeve	1
28	6S5504	Down Insert Ring	1
29	6N2023	C Ring	1
30	7S5142	Washer	1
31	6V1012	Hand Housing	1
32	7Q6115	O Ring	1
33	2Q5001	O Ring	2
34	1S6293	Air Connect	1
35	6N2145	Cone Spring	1
36	6S6100	Valve Plate	1
37	7Q2006	O Ring	1
38	6S6008	Operating Rod	1
39	2L6033	Switch	1
41	5A6308	End Housing	1
42	7S2108	Set Screw And Washer	1
45	6S2806	Pin	1
46	7Q2025	O Ring	1
47	2P6000	Valve	1
48	6S5115	Rotor Plug	1
49	7S2031	Ball Bearing	1
50	1S6018-A	End Plate	1
50-1	6S2015	Roll Pin	2
50-2	7S5287	Roll Pin	1
51	1P6011	Cylinder	1
52	2S2208	Washer	1

No.	Parts No.	Description	Q'ty
53	1S6044	Rotor	1
54	1P6049	Oil-Free Blade	4
55	1P3021	Front Plate	1
56	7S5001	Ball Bearing	1
57	5A5123	Nut	1
58	5A6084	Center Housing	1
59	3S2255	Accelerator Cover	1
60	5S2386	Accelerator	1
60-1	7S2113	Screw	2
60-2	7S2150	Screw	2
61	1S6071	Internal Gear	1
61-1	2S5121	Washer	1
62	1P6120	15T Main Gear	4
64	1P6348	Gear Cage	1
64-1	7S5261	Pin	4
65	1G6086	10T Main Gear	1
66	1P2101	12T Plate Gear	4
67	1P3283	Gear Cage	1
68	1S6063	Internal Gear	1
69	2S2136	Washer	1
70	7S6503	Ball Bearing	1
71	6N2006	C Ring	1
72	2S6106	Retainer	1
73	7S2102	Ball	30
74	3S5001	Pilot Pin	1
75	3S5214	Rear Clutch	1
75-1	2S5158	Washer	1
76	7S2112	Ball	2
77	3S6770	Center Clutch	1
78	3S6934	End Clutch	1
79	7S3106	Ball	27
80	3S5235	Ball Race	1
81	6N2006	C Ring	1
82	3S2227	Slide Base	1
83	6N5110	Spring	1
84	3S7057	Anvil	1
85	7S2105	Ball	2
86	7Q2002	Regulate Screw	1
87	6N3007	Torque Spring	1
88	3S2162	Ball Bearing	1
89	7S5121	Washer	1
90	3S6132	Angle Clutch Housing	1
91	6S2011	Needle Pin	3
92	3A6007	Torque Ring	1
93	6N6001	Spring	1
94	7S2219	Screw	1
95	7S2102	Ball	2
96	7S5108	Screw	1
97	5A6532	Torque Cover	1
98	5L6010	Soft Cover (Black)	1
99	6S2102	Angle Lock Nut	1
100	5C2026	Angle Head Assembly (Square)	1