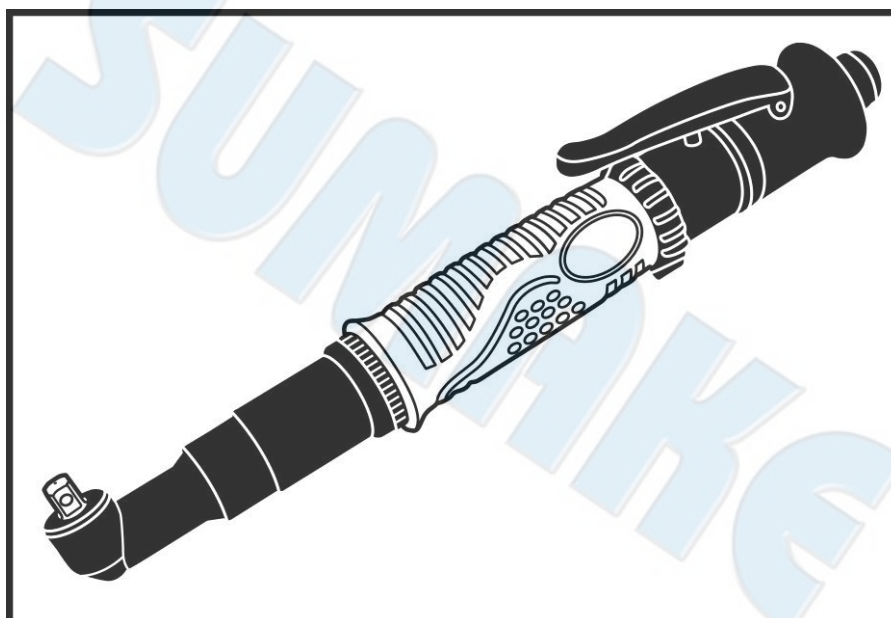




SUMAKE PNEUMATIC TOOLS



Shut Off Air Composite Wrench (Angle Type-Lever Start)

Specification:						Noise and Vibration:			Remark
MODEL	Free Speed	Torque range (±3%)		Min. air hose Bore (mm)		Vibration EN ISO 28927-2	Noise EN ISO 15744		
	r/min	Nm	Kgf-cm	6kg/cm²	5kg/cm²		Sound pressure level	Sound power level	
FAW060	2200	2-6	20-60	8.0	9.5	No Load: 0.8 m/s²	No Load: 75 dB(A)	No Load: 86 dB(A)	Please always wear ear protector at environment noise level > 80 dB(A) due to risk of impaired hearing!
FAW075	1000	1.2-7.5	12-75	8.0	9.5	No Load: 1.0 m/s²	No Load: 74 dB(A)	No Load: 85 dB(A)	
FAW110	550	3-11	30-110	8.0	9.5	No Load: 0.9 m/s²	No Load: 74 dB(A)	No Load: 85 dB(A)	
FAW180	330	3-18	30-180	8.0	9.5	No Load: 0.9 m/s²	No Load: 74 dB(A)	No Load: 85 dB(A)	
FAW180A	330	3-18	30-180	8.0	9.5	No Load: 0.9 m/s²	No Load: 74 dB(A)	No Load: 85 dB(A)	
FAW280	250	5-28	50-280	8.0	9.5	No Load: 0.9 m/s²	No Load: 74 dB(A)	No Load: 85 dB(A)	
FAW280A	250	5-28	50-280	8.0	9.5	No Load: 0.9 m/s²	No Load: 74 dB(A)	No Load: 85 dB(A)	
Recommend Air Pressure: 6.0 kg/cm²						Uncertainty K= 1.5 m/s²	Uncertainty K= 3dB		

FAW060(075)(110)(180)(180A)(280)(280A)-S-2409D-MIF

SUMAKE INDUSTRIAL CO., LTD

4F,NO.351,Yangguang St.,Neihu District TAIPEI, TAIWAN, ZIP:114-91



EC DECLARATION OF CONFORMITY

We: **SUMAKE INDUSTRIAL CO., LTD.**

4F, No. 351, Yangguang St., Neihu District, Taipei City, Taiwan

declare in sole responsibility that the equipment

Equipment : **SHUT OFF AIR COMPOSITE WRENCH
(ANGLE TYPE-LEVER START)**

Model/ Serial No. : **FAW060(075)(110)(180)(180A)(280)(280A)**

to which this declaration applies, complies with these normative documents:

- Machinery Directive: 2006/42/EC

and conforms to the following EN standard,

- EN ISO 12100: 2010
- EN ISO 11148-6:2012

Name and Signature/Position

Mike Su – Managing Director

Date and Place

2023/6/1

Taipei, Taiwan

FAW060(075)(110)(180)(180A)(280)(280A)-D-2403D-MIF

OPERATION MANUAL



AIR SUPPLY

1. Air tools are adversely affected by moisture. Since air from compressor contains much moisture and dust, it is desirable to provide a filter and lubricator in the pipeline to remove such undesirable elements. Also take the drain out from air tank every day.
2. When using brand-new air hose or air pipe. Blow and clean the inside of air hose or pipe before installation.
3. Keep inside of air hose or air pipe clean to prevent airdrop problem caused by the lots of drain and dust accumulated and possibly make the inside diameter smaller in the long use.
4. When disconnect air hose from air tool while in the operation do not drop air hose end to the floor as dust or other element may come into air hose.
5. Use air regulator to keep stable air pressure (dynamical pressure) at 5.5kg/cm²-6.0kg/cm² on the air inlet. It is important to get proper air pressure at the toll. For more details, pls refer our specification.
6. After lubrication, oil will discharged the exhaust upon operation. Flush motor for a few seconds.

LUBRICATION

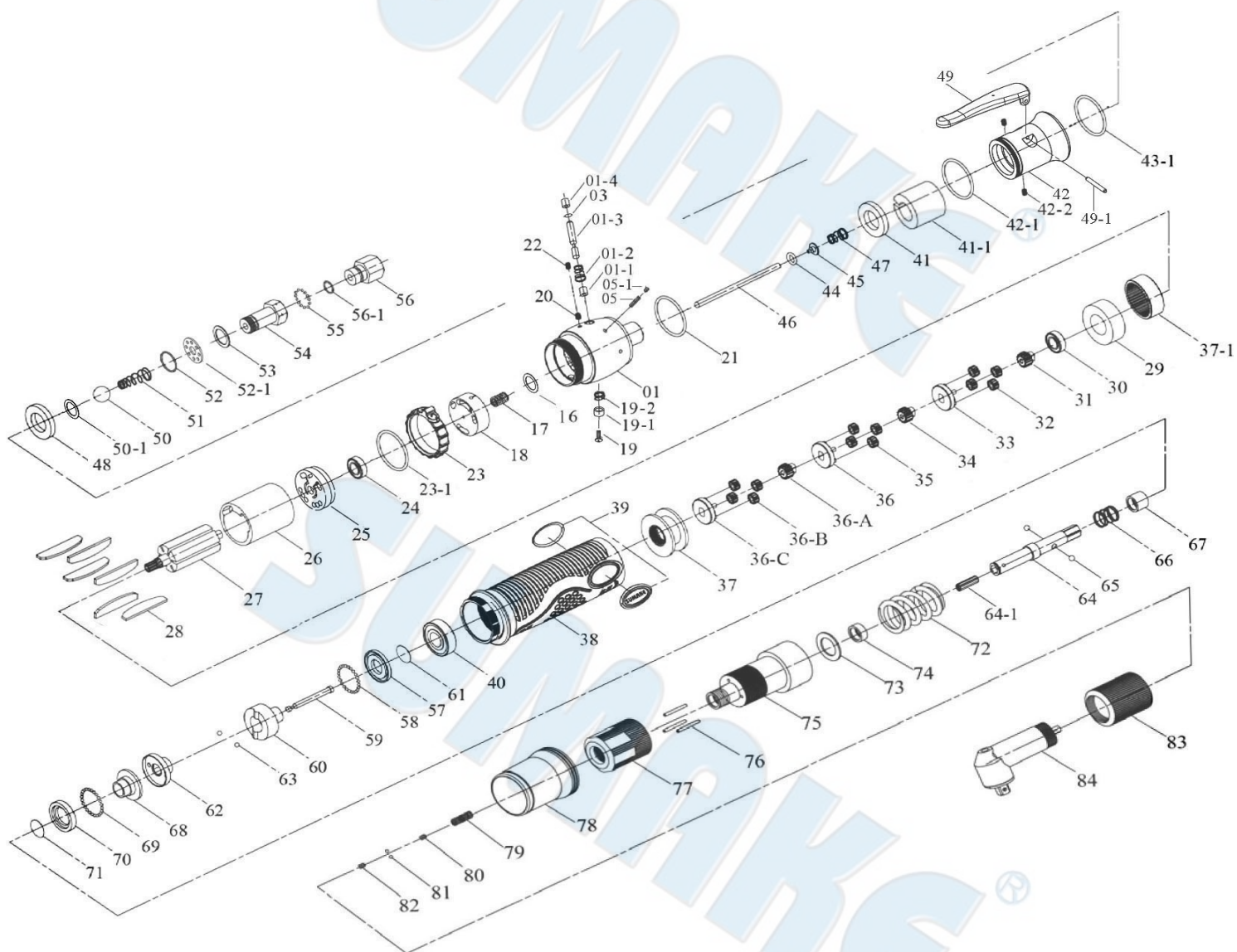
1. Lubrication is indispensable to air tools. The most ideal maintenance is to install one lubricator to a toll for automatic oil feed, but if it is not available, manual lubrication twice every day is recommended for longer life and keeping the efficient function of mechanism.
2. For manual lubrication, disconnect air hose from bushing air inlet and full up spindle oil (#40-#60) into the air inlet.

Common Troubleshooting:

Appearance	Possible Cause	Solution
WHEN AIR INTO AIR INLET, THE TOOL CANNOT WORK	Operating rod has worn and tore or bend.	Disassemble and repair
	Spring is in right position	Disassemble and repair
	Parts front plate, rotor, cylinder, end plate are rusty.	Disassemble and repair
	Parts 15t plant gear, 15t plant gear, fifth gear cage and main gear, fifth ear cage, internal gear, blade are broken.	Disassemble and repair
WHEN AIR INTO AIR INLET, THE TOOL RUN WITHOUT PRESS THE TRIGGER	Some of O-rings are loaded or deformed	Disassemble and repair
NON AUTO SHUT-OFF WHEN TORQUE IS REACHED	Some of O-rings are worn and tore.	Disassemble and repair
	Spring (inside of anvil) may not in right position	Disassemble and repair
	Parts slide base, rear clutch, bearing, center clutch, retainer, bushing have worn and tore.	Disassemble and repair
THE MAX TORQUE IS INSUFFICIENT.	Parts front plate, rotor, cylinder, end plate, ball bearing are rusty.	Disassemble and repair
	Motor of blades are worn and tore.	Disassemble and repair
	Rear clutch is worn and tore.	Disassemble and repair
	Torque spring is elastic fatigued.	Disassemble and repair
WHEN THE FREE SPEED IS TOO LOW	Air pressure may not enough.	Check equipment.
	Check air inlet set.	Disassemble and repair

FAW180

SHUT OFF AIR COMPOSITE WRENCH 1/2" SQUARE ANVIL (ANGLE TYPE-LEVER START)



FAW180

SHUT OFF AIR COMPOSITE WRENCH 1/2" SQUARE ANVIL (ANGLE TYPE-LEVER START)

PARTS LIST

No.	Parts No.	Description	Q'ty
1	5A6115	End Housing	1
1-1	2S3010	Inner Bushing	1
1-2	6N5113	Spring	1
1-3	2S5024	Valve Pin	1
1-4	2S6001	Outer Bushing	1
3	7Q6112	Valve O-Ring	1
5	6S2031-1	Screw	1
5-1	7S2150	Screw	1
16	7Q2011	Valve O-Ring	1
17	6N5006	Spring	1
18	6S6105	Valve	1
19	7S2108	Stoper Screw	1
19-1	2U6001	Switch Bushing	1
19-2	1M4503	Spring	1
20	6S2030	Screw	1
21	2Q2003	O Ring	1
22	7S2113	Screw	1
23	2L6037	Switch (Iron)	1
23-1	7Q2037	O Ring	1
24	7S5001	Ball Bearing	1
25	1S6001	End Plate	1
26	1P6005	Cylinder	1
27	1S6046	Rotor	1
28	1P6051	Blade	6
29	1P3012	Front Plate	1
30	7S2031	Ball Bearing	1
31	1P2274	18T Main Gear	1
32	1P2111	12T Plate Gear	4
33	1P2280	Third Gear Cage	1
34	1P2273	18T Main Gear	1
35	1P2110	12T Plate Gear	4
36	1P2280	Third Gear Cage	1
36-A	1P2096	14T Main Gear	1
36-B	1P2132-T	14T Plate Gear	4
36-C	1P2289	Fourth Gear Cage	1
37	1S6061	Internal Gear	1
37-1	1S6063	Internal Gear	1
38	5A6070	Center Housing	1
39	8E9963	SUMAKE Logo Plate	2
40	7S6503	Ball Bearing	1
41	2P3012	Silencer	1
41-1	2P3040	Silencer	1
42	2A6030	Reduction Ring	1
42-1	7Q6105	O Ring	1
42-2	7S2113	Screw	2
43-1	7Q6105	O Ring	1
44	7Q2006	O Ring	1

No.	Parts No.	Description	Q'ty
45	6S6100	Valve Plate	1
46	6S6010	Operating Rod	1
47	6N2104	Cone Spring	1
48	2P3023	Silencer	1
49	5L3106	Lever	1
49-1	7S2202	Roll pin	1
50	7S2103	Ball	1
50-1	7Q6100	O Ring	1
51	6N2105	Cone Spring	1
52	2Q5001	O Ring	1
52-1	2S5234	Washer	1
53	7L0002	Washer	1
54	2S6902	Air Inlet	1
55	7S2102	Ball	13
56	2S2071	Air Inlet Bushing [PT]	1
	2S2070	Air Inlet Bushing [NPT]	1
56-1	7Q6103	O Ring	1
57	2S6106	Retainer	1
58	7S2102	Ball	32
59	3S5001	Pilot Pin	1
60	3S5214	Rear Clutch	1
61	6N2006	C Ring	1
62	3S6753	Center Clutch	1
63	7S2112	Ball	4
64	3S7057	Anvil [PULL]	1
64-1	7Q2002	Regulate Screw	1
65	7S2105	Ball	2
66	6N5110	Spring	1
67	3S2227	Slide Base	1
68	3S5221	End Clutch	1
69	7S2102	Ball	25
70	3S5235	Ball Race	1
71	6N2006	C Ring	1
72	6N3007	Torque Spring	1
73	2S5243	Washer	1
74	3S2162	Bushing	1
75	3S6132	Angle Clutch Housing	1
76	6S2011	Needle Pin	3
77	3A6007	Torque Ring	1
78	5A6532	Torque Cover	1
79	6N6001	Spring	1
80	7S2111	Screw	1
81	7S2102	Ball	2
82	7S5108	Screw	1
83	6S2102	Angle Lock Nut	1
84	5C2030	1/2" Angle Head Assembly (Square)	1



Read all these safety instructions before operating this product and save these instructions.

The tool has been manufactured in conformity with the instruction of EU machine directive. The EU mark will be considered void in the event of inexpert repairs, the use of non-original parts and in case of non-observance of the safety instructions in the user's manual.

Possible direct or indirect consequential damages are not the responsibility of SUMAKE Industrial co., Ltd.

General safety rules:

1. Watch the tool at all times when in use.
2. People under the influence of alcohol or drugs are not allowed to use, repair or maintain the tool.
3. Keep unqualified persons, children, etc. away from the tool.
4. Keep work area clean and with sufficient daylight or artificial lighting. The work area on which the machine is used must be cleaned up. Disorder is a potential cause of accidents.
5. Danger of explosion. Never use oxygen and combustible gas as an air supply for the tool which may be ignited by spark and cause fire or explosion.
6. Never use gasoline or other flammable liquids to clean the tool.
7. Do not use air tools in potentially explosive atmospheres such as in the presence of flammable liquids, cleaning solvents, fluid energy or stored gases.
8. Do not expose air tools to rain. Do not use air tools in damp or wet locations.
9. When a fault or failure is detected, the tool must immediately be disconnected from the air supply and returned for repair.
10. When not in use, keep tools in a dry place, either locked up or in a high place, out of the reach of children.
11. Do not force small air tools to do the job of a heavy –duty task. Do not use air tool for purpose of which was not intended.
12. Wear suitable ear protection at environment noise level >80dB(A) and safety spectacles when using the tool. Always wear approved safety goggles if work in dusty. This also applies to other persons in the nearby vicinity.
13. Do not wear loose clothing or jewelry. They can be caught in moving parts. Rubber gloves and non-skid foot wear are recommended when working outdoors. Wear protective hair covering to contain long hair.
14. Keep proper footing and balance at all times.
15. Use clamps or a vice to hold work-piece. It is safer than using your hand and free both hands to operate the air tool.
16. When not use, before performing service or changing accessories, please disconnect tool from air compressor.
17. Do not carry plugged in air tool with your finger on the switch trigger. Be sure switch is in the "OFF" position when connecting to air supply.
18. Watch what you are doing. Use common sense, even unsafe situation or unbalanced positions, particularly when you are tired.
19. Air powered tools can vibrate in use. Vibration, repetitive motions or uncomfortable positions may be harmful to your hands or arms. Stop using any tool if discomfort, tingling feeling or pain occurs. Seek medical advice before resuming use.
20. For multiple hazards, read and understand the safety instructions before installing, operating, repairing, maintaining, changing accessories on, or working near the assembly power tool for threaded fasteners. Failure to do so can result in serious bodily injury.
21. Only qualified and trained operators should install, adjust or use the assembly power tool for threaded fasteners.
22. Do not modify this assembly power tool for threaded fasteners. Modifications can reduce the effectiveness of safety measures and increase the risks to the operator.
23. Do not discard the safety instructions; give them to the operator.
24. Tools shall be inspected periodically to verify that the ratings and markings required by this part of EN ISO 11148 are legibly marked on the tool. The employer/user shall contact the manufacturer to obtain replacement marking labels when necessary.

Safety precautions for projectile hazards

1. Failure of the workpiece, of accessories or even of the inserted tool itself can generate high-velocity projectiles.
2. Always wear impact-resistant eye protection during the operation of the assembly power tool for threaded fasteners. The grade of protection required should be assessed for each use.
3. Ensure that the workpiece is securely fixed.

Safety precautions for entanglement hazards

1. Entanglement hazards can result in choking, scalping and/or lacerations if loose clothing, personal jewellery, neckware, hair or gloves are not kept away from the tool and accessories.
2. Gloves can become entangled with the rotating drive, causing severed or broken fingers.
3. Rotating drive sockets and drive extensions can easily entangle rubber-coated or metal-reinforced gloves.
4. Do not wear loose-fitting gloves or gloves with cut or frayed fingers.
5. Never hold the drive, socket or drive extension.
6. Keep hands away from rotating drives.

Safety precautions for operating hazards

1. The use of the tool can expose the operator's hands to hazards including crushing, impacts, cuts and abrasions and heat. Wear suitable gloves to protect hands.
2. Operators and maintenance personnel shall be physically able to handle the bulk, weight and power of the tool.
3. Hold the tool correctly; be ready to counteract normal or sudden movements and have both hands available.
4. Maintain a balanced body position and secure footing.
5. Release the start-and-stop device in the case of an interruption of the energy supply.
6. Use only lubricants recommended by the manufacturer.
7. Do not use in confined spaces and beware of crushing hands between tool and workpiece, especially when unscrewing.

Safety precautions for repetitive motions hazards

1. When using a power tool, the operator can experience discomfort in the hands, arms, shoulders, neck, or other parts of the body.
2. While using an assembly power tool for threaded fasteners, the operator should adopt a comfortable posture whilst maintaining secure footing and avoiding awkward or off-balanced postures. The operator should change posture during extended tasks, which can help avoid discomfort and fatigue.

3. If the operator experiences symptoms such as persistent or recurring discomfort, pain, throbbing, aching, tingling, numbness, burning sensations or stiffness, these warning signs should not be ignored. The operator should tell the employer and consult a qualified health professional.

Safety precautions for accessory hazards

1. Disconnect the assembly power tool for threaded fasteners from the energy supply before changing the inserted tool or accessory.
2. Do not touch sockets or accessories during impacting, as this increases the risk of cuts, burns or vibration injuries.
3. Use only sizes and types of accessories and consumables that are recommended by the assembly power tool for threaded fasteners manufacturer.
4. Use only impact-wrench-rated sockets in good condition, as poor condition or hand sockets and accessories used with impact wrenches can shatter and become a projectile.

Safety precautions for workplace hazards

1. Slips, trips and falls are major causes of workplace injury. Be aware of slippery surfaces caused by the use of the tool and also of trip hazards caused by the air line or hydraulic hose.
2. Proceed with care in unfamiliar surroundings. Hidden hazards, such as electricity or other utility lines, can exist.
3. The assembly power tool for threaded fasteners is not intended for use in potentially explosive atmospheres and is not insulated against coming into contact with electric power.
4. Make sure there are no electrical cables, gas pipes, etc., that can cause a hazard if damaged by use of the tool.

Safety precautions for dust and fume hazards

1. Dust and fumes generated when using assembly power tools for threaded fasteners can cause ill health (for example, cancer, birth defects, asthma and/or dermatitis); risk assessment and implementation of appropriate controls for these hazards are essential.
2. Risk assessment should include dust created by the use of the tool and the potential for disturbing existing dust.
3. Direct the exhaust so as to minimize disturbance of dust in a dust-filled environment.
4. Where dust or fumes are created, the priority shall be to control them at the point of emission.
5. All integral features or accessories for the collection, extraction or suppression of airborne dust or fumes should be correctly used and maintained in accordance with the manufacturer's instructions.
6. Use respiratory protection in accordance with employer's instructions and as required by occupational health and safety regulations.

Safety precautions for noise hazards

1. Unprotected exposure to high noise levels can cause permanent, disabling, hearing loss and other problems, such as tinnitus (ringing, buzzing, whistling or humming in the ears).
2. Risk assessment and implementation of appropriate controls for these hazards are essential.
3. Appropriate controls to reduce the risk may include actions such as damping materials to prevent workpieces from "ringing".
4. Use hearing protection in accordance with employer's instructions and as required by occupational health and safety regulations.
5. Operate and maintain the assembly power tool for threaded fasteners as recommended in the instruction handbook, to prevent an unnecessary increase in noise levels.
6. If the assembly power tool for threaded fasteners has a silencer, always ensure it is in place and in good working order when the assembly power tool for threaded fasteners is operating.
7. Select, maintain and replace the consumable/inserted tool as recommended in the instruction handbook, to prevent an unnecessary increase in noise.

Safety precautions for vibration hazards

1. Exposure to vibration can cause disabling damage to the nerves and blood supply of the hands and arms.
2. Keep the hands away from the sockets.
3. Wear warm clothing when working in cold conditions and keep your hands warm and dry.
4. If you experience numbness, tingling, pain or whitening of the skin in your fingers or hands, stop using the assembly power tool for threaded fasteners, tell your employer and consult a physician.
5. Operate and maintain the assembly power tool for threaded fasteners as recommended in the instruction handbook, to prevent an unnecessary increase in vibration levels.
6. Do not use worn or ill-fitting sockets or extensions, as this is likely to cause a substantial increase in vibration.
7. Select, maintain and replace the consumable/inserted tool as recommended in the instruction handbook, to prevent an unnecessary increase in vibration levels.
8. Sleeve fittings should be used where practicable.
9. Support the weight of the tool in a stand, tensioner or balancer, if possible.
10. Hold the tool with a light but safe grip, taking account of the required hand reaction forces, because the risk from vibration is generally greater when the grip force is higher.

Additional safety instructions for pneumatic power tools

1. Always shut off air supply, drain hose of air pressure and disconnect tool from air supply when not in use, before changing accessories or when making repairs.
2. Never direct air at yourself or anyone else.
3. Whipping hoses can cause severe injury. Always check for damaged or loose hoses and fittings.
4. Cold air shall be directed away from the hands.
5. Do not use quick-disconnect couplings at tool inlet for impact and air-hydraulic impulse wrenches. Use hardened steel (or material with comparable shock resistance) threaded hose fittings.
6. Whenever universal twist couplings (claw couplings) are used, lock pins shall be installed and whipcheck safety cables shall be used to safeguard against possible hose-to-tool and hose-and-hose connection failure.
7. Do not exceed the maximum air pressure stated on the tool.
8. For torque-control and continuous-rotation tools, the air pressure has a safety critical effect on performance. Therefore, requirements for length and diameter of the hose shall be specified.
9. Never carry an air tool by the hose.

General preparation and connection:

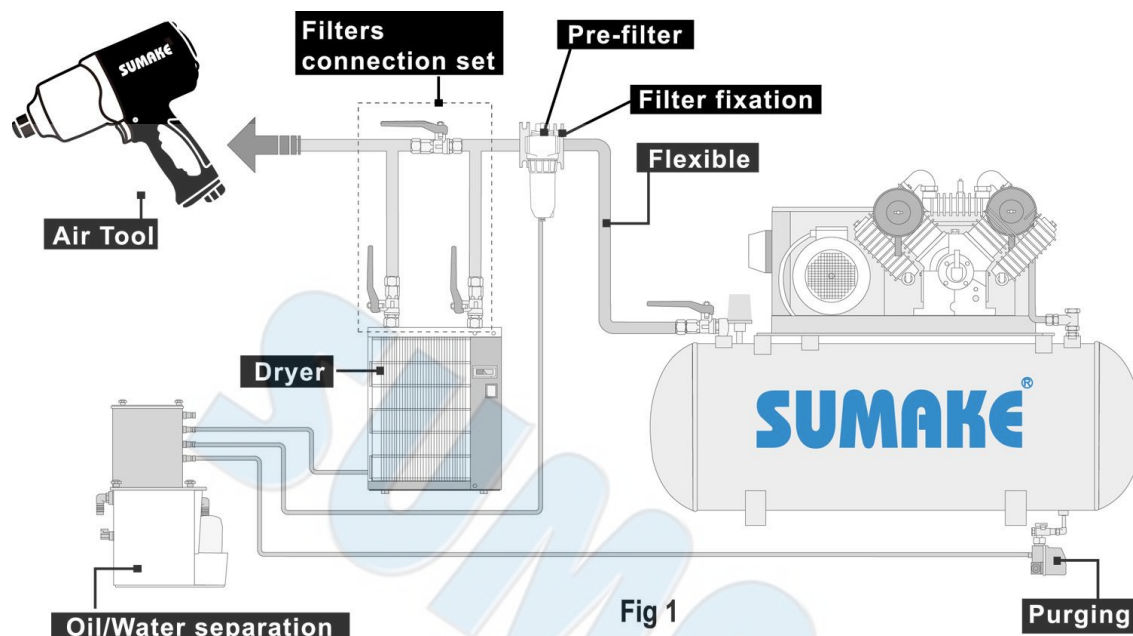


Fig 1

1. When using brand-new air hose or air pipe. Blow and clean the inside of air hose or pipe before installation.
2. Keep inside of air hose or air pipe clean to prevent airdrop problem caused by the lots of drain and dust accumulated and possibly make the inside diameter smaller in the long use.
3. Before connecting the air hose, apply 4 to 5 drops of SAE#10-20 spindle oil at the air inlet. Also, every 3 to 4 hours of operation, oiling is necessary. Twist Teflon thread tape to ensure a proper seal air inlet. Then tighten the air coupler into air tool.
4. The supplied compressed air must be clean and dry, with the appropriate oil mist. Use an air treatment unit; filter, regulator and lubricator.
5. Please refer Fig.1 illustration shows the correct mode of connection to the air supply system which will increase the efficiency and useful life of the tool.
6. The quick connect coupling and hose must have sufficient air flow capacity. We recommend an air hose with a diameter of 10mm (3/8").
7. To ensure a good performance. The operation pressure at the compressed air inlet should not exceed 6.2bar (90psi) (unless indicated otherwise). Higher operating pressures may cause damaged or excessive wear. Operating pressures below 5.3bar may cause pressure or power loss.



Risk of injury

1. Compressed air can inflict serious injuries. Therefore never point the air hose at another person or yourself.
2. Shut – off the air supply and disconnect the tool in case:
 - You want to change or replace accessories.
 - You want to clean, repair or maintain the tool.
 - The tool is not going to use for some times.
3. Check compressed air hose before use. If it is damaged, broken, torn, or deformed, the hose is not to be connected to the tool.
4. Always check the pneumatic couplings before using the tool. If they show signs of damage, fracture, cracking or excessive corrosion, the respective tool or the air hose is not to be used.
5. Use only qualified adapters and connectors, In case of wear they are to be replaced immediately.
6. Only use air pipes that are fit for the use at maximum pressure.

Maintenance instruction:

1. Dry the filter (fig1) and the air inlet of the tool.
2. Lubricate the quick connect coupling to prevent blocking.
3. Air tool require lubrication throughout the life of the tool. The air motor and bearing uses compressed air to start the tool. The moisture in compressed air will rust the air motor; you must lubricate the motor daily.
4. Avoid storing the tool in a location subject to high humidity. If the tool is left as it is used, the residual moisture inside the tool can cause rust.
5. Before storage, lubricate tool and run it for a few seconds.
6. Regular inspection of spindles, threads, and clamping devices in respect of wear and tolerances for location of abrasive products.
7. If the tool is too seriously damage to be used anymore, recycle raw material instead of disposing as waste. The machine, accessories and packaging should be sorted for environmental-friendly recycling. Check with your local authority or retailer for recycling advice.



www.SUMAKE.com

www.AIRCOMPRESSOR.com.tw