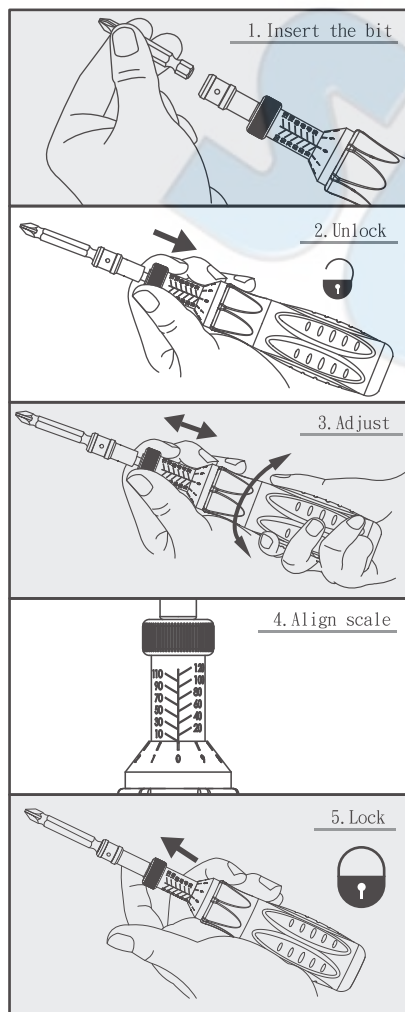


## STANDARD

We calibrate each torque wrench at the factory using torque standards according to DIN ISO 6789 & ASME B107.300-2010, and certifies it meets the accuracy requirements of specifications DIN ISO 6789 and ASME B107.300-2010.

| CONVERT FROM | TO     | MULTIPLY BY |
|--------------|--------|-------------|
| ozf-in       | lbf-in | 0.0625      |
| lbf-in       | ozf-in | 16          |
| lbf-in       | kgf-cm | 1.1519      |
| lbf-in       | lbf-ft | 0.083333    |
| lbf-in       | kgf-m  | 0.011519    |
| lbf-in       | N-m    | 0.1130      |
| lbf-in       | dN-m   | 1.130       |
| lbf-ft       | N-m    | 1.356       |
| lbf-ft       | kgf-m  | 0.1382      |
| lbf-ft       | lbf-in | 12          |
| N-m          | dN-m   | 10          |
| N-m          | kgf-cm | 10.20       |
| N-m          | kgf-m  | 0.10197     |
| N-m          | lbf-in | 8.8507      |
| N-m          | lbf-ft | 0.73756     |
| dN-m         | lbf-in | 0.885       |
| dN-m         | N-m    | 0.100       |
| kgf-cm       | lbf-in | 0.8681      |
| kgf-cm       | N-m    | 0.09807     |
| kgf-m        | lbf-ft | 7.233       |
| kgf-m        | N-m    | 9.807       |

## OPERATION



## SAFETY INSTRUCTIONS



### WARNING RISK OF FLYING PARTICLES

- USE OF DAMAGED HAND TOOLS, SOCKETS, EXTENSIONS AND ACCESSORIES MAY RESULT IN INJURY.
- DO NOT USE TORQUE SCREWDRIVER AS A HAMMER.
- TORQUE SCREWDRIVER NOT IN CALIBRATION MAY CAUSE DAMAGE TO PARTS OR TOOLS.
- DO NOT USE EXTENSIONS ON HANDLE AS DAMAGE TO TORQUE SCREWDRIVER WILL RESULT.
- TO AVOID A "SIDE LOAD" OCCURRED WITH INACCURATE TORQUE READINGS, PLEASE KEEP TORQUE SCREWDRIVER VERTICAL TO THE FLAT OF USE.



### ALWAYS USE EYE PROTECTION WHILE USING HAND TOOLS



### WARNING

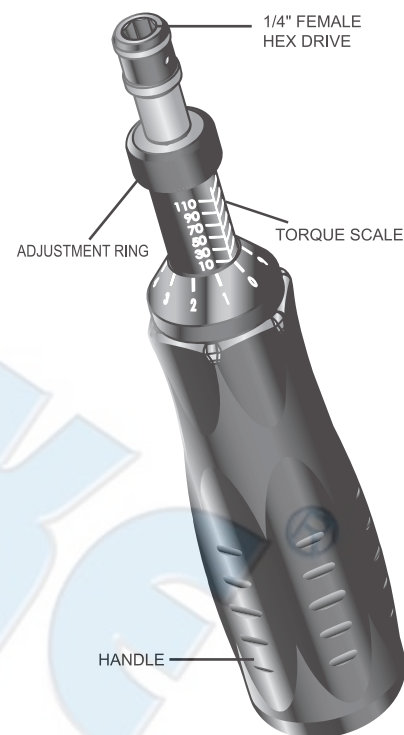


### INJURY MAY RESULT FROM ELECTRICAL SHOCK

- HANDLE IS NOT INSULATED, DO NOT USE ON LIVE ELECTRICAL OR HIGH VOLTAGE CIRCUITS.

# SUMAKE<sup>®</sup>

## TORQUE SCREWDRIVER INSTRUCTION MANUAL



## CARE AND MAINTENANCE

1. The torque screwdriver is a precision instrument, and should be stored with care. Don't throw it around, use hammer with it.
2. The torque screwdriver is lubricated for life and should not be oiled. The only exception is the ratchet head which may be lubricated as needed for smooth operation.
3. The torque screwdriver is a precision measuring instrument. Calibration must be done regularly to ensure accuracy and it's the owner's responsibility. Suggested calibration period is at least every 12 months or even shorter depending on situation.
4. Always store the torque screwdriver in the box after use to stay away from dirt and humidity.
5. Never disassemble the torque screwdriver by yourself. For any need to disassemble the torque screwdriver or repair it, please look for assistance from qualified service station. Any incorrect action to disassemble the torque screwdriver may result in damage of this instrument.