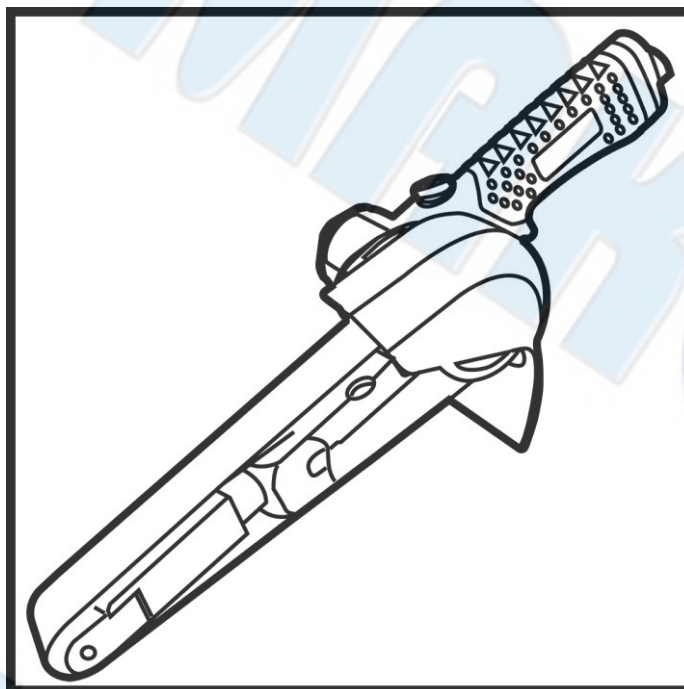




SUMAKE PNEUMATIC TOOLS



Air Belt Sander (30x540mm) ST-BS510H

Specification:

Free Speed	18,000 r/min
Sanding Pad	1-1/5" x 21-1/4" (30 x 540 mm)
Motor	0.9HP
Air Consumption	17 CFM (480 L/min)
Overall Length	15-3/4" (400 mm)
Air Inlet (PT)	1/4" (6.35 mm)
Air Hose (I.D.)	3/8" (10 mm)
Air Pressure	90 psi (6.3 bar)
Net Weight	2.43 lbs (1.1 kg)

Noise and Vibration:

Vibration EN ISO 28927-3	Noise EN ISO 15744	Remark
No Load: 2.9 m/s ² Uncertainty K= 1.5 m/s ²	Sound Pressure Level load: 85 dB(A)	Please always wear ear protector at environment noise level > 80 dB(A) due to risk of impaired hearing!
	Sound power level load: 96 dB(A)	
	Uncertainty K= 3dB	

SUMAKE INDUSTRIAL CO., LTD

4F,NO.351,Yangguang St.,Neihu District TAIPEI, TAIWAN, ZIP:114-91

ST-BS510H-S-2406A-STF



EC DECLARATION OF CONFORMITY

We: **SUMAKE INDUSTRIAL CO., LTD.**

4F, No. 351, Yangguang St., Neihu District, Taipei City, Taiwan

declare in sole responsibility that the equipment

Equipment : **AIR BELT SANDER (30x540mm)**

Model/ Serial No. : **ST-BS510H**

to which this declaration applies, complies with these normative documents:

- Machinery Directive: 2006/42/EC

and conforms to the following EN standard,

- EN ISO 12100: 2010
- EN ISO 11148-8:2011

Name and Signature/Position



Mike Su - Managing Director

Date and Place

2024/5/2

Taipei, Taiwan

ST-BS510H-D-2406A-STF

Application:

It is useful for various sanding work, to smooth wood and automotive or wood finishes by abrasion with sandpaper. (Belt-Sander)

Belt mounting dangers:

- Correct belt mounting is necessary to prevent injury from loosen belts.
- Do not use chipped or cracked sanding belts
- Use only belts fitting the machine easily. If you need more force than usual to install the belt the size could be differ from the requirement.
- Before sanding, test belt by briefly running tool at full throttle. Be sure to use a barrier (such as under a heavy working table) to stop any possible loosen belts.
- A cracked sanding belt will cause serious hurts !
- Regularly check the speed of the device by a tachometer to make sure the speed has not been exceeded and is conform with the abrasive belts you use. The approvable speed is mentioned down on the data sheet which comes with the belts.
- Never use a belt marked with a speed lower than this tool !
- Do not wear jeweled or loose clothing and avoid long hair.
- Choking can happen if neckwear is not kept away from tool and accessories !
- Avoid direct contact with accessories during and after use. Safety gloves will reduce the risk of cuts or burns.
- Use only proper accessories retainers (refer to parts list).
- Use only sanding belts with the correct diameter, dimension and approvable speed according to the technical data of this tool.
- This unit has been developed as belt sander and must only used for this function. Any misuse could occur serious health damage.

Dangers in use:

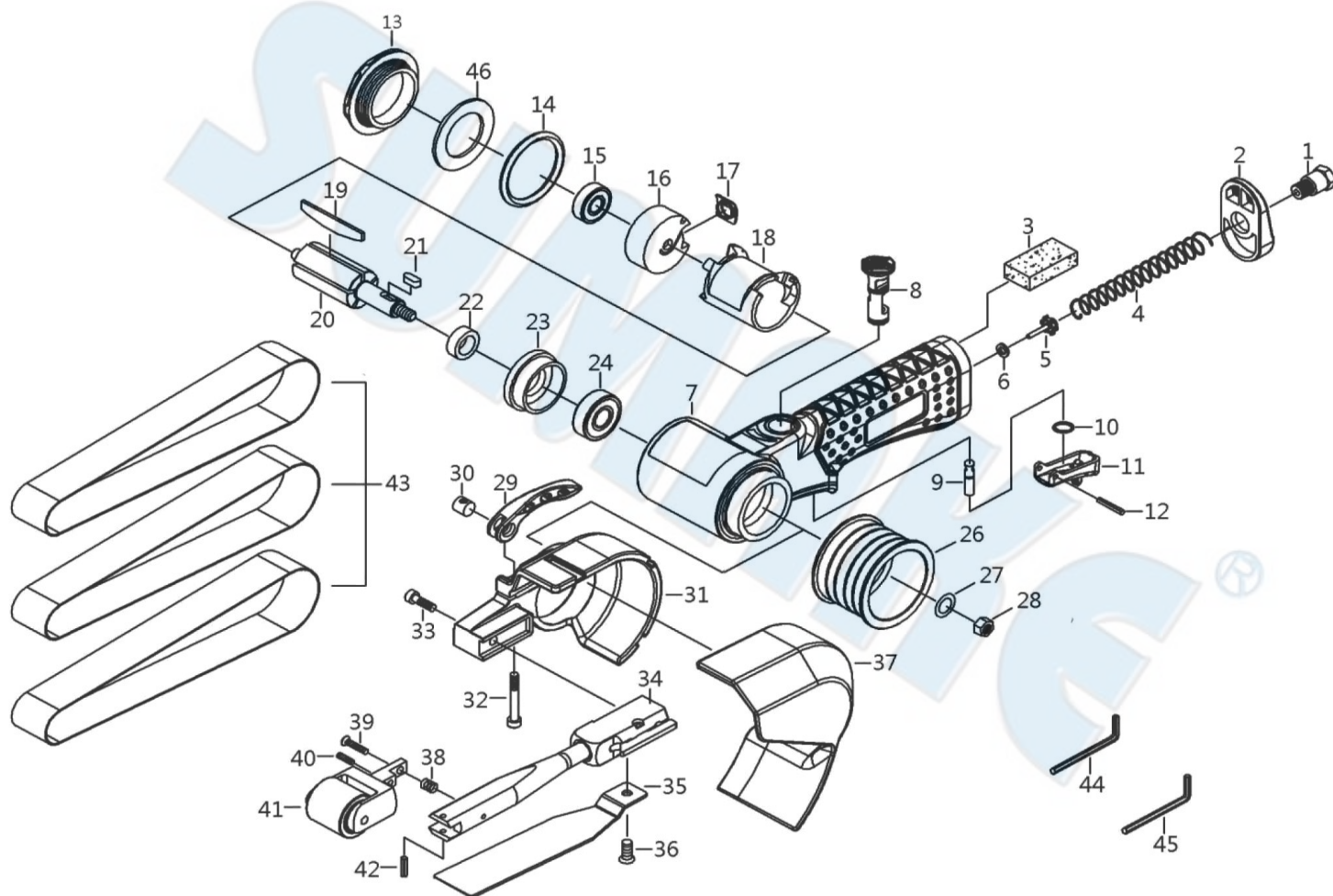
- Do not lay down the device before all the rotary parts stopped
- Do not keep the air tool running while carrying it.
- Maintain a firm grip on the power tool and position your body and arm to allow you to resist kickback forces. Always use auxiliary handle, if provided, for maximum control over kickback or torque reaction during start-up. The operator can control torque reactions or kickback forces, if proper precautions are taken
- Never place your hand near the rotating accessory. Accessory may kickback over your hand.
- Switch off the unit immediately in case of blocking or twist. Disconnect the air supply and do not switch on again until the problem is solved. Understand the reason why the tool has been blocked and make sure that this situation will not occur once more by counteract.
- Make sure that the accessory you intend to use has no damage. Exchange the part if you are not sure.
- In case the air tool gives a strong vibration, replace the accessory / abrading medium, probably it's damaged or worn out..
- Remember that a cracked sanding belt will cause serious hurts.



Common Troubleshooting:

Event	Appearance	Possible Cause	Solution
Not operating	Air is coming from the exhaust valve	Blades broken or worn out	Replace blades
		Ball bearing damaged	Replace ball bearing
		Rusty motor or clogged with objects	Disassemble and repair
	No air coming from the exhaust valve	Regulator is set at OFF	Adjust regulator
		No air flow	Check air system and connections
Low efficiency	Low revolution rate	Valve set damaged or broken	Disassemble and repair
		Not enough air pressure	Check air pressure
	Motor running abnormal or unusual noises occur	Forwarder/reverse valve is not set properly	Adjust forwarder/reverse valve
		Not enough lubrication, ball bearing, upper/lower end plate, cylinder, rotor, blade damaged	Lubricate or replace parts
Motor keeps running	Trigger does not bounce back or does not bounce back correctly	Trigger set has other objects stuck on it or the spring is broken, deformed or rusty	Disassemble and repair
	Trigger function normally	Trigger O-ring worn out or valve set damaged or broken	Disassemble, repair and replace parts

ST-BS510H AIR BELT SANDER (30x540mm)



PARTS LIST

No.	Parts No.	Description	Q'ty
1	BS510G-01	Air Inlet	1
2	BS510G-02	Exhaust Sleeve	1
3	BS510G-03	Silencer (60L)	1
4	BS510G-04	Spring	1
5	BS510G-05	Valve	1
6	BS510G-06	Washer	1
7	BS510G-07	Housing	1
8	BS510G-08	Regulator Set	1
9	BS510G-09	Valve Stem Set	1
10	BS510G-10	Snap Ring (STW-9)	1
11	BS510G-11	Lever	1
12	BS510G-12	Spring Pin (3x24L)	1
13	BS510G-13	Cap	1
14	BS510G-14	O-Ring (AS029)	1
15	BS510G-15	Bearing (626ZZ)	1
16	BS510G-16	Rear Plate	1
17	BS510G-17	Packing	1
18	BS510G-18	Cylinder Set	1
19	BS510G-19	Rotor Blade	6
20	BS510G-20	Rotor	1
21	BS510G-21	Key	1
22	BS510G-22	Bearing Spacer	1
23	BS510G-23	Front Plate	1
24	BS510G-24	Bearing (6000ZZ)	1

26	BS510H-26	Drive Pulley	1
27	BS510G-27	Washer (8.4x15.5x1.6T)	1
28	BS510G-28	Nut (M8x1P)	1
29	BS510G-29	Trigger	1
30	BS510G-30	Bushing	1
31	BS510G-31	Guard Hub	1
32	BS510G-32	Screw (M4x27L)	1
33	BS510G-33	Screw (M5x0.8Px16L)	1
34	BS510H-34	Tension Bar Set	1
35	BS510H-35	Shoe	1
36	BS510G-36	Screw (M5x0.8Px6L)	1
37	BS510G-37	Shroud	1
38	BS510G-38	Spring	1
39	BS510G-39	Screw (M3x15L)	1
40	BS510G-40	Screw (M4x10L)	1
41	BS510H-41	Idle Pulley Set	1
42	BS510G-42	Spring Pin (2.5x10L)	1
43	BS510H-43A	Sanding Belt (40#)	1
	BS510H-43B	Sanding Belt (60#)	1
	BS510H-43C	Sanding Belt (80#)	1
44	BS510G-44	Hex (2mm)	1
45	BS510G-45	Hex (3mm)	1
46	BS510G-46	Washer (22x32.3x1.5T)	1