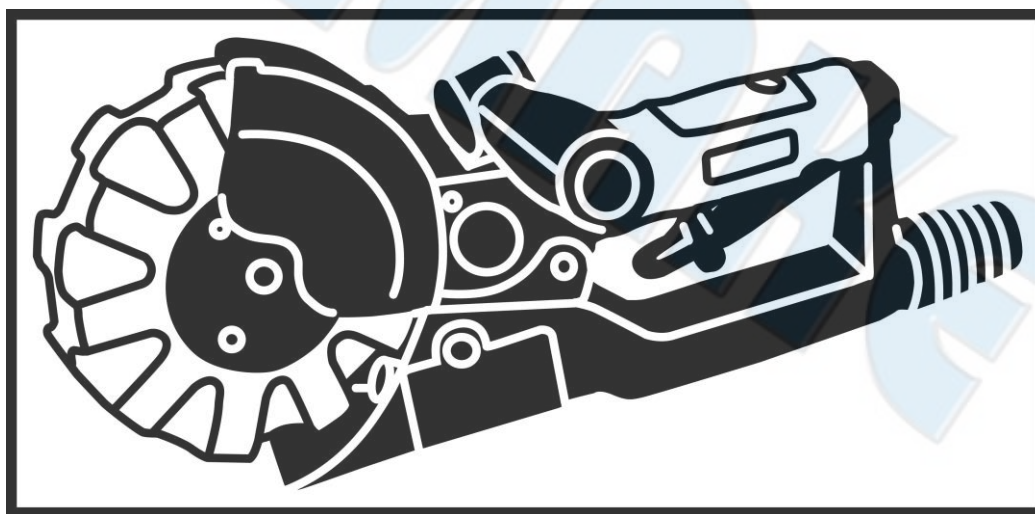




SUMAKE *PNEUMATIC TOOLS*



Central-Vacuum Remove-Pro Tool (Low Noise) ST-66342DS

Specification:

Free Speed	3950 r/min
Air Consumption	10 CFM (283 L/min)
Overall Length	13-3/4" (350 mm)
Air Inlet (PT)	1/4" (6.35 mm)
Air Hose (I.D.)	3/8" (10 mm)
Air Pressure	90 psi (6.3 bar)
Net Weight	2.91 lbs (1.32 kg)

Noise and Vibration:

Vibration EN ISO 28927-3	Noise EN ISO 15744	Remark
Load: 0.4 m/s ² Uncertainty K= 1.5 m/s ²	Sound Pressure Level load: 79 dB(A)	Please always wear ear protector at environment noise level > 80 dB(A) due to risk of impaired hearing!
	Sound power level load: 90 dB(A)	
	Uncertainty K= 3dB	

SUMAKE INDUSTRIAL CO., LTD

4F,NO.351,Yanguang St.,Neihu District TAIPEI, TAIWAN, ZIP:114-91

ST-66342DS-S-2006A-STF



EC DECLARATION OF CONFORMITY

We: **SUMAKE INDUSTRIAL CO., LTD.**

4F, No. 351, Yangguang St., Neihu District, Taipei City, Taiwan

declare in sole responsibility that the equipment

Equipment : **CENTRAL-VACUUM REMOVE-PRO TOOL (LOW NOISE)**

Model/ Serial No. : **ST-66342DS**

to which this declaration applies, complies with these normative documents:

- Machinery Directive: 2006/42/EC

and conforms to the following EN standard,

- EN ISO 12100: 2010
- EN ISO 11148-8:2011

Name and Signature/Position

Mike Su – Managing Director

Date and Place

2024/12/9

Taipei, Taiwan

ST-66342DS-D-2503B-STF

Application:

It is useful for various sanding work, to smooth wood and automotive or wood finishes by abrasion with sandpaper. (Easerr)

Pad mounting dangers:

- Correct sanding pad mounting is necessary to prevent injury from loosen wheels.
- Do not use chipped or cracked sanding pad.
- Use only wheels fitting the machine easily. If you need more force than usual to screw on the thread lead from the pad could be differ from the unit.
- Before sanding, test wheel by briefly running tool at full throttle. Be sure to use a barrier (such as under a heavy working table) to stop any possible loosen wheel parts.
- A broken sanding wheel will cause serious hurts !
- Regularly check the speed of the device by a tachometer to make sure the speed has not been exceeded and is conform with the sanding wheels you use. The approvable speed is mentioned down on the sanding wheel or on the data sheet which comes with them.
- Never use a sanding wheel marked with a speed lower than this tool!
- Do not wear jeweled or loose clothing and avoid long hair.
- Choking can happen if neckwear is not kept away from tool and accessories!
- Avoid direct contact with accessories during and after use. Safety gloves will reduce the risk of cuts or burns.
- Use only proper accessories retainers (refer to parts list).
- Use only sanding wheels with the correct shaft diameter, dimension and approvable speed according to the technical data of this tool.
- This unit has been developed as orbital sander and must only used for this function. Any misuse could occur serious health damage.

Dangers in use:

- Do not lay down the device before all the rotary parts stopped
- Do not keep the air tool running while carrying it.
- Maintain a firm grip on the power tool and position your body and arm to allow you to resist kickback forces. Always use auxiliary handle, if provided, for maximum control over kickback or torque reaction during start-up. The operator can control torque reactions or kickback forces, if proper precautions are taken
- Never place your hand near the rotating accessory. Accessory may kickback over your hand.
- Switch off the unit immediately in case of blocking or twist. Disconnect the air supply and do not switch on again until the problem is solved. Understand the reason why the tool has been blocked and make sure that this situation will not occur once more by counteract.
- Make sure that the accessory you intend to use has no damage. Exchange the part if you are not sure.
- In case the air tool gives a strong vibration, replace the accessory / abrading medium, probably it's damaged or worn out..
- Remember that a broken sanding wheel will cause serious hurts.



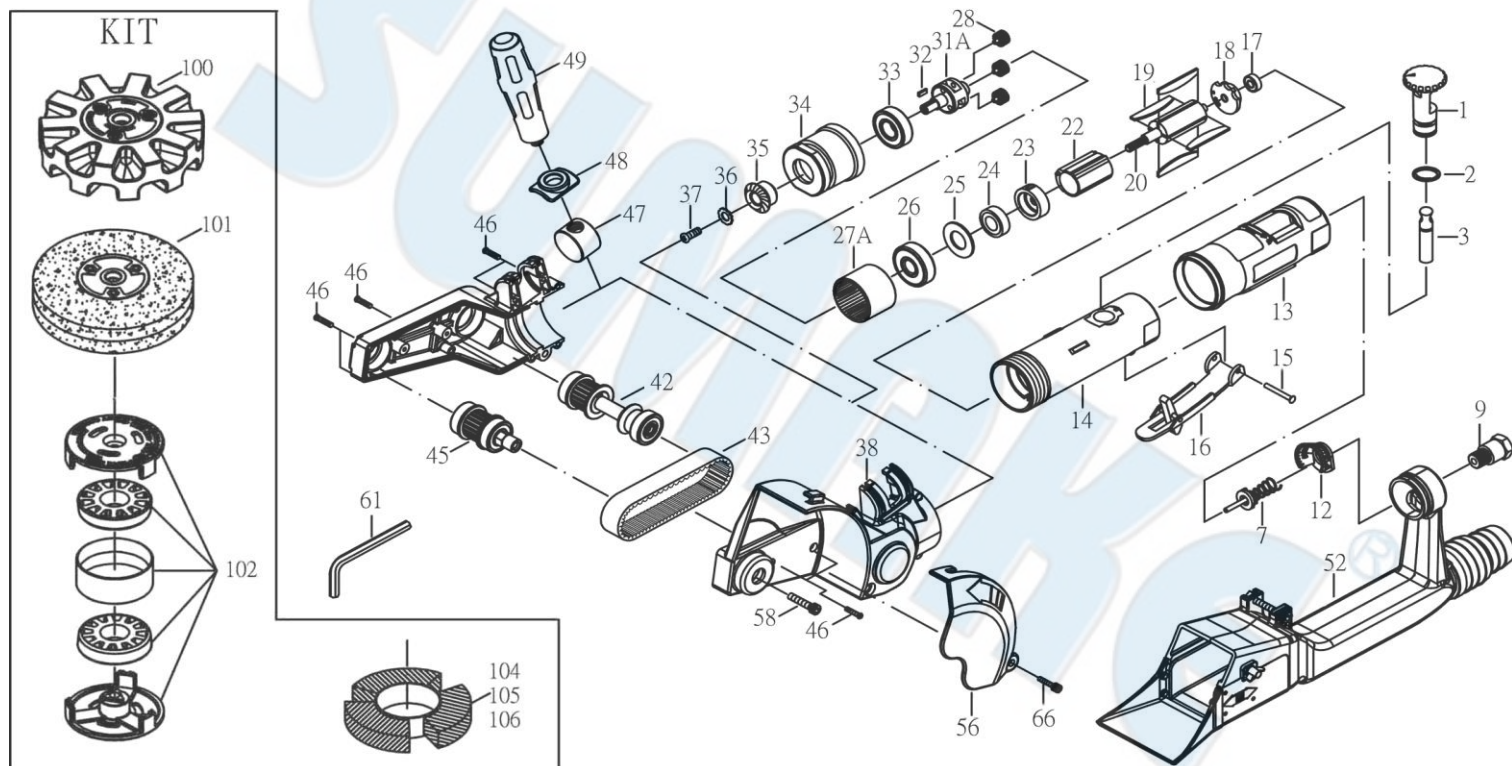
Trouble Shooting

ATTENTION: Please do not keep using if any of the following problems occur. For your own safety, please maintain or repair by a qualified person or an authorized service center only.

Event	Appearance	Possible Cause	Solution
Not operating	Air is coming from the air inlet	Blades broken or worn out	Replace blades
		Ball bearing damaged	Replace ball bearing
		Rusty motor or clogged with objects	Disassemble and repair
	No air coming from the air inlet	Regulator is not open	Adjust regulator
		No air flow	Check air system and connections
		Valve set damaged or broken	Disassemble and repair
Low efficiency	Low revolution rate	Not enough air pressure	Check air pressure
		Regulator valve is not set properly	Adjust regulator valve
Motor keeps running	Motor running abnormal or unusual noises occur	Not enough lubrication, ball bearing, front or end plate, cylinder, rotor, blade damaged	Lubricate or replace parts
	Trigger does not bounce back or does not bounce back correctly	Trigger set has other objects stuck on it or the spring is broken, deformed or rusty	Disassemble and repair
Wrong size of stone or collet	Grinding stone can't be used	Trigger worn out or valve set damaged or broken	Disassemble, repair and replace parts
		Wrong size for spindle of stone or collet of tool	Chang spindle of stone or collet.

ST-66342DS

CENTRAL-VACUUM REMOVE-PRO TOOL (LOW NOISE)



PARTS LIST

No.	Parts No.	Description	Q'ty
1	66342DS-01	Regulator Set	1
2	66342DS-02	Snap Ring	1
3	66342DS-03	Valve Stem Set	1
7	66342DS-07	Valve Stem	1
9	66342-09A	Air Inlet (NPT18)	1
	66342-09	Air Inlet (PT19)	1
12	66342DS-12	Cone Muffler	1
13	66342DS-13	Protecting Rubber	1
14	66342DS-14	Housing	1
15	66342DS-15	Spring Pin	1
16	66342-16	Lever	1
17	66342-17	Bearing (696ZZ)	1
18	66342-18	Rear Plate	1
19	66342-19	Rotor Blade	4
20	66342-20	Rotor (9T)	1
22	66342DS-22	Cylinder	1
23	66342-23	Front Plate	1
23	66342-23	Front Plate	1
24	66342-24	Bearing (608ZZ)	1
25	66342-25	Washer	1
26	66342-26	Bearing (6001Z)	1
27A	66342-27A	Thread Ring Gear	1
28	66342DS-28	Idler Gear Set (16T)	3
31A	66342-31A	Gear Plate	1
32	66342-32	Sliding Key	1
33	66342-33	Bearing (6200ZZ)	1
34	66342-34	Clamp Nut	1

No.	Parts No.	Description	Q'ty
35	66342-35	Bevel Gear	1
36	66342-36	Washer	1
37	66342-37	Screw	1
38	66342-38	Plastic Housing	1
42	66342DS-42	Belt Drive Shaft Set	1
43	66342-43	Toothed Belt	1
45	66342DS-45A	Belt Drive Shaft Set (1/4") For PT19	1
	66342DS-45B	Belt Drive Shaft Set (M6) For NPT18	1
46	66342-46	Screw (3x18L)	11
47	66342DS-47	Nut Set	1
48	66342-48	Handle Ring	1
49	66342-49	Handle (12.5L)	1
52	66342DS-52	Vacuum Adapter Ass'y	1
56	66342-56	Cover	1
58	66342-58	Screw (1/4"x28UNFx7/8")	1
	66342-58A	Screw (M6x25L)	1
61	66342-61	Hex (3/16")	1
	66342-61A	Hex (5mm)	1
66	66342-66	Screw	1
100	66342-100	Rubber Eraser W/Black Adaptor	1
101	66342-101	Stripping Wheel W/Black Adaptor (Opt.)	1
102	66342-102	Alum. Eraser Adaptor (Opt.)	1
104	66342-104	0.5mm Straight Wire Wheel -Steel Material (Opt.)	1
105	66342-105	0.5mm Bend Wire Wheel -Steel Material (Opt.)	1
106	66342-106	0.7mm Bend Wire Wheel -Steel Material (Opt.)	1



Read all these safety instructions before operating this product and save these instructions.

The tool has been manufactured in conformity with the instruction of EU machine directive. The EU mark will be considered void in the event of inexpert repairs, the use of non-original parts and in case of non-observance of the safety instructions in the user's manual.

Possible direct or indirect consequential damages are not the responsibility of SUMAKE Industrial co., Ltd.

General safety rules:

1. Watch the tool at all times when in use.
2. People under the influence of alcohol or drugs are not allowed to use, repair or maintain the tool.
3. Keep unqualified persons, children, etc. away from the tool.
4. Keep work area clean and with sufficient daylight or artificial lighting. The work area on which the machine is used must be cleaned up. Disorder is a potential cause of accidents.
5. Danger of explosion. Never use oxygen and combustible gas as an air supply for the tool which may be ignited by spark and cause fire or explosion.
6. Never use gasoline or other flammable liquids to clean the tool.
7. Do not use air tools in potentially explosive atmospheres such as in the presence of flammable liquids, cleaning solvents, fluid energy or stored gases.
8. Do not expose air tools to rain. Do not use air tools in damp or wet locations.
9. When a fault or failure is detected, the tool must immediately be disconnected from the air supply and returned for repair.
10. It is not permitted to modify the tool in any way.
11. When not in use, keep tools in a dry place, either locked up or in a high place, out of the reach of children.
12. Do not force small air tools to do the job of a heavy-duty task. Do not use air tool for purpose of which was not intended.
13. Wear suitable ear protection at environment noise level >80dB(A) and safety spectacles when using the tool. Always wear approved safety goggles if work in dusty. This also applies to other persons in the nearby vicinity.
14. Do not wear loose clothing or jewelry. They can be caught in moving parts. Rubber gloves and non-skid foot wear are recommended when working outdoors. Wear protective hair covering to contain long hair.
15. Keep proper footing and balance at all times.
16. Use clamps or a vice to hold work-piece. It is safer than using your hand and free both hands to operate the air tool.
17. When not use, before performing service or changing accessories, please disconnect tool from air compressor.
18. Do not carry plugged in air tool with your finger on the switch trigger. Be sure switch is in the "OFF" position when connecting to air supply.
19. Watch what you are doing. Use common sense, even unsafe situation or unbalanced positions, particularly when you are tired.
20. Air powered tools can vibrate in use. Vibration, repetitive motions or uncomfortable positions may be harmful to your hands or arms. Stop using any tool if discomfort, tingling feeling or pain occurs. Seek medical advice before resuming use.
21. Multiple hazards. Read and understand the safety instructions before installing, operating, repairing, maintaining, changing accessories on, or working near the power tool. Failure to do so can result in serious bodily injury.
22. Only qualified and trained operators should install, adjust or use the tool.
23. Do not modify this tool. Modifications may reduce the effectiveness of safety measures and increase the risks to the operator.
24. Do not discard the safety instructions – give them to the operator.
25. Do not use the power tool if it has been damaged.
26. Tools shall be inspected periodically to verify the ratings and markings required by this document are legibly marked on the tool. The employer/user shall contact the manufacturer to obtain replacement marking labels when necessary.
27. Only permitted insert tools of the correct shaft diameter are used.
28. Cutting-off wheels and routing cutter wheels shall not be used.
29. Allowed speed of the erasing part shall be higher than the speed of the tool.
30. Working in certain materials creates emission of dust and fumes, causing a potentially explosive environment.
31. Excessive vibration levels may due to improper mounting or damaged the tool.
32. Attention shall be paid so that maximum permissible pressure is not exceeded. Preferably a pressure regulator can be used to control the pressure of the air being supplied to the tool.
33. There is a running on of the rotary part after the start and stop device has been released.
34. There is risk of drawing in of long hair, loose clothing.
35. There is risk that stored gas or fluid energy may cause.
36. There is risk of a whipping compressed air hose.

Safety precautions for projectile hazards

1. Failure of the work piece, or accessories may generate high velocity projectiles.
2. Always wear impact-resistant eye protection during operation of the tool. The grade of protection required should be assessed for each use.
3. Ensure that the work piece is securely fixed.

Safety precautions for entanglement hazards

1. Entanglement hazard – choking, scalping and/or lacerations can occur if loose clothing, personal jewellery, neck ware, hair or gloves are not kept away from tool and accessories.

Safety precautions for operating hazards

1. Use of the tool may expose the operator's hands to hazards including crushing, impacts, cuts and abrasions and heat. Wear suitable gloves to protect hands.
2. Operators and maintenance personnel must be physically able to handle the bulk, weight and power of the tool.
3. Hold the tool correctly: be ready to counteract normal or sudden movements – have both hands available.
4. Maintain a balanced body position and secure footing.

5. Release the start and stop device in the case of an interruption of the energy supply.
6. Use only lubricants recommended by the manufacturer.
7. Personal protective safety glasses shall be used, suitable gloves and protective clothing are recommended
8. A rotary eraser shall not be operated at a speed exceeding the rated speed.
9. The maximum operating speed recommended by the tool manufacturer shall equal or exceed the rated speed marked on the tool.

Safety precautions for repetitive motions hazards

1. When using a power tool, the operator may experience discomfort in the hands, arms, shoulders, neck, or other parts of the body.
2. While using the tool, the operator should adopt a comfortable posture. Maintain secure footing and avoid awkward or off-balanced postures. The operator should change the posture during extended tasks which may help avoid discomfort and fatigue.
3. If the operator experience symptoms such as persistent or recurring discomfort, pain, throbbing, aching, tingling, numbness, burning sensation or stiffness, these warning signs should not be ignored. The operator should tell the employer and consult a qualified health professional.

Safety precautions for accessory hazards

1. Disconnect the tool from energy supply before changing the erasing part or accessory.
2. Only use sizes and types of accessories and consumables that are recommended by the tool manufacturer.
3. Avoid direct contact with the erasing part during and after use as it can be hot.

Safety precautions for workplace hazards

1. Slips, trips and falls are major causes of workplace injury. Be aware of slippery surfaces caused by use of the tool and also of trip hazards caused by the air line or hydraulic hose.
2. Proceed with care in unfamiliar surroundings. Hidden hazards may exist, such as electricity or other utility lines.
3. This tool is not intended for use in potentially explosive atmospheres and is not insulated from coming into contact with electric power.
4. Make sure there are no electrical cables, gas pipes etc. that could cause a hazard if damaged by use of the tool.

Safety precautions for dust and fume hazards

1. Dusts and fumes generated when using the tool can cause ill health (for example: cancer, birth defects, asthma and/or dermatitis); risk assessment of these hazards and implementation of appropriate controls of is essential.
2. Risk assessment should include dust created by the use of the tool and the potential for disturbing existing dust.
3. Operate and maintain the tool as recommended in these instructions, to minimise dust or fume emissions.
4. Direct the exhaust so as to minimise disturbance of dust in a dust filled environment
5. Where dusts or fumes are created, the priority shall be to control them at the point of emission.
6. All integral features or accessories for the collection, extraction or suppression of airborne dust or fumes should be correctly used and maintained in accordance with the manufacturer's instructions.
7. Select, maintain and replace the consumable/inserted tool as recommended in these instructions, to prevent an unnecessary increase in dust or fumes.
8. Use respiratory protection as instructed by your employer or as required by occupational health and safety regulations.

Safety precautions for noise hazards

1. Unprotected exposure to high noise levels can cause permanent, disabling, hearing loss and other problems such as tinnitus (ringing, buzzing, whistling or humming in the ears).
2. Risk assessment of these hazards and implementation of appropriate controls of is essential.
3. Appropriate controls to reduce the risk may include actions such as damping materials to prevent work pieces from 'ringing'.
4. Use hearing protection as instructed by your employer or as required by occupational health and safety regulations.
5. Operate and maintain the power tool as recommended in these instructions, to prevent an unnecessary increase in noise.
6. If the tool has a silencer, always ensure it is in place and in good working order when the tool is operating.
7. Select, maintain and replace the consumable/inserted tool as recommended in these instructions, to prevent an unnecessary increase in noise.

Safety precautions for vibration hazards

1. Exposure to vibration can cause disabling damage to the nerves and blood supply of the hands and arms.
2. Wear warm clothing when working in cold conditions and keep your hands warm and dry.
3. If you experience numbness, tingling, pain or whitening of the skin in your fingers or hands, stop using the assembly power tool for non-threaded mechanical fasteners, tell your employer and consult a physician.
4. Operate and maintain the die grinder as recommended in these instructions, to prevent an unnecessary increase in vibration levels.
5. Select, maintain and replace the consumable/inserted tool as recommended in these instructions, to prevent an unnecessary increase in vibration levels.
6. Support the weight of the tool in a stand, tensioner or balancer if possible.
7. Hold the tool with a light, but safe, grip because the risk from vibration is generally greater when the grip force is higher.

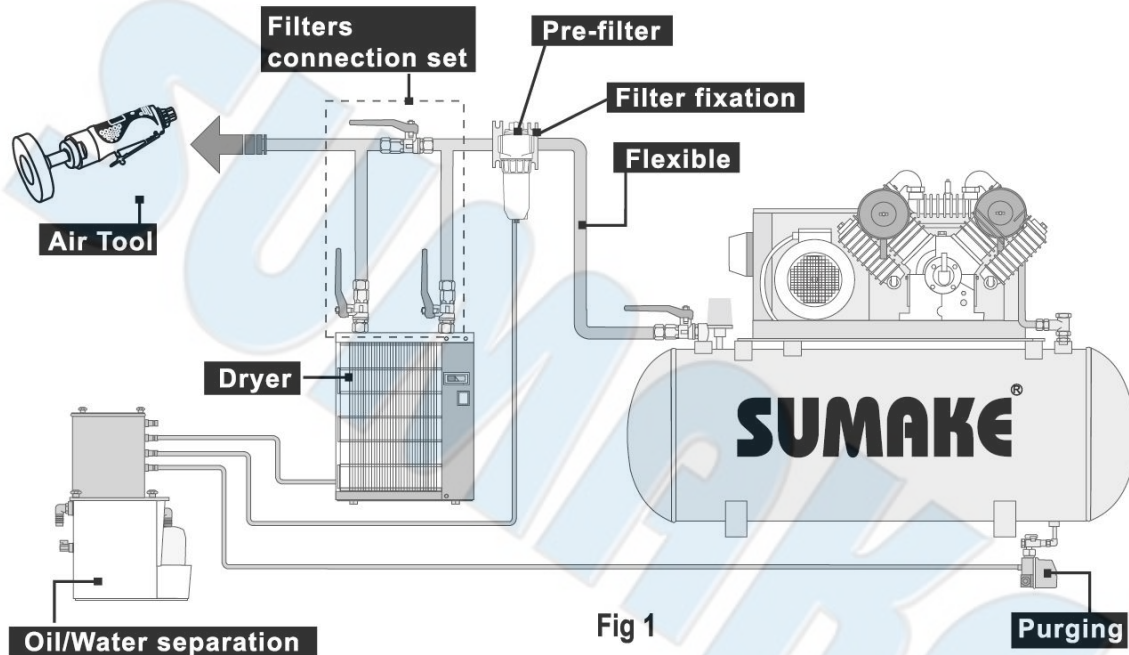
Additional safety instructions for pneumatic power tools

1. Air under pressure can cause severe injury.
2. Always shut off air supply, drain hose of air pressure and disconnect tool from air supply when not in use, before changing accessories or when making repairs.
3. Never direct air at yourself or anyone else.
4. Whipping hoses can cause severe injury. Always check for damaged or loose hoses and fittings.
5. Whenever universal twist couplings (claw couplings) are used, lock pins shall be installed and whipcheck safety cables shall be used to safeguard against possible hose-to-tool and hose-and-hose connection failure.
6. Do not exceed the maximum air pressure stated on the tool.
7. Never carry an air tool by the hose.

Specific safety instructions

Warnings shall be given about any specific or unusual hazards associated with the use of the power tool. Such warnings shall indicate the nature of the hazard, the risk of injury and the avoidance action to take.

General preparation and connection:



1. Before connecting the air hose, apply 4 to 5 drops of SAE#10-20 spindle oil at the air inlet. Also, every 3 to 4 hours of operation, oiling is necessary. Twist Teflon thread tape to ensure a proper seal air inlet. Then tighten the air coupler into air tool.
2. The supplied compressed air must be clean and dry, with the appropriate oil mist. Use an air treatment unit; filter, regulator and lubricator.
3. Please refer Fig.1 illustration shows the correct mode of connection to the air supply system which will increase the efficiency and useful life of the tool.
4. The quick connect coupling and hose must have sufficient air flow capacity. We recommend an air hose with a diameter of 10mm (3/8").
5. To ensure a good performance. The operation pressure at the compressed air inlet should not exceed 6.3bar (90psi) (unless indicated otherwise). Higher operating pressures may cause damaged or excessive wear. Operating pressures below 5.3bar may cause pressure or power loss.



Risk of injury

1. Compressed air can inflict serious injuries. Therefore never point the air hose at another person or yourself.
2. Shut – off the air supply and disconnect the tool in case:
 - You want to change or replace accessories.
 - You want to clean, repair or maintain the tool.
 - The tool is not going to use for some times.
3. Check compressed air hose before use. If it is damaged, broken, torn, or deformed, the hose is not to be connected to the tool.
4. Always check the pneumatic couplings before using the tool. If they show signs of damage, fracture, cracking or excessive corrosion, the respective tool or the air hose is not to be used.
5. Use only qualified adapters and connectors, In case of wear they are to be replaced immediately.
6. Only use air pipes that are fit for the use at maximum pressure.

Maintenance instruction:

1. Dry the filter (fig1) and the air inlet of the tool.
2. Lubricate the quick connect coupling to prevent blocking.
3. Air tool require lubrication throughout the life of the tool. The air motor and bearing uses compressed air to start the tool. The moisture in compressed air will rust the air motor; you must lubricate the motor daily.
4. Avoid storing the tool in a location subject to high humidity. If the tool is left as it is used, the residual moisture inside the tool can cause rust.
5. Before storage, lubricate tool and run it for a few seconds.
6. Regular inspection of spindles, threads, and clamping devices in respect of wear and tolerances for location of abrasive products.
7. If the tool is too seriously damage to be used anymore, recycle raw material instead of disposing as waste. The machine, accessories and packaging should be sorted for environmental-friendly recycling. Check with your local authority or retailer for recycling advice.

