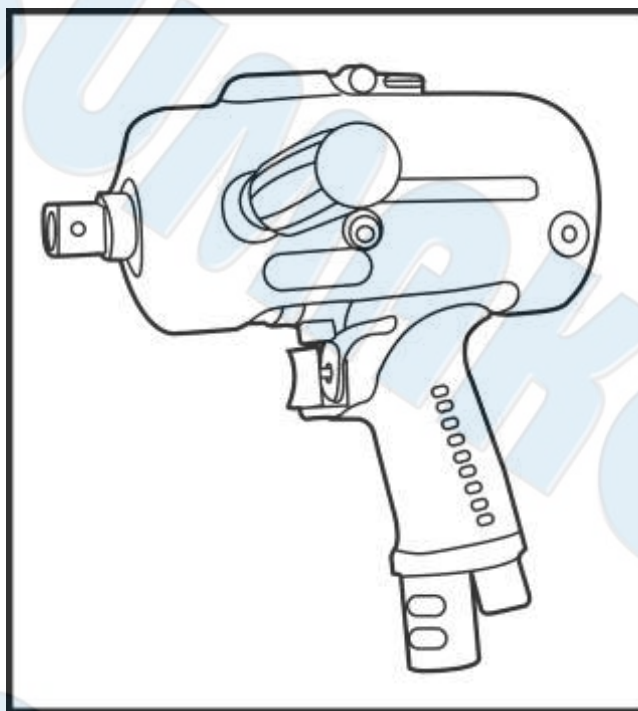




SUMAKE PNEUMATIC TOOLS



3/4" Square Drive Auto Shut Off Oil Pulse Wrench (Pistol Type) -High Pressure Tool IPW-26450P

Specification:

Free Speed	3,200 r/min
Square	3/4
Bolt Capacity	16~20 mm
Torque	225~450Nm (166.5~333ft-lb)
Overall Length	8-5/7" (221mm)
Air Consumption	24.7 CFM (700 L/min)
Air Inlet (PT)	3/8" (10 mm)
Air Hose (I.D.)	13 mm
Air Pressure	72.5~87 psi (5~6 bar)
Net Weight	9.26lbs (4.2kgs)

Noise and Vibration:

Vibration EN ISO 28927-2	Noise EN ISO 15744	Remark
Load: 3.3 m/s ² Uncertainty K= 1.5 m/s ²	Sound Pressure Level load: 85 dB(A)	Please always wear ear protector at environment noise level > 80 dB(A) due to risk of impaired hearing!
	Sound power level load: 86 dB(A)	
	Uncertainty K= 3dB	

SUMAKE INDUSTRIAL CO., LTD

4F,NO.351,Yangguang St.,Neihu District TAIPEI, TAIWAN, ZIP:114-91

IPW-26450P-S-2307B-C5F

SUMAKE®

OIL PULSE TOOL



IPS(W)-I-1709D-C5

OIL PULSE TOOL & TORQUE MEASUREMENT EQUIPMENT



WARNING

Read and carefully observe these operating instructions before unpacking and operating the tool! The tool must be operated, maintained and repaired exclusively by persons familiar with the operating instructions. Local safety regulations regarding installation and maintenance must be followed.



INSTALLING TOOL

- For safety, performance and durability of parts, operate this tool at 90psi (6.3kg/cm²) maximum air pre-sure at inlet with 3/8" (10mm) inside diameter air supply hose.
- For safety reasons, the tool must always be disconnected from the air supply during connection and adjustment work.
- Do not use damaged, frayed air hoses and fittings.
- Before sure all hoses and fitting are the correct size and are tightly secured.
- Always use clean, dry air at 90psi (6.3kg/cm²) maximum air pressure. moisture can ruin the motor of an air tool.
- Do not lubricate tools with flammable or volatile liquids such as kerosene, diesel or jet fuel.
- Do not remove any labels, replace Any damaged label.

USING THE TOOL

- Never work without protective goggles
- Always wear hearing protection when operating this tool.
- Be aware of the direction of rotation when operating the throttle.
- Keep hands, loose clothing and long hair away from rotating end of tool.
- Keep body stay balanced and firm. Do not over reach when operating this tool. High reaction torque can be occur at or below the recommended air pressure.
- Use power sockets only, For safe and economic use-replace worn sockets.
- This tool, together with any attachments and accessories, must never be used for anything other than the designed purpose.

SYMBOLS

	Caution				
This symbol identifies the potential for a hazardous situation. If this warning is not followed, a serious injury could occur.	This symbol identifies the potential for a damaging situation. If a caution note is not followed, the product or parts of the product could be damaged	Avoid direct skin contact when working with oil to prevent skin irritations	Always wear eye protection when operating or performing maintenance on this tool	Always wear hearing protection when operating this tool.	Recycling raw materials instead of disposing as waste.

OIL PULSE TOOL & TORQUE MEASUREMENT EQUIPMENT

NOTICE

The use of other than genuine replacement parts may result in safety hazards, decreased tool performance, and increased maintenance, and may invalidate all warranties.

Repairs should be made only by authorized trained personnel.

For parts and service information, contact your local distributors.

PRODUCT DESCRIPTION

The pulse tool is a similar design to impact wrench, however with a integrated hydraulic oil pressure unit. Combination of torque control, forward/reverse operation. Low noise and low vibration.

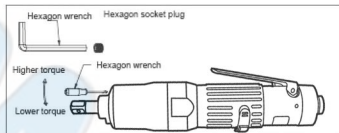
TORQUE ADJUSTMENT

To adjust the torque on oil pulse tool, proceed as follows :

1. The cold weather could influence pulse oil quality. please reheat fastener 10-15times to warm up the oil then adjust torque screw.
2. Remove the adjustment hole plug.
3. Rotate the drive shaft until the torque adjustment screw is visible in the opening.
4. Use a hex wrench, rotate the adjustment crew clockwise to increase the torque output and counterclockwise to decrease the torque output. Do not rotate the oil plug. (with about 3-4 turns, set the desired torque)

NOTICE

PLEASE USE TORQUE TESTER FOR CALIBRATION AFTER TORQUE ADJUSTMENT



OIL PULSE TOOL & TORQUE MEASUREMENT EQUIPMENT

COMPRESSED AIR SCHEMATIC



RECOMMENDED COMPRESSED AIR SYSTEM

Caution



Lubrication

While installing air compressor system, be sure to have filters, separators for oil and water, regulators, and lubricators to increase work efficiency, prolong the life of air tools and reduce maintenance cost.

Suggestion air hose size :

Main Line : 3 times air tool inlet size

Branch Line : 2 times air tool inlet size

To keep the best performance of tool, please install the air hose size correctly

NOTICE



3/8" I.D Hose

Ideal for increasing working distance in high CFM applications.

Q&A

Q : What is the air pressure and air hose size that I should use with pulse tool ?

A : The tools should be run at 90psi dynamic (This means that the air pressure should be checked with the tool running free speed) . The inside diameter of your air hose should be one size larger than the size of the air inlet of the tool.

Example : 1/4" NPT air inlet should be run on a 3/8" inside diameter air hose.

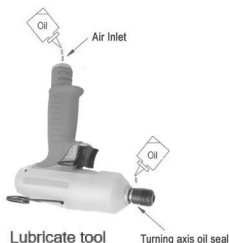
OIL PULSE TOOL & TORQUE MEASUREMENT EQUIPMENT

INSPECTION AND MAINTENANCE

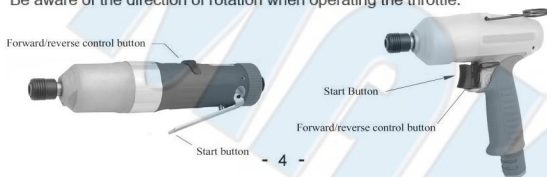
Placing tool in service :

1. Please install line with R.F.L unit (R-REGULATOR, F-Filter, L-Lubricator)
2. Air hose must be 3/8" inside diameter, don't use coil hose, it may affect torque stability.
3. Please check the air pressure before using. The air pressure should be 90psi in dynamic.
4. Ensure the air supply is clean and does not exceed 90psi during operation. Too high an air pressure and unclean air will shorten the product life due to excessive wear, and may be dangerous causing damage and/or personal injury.
5. Please check compressed air system everyday and keep it clean and dry.
6. Use proper connector, coupling, coupling, threaded connections and accessories.

Using tool in service :



1. Please lubricate tool daily to avoid wearing and rustiness. Running tool for 2-3 seconds after lubrication.
2. Always wear eye and ears protection when operating the tool
3. the bearing needs to be lubricated with LDS18 every 3 months.
4. Please follow the instruction for assembly or disassembly this tool
5. Please do not make any adjustment during operation. Please disconnect the air hose from air supply.
6. The use of other than genuine replacement parts may cause the damage of the tools.
7. Ues only impact socket and accessories. Do not use hand (chrome) sockets or accessories.
8. Be aware of the direction of rotation when operating the throttle.



OIL PULSE TOOL & TORQUE MEASUREMENT EQUIPMENT

FLUID CHANGE

In order to avoid the costs of malfunction or maintenance increase, routine inspections are necessary.

When tighten fasteners, used in different ways can cause the time of change oil difference, so we recommend that user should assess the self-condition to adjust the time of change oil.

For example: Tighten hard joint fasteners about spending 0.5~1 second (pulse), tighten soft joint fasteners exceeds more than 1 second (pulse), the time of change oil will be different.

Pulse number: It means when the screws are exposed to tighten the object surface, the number of strokes that driven by hydraulic cylinder.

When tool spends less time to tighten the object; quickly achieve the required torque, the time of change oil (number) will be extended.

When tool spends more time to tighten the object; to reach the required torque, the time of change oil (number) will be increased.

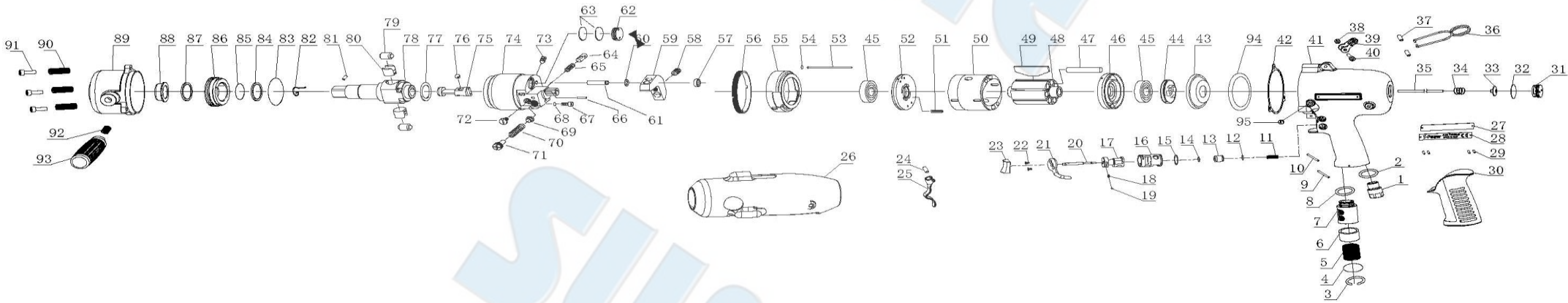
When tool is used for high torque (less number of pulses), the time of change oil will be extended.

When tool is used for low torque (more number of pulses), the time of change oil will be increased.

NOTICE

On the narrative, we reserve the right to change, without prior notice.

IPW-26450P
3/4" SQUARE DRIVE AUTO SHUT OFF OIL PULSE WRENCH (PISTOL TYPE) -HIGH PRESSURE TOOL



IPW-26450P

3/4" SQUARE DRIVE AUTO SHUT OFF OIL PULSE WRENCH (PISTOL TYPE) -HIGH PRESSURE TOOL

PARTS LIST

No.	Parts No.	Description	Q'ty
1	IP35970780030	Connect Set Fast-19npt	1
	IP35970770030	Connect Set Fast-18npt	1
2	IP40320009010	O-Ring	1
3	IP40900259030	Snap	1
4	IP35970840030	Exhaust Back Cover	1
5	IP35970810000	Exhaust Nets	1
6	IP35970820000	Muffler	2
7	IP35970790000	Exhaust Block Set	1
8	IP40320005010	O-Ring	1
9	IP41320280030	Pin	2
11	IP35720680030	Spring	1
12	IP40300119010	O-Ring	1
13	IP35720670000	Valve Cap Of The Switch	1
14	IP40310003010	O-Ring	1
15	IP40300108010	O-Ring	1
16	IP35970630030	Lever Bushing	1
17	IP35970620030	Reverse Valve	1
18	IP35600710000	Spring	1
19	IP40503000000	Ball	1
20	IP35970720030	Valve Rod	1
21	IP35720730030	R.L Lever	1
22	IP40103080030	Screw	2
23	IP35720690000	Throttle Grip	1
24	IP41230160030	Pin	1
25	IP35972570000	Throttle Gripa	1
26	IP35972500000	A Gun Shaped Body	1
27	IP35972420000	The Negative Plate	1
28	IP35242410000	The Positive Plate	1
29	IP42117001000	Rivet	4
30	IP35971810010	Rubber Grip	1
31	IP35970120030	Back Casing	1
32	IP40300113010	O-Ring	1
33	IP35973930000	Valve	1
34	IP35970930000	Spring	1
35	IP35972390000	Transmission Plate Piston Pole	1
36	IP35972370030	After The Rings	1
37	IP35972320030	Ring Sheath	2
38	IP42111001030	Screw Cap	1
39	IP31100440030	Suspension Loop	1
40	IP40104250030	Screw	1
41	IP35970180220	Pistol Housing	1
42	IP35971030000	Washer	1
43	IP35972740030	Inlet Washer	1
44	IP35971640030	Check Plate	1
45	IP40800063000	Bearing	2
46	IP35970500110	Front Plate	1
47	IP35971680000	Rubber Plug	7
48	IP35970560000	Rotor	1

No.	Parts No.	Description	Q'ty
49	IP35970490000	Rotor Blade	7
50	IP35970550110	Cylinder	1
51	IP42160009000	Key	1
52	IP35970430110	Rear Plate	1
53	IP35974000000	Pin	1
54	IP40300137010	O-Ring	1
55	IP35972760030	Spacer	1
56	IP35970390030	Connexion Sets	1
57	IP35972830000	Lock Ring	1
58	IP35972870030	Adjustment Screw	1
59	IP35972770030	Inertia Body	1
60	IP35972850000	Washer	1
61	IP35972780000	Pin	1
62	IP35972810000	Cover	1
63	IP35972800000	Diaphragm	2
64	IP35973690030	Stop Pin	1
65	IP35973680000	Spring	1
66	IP41320120000	Pin	1
67	IP35971210030	Oil Screw	1
68	IP40300022010	O-Ring	2
69	IP35972840000	Spring Guide	1
70	IP35972900000	Spring	1
71	IP35971220030	Adjust Screw	1
72	IP35972880030	Screw	1
73	IP35972860030	Screw	1
74	IP35970290000	Oil Hydraulic Cylinder	1
75	IP35971890000	Cam	1
76	IP40507000000	Ball	1
77	IP35974270000	Washer	1
78	IP35970310000	Main Shaft-D	1
79	IP35972790000	Roller	2
80	IP35970940000	Piston	2
81	IP31061150030	Pin	1
82	IP31061160030	Spring	1
83	IP40300138010	O-Ring	1
84	IP35691250000	Xo-Ring	1
85	IP35691260210	Xo-Washer	1
86	IP35970350030	Pressure Plate	1
87	IP31060360000	Washer	1
88	IP35970090000	Bushing	1
89	IP35970020220	Front Casing	1
90	IP41006020000	Thread Jacket	3
91	IP40106200031	Screw	3
92	IP41012175000	Thread Jacket	1
93	IP31100510000	Handle	1
94	IP40320016010	O-Ring	1
95	IP35972920030	Torque Screw Cap	1



EC DECLARATION OF CONFORMITY

We: **SUMAKE INDUSTRIAL CO., LTD.**

4F, No. 351, Yangguang St., Neihu District, Taipei City, Taiwan

declare in sole responsibility that the equipment

Equipment : **3/4" SQUARE DRIVE AUTO SHUT OFF OIL PULSE WRENCH
(PISTOL TYPE) -HIGH PRESSURE TOOL**

Model/ Serial No. : **IPW-26450P**

to which this declaration applies, complies with these normative documents:

- Machinery Directive: 2006/42/EC

and conforms to the following EN standard,

- EN ISO 12100: 2010
- EN ISO 11148-6:2012

Name and Signature/Position

Mike Su – Managing Director

Date and Place

2022/12/1

Taipei, Taiwan

IPW-26450P-D-2307B-C5F

NOTE

SUMAKE®

SUMAKE®