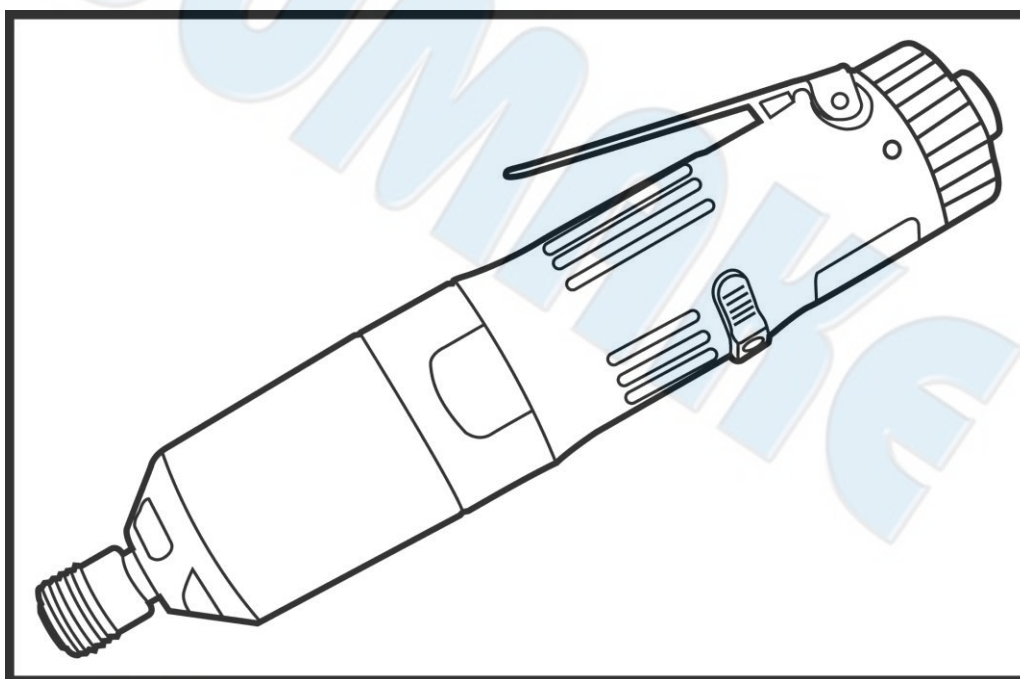




SUMAKE *PNEUMATIC TOOLS*



Non Shut Off Oil Pulse Screwdriver (Straight Type) IPS-2210N

Specification:

Free Speed	6,900 r/min
Square	1/4 Hex
Bolt Capacity	5 mm
Torque	8~12Nm (5.9~8.9ft-lb)
Overall Length	8-5/8" (219mm)
Air Consumption	7 CFM (200 L/min)
Air Inlet (PT)	1/4" (6.35 mm)
Air Hose (I.D.)	5.0 mm
Air Pressure	72.5~87 psi (5~6 bar)
Net Weight	1.58 lbs (0.72 kg)

Noise and Vibration:

Vibration EN ISO 28927-2	Noise EN ISO 15744	Remark
Load: 2.1 m/s ² Uncertainty K= 1.5 m/s ²	Sound Pressure Level load: 65 dB(A)	Please always wear ear protector at environment noise level > 80 dB(A) due to risk of impaired hearing!
	Sound power level load: 76 dB(A)	
	Uncertainty K= 3dB	

SUMAKE®

OIL PULSE TOOL



IPS(W)-I-1709D-C5

OIL PULSE TOOL & TORQUE MEASUREMENT EQUIPMENT



WARNING

Read and carefully observe these operating instructions before unpacking and operating the tool! The tool must be operated, maintained and repaired exclusively by persons familiar with the operating instructions. Local safety regulations regarding installation and maintenance must be followed.



INSTALLING TOOL

- For safety, performance and durability of parts, operate this tool at 90psi (6.3kg/cm²) maximum air pressure at inlet with 3/8" (10mm) inside diameter air supply hose.
- For safety reasons, the tool must always be disconnected from the air supply during connection and adjustment work.
- Do not use damaged, frayed air hoses and fittings.
- Before sure all hoses and fitting are the correct size and are tightly secured.
- Always use clean, dry air at 90psi (6.3kg/cm²) maximum air pressure. moisture can ruin the motor of an air tool.
- Do not lubricate tools with flammable or volatile liquids such as kerosene, diesel or jet fuel.
- Do not remove any labels, replace Any damaged label.

USING THE TOOL

- Never work without protective goggles
- Always wear hearing protection when operating this tool.
- Be aware of the direction of rotation when operating the throttle.
- Keep hands, loose clothing and long hair away from rotating end of tool.
- Keep body stay balanced and firm. Do not over reach when operating this tool. High reaction torque can be occur at or below the recommended air pressure.
- Use power sockets only, For safe and economic use-replace worn sockets.
- This tool, together with any attachments and accessories, must never be used for anything other than the designed purpose.

SYMBOLS

	Caution				
This symbol identifies the potential for a hazardous situation. If this warning is not followed, a serious injury could occur.	This symbol identifies the potential for a damaging situation. If a caution note is not followed, the product or parts of the product could be damaged	Avoid direct skin contact when working with oil to prevent skin irritations	Always wear eye protection when operating or performing maintenance on this tool	Always wear hearing protection when operating this tool.	Recycling raw materials instead of disposing as waste.

OIL PULSE TOOL & TORQUE MEASUREMENT EQUIPMENT

NOTICE

The use of other than genuine replacement parts may result in safety hazards, decreased tool performance, and increased maintenance, and may invalidate all warranties.

Repairs should be made only by authorized trained personnel.

For parts and service information, contact your local distributors.

PRODUCT DESCRIPTION

The pulse tool is a similar design to impact wrench, however with a integrated hydraulic oil pressure unit. Combination of torque control, forward/reverse operation. Low noise and low vibration.

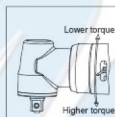
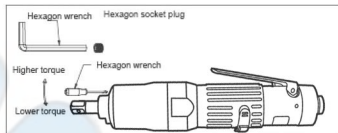
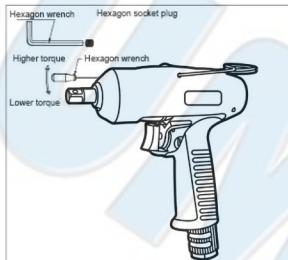
TORQUE ADJUSTMENT

To adjust the torque on oil pulse tool, proceed as follows :

1. The cold weather could influence pulse oil quality. please reheat fastener 10-15times to warm up the oil then adjust torque screw.
2. Remove the adjustment hole plug.
3. Rotate the drive shaft until the torque adjustment screw is visible in the opening.
4. Use a hex wrench, rotate the adjustment crew clockwise to increase the torque output and counterclockwise to decrease the torque output. Do not rotate the oil plug. (with about 3-4 turns, set the desired torque)

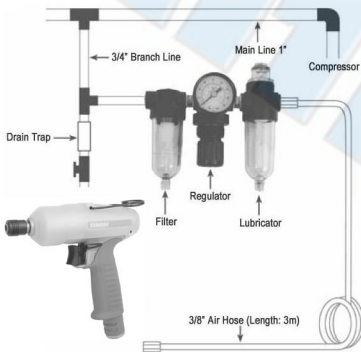
NOTICE

PLEASE USE TORQUE TESTER FOR CALIBRATION AFTER TORQUE ADJUSTMENT



OIL PULSE TOOL & TORQUE MEASUREMENT EQUIPMENT

COMPRESSED AIR SCHEMATIC



RECOMMENDED COMPRESSED AIR SYSTEM

Caution



Lubrication

While installing air compressor system, be sure to have filters, separators for oil and water, regulators, and lubricators to increase work efficiency, prolong the life of air tools and reduce maintenance cost.

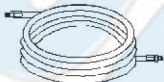
Suggestion air hose size :

Main Line : 3 times air tool inlet size

Branch Line : 2 times air tool inlet size

To keep the best performance of tool, please install the air hose size correctly

NOTICE



3/8" I.D Hose

Ideal for increasing working distance in high CFM applications.

Q&A

Q : What is the air pressure and air hose size that I should use with pulse tool ?

A : The tools should be run at 90psi dynamic (This means that the air pressure should be checked with the tool running free speed). The inside diameter of your air hose should be one size larger than the size of the air inlet of the tool.

Example : 1/4" NPT air inlet should be run on a 3/8" inside diameter air hose.

OIL PULSE TOOL & TORQUE MEASUREMENT EQUIPMENT

INSPECTION AND MAINTENANCE

Placing tool in service :

1. Please install line with R.F.L unit (R-REGULATOR, F-Filter, L-Lubricator)
2. Air hose must be 3/8" inside diameter, don't use coil hose, it may affect torque stability.
3. Please check the air pressure before using. The air pressure should be 90psi in dynamic.
4. Ensure the air supply is clean and does not exceed 90psi during operation. Too high an air pressure and unclean air will shorten the product life due to excessive wear, and may be dangerous causing damage and/or personal injury.
5. Please check compressed air system everyday and keep it clean and dry.
6. Use proper connector, coupling, coupling, threaded connections and accessories.

Using tool in service :



1. Please lubricate tool daily to avoid wearing and rustiness. Running tool for 2-3 seconds after lubrication.
2. Always wear eye and ears protection when operating the tool
3. the bearing needs to be lubricated with LDS18 every 3 months.
4. Please follow the instruction for assembly or disassembly this tool
5. Please do not make any adjustment during operation. Please disconnect the air hose from air supply.
6. The use of other than genuine replacement parts may cause the damage of the tools.
7. Ues only impact socket and accessories. Do not use hand (chrome) sockets or accessories.
8. Be aware of the direction of rotation when operating the throttle.

Forward/reverse control button



Start Button

Forward/reverse control button



OIL PULSE TOOL & TORQUE MEASUREMENT EQUIPMENT

FLUID CHANGE

In order to avoid the costs of malfunction or maintenance increase, routine inspections are necessary.

When tighten fasteners, used in different ways can cause the time of change oil difference, so we recommend that user should assess the self-condition to adjust the time of change oil.

For example: Tighten hard joint fasteners about spending 0.5~1 second (pulse), tighten soft joint fasteners exceeds more than 1 second (pulse), the time of change oil will be different.

Pulse number: It means when the screws are exposed to tighten the object surface, the number of strokes that driven by hydraulic cylinder.

When tool spends less time to tighten the object; quickly achieve the required torque, the time of change oil (number) will be extended.

When tool spends more time to tighten the object; to reach the required torque, the time of change oil (number) will be increased.

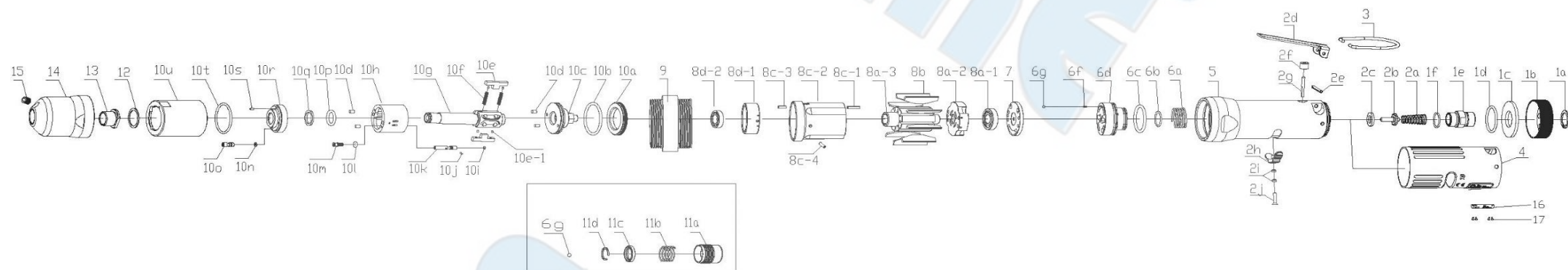
When tool is used for high torque (less number of pulses), the time of change oil will be extended.

When tool is used for low torque (more number of pulses), the time of change oil will be increased.

NOTICE

On the narrative, we reserve the right to change, without prior notice.

IPS-2210N NON SHUT OFF OIL PULSE SCREWDRIVER (STRAIGHT TYPE)



IPS-2210N NON SHUT OFF OIL PULSE SCREWDRIVER (STRAIGHT TYPE)

PARTS LIST

No.	Parts No.	Description	Q'ty
B	IP36050173000	Straight Housing	1set
1	IP30460792160	Exhaust Block Set	1set
1a	IP40900157032	Snap	1
1b	IP30460790160	Exhaust Block Set	1
1c	IP30460820000	Muffler	1
1d	IP40300038010	O-Ring	1
1e	IP30460770030	Connect Set Fast-18npt	1
	IP30460780030	Connect Set Fast-19npt	1
1f	IP40300001010	O-Ring	1
2	IP30460662000	Switch Place	1set
2a	IP30461190030	Spring	1
2b	IP30461200210	Air Inlet Valve	1
2c	IP30461270020	Washer	1
2d	IP30060510110	Handle	1
2e	IP41230250030	Pin	1
2f	IP30460660000	Switch Place	1
2g	IP30460650030	Valve Axle Of The Switch	1
2h	IP30460640010	R.L Switch	1
2i	IP30460740030	Washer	2
2j	IP30460750030	Screw	1
3	IP30460440030	Suspension Loop	1
4	IP36051830000	Rubber Grip	1
5	IP36050170000	Straight Housing	1
6	IP30460912000	Equilibrate The Switch	1set
6a	IP30460930000	Spring	1
6b	IP40320009010	O-Ring	1
6c	IP40330015010	O-Ring	1
6d	IP30460910000	Equilibrate The Switch	1
6f	IP30080710000	Spring	1
6g	IP40503000000	Ball	1
7	IP30460960230	Wind Direction Plate	1
8	IP30460552230	Cylinder	1set
8a	IP30460501230	Front Plate	1set
8a-1	IP40800006001	Bearing	1
8a-2	IP36050500230	Front Plate	1
8a-3	IP36000560000	Rotor	1
8b	IP30460490000	Rotor Blade	9
8c	IP30460551230	Cylinder	1set
8c-1	IP41220140030	Pin	1
8c-2	IP36050550230	Cylinder	1
8c-3	IP41215050030	Pin	1

No.	Parts No.	Description	Q'ty
8c-4	IP41220040030	Pin	1
8d	IP30460431230	Rear Plate	1set
8d-1	IP36050430230	Rear Plate	1
8d-2	IP40800030001	Bearing	1
9	IP30460390030	Connexion Sets	1
10	IP36050263030	Linnet Casing	1set
10a	IP30480350030	Pressure Plate	1
10b	IP40300048010	O-Ring	1
10c	IP30480340000	Transmission Plate	1
10d	IP41325045000	Pin	4
10e	IP36000320000	Drive Blade	2
10e-1	IP41215050030	Pin	4
10f	IP30460330000	Blade Spring	2
10g	IP30480300000	Main Shaft-H	1
10h	IP36000290000	Oil Hydraulic Cylinder	1
10i	IP40300037010	O-Ring	1
10j	IP41310032000	Pin	1
10k	IP36051080000	Control Core	1
10l	IP40300011010	O-Ring	1
10m	IP30491220030	Adjust Screw	1
10n	IP40300010010	O-Ring	1
10o	IP30481210030	Oil Screw	1
10p	IP30481250000	Xo-Ring	1
10q	IP30221260210	Xo-Washer	1
10r	IP36000280000	Liner Plate	1
10s	IP41320058000	Pin	1
10t	IP40330039010	O-Ring	1
10u	IP36050260030	Linnet Casing	1
11	IP30060412030	Sleeve	1set
11a	IP30060410030	Sleeve	1
11b	IP30060420030	Spring	1
11c	IP30060400030	Washer	1
11d	IP30061310000	Snap	1
6g	IP40503000000	Ball	1
12	IP30060360000	Washer	1
C	IP30480023190	Front Casing	1set
13	IP30070090000	Bushing	1
14	IP36000020220	Front Casing	1
15	IP40116280030	Screw	1
16	IP36052410000	The Positive Plate	1
17	IP42117003000	Rivet	4



EC DECLARATION OF CONFORMITY

We: **SUMAKE INDUSTRIAL CO., LTD.**

4F, No. 351, Yangguang St., Neihu District, Taipei City, Taiwan

declare in sole responsibility that the equipment

Equipment : **NON SHUT OFF OIL PULSE SCREWDRIVER (STRAIGHT TYPE)**

Model/ Serial No. : **IPS-2210N**

to which this declaration applies, complies with these normative documents:

- Machinery Directive: 2006/42/EC

and conforms to the following EN standard,

- EN ISO 12100: 2010
- EN ISO 11148-6:2012

Name and Signature/Position



Mike Su – Managing Director

Date and Place

2024/12/9

Taipei, Taiwan

IPS-2210N-D-2504A-C5F

NOTE

SUMAKE®

SUMAKE®