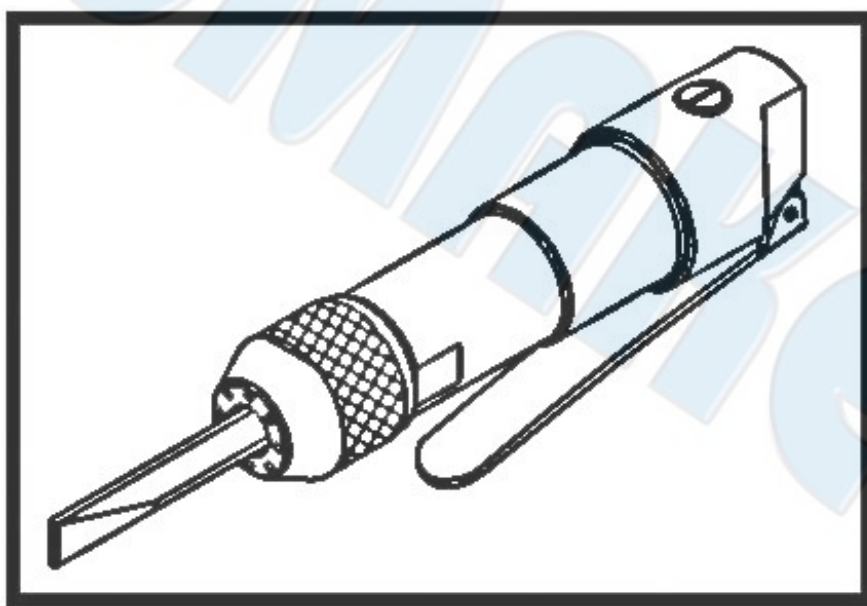




# SUMAKE PNEUMATIC TOOLS



## Air Flux Chipper With 12mm Flat Chisel ST-2558F

### Specification:

Blow Per Minute	4,800 b.p.m.
Piston Stroke	32 mm
Air Consumption	6 CFM (170 L/min)
Overall Length	9-1/4" (235 mm)
Air Inlet (PT)	1/4" (6.35 mm)
Air Hose (I.D.)	3/8" (10 mm)
Air Pressure	90 psi (6.3 bar)
Net Weight	2.42 lbs (1.1 kg)

### Noise and Vibration:

Vibration EN ISO 28927-9	Noise EN ISO 15744	Remark
Load: 23.12 m/s <sup>2</sup>  Uncertainty K= 1.5 m/s <sup>2</sup>	Sound Pressure Level Load: 92 dB(A)	Please always wear ear protector at environment noise level > 80 dB(A) due to risk of impaired hearing!
	Sound power level Load: 103 dB(A)	
	Uncertainty K= 3dB	

SUMAKE INDUSTRIAL CO., LTD

4F,NO.351,Yangguang St.,Neihu District TAIPEI, TAIWAN, ZIP:114-91

ST-2558F-S-2307G-JIF



## EC DECLARATION OF CONFORMITY

We: **SUMAKE INDUSTRIAL CO., LTD.**

**4F, No. 351, Yangguang St., Neihu District, Taipei City, Taiwan**

declare in sole responsibility that the equipment

Equipment : **AIR FLUX CHIPPER**

Model/ Serial No. : **ST-2558F**

to which this declaration applies, complies with these normative documents:

- Machinery Directive: 2006/42/EC

and conforms to the following EN standard,

- EN ISO 12100: 2010
- EN ISO 11148-4:2012

Name and Signature/Position

Mike Su – Managing Director

Date and Place

2024/5/2

Taipei, Taiwan

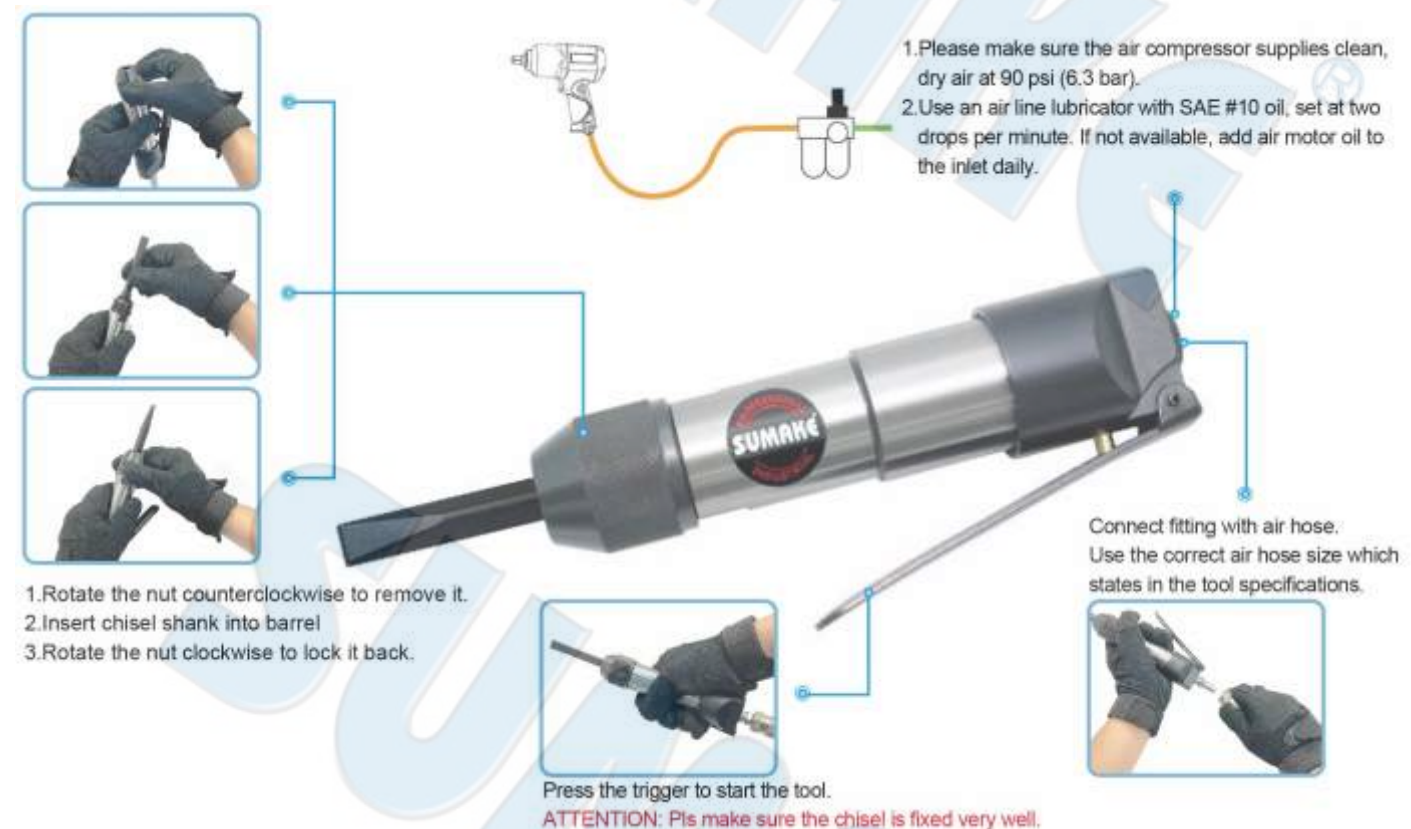
ST-2558F-D-2406F-JIF

## Application:

Ideal for de-slagging, de-sputtering of welds; shot-peening after welding; cleaning metal surfaces of rust and scale; Stripping Paint; Cleaning Castings; Removing Cores, Cleaning Brick and Stone-Work; Cleaning ship plates, Barges, Buoys.

## Operation Method:

1. Before starting work drain any water from the air tank and blow condensation from the air line. Drain compressor more frequently in hot humid weather.
2. Always ensure air is turned off before installing or removing tools etc.
3. Once the appropriate tool is fitted, you are ready to start.
4. Turn on the air supply, and check for air leaks, if any are apparent, rectify before proceeding. Ensure the air pressure is set to 90psi (6.2Bar).
5. Hold the tool with one hand around the handle and the other around the barrel, bring the tool towards the work at an angle of approx. 60-70°. Depress the trigger and allow the needles /chisel to come into contact with the work.

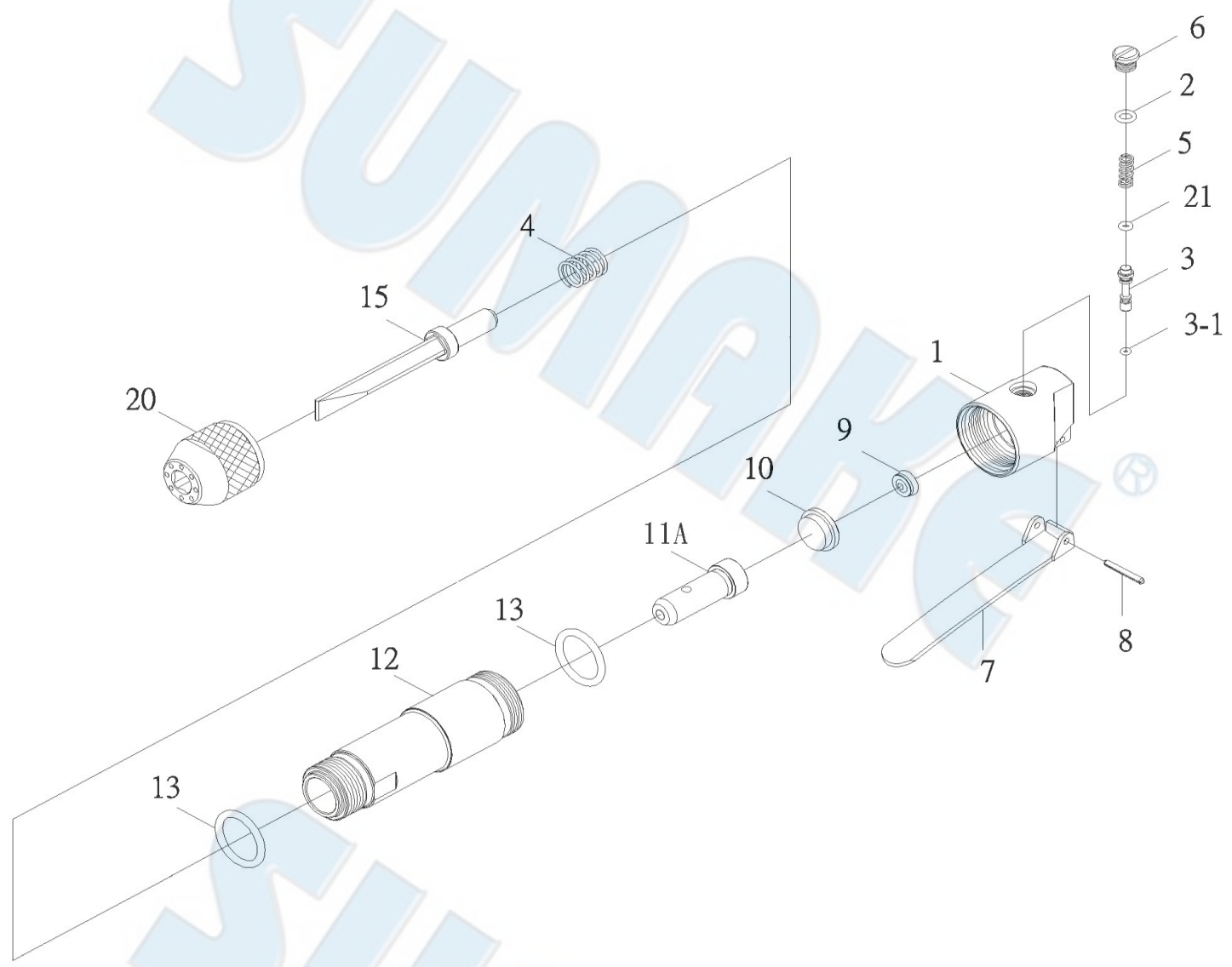


## Common Troubleshooting:

Event	Appearance	Possible Cause	Solution
Not operating	Air is coming from the air inlet	Piston damaged	Replace piston
		Cylinder damaged	Replace cylinder
	No air coming from the air inlet	Regulator is set at off	Adjust regulator
		No air flow	Check air system and connections
Low efficiency	Low revolution rate	Not enough air pressure	Check air pressure
		Air leakage form the tool	Check all connect points and repair
	Motor running abnormal or unusual noises occur	Not enough lubrication, cylinder, piston damaged	Lubricate or replace parts

# ST-2558F

## AIR FLUX CHIPPER WITH 12MM FLAT CHISEL



PARTS LIST

No.	Parts No.	Description	Q'ty
1	2558F-01	Backhead	1
2	2558F-02	O-Ring (P5)	1
3	2558F-03	Throttle Valve	1
3-1	2558F-03-1	O-Ring (2.0x1.5)	1
4	2558F-04	Spring	1
5	2558F-05	Spring	1
6	2558F-06	Valve Cap	1
7	2558F-07	Lever	1
8	2558F-08	Pin (Φ3x24)	1

No.	Parts No.	Description	Q'ty
9	2558F-09	Rubber Cushion	1
10	2558F-10	Rear Valve Block	1
11A	2558F-11A	Piston	1
12	2558F-12	Barrel Sleeve	1
13	2558F-13	O-Ring (Dia. Φ23.7xW3.5) (P24)	2
15	2558F-15	12mm Flat Chisel	1
20	2558F-20	Nut	1
21	2558F-21	O-Ring (Dia. Φ2.8xW1.9) (P3)	1