

### OPERATION INSTRUCTIONS

#### SPECIFICATION:

##### ■ Fluid orifice ...

**SS-1411S**   ☐ 1.4mm   ☐ 1.8mm   ☐ 2.0mm   ☐ 2.5mm

**SS-1411G**   ☐ 0.8mm   ☐ 1.1mm   ☐ 1.4mm   ☐ 1.8mm   ☐ 2.0mm   ☐ 2.5mm

Model No	Type	Nozzle Size ( mm )	Fluid Output ( cc/min )	Pattern Width ( mm )	Cup Capacity ( c.c. )	Gun Weight (g)
SS-1411S-1.4	Suction	1.4	170	255	700 c.c. or 1000 c.c.	486g
SS-1411S		1.8	190	265		
SS-1411S-2.0		2.0	240	275		
SS-1411S-2.5		2.5	260	285		
SS-1411G-0.8	Gravity	0.8	70	240	250 c.c. or 400 c.c.	476g
SS-1411G-1.1		1.1	130	250		
SS-1411G		1.4	190	260		
SS-1411G-1.8		1.8	250	270		
SS-1411G-2.0		2.0	280	280		
SS-1411G-2.5		2.5	300	290		

■ Working Pressure ..... 30 ~ 45 psi (2.1 ~ 3.0kg/cm<sup>2</sup>)

■ Air Consumption .....6.65cfm (190 l/min)

■ Air Inlet.....1/4" NPS

■ Air Hose.....1/4" NPS

#### WARNING

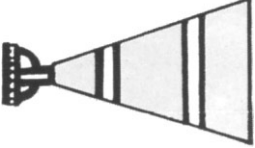



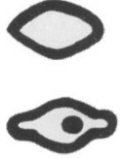
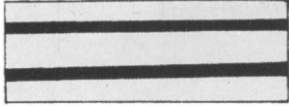
For your safety, always follow the Pressure Relief Procedure Warning on page 4 before checking or servicing any part of the spray system, before installing, cleaning or changing fluid nozzles, and whenever you stop spraying.

#### NOTES:

Check all possible causes and solutions in the Troubleshooting Chart before disassembling the gun.  
Some improper patterns are caused by the improper balance between air and fluid.

## Trouble shooting

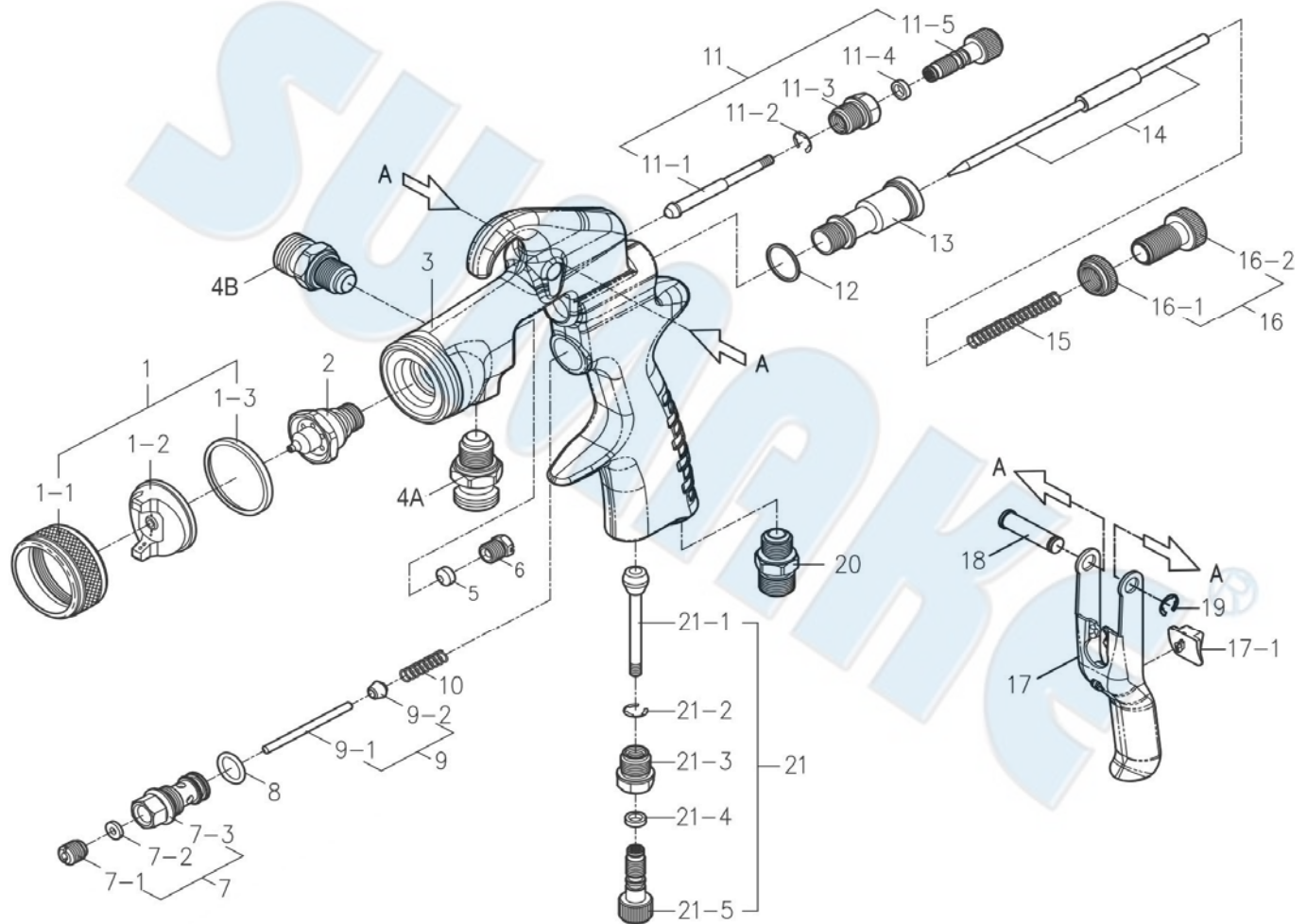
Problem	CAUSE	Solution
Fluid packing nut leaking	Loose needle packing nut Worn needle packing.	Tighten Replace
Air leakage from front of gun.	Air valve not seating properly.	Clean, service.
Fluid leakage from front of gun.	Needle worn or damaged. Worn needle and nozzle seat in fluid nozzle. Needle packings too tight.	Replace. Replace fluid nozzle and needle. Lubricate packings and adjust packing nut.

Problem: Improper spray pattern	CAUSE	CORRECTION
Fluttering or spitting spray 	Insufficient fluid supply. Loose fluid nozzle or damaged fluid nozzle taper seat. Dirt between fluid nozzle, taper seat and body. Loose or cracked fluid inlet fitting. Loose fluid tube in cup or tank. Dry or worn fluid needle packing or loose packing nut permits air to get into fluid passage (siphon feed).	Adjust fluid regulator or fill fluid supply. Tighten fluid nozzle or replace fluid nozzle and needle. Clean.  Tighten or replace fitting. Tighten. Lubricate or replace packings; tighten packing nut.
	Fluid build-up on air cap; partially dogged horn holes. Full air pressure from clean horn hole forces fan pattern toward clogged end. Damaged fluid nozzle or air cap holes.	Clean with soft implement or submerge in suitable solvent and wipe clean.  Replace damaged part.
	Fluid build-up on the perimeter of fluid nozzle orifice, or partially dogged fluid nozzle orifice.	Remove obstruction. Never use wire or hard instruments.
	Too high atomization air pressure.  Fluid too thin. Not enough fluid pressure.	Reduce air pressure or adjust fan adjusting valve. Regulate fluid viscosity. Increase fluid pressure.
	Low atomization air pressure. Fluid too thick. Too much fluid.	Increase air pressure or adjust fan valve. Regulate fluid viscosity. On siphon feed guns, reduce fluid flow by adjusting fluid valve. On pressure feed guns, reduce fluid pressure Adjust fluid adjusting valve until proper pattern is obtained.
Streaks 	Last coat of fluid applied too wet. Too much air pressure. Insufficient air pressure. Non-uniform spray pattern.	Apply drier finish with multiple strokes. Use lowest air pressure necessary. Increase air pressure. Clean or replace air cap.



# SS-1411S, SS-1411G

## SUCTION (GRAVITY) TYPE AIR SPRAY GUN



### PARTS LIST

No.	Parts No.	Description	Q'ty
1	SS1411-01A	Air Nozzle Cap Set -0.8 [SS-1411G]	1
	SS1411-01B	Air Nozzle Cap Set -1.1 [SS-1411G]	1
	SS1411-01C	Air Nozzle Cap Set -1.4 [SS-1411S/G]	1
	SS1411-01D	Air Nozzle Cap Set -1.8 [SS-1411S/G]	1
	SS1411-01E	Air Nozzle Cap Set -2.0 [SS-1411S/G]	1
	SS1411-01F	Air Nozzle Cap Set -2.5 [SS-1411S/G]	1
2	SS1411-02A	Fluid Nozzle -0.8 [SS-1411G]	1
	SS1411-02B	Fluid Nozzle -1.1 [SS-1411G]	1
	SS1411-02C	Fluid Nozzle -1.4 [SS-1411S/G]	1
	SS1411-02D	Fluid Nozzle -1.8 [SS-1411S/G]	1
	SS1411-02E	Fluid Nozzle -2.0 [SS-1411S/G]	1
	SS1411-02F	Fluid Nozzle -2.5 [SS-1411S/G]	1
3	SS1411-03A	Gun Body-Suction Type [SS-1411S]	1
	SS1411-03B	Gun Body-Gravity Type [SS-1411G]	1
4A	SS1411-04A	3/8" Fluid Inlet [SS-1411S]	1
4B	SS1411-04B	1/4" Fluid Inlet [SS-1411G]	1
5	SS1411-05	Teflon Seal	1
6	SS1411-06	Packing Screw For Paint Needle	1
7	SS1411-07	Air Valve Seat Set [Incl. 7-1, 7-2, 7-3]	1
8	SS1411-08	O-Ring	1
9	SS1411-09	Air Valve [Incl. 9-1, 9-2]	1
10	SS1411-10	Spring	1

No.	Parts No.	Description	Q'ty
11	SS1411-11	Spreader Valve Assembly [Incl. 11-1, 11-2, 11-3, 11-4, 11-5]	1
12	SS1411-12	Gasket	1
13	SS1411-13	Bushing	1
14	SS1411-14A	Fluid Needle Set -0.8 [SS-1411G]	1
	SS1411-14B	Fluid Needle Set -1.1 [SS-1411G]	1
	SS1411-14C	Fluid Needle Set -1.4 [SS-1411S/G]	1
	SS1411-14D	Fluid Needle Set -1.8 [SS-1411S/G]	1
	SS1411-14E	Fluid Needle Set -2.0 [SS-1411S/G]	1
	SS1411-14F	Fluid Needle Set -2.5 [SS-1411S/G]	1
15	SS1411-15	Needle Spring	1
16	SS1411-16	Control Knob Set [Incl. 16-1, 16-2]	1
17	SS1411-17	Trigger	1
17-1	SS1411-17-1	Gasket	1
18	SS1411-18	Pin	1
19	SS1411-19	E-Stopper	1
20	SS1411-20	Air Inlet Nipple	1
21	SS1411-21	Cheater Valve Assembly [Incl. 21-1, 21-2, 21-3, 21-4, 21-5]	1

NOTE

SUMAKE®

SUMAKE®