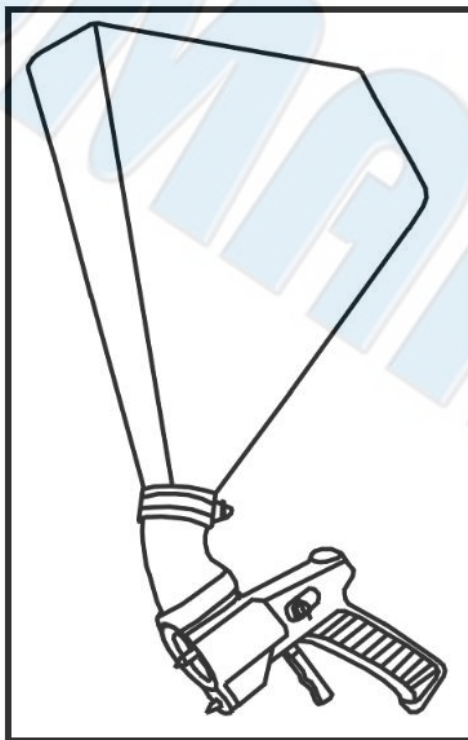




SUMAKE PNEUMATIC TOOLS



Air Texture Hopper Spray Gun SS-1183

Specification:

| | |
|-----------------|-----------------------------------------|
| Free Type | Gravity |
| Standard Nozzle | 1.5, 2.7, 3.5, 3.6 |
| Capacity Of Cup | 7.0 L |
| Air Consumption | 7 ~ 12 CFM (200 ~ 340 L/min) |
| Air Inlet (NPS) | 1/4" (6.35 mm) |
| Air Hose (NPS) | 3/8" (10 mm) |
| Air Pressure | 30~50 psi (2.1~3.5 kg/cm ²) |
| Net Weight | 3.0 lbs (1.3 kg) |

Noise and Vibration:

| Vibration | Noise | Remark |
|----------------------------------------------------------------------|------------------------------------|------------------------------------------------------------------------------------------------------------------------------|
| 0.095 m/s ² Uncertainty K= 1.5 m/s ² | Sound Pressure Level : 81 dB(A) | Please always wear ear protector at environment noise level > 80 dB(A) due to risk of impaired hearing! |
| | Sound power level : 92 dB(A) | |
| | Uncertainty K= 3dB | |

SUMAKE INDUSTRIAL CO., LTD

4F,NO.351,Yanguang St.,Neihu District TAIPEI, TAIWAN, ZIP:114-91

SS-1183-S-1605B-GWF



EC DECLARATION OF CONFORMITY

We: **SUMAKE INDUSTRIAL CO., LTD.**

4F, No. 351, Yangguang St., Neihu District, Taipei City, Taiwan

declare in sole responsibility that the equipment

Equipment : **AIR TEXTURE HOPPER SPRAY GUN**

Model/ Serial No. : **SS-1183**

to which this declaration applies, complies with these normative documents:

- Machinery Directive: 2006/42/EC

and conforms to the following EN standard,

- EN ISO 12100: 2010
- EN 1953:2013

Name and Signature/Position

Mike Su – Managing Director

Date and Place

2022/12/1

Taipei, Taiwan

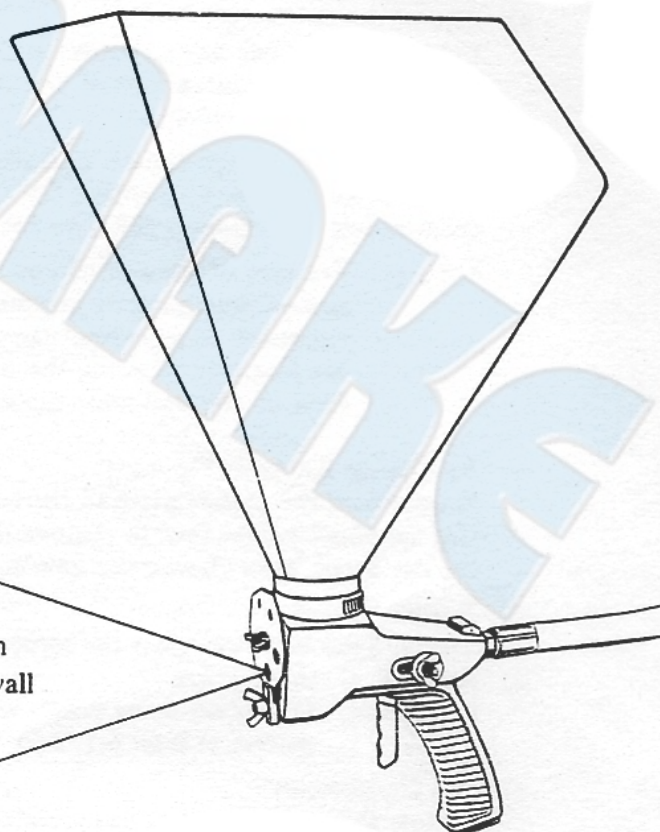
SS-1183-D-2310D-GWF

AIR TEXTURE GUN



AIR TEXTURE GUN

- The very best helper to your jubs.
- Complete hand held texture applying machine, lets you spray most liquid dry wall materials, from joint cement, to ceiling acoustics, wall texture, splatter, semi-fog or any other sprayable material that will feed through the Hopper by gravity.



IMPORTANT: Read before using so that you can operate and maintain the gun for maximum efficiency and longer life.

CONTENTS:

- 1 = Pistol Air Texture Gun: With convenient storage area for orifices and tools.
- 1 = Large Plastic Hopper: Made of high-impact plastic for lightness and durability. With seamless design stops clogging and material build-up, capacity: 1-3/4 Gallon.
- 1 = 45° Offset Connector: Lets you do ceiling or walls.
- 4 = Spraying Nozzles: Orifices – 1.5mm, 2.7mm, 3.5mm & 3.6mm.
- 1 = Circular Front Plate: Provides five alternative orifices of 7/32", 1/4", 5/16", 3/8" and 7/16". All orifices adapt to either spraying nozzle for up to 15 different settings.
- 1 = Hexagonal Wrench
- 1 = 3/8" Tip Socket

SS-1183-I-0412A-GW

OPERATIONS:

A) How to establish your patterns:

To change a texture, you may adjust in four ways:

a) Size of the Orifice

Every Texture Gun has a circular orifice disc attached, for which you can select one of five orifice sizes; 1.5, 2.7 and 3.5mm.

If you want to change orifice, pull trigger back at least 1/8", rotate the disc to position the orifice you require, then thumbscrew finger, tight, no need of plier to be applied.

* Notes: The size of the orifice you use depends on the size of the aggregate in your mix. It's no necessary to disconnet the air hose to refill the Hopper; releasing the trigger stops the flow of material immediately.

b) To Change Air Stem Opening

Simply turn the orifice plate to the largest (7/16") opening. Use the small socket tool to remove the Spraying Nozzle from the Air Stem, then choose the new one to replace with.

c) Trigger Setting

Trigger Stop lets you select the same patter every time.

d) Amount of Air Pressure

Important: If you are using your own compressor, it should deliver at least 6-1/2 CFM.

e) Mix Consistency

Follow the manufacturers instruction when mixing materials. If you have trouble, call your material salesman.

B) Pointers in Mixing—

Mix materials thoroughly before using. Must be free of lumps.

C) Spraying Instructions—

a) When spraying simulated acoustics, loosen the orifice plate nut and pull the trigger back. Dial the orifice plate to the third size (5/16") opening; counting from the smallest (7/32") to the third large size (5/16").

b) When spraying sand finish with dry wall material, adjust the orifice plate to the smallest (7/32") , or next size large (1/4") opening. Same way when it applys to the cement, snad, and lime to cement surfaces.

c) When spraying orange peel texture, choose the orifice plate to the smallest (7/32") opening. Set the stop lock on the Gun to make Spraying Nozzle to be approx. 1/16" from the Orifice Plate, this will allow a small amount of material to flow from the Gun and cause the pattern to leave an orange peel texture.

- d) When spraying a splatter texture, adjust air pressure to be approx. 4-6 Lbs. Dial the orifice plate to the third smallest ($5/16''$), or the fourth size ($1/4''$) opening. Freely change size of texture by air pressure, or changing openings in orifice plate.

Notes: For all the above, avoids up and down, or back and forth motions.

- e) The Air Texture Gun can spray glitter, though it will waste you a little more glitter than with a special Glitter Gun. Keep your material and Gun dry. DO NOT use too much or too little air pressure or you will waste materials, 15PSI is recommended to apply glitter to acoustical materials; 25-30PSI apply glitter to cement and stucco surface.

Notes: DO NOT wait too long to spray glitter. There must be enough "tack" left in the surface of the material to form a secure and permanent bond with the glitter.

MAINTENANCE:

- 1) **KEEP IT CLEAN**-Always use clean water to clean both Gun and Hopper.
- 2) **IMPORTANT OILING INSTRUCTIONS**— Through cleaning away on the Gun, apply a few drops of oil to the back of the Air Stem to lubricate the Rear Bushing through the slot that holds the Trigger Stop in place.

Also, turn the Gun upside down, pull back Trigger and apply same to the front part of the Air Stem to lubricate Front Bushing.

- 3) **REMEMBER**— When reassembling the Gun, be sure to adjust the Trigger on the Air Stem so that the Air Stem protrudes $1/6''$ past the Nose Piece when the Trigger is in the full forward position, else it will seat improperly. Double check if the front of the Air Orifice does bear against the front of the Gun to avoid any leakage at this point.

Also, be sure to put a sealant between the right and left hand casting, it will prevent the Gun from leaking, or from a sticking Trigger.

MATERIALS CAN BE APPLIED:

This is just a partial list, if there's any doubt, test small amount of material in your Gun. Any more trouble in spraying a particular material, please write us concerning your problems.

Wel-Cote All Purpose Joint, Topping &
Texturing Cement

Wel-Cote Commercial Texture Paint

Wel-Cote Professional Texture Paint

Wel-Cote Special Spray Textures

Wel-Cote Professional Spray Surfacers

Wei-Cote Acousti-Spray

Wei-Cote Styro Spray

—WELCO MANUFACTURING

Acoustic Ceiling Spray Texture

—REARDON COMPANY

S-1000 Texture

V-1000 Texture

—RUCO, INC.

Gold Bond Texture

Gold Bond Joint Compound

Gold Bond Perfect Spray Ceiling Texture

Gold Bond Spray Quick Ceiling Texture

Gold Bond Wall Spray Texture

—NATIONAL GYPSUM

Triko Aristex (an acoustical-type texture in 3
grades: regular, commercial & medium
fine)

Triko Sand Finish Texture (sand finish tex-
ture in powder form, White)

Triko Super-Tex (regular texture, super-
white)

Triko "3 in 1" (all-purpose product, Used for
most type textures from fine to medium
heavy. Off-white)

—PROKO COMPANY

USG* Imperial QT Texture Finish

USG* Spray Texture Paint

Cementico (Portland-line & additives)

USG* Multi-Purpose Texture Finish

Durabond Waterproofing Coating

USG* Duracal Latex Texture

—U.S. GYPSUM

Hi-Fio Simulated Acoustical Ceiling
Texture

Hi-Fio Simulated Acoustical Ceiling
Texture Premixed

Hi-Flo and Hi-Finish Wall Texture

—DRYWALL SUPPLY, INC.

Vermiculite

Polystyrene

—GEORGIA-PACIFIC

Hamilton Plas-Tex Ceiling & Wall Texture

Hamilton Puretex Ceiling & Wall Texture

—HAMILTON DISTRIBUTING, INC.

Acoustex — Interior Vermiculite Ceiling
Texture

Fio-Spray — Interior Polystyrene Ceiling
Texture

Snowflake — Interior Polystyrene Ceiling
Texture

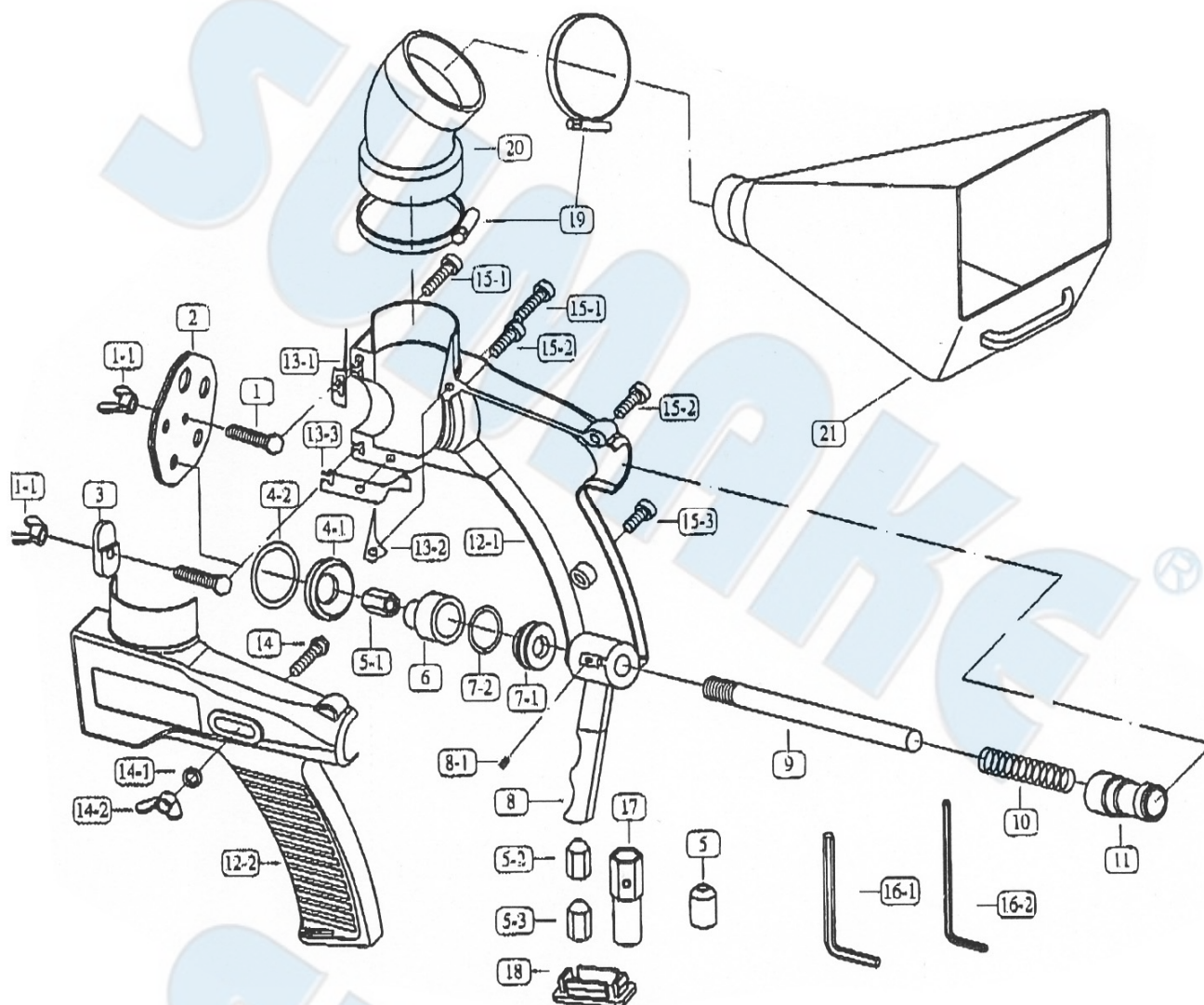
Joint Compound — Dry Ready-Mix

Flo-Tex Wall Texture — Interior Wall Texture

P.V.L. Ceiling Texture — Interior Perlite
Ceiling Texture

—PREMIX-MARBLETITE CO.

SS-1183 AIR TEXTURE HOPPER SPRAY GUN



PARTS LIST

| No. | Parts No. | Description | Q'ty |
|-----|------------|-----------------------|------|
| 1 | 1183A-01 | Hexagon Screw | 2 |
| 1-1 | 1183A-01-1 | Thumb Nut | 2 |
| 2 | 1183A-02 | Guide Block | 1 |
| 3 | 1183A-03 | Extenal Orifice Plate | 1 |
| 4-1 | 1183A-04-1 | Outlet Ring | 1 |
| 4-2 | 1183A-04-2 | O-Ring | 1 |
| 5 | 1183A-05 | Jumbo Orifice-3.5mm | 1 |
| 5-1 | 1183A-05-1 | Orifice-2.7mm | 1 |
| 5-2 | 1183A-05-2 | Orifice-1.5mm | 1 |
| 5-3 | 1183A-05-3 | Orifice-3.5mm | 1 |
| 6 | 1183A-06 | Bonnet | 1 |
| 7-1 | 1183A-07-1 | Air Inlet Bushing | 1 |
| 7-2 | 1183A-07-2 | O-Ring | 1 |
| 8 | 1183A-08 | Throttle Lever | 1 |
| 8-1 | 1183A-08-1 | O-Ring | 1 |
| 9 | 1183A-09 | Inlet Tube | 1 |
| 10 | 1183A-10 | Spring | 1 |
| 11 | 1183A-11 | Air Inlet | 1 |

| No. | Parts No. | Description | Q'ty |
|------|------------|-----------------------|------|
| 12-1 | 1183A-12-1 | Gun Right Section | 1 |
| 12-2 | 1183A-12-2 | Gun Left Section | 1 |
| 13-1 | 1183A-13-1 | Gasket | 1 |
| 13-2 | 1183A-13-2 | Gasket | 1 |
| 13-3 | 1183A-13-3 | Gasket | 1 |
| 14 | 1183A-14 | Hexagon Screw | 1 |
| 14-1 | 1183A-14-1 | Washer | 1 |
| 14-2 | 1183A-14-2 | Thumb Nut | 1 |
| 15-1 | 1183A-15-1 | Socket Head Cap Screw | 2 |
| 15-2 | 1183A-15-2 | Socket Head Cap Screw | 2 |
| 15-3 | 1183A-15-3 | Socket Head Cap Screw | 1 |
| 16-1 | 1183A-16-1 | Hex Wrench - 4mm | 1 |
| 16-2 | 1183A-16-2 | Hex Wrench - 2.5mm | 1 |
| 17 | 1183A-17 | Wrench | 1 |
| 18 | 1183A-18 | End Cap | 1 |
| 19 | 1183A-19 | Clamp | 2 |
| 20 | 1183A-20 | 45° Elbow | 1 |
| 21 | 1183A-21 | Hopper | 1 |



Read all these safety instructions before operating this product and save these instructions.

The tool has been manufactured in conformity with the instruction of EU machine directive. The EU mark will be considered void in the event of inexpert repairs, the use of non-original parts and in case of non-observance of the safety instructions in the user's manual.

Possible direct or indirect consequential damages are not the responsibility of SUMAKE Industrial co., Ltd.

General safety rules:

1. Watch the tool at all times when in use.
2. People under the influence of alcohol or drugs are not allowed to use, repair or maintain the tool.
3. Keep unqualified persons, children, etc. away from the tool.
4. Keep work area clean and with sufficient daylight or artificial lighting. The work area on which the machine is used must be cleaned up. Disorder is a potential cause of accidents.
5. Danger of explosion. Never use oxygen and combustible gas as an air supply for the tool which may be ignited by spark and cause fire or explosion.
6. Never use gasoline or other flammable liquids to clean the tool.
7. Do not use air tools in potentially explosive atmospheres such as in the presence of flammable liquids, cleaning solvents, fluid energy or stored gases.
8. Do not expose air tools to rain. Do not use air tools in damp or wet locations.
9. When a fault or failure is detected, the tool must immediately be disconnected from the air supply and returned for repair.
10. It is not permitted to modify the tool in any way.
11. When not in use, keep tools in a dry place, either locked up or in a high place, out of the reach of children.
12. Do not force small air tools to do the job of a heavy –duty task. Do not use air tool for purpose of which was not intended.
13. Wear suitable ear protection at environment noise level >80dB(A) and safety spectacles when using the tool. Always wear approved safety goggles if work in dusty. This also applies to other persons in the nearby vicinity.
14. Do not wear loose clothing or jewelry. They can be caught in moving parts. Rubber gloves and non-skid foot wear are recommended when working outdoors. Wear protective hair covering to contain long hair.
15. Keep proper footing and balance at all times.
16. Use clamps or a vice to hold work-piece. It is safer than using your hand and free both hands to operate the air tool.
17. When not use, before performing service or changing accessories, please disconnect tool from air compressor.
18. Do not carry plugged in air tool with your finger on the switch trigger. Be sure switch is in the "OFF" position when connecting to air supply.
19. Watch what you are doing. Use common sense, even unsafe situation or unbalanced positions, particularly when you are tired.
20. Air powered tools can vibrate in use. Vibration, repetitive motions or uncomfortable positions may be harmful to your hands or arms. Stop using any tool if discomfort, tingling feeling or pain occurs. Seek medical advice before resuming use.
21. Multiple hazards. Read and understand the safety instructions before installing, operating, repairing, maintaining, changing accessories on, or working near the tool. Failure to do so can result in serious bodily injury.
22. Only qualified and trained operators should install, adjust or use the tool.
23. Do not modify the tool. Modifications may reduce the effectiveness of safety measures and increase the risks to the operator.
24. Do not discard the safety instructions – give them to the operator.
25. Do not use the tool if it has been damaged.
26. Tools shall be inspected periodically to verify the ratings and markings required by this document are legibly marked on the tool. The employer/user shall contact the manufacturer to obtain replacement marking labels when necessary.

Safety precautions for projectile hazards

1. Disconnect the tool from the energy source when changing inserted tool or accessories.
2. Failure of the accessories may generate high velocity projectiles.
3. Always wear impact-resistant eye protection during operation of the tool. The grade of protection required should be assessed for each use.
4. The risks to others should also be assessed at this time.
5. Ensure that the work piece is securely fixed.

Safety precautions for operating hazards

1. Use of the tool may expose the operator's hands to hazards including crushing, impacts, cuts and abrasions and heat. Wear suitable gloves to protect hands.
2. Operators and maintenance personnel must be physically able to handle the bulk, weight and power of the tool.
3. Hold the tool correctly: be ready to counteract normal or sudden movements – have both hands available.
4. Maintain a balanced body position and secure footing.
5. Release the start and stop device in the case of an interruption of the energy supply.
6. Use only lubricants recommended by the manufacturer.
7. That unsuitable postures may not allow counteracting of normal or unexpected movement of the tool.
8. If the tool is fixed to suspension device make sure that the fixation is secure.

Safety precautions for repetitive motions hazards

1. When using the tool, the operator may experience discomfort in the hands, arms, shoulders, neck, or other parts of the body.
2. While using the tool, the operator should adopt a comfortable posture. Maintain secure footing and avoid awkward or off-balanced postures. The operator should change the posture during extended tasks which may help avoid discomfort and fatigue.
3. If the operator experience symptoms such as persistent or recurring discomfort, pain, throbbing, aching, tingling, numbness, burning sensation or stiffness, these warning signs should not be ignored. The operator should tell the employer and consult a qualified health professional.

Safety precautions for accessory hazards

1. Disconnect power tool from energy supply before changing the accessory.
2. Only use sizes and types of accessories and consumables that are recommended by the tool manufacturer.

Safety precautions for workplace hazards

1. Slips, trips and falls are major causes of workplace injury. Be aware of slippery surfaces caused by use of the tool and also of trip hazards caused by the air line.
2. Proceed with care in unfamiliar surroundings. Hidden hazards may exist, such as electricity or other utility lines.
3. The tool is not intended for use in potentially explosive atmospheres and is not insulated from coming into contact with electric power.
4. Make sure there are no electrical cables, gas pipes etc. that could cause a hazard if damaged by use of the tool.

Safety precautions for dust and fume hazards

1. Dusts and fumes generated when using the tool can cause ill health (for example: cancer, birth defects, asthma and/or dermatitis); risk assessment of these hazards and implementation of appropriate controls of is essential.
2. Risk assessment should include dust created by the use of the tool and the potential for disturbing existing dust.
3. Operate and maintain the power tool as recommended in these instructions, to minimise dust or fume emissions.
4. Direct the exhaust so as to minimise disturbance of dust in a dust filled environment
5. Where dusts or fumes are created, the priority shall be to control them at the point of emission.
6. All integral features or accessories for the collection, extraction or suppression of airborne dust or fumes should be correctly used and maintained in accordance with the manufacturer's instructions.
7. Use respiratory protection as instructed by your employer or as required by occupational health and safety regulations.

Safety precautions for noise hazards

1. Unprotected exposure to high noise levels can cause permanent, disabling, hearing loss and other problems such as tinnitus (ringing, buzzing, whistling or humming in the ears).
2. Risk assessment of these hazards and implementation of appropriate controls of is essential.
3. Appropriate controls to reduce the risk may include actions such as damping materials to prevent work pieces from 'ringing'.
4. Use hearing protection as instructed by your employer or as required by occupational health and safety regulations.
5. Operate and maintain the power tool as recommended in these instructions, to prevent an unnecessary increase in noise.
6. If the tool has a silencer, always ensure it is in place and in good working order when the tool is operating.
7. Select, maintain and replace the consumable/inserted tool as recommended in these instructions, to prevent an unnecessary increase in noise.

Safety precautions for vibration hazards

1. Exposure to vibration can cause disabling damage to the nerves and blood supply of the hands and arms.
2. Wear warm clothing when working in cold conditions and keep your hands warm and dry.
3. If you experience numbness, tingling, pain or whitening of the skin in your fingers or hands, stop using the assembly power tool for non-threaded mechanical fasteners, tell your employer and consult a physician.
4. Support the weight of the tool in a stand, tensioner or balancer, because the operator can then use a lighter grip to support the tool.

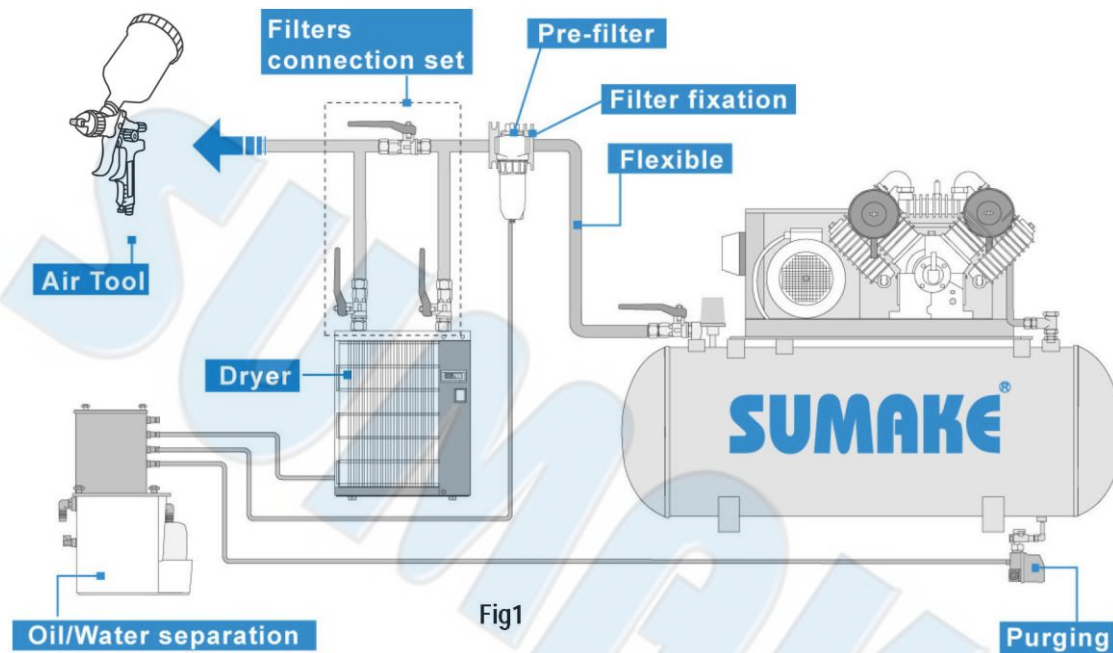
Additional safety instructions for pneumatic power tools

1. Always shut off air supply, drain hose of air pressure and disconnect tool from air supply when not in use, before changing accessories or when making repairs.
2. Never direct spraying air or liquid at yourself or anyone else.
3. Whipping hoses can cause severe injury. Always check for damaged or loose hoses and fittings.
4. Cold air shall be directed away from the hands.
5. Whenever universal twist couplings (claw couplings) are used, lock pins shall be installed and whipcheck safety cables shall be used to safeguard against possible hose-to-tool and hose-and-hose connection failure.
6. Do not exceed the maximum air pressure stated on the tool.
7. Never carry an air tool by the hose.

Specific safety instructions

Warnings shall be given about any specific or unusual hazards associated with the use of the power tool. Such warnings shall indicate the nature of the hazard, the risk of injury and the avoidance action to take.

General preparation and connection:



1. Before connecting the air hose, apply 4 to 5 drops of SAE#10-20 spindle oil at the air inlet. Also, every 3 to 4 hours of operation, oiling is necessary. Twist Teflon thread tape to ensure a proper seal air inlet. Then tighten the air coupler into air tool.
2. The supplied compressed air must be clean and dry, with the appropriate oil mist. Use an air treatment unit; filter, regulator and lubricator.
3. Please refer Fig.1 illustration shows the correct mode of connection to the air supply system which will increase the efficiency and useful life of the tool.
4. The quick connect coupling and hose must have sufficient air flow capacity. We recommend an air hose with a diameter of 10mm (3/8").
5. To ensure a good performance. The operation pressure at the compressed air inlet please refer specification indication. Higher operating pressures may cause damaged or excessive wear. Operating pressures below 5.3bar may cause pressure or power loss.



Risk of injury

1. Compressed air can inflict serious injuries. Therefore never point the air hose at another person or yourself.
2. Shut – off the air supply and disconnect the tool in case:
 - You want to change or replace accessories.
 - You want to clean, repair or maintain the tool.
 - The tool is not going to use for some times.
3. Check compressed air hose before use. If it is damaged, broken, torn, or deformed, the hose is not to be connected to the tool.
4. Always check the pneumatic couplings before using the tool. If they show signs of damage, fracture, cracking or excessive corrosion, the respective tool or the air hose is not to be used.
5. Use only qualified adapters and connectors, In case of wear they are to be replaced immediately.
6. Only use air pipes that are fit for the use at maximum pressure.

Maintenance instruction:

1. Dry the filter (fig1) and the air inlet of the tool.
2. Lubricate the quick connect coupling to prevent blocking.
3. Air tool require lubrication throughout the life of the tool. The air motor and bearing uses compressed air to start the tool. The moisture in compressed air will rust the air motor; you must lubricate the motor daily.
4. Avoid storing the tool in a location subject to high humidity. If the tool is left as it is used, the residual moisture inside the tool can cause rust.
5. Before storage, lubricate tool and run it for a few seconds.
6. Regular inspection of spindles, threads, and clamping devices in respect of wear and tolerances for location of abrasive products.
7. If the tool is too seriously damage to be used anymore, recycle raw material instead of disposing as waste. The machine, accessories and packaging should be sorted for environmental-friendly recycling. Check with your local authority or retailer for recycling advice.

