



SUMAKE *PNEUMATIC TOOLS*



H.V.L.P. Spray Gun, 1000 c.c. Cup (Suction Type) Water Born Paint SS-1113WHS

Specification:

Free Type	Suction
Standard Nozzle	1.5 mm
Option Nozzle	1.3mm, 1.7mm, 1.9mm, 2.2mm
Capacity Of Cup	1 L
Air Consumption	8.8 CFM (249 L/min)
Air Inlet (NPS)	1/4" (6.35 mm)
Air Hose (NPS)	3/8" (10 mm)
Air Pressure	43 psi (3 kg/cm ²)
Net Weight	3.02 lbs (1.37 kg)

Noise and Vibration:

Vibration	Noise	Remark
$< 2.5 \text{ m/s}^2$ Uncertainty K= 1.5 m/s ²	Sound Pressure Level : 70 dB(A)	Please always wear ear protector at environment noise level > 80 dB(A) due to risk of impaired hearing!
	Sound power level : 81 dB(A)	
	Uncertainty K= 3dB	

SUMAKE INDUSTRIAL CO., LTD

4F,NO.351,Yangguang St.,Neihu District TAIPEI, TAIWAN, ZIP:114-91

SS-1113WHS-S-1906B-GWF



EC DECLARATION OF CONFORMITY

We: **SUMAKE INDUSTRIAL CO., LTD.**
4F, No. 351, Yangguang St., Neihu District, Taipei City, Taiwan

declare in sole responsibility that the equipment

Equipment : **HVLP SPRAY GUN W/1000CC CUP (SUCTION TYPE) WATER BORN PAINT**

Model/ Serial No. : **SS-1113WHS**

to which this declaration applies, complies with these normative documents:

- Machinery Directive: 2006/42/EC

and conforms to the following EN standard,

- EN ISO 12100: 2010
- EN 1953:2013

Name and Signature/Position



Mike Su - Managing Director

Date and Place

2014/9/15

Taipei, Taiwan

SS-1113WHS-D-1906B-GWF

Prior to operation read the operating instructions carefully.

Operation

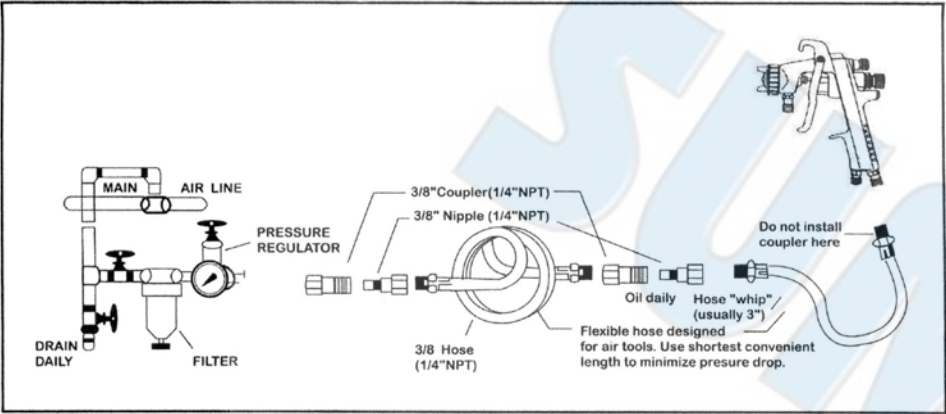
The SPRAY GUN has been designed as a hand head, air operated tool, and in the interests of safety must only be used for the purpose for which it has been designed. The tool should on no account be used for any other purpose for whatever reason, this could result in danger to the operator and those within the immediate working area.

The SPRAY GUN should be connected to a clean air supply using the recommended fittings and hose size as specified in the diagram. Whenever possible there should be an air filter & regulator in the system as diagram. The recommended pressure at the tool should measure 60psi while running free. Check fitting and hoses regularly of fraying, or accidental damage. Replace any worn items before continuing to operate the spray gun.

Always connect the cup and the are hose tightly to the spray gun before use. Ensure the material and air supply are disconnected before effecting any work on the spray gun.

Adjustment

- To obtain the required spraying pattern. Volume of fluid and degree of atomization, use the pattern adjusting knob, air adjusting knob and the fluid adjusting knob.
- To adjust the pattern-turn the pattern adjusting knob to the left to widen the spray pattern and to the right to narrow the spray pattern.
 - To adjust the fluid output-turn the fluid adjusting knob to the right to reduce the fluid output and to the left to increase the fluid output. Turning the fluid adjusting knob fully to the right will stop the fluid completely, the spray gun will then only emit air.
 - To adjust the air volume-turn the air adjusting knob right to reduce the air volume and to the left to increase the air volume.
 - The recommended air pressure is 3.0-3.5bar(43-50psi). the recommended spray distance to object is 15-20cm(6-8inches).



Servicing:

- Clean air cap, fluid nozzle and fluid needle with brush after cache operation.
- Do not submerge complete spray gun in solvents
- Flush the gun material passage with a compatible solvent.
- Fluid needle packing set should not be tighten completely, or the needle will be sluggish
- Turning the fluid adjusting knob too fat to the left will weaken the fluid needle spring, this will make the fluid nozzle to lock


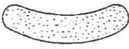





Personal protective equipment

The use of breathing mask is recommended at all limes when spraying. The noise level may exceed 85dB(A) when the spray gun is being used, a sound absorber and gloves when spraying or cleaning. There are no vibrations to be transmitted to the operator when using the spray gun. Lower back stork.

Safety

- Never allow untrained or unauthorized persons to operate this spray gun.
- Never exceed the recommended air pressure.
- Do not carry or pull the gun by the hose, this could cause failure of the hose/gun connection and result in danger to the operator or other workers.
- Use only original spare parts.
- Never use matches, smoke or operate a spray gun in the vicinity of a naked flame.
- Do not use the following solvents 1, 1, 1-trichloroethane and methylene chloride. These solvents can chemically react with aluminium used in spray guns and fluid cups possibly casing an explosion. Do not use these solvents for equipment cleaning or flushing. Spray gun should never be stored in acid laden cleaners. If in doubt consult the material supplier.

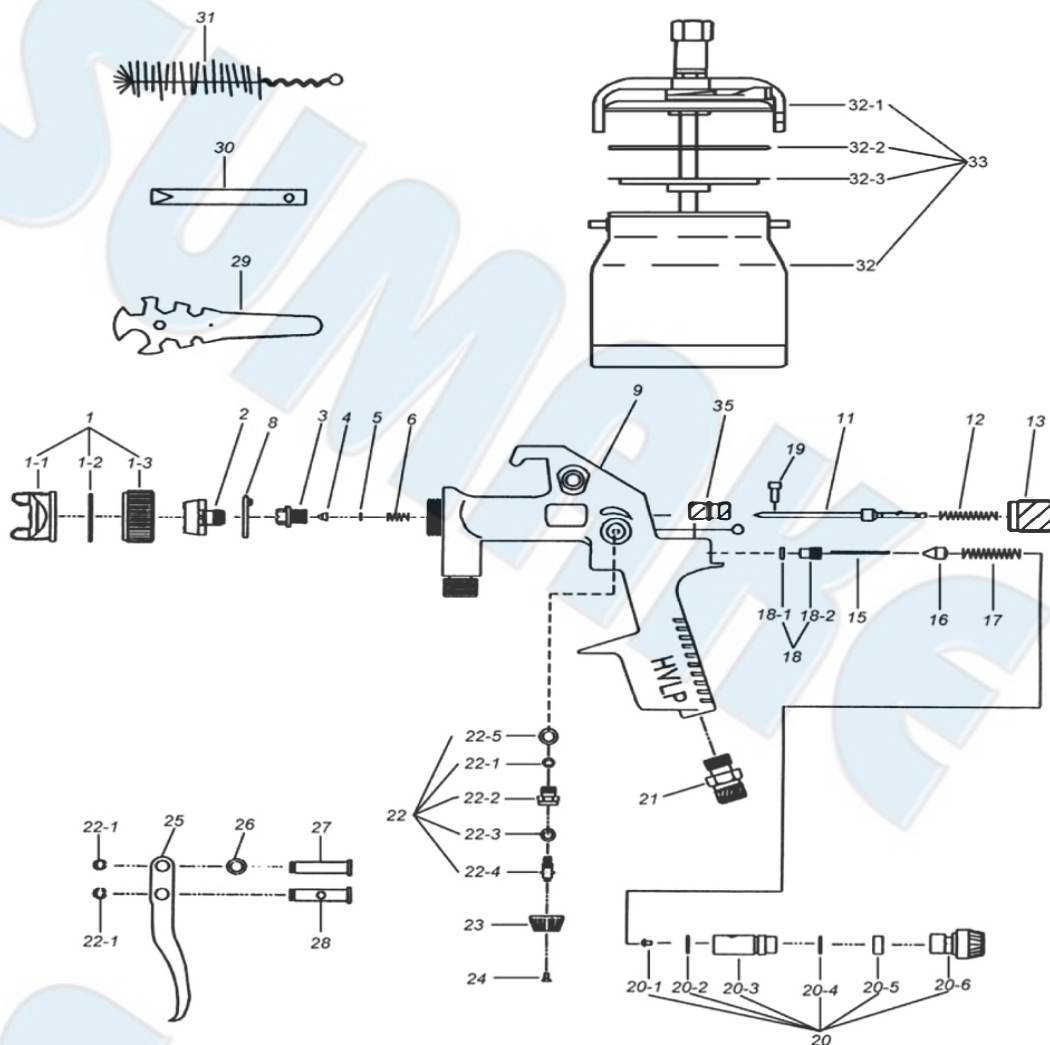
Troubleshooting

Spray Pattern	Problems	Remedies
 Material spray flutters	<ol style="list-style-type: none">Too little material in cup.Dry or worn fluid needle packing set or loose fluid needle packing nut.Loose or damaged fluid nozzle.	<ol style="list-style-type: none">Refill material.Lubricate or replace fluid needle packing set or tighten fluid needle packing nutTighten or replace fluid nozzle
 Crescent	<ol style="list-style-type: none">Material build-up in air cap.	<ol style="list-style-type: none">Clean air cap with proper objects.Clogged air holes must not be cleaned with metal objects
 Heavy top or bottom	<ol style="list-style-type: none">Mater build-up on air capDirty or damaged fluid nozzle	<ol style="list-style-type: none">Clean or replace air capClean or replace fluid nozzle
 Split	<ol style="list-style-type: none">Material too thin or not enough.Atomizing air pressure too high.	<ol style="list-style-type: none">Increase material viscosityReduce air pressure
 Heavy center	<ol style="list-style-type: none">Material too thick or too much.Atomizing air pressure too low.	<ol style="list-style-type: none">Reduce material viscosity.Increase air pressure.
 Gun drips form fluid nozzle	<ol style="list-style-type: none">Obstructions between fluid nozzle and fluid needle.Worn fluid nozzle or needle.	<ol style="list-style-type: none">Clean fluid nozzle and fluid nozzle in thinner.Replace parts.
 Gun leaks from needle packing nut	<ol style="list-style-type: none">Loose fluid needle packing nut.Dry or worn fluid needle packing nut.	<ol style="list-style-type: none">Tighten fluid needle packing nut, check fluid needle for free movement.Lubricate or replace.



SS-1113WHS

HVLP SPRAY GUN W/1000CC CUP(SUCTION TYPE)WATER BORN PAINT



PARTS LIST

No.	Parts No.	Description	Q'ty
1	1113W-01	Air Nozzle W/Brass cap	1
2	1113W-02A	Fluid Nozzle 1.3	1
	1113W-02B	Fluid Nozzle 1.4	1
	1113W-02C	Fluid Nozzle 1.5	1
	1113W-02D	Fluid Nozzle 1.7	1
	1113W-02E	Fluid Nozzle 1.9	1
	1113W-02F	Fluid Nozzle 2.0	1
	1113W-02G	Fluid Nozzle 2.2	1
	1113W-02H	Fluid Nozzle 2.5	1
3	1113W-03	Packing Screw For Paint Needle	1
4	1113-04	Taflon Seal	1
5	1113-05	Washer	1
6	1113-06	Spring	1
8	1113-08	Gasket	1
9	1113W-09	Gun Body	1
11	1113-11A	Paint Needle-Complete 1.3 [SS-1113W/HG]	1
	1113-11B	Paint Needle-Complete 1.4 [SS-1113W/HG]	1
	1113-11C	Paint Needle-Complete 1.5 [SS-1113W/HG]	1
	1113-11D	Paint Needle-Complete 1.7 [SS-1113W/HG]	1
	1113-11E	Paint Needle-Complete 1.9 [SS-1113W/HG]	1
	1113-11F	Paint Needle-Complete 2.0 [SS-1113W/HG]	1
	1113-11G	Paint Needle-Complete 2.2 [SS-1113W/HG]	1
	1113-11H	Paint Needle-Complete 2.5 [SS-1113W/HG]	1
12	1113-12	Spring For Paint Needle	1
13	1113W-13	Lockout For Fluid Control Knob	1
	1113-15	Stem	1
16	1113-16	Taflon Seal	1

No.	Parts No.	Description	Q'ty
17	1113-17	Spring	1
18	1113-18	Valve	1
19	1113-19	Screw	1
20	1113-20	Air Micrometer Set	1
21	1113-21	Air Connection Piece 1/4" Bsp	1
22	1113-22	Spray Regulating Nut	1
22-1	1113-22-1	E-Ring	1
22-5	1113-22-5	O-Ring	1
23	1113-23	Control Knob	1
24	1113-24	Countersunk Screw	1
25	1113W-25	Trigger	1
26	1113-26	O-Ring	1
27	1113-27	Screw	1
28	1113-28	Pin	1
29	1113-29	Spanner	1
30	1113-30	Socket Spanner	1
31	1113-31	Brush	1
32	1113-32	Cannister	1
32-1	1113-32-1	Complete Lid Assembly	1
32-2	1113-32-2	Valve Screw Check Gasket	1
32-3	1113-32-3	Gasket	1
33	1113-33	Cup And Lid Assembly	1
34	1113-34	Repair Kit For Spray Gun [Incl. 04, 06, 16, 17, 20-3, 20-5, 22-3]	1Set
35	1113W-35	Fluid Control	1



Read all these safety instructions before operating this product and save these instructions.

The tool has been manufactured in conformity with the instruction of EU machine directive. The EU mark will be considered void in the event of inexpert repairs, the use of non-original parts and in case of non-observance of the safety instructions in the user's manual.

Possible direct or indirect consequential damages are not the responsibility of SUMAKE Industrial co., Ltd.

General safety rules:

1. Watch the tool at all times when in use.
2. People under the influence of alcohol or drugs are not allowed to use, repair or maintain the tool.
3. Keep unqualified persons, children, etc. away from the tool.
4. Keep work area clean and with sufficient daylight or artificial lighting. The work area on which the machine is used must be cleaned up. Disorder is a potential cause of accidents.
5. Danger of explosion. Never use oxygen and combustible gas as an air supply for the tool which may be ignited by spark and cause fire or explosion.
6. Never use gasoline or other flammable liquids to clean the tool.
7. Do not use air tools in potentially explosive atmospheres such as in the presence of flammable liquids, cleaning solvents, fluid energy or stored gases.
8. Do not expose air tools to rain. Do not use air tools in damp or wet locations.
9. When a fault or failure is detected, the tool must immediately be disconnected from the air supply and returned for repair.
10. It is not permitted to modify the tool in any way.
11. When not in use, keep tools in a dry place, either locked up or in a high place, out of the reach of children.
12. Do not force small air tools to do the job of a heavy –duty task. Do not use air tool for purpose of which was not intended.
13. Wear suitable ear protection at environment noise level >80dB(A) and safety spectacles when using the tool. Always wear approved safety goggles if work in dusty. This also applies to other persons in the nearby vicinity.
14. Do not wear loose clothing or jewelry. They can be caught in moving parts. Rubber gloves and non-skid foot wear are recommended when working outdoors. Wear protective hair covering to contain long hair.
15. Keep proper footing and balance at all times.
16. Use clamps or a vice to hold work-piece. It is safer than using your hand and free both hands to operate the air tool.
17. When not use, before performing service or changing accessories, please disconnect tool from air compressor.
18. Do not carry plugged in air tool with your finger on the switch trigger. Be sure switch is in the "OFF" position when connecting to air supply.
19. Watch what you are doing. Use common sense, even unsafe situation or unbalanced positions, particularly when you are tired.
20. Air powered tools can vibrate in use. Vibration, repetitive motions or uncomfortable positions may be harmful to your hands or arms. Stop using any tool if discomfort, tingling feeling or pain occurs. Seek medical advice before resuming use.
21. Multiple hazards. Read and understand the safety instructions before installing, operating, repairing, maintaining, changing accessories on, or working near the tool. Failure to do so can result in serious bodily injury.
22. Only qualified and trained operators should install, adjust or use the tool.
23. Do not modify the tool. Modifications may reduce the effectiveness of safety measures and increase the risks to the operator.
24. Do not discard the safety instructions – give them to the operator.
25. Do not use the tool if it has been damaged.
26. Tools shall be inspected periodically to verify the ratings and markings required by this document are legibly marked on the tool. The employer/user shall contact the manufacturer to obtain replacement marking labels when necessary.

Safety precautions for projectile hazards

1. Disconnect the tool from the energy source when changing inserted tool or accessories.
2. Failure of the accessories may generate high velocity projectiles.
3. Always wear impact-resistant eye protection during operation of the tool. The grade of protection required should be assessed for each use.
4. The risks to others should also be assessed at this time.
5. Ensure that the work piece is securely fixed.

Safety precautions for operating hazards

1. Use of the tool may expose the operator's hands to hazards including crushing, impacts, cuts and abrasions and heat. Wear suitable gloves to protect hands.
2. Operators and maintenance personnel must be physically able to handle the bulk, weight and power of the tool.
3. Hold the tool correctly: be ready to counteract normal or sudden movements – have both hands available.
4. Maintain a balanced body position and secure footing.
5. Release the start and stop device in the case of an interruption of the energy supply.
6. Use only lubricants recommended by the manufacturer.
7. That unsuitable postures may not allow counteracting of normal or unexpected movement of the tool.
8. If the tool is fixed to suspension device make sure that the fixation is secure.

Safety precautions for repetitive motions hazards

1. When using the tool, the operator may experience discomfort in the hands, arms, shoulders, neck, or other parts of the body.
2. While using the tool, the operator should adopt a comfortable posture. Maintain secure footing and avoid awkward or off-balanced postures. The operator should change the posture during extended tasks which may help avoid discomfort and fatigue.
3. If the operator experience symptoms such as persistent or recurring discomfort, pain, throbbing, aching, tingling, numbness, burning sensation or stiffness, these warning signs should not be ignored. The operator should tell the employer and consult a qualified health professional.

Safety precautions for accessory hazards

1. Disconnect power tool from energy supply before changing the accessory.
2. Only use sizes and types of accessories and consumables that are recommended by the tool manufacturer.

Safety precautions for workplace hazards

1. Slips, trips and falls are major causes of workplace injury. Be aware of slippery surfaces caused by use of the tool and also of trip hazards caused by the air line.
2. Proceed with care in unfamiliar surroundings. Hidden hazards may exist, such as electricity or other utility lines.
3. The tool is not intended for use in potentially explosive atmospheres and is not insulated from coming into contact with electric power.
4. Make sure there are no electrical cables, gas pipes etc. that could cause a hazard if damaged by use of the tool.

Safety precautions for dust and fume hazards

1. Dusts and fumes generated when using the tool can cause ill health (for example: cancer, birth defects, asthma and/or dermatitis); risk assessment of these hazards and implementation of appropriate controls of is essential.
2. Risk assessment should include dust created by the use of the tool and the potential for disturbing existing dust.
3. Operate and maintain the power tool as recommended in these instructions, to minimise dust or fume emissions.
4. Direct the exhaust so as to minimise disturbance of dust in a dust filled environment
5. Where dusts or fumes are created, the priority shall be to control them at the point of emission.
6. All integral features or accessories for the collection, extraction or suppression of airborne dust or fumes should be correctly used and maintained in accordance with the manufacturer's instructions.
7. Use respiratory protection as instructed by your employer or as required by occupational health and safety regulations.

Safety precautions for noise hazards

1. Unprotected exposure to high noise levels can cause permanent, disabling, hearing loss and other problems such as tinnitus (ringing, buzzing, whistling or humming in the ears).
2. Risk assessment of these hazards and implementation of appropriate controls of is essential.
3. Appropriate controls to reduce the risk may include actions such as damping materials to prevent work pieces from 'ringing'.
4. Use hearing protection as instructed by your employer or as required by occupational health and safety regulations.
5. Operate and maintain the power tool as recommended in these instructions, to prevent an unnecessary increase in noise.
6. If the tool has a silencer, always ensure it is in place and in good working order when the tool is operating.
7. Select, maintain and replace the consumable/inserted tool as recommended in these instructions, to prevent an unnecessary increase in noise.

Safety precautions for vibration hazards

1. Exposure to vibration can cause disabling damage to the nerves and blood supply of the hands and arms.
2. Wear warm clothing when working in cold conditions and keep your hands warm and dry.
3. If you experience numbness, tingling, pain or whitening of the skin in your fingers or hands, stop using the assembly power tool for non-threaded mechanical fasteners, tell your employer and consult a physician.
4. Support the weight of the tool in a stand, tensioner or balancer, because the operator can then use a lighter grip to support the tool.

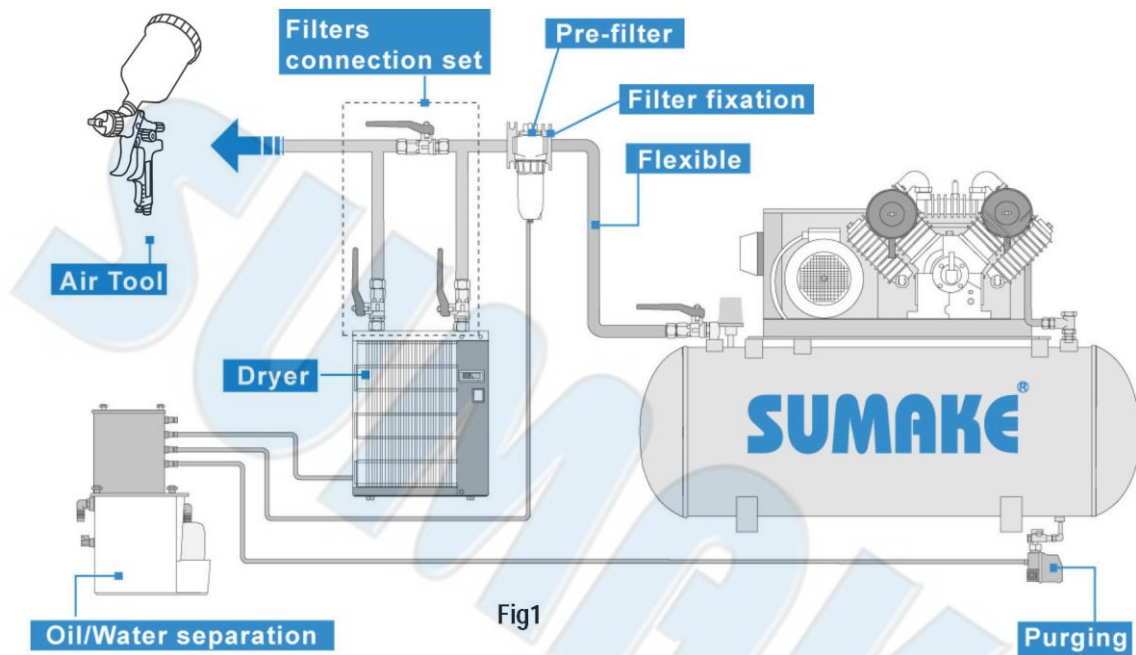
Additional safety instructions for pneumatic power tools

1. Always shut off air supply, drain hose of air pressure and disconnect tool from air supply when not in use, before changing accessories or when making repairs.
2. Never direct spraying air or liquid at yourself or anyone else.
3. Whipping hoses can cause severe injury. Always check for damaged or loose hoses and fittings.
4. Cold air shall be directed away from the hands.
5. Whenever universal twist couplings (claw couplings) are used, lock pins shall be installed and whipcheck safety cables shall be used to safeguard against possible hose-to-tool and hose-and-hose connection failure.
6. Do not exceed the maximum air pressure stated on the tool.
7. Never carry an air tool by the hose.

Specific safety instructions

Warnings shall be given about any specific or unusual hazards associated with the use of the power tool. Such warnings shall indicate the nature of the hazard, the risk of injury and the avoidance action to take.

General preparation and connection:



1. Before connecting the air hose, apply 4 to 5 drops of SAE#10-20 spindle oil at the air inlet. Also, every 3 to 4 hours of operation, oiling is necessary. Twist Teflon thread tape to ensure a proper seal air inlet. Then tighten the air coupler into air tool.
2. The supplied compressed air must be clean and dry, with the appropriate oil mist. Use an air treatment unit; filter, regulator and lubricator.
3. Please refer Fig.1 illustration shows the correct mode of connection to the air supply system which will increase the efficiency and useful life of the tool.
4. The quick connect coupling and hose must have sufficient air flow capacity. We recommend an air hose with a diameter of 10mm (3/8").
5. To ensure a good performance. The operation pressure at the compressed air inlet please refer specification indication. Higher operating pressures may cause damaged or excessive wear. Operating pressures below 5.3bar may cause pressure or power loss.



Risk of injury

1. Compressed air can inflict serious injuries. Therefore never point the air hose at another person or yourself.
2. Shut – off the air supply and disconnect the tool in case:
 - You want to change or replace accessories.
 - You want to clean, repair or maintain the tool.
 - The tool is not going to use for some times.
3. Check compressed air hose before use. If it is damaged, broken, torn, or deformed, the hose is not to be connected to the tool.
4. Always check the pneumatic couplings before using the tool. If they show signs of damage, fracture, cracking or excessive corrosion, the respective tool or the air hose is not to be used.
5. Use only qualified adapters and connectors, In case of wear they are to be replaced immediately.
6. Only use air pipes that are fit for the use at maximum pressure.

Maintenance instruction:

1. Dry the filter (fig1) and the air inlet of the tool.
2. Lubricate the quick connect coupling to prevent blocking.
3. Air tool require lubrication throughout the life of the tool. The air motor and bearing uses compressed air to start the tool. The moisture in compressed air will rust the air motor; you must lubricate the motor daily.
4. Avoid storing the tool in a location subject to high humidity. If the tool is left as it is used, the residual moisture inside the tool can cause rust.
5. Before storage, lubricate tool and run it for a few seconds.
6. Regular inspection of spindles, threads, and clamping devices in respect of wear and tolerances for location of abrasive products.
7. If the tool is too seriously damage to be used anymore, recycle raw material instead of disposing as waste. The machine, accessories and packaging should be sorted for environmental-friendly recycling. Check with your local authority or retailer for recycling advice.

