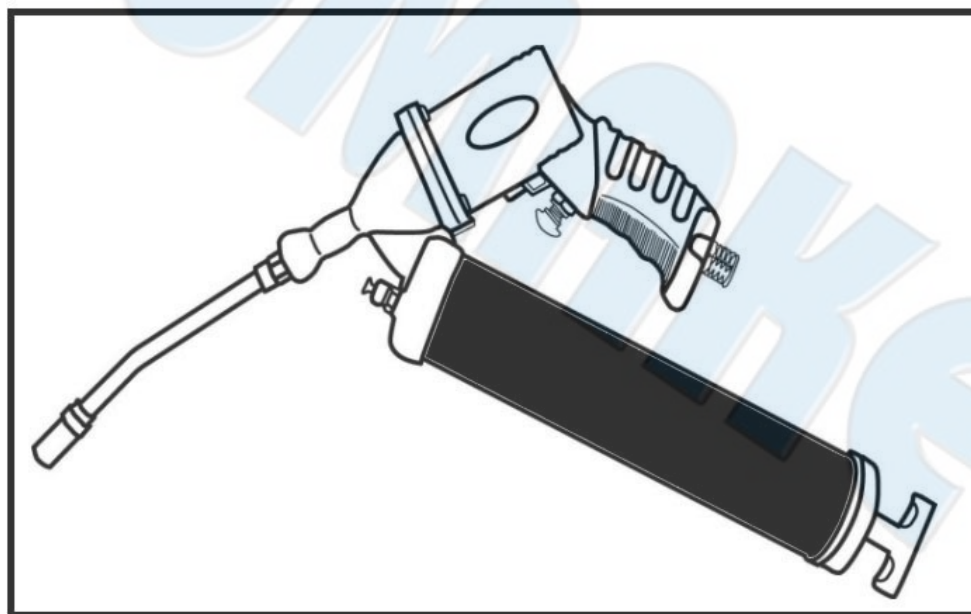




SUMAKE PNEUMATIC TOOLS



Continuous Air Grease Gun (400cc) With 10" Flexible Hose & Metal Bend Spout -Composite Housing ST-C630CA

Specification:

Capacity	Carttridge 14 OZ
	Bulk 400 c.c.
Size	L 410 mm x Φ 49 mm
Air Inlet (PT)	1/4" (6.35 mm)
Air Hose (I.D.)	3/8" (10 mm)
Output Pressure	1600 ~ 4000 psi (110 ~ 276 bar)
Working Pressure	40~100 psi (2.8~6.9 bar)
Air Pressure	90 psi (6.3 bar)
Net Weight	3.52 lbs (1.6 kg)

Noise and Vibration:

Vibration EN ISO 20643:2008	Noise EN ISO 15744	Remark
No Load: 5.5 m/s ² Uncertainty K= 1.5 m/s ²	Sound Pressure Level No load: 78.2 dB(A)	Please always wear ear protector at environment noise level > 80 dB(A) due to risk of impaired hearing!
	Sound power level No load: 89.2 dB(A)	
	Uncertainty K= 3dB	

SUMAKE INDUSTRIAL CO., LTD

4F,NO.351,Yanguang St.,Neihu District TAIPEI, TAIWAN, ZIP:114-91

ST-C630CA-S-2303C-KCF



EC DECLARATION OF CONFORMITY

We: **SUMAKE INDUSTRIAL CO., LTD.**

4F, No. 351, Yangguang St., Neihu District, Taipei City, Taiwan

declare in sole responsibility that the equipment

Equipment : **CONTINUOUS AIR GREASE GUN (400cc), COMPOSITE HOUSING**

Model/ Serial No. : **ST-C630CA**

to which this declaration applies, complies with these normative documents:

- Machinery Directive: 2006/42/EC

and conforms to the following EN standard,

- EN ISO 12100: 2010
- EN 1953: 2013

Name and Signature/Position

Mike Su – Managing Director

Date and Place

2022/12/1

Taipei, Taiwan

ST-C630CA-D-2303D-KCF

INSTRUCTIONS FOR CONTINUOUS OPERATED AIR GREASE GUN

FOLLOW THESE STEPS CAREFULLY BEFORE USING THIS GUN

The pistol-style, Continuous Operated Air Grease Gun is a specially designed, high quality and professional air tool, made of the best materials and ideal for lubricating maintenance for transportation implements, agricultural machinery and industrial equipment etc.

FEATURES & FUNCTIONS

- Epochal, innovative achievement for constructional improvement designed facility.
- Fully automatic, cycles continuous grease flow with trigger depressed.
- Exclusive air piston design assures consistent priming.
- Heavy duty spring for prime retention.
- Specially ergonomics designed elegant style high quality and professional pneumatic tool. Ideal for machine, automobiles, farm and garden equipments, recreation vehicles etc.
- Heavy duty construction acute-angle featured for reduces the load distance and concentrates the center of gravity between finger grip and container tube, it is portable in operation and arm not subject to be tired. It is allow wide-angle operation in narrow space and optional clearance for air supply.
- Round plug equipped for grease loading which from grease dispenser or bucket pump.
- Rugged grip for convenient of holding and operation.
- Fine-treated surface include chrome-plated and oven-painting.
- Special designed follower to eliminate grease by-pass.
- High pressure performance with 60 to 150 psi pressure air generated from the air compressor supplied into the air inlet, it can deliver 2400 to 6000 psi when trigger pressed. (40:1 pressure ratio)
- Recommended working pressure air source: 90 psi (6.2 bar)
- 3 ways loading available:
 - Grease cartridge loading
 - Dispenser loading
 - Bulk loading.
- Trigger should be pressed thoroughly during operation.
- Add oil daily through air fitting before use.
- If your gun fails to work, it is due to air packets in the gun. To remove the air, unscrew the gun head 1 to 1-1/2 turns and acted as follow:
 - ◆ Draw back plunger rod fully and release quickly. Repeat several times. This will help exert force to move the rubber ring to enter the cartridge which is essential for a grease gun to work. Push plunger rod all the way in. Tighten the head to the barrel.
 - ◆ Now your grease gun is ready to use.

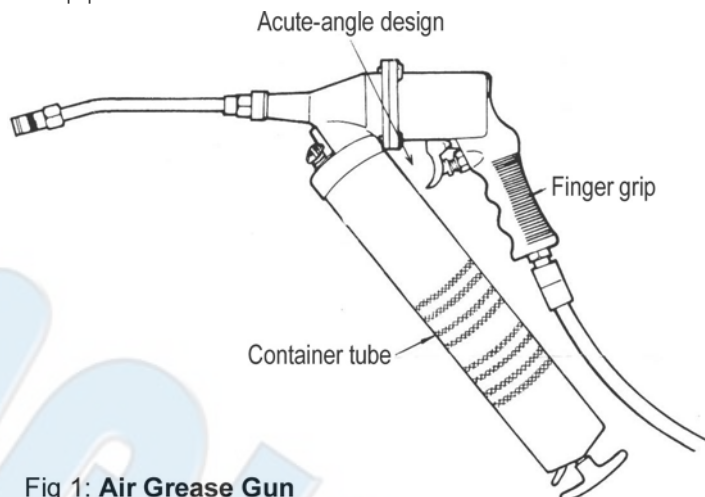


Fig 1: Air Grease Gun

IMPORTANT:

1. If the way of Cartridge loading to be used, it could be cause Rubber Plunger transfigure and contract by squeezed long time which in inside of grease cartridge, and by soak of grease a certain period.
2. At this moment, if change the loading way to Dispenser loading or Bulk loading, and then, there is a normal phenomenon that have a little amount grease is possible seep out from the bottom of Container Tube.
3. In order to avoid the above phenomenon happened, please decide use long period and a proper loading way initially (depends on the variety of grease that your local supplier applied) and use if incessantly.
(Do no use MULTI-LOADING alternately!!)
4. And now, puzzle of grease leakage been settled.

INSTRUCTIONS FOR THE 3-WAY LOADING CARTRIDGE LOADING (See Fig. 2)

- (a) Remove the gun head from the container tube.
- (b) Draw back the plunger handle entirely.
- (c) Insert open end of cartridge into container tube and push all the way in. Remove the seal or pull tab end from the cartridge.
- (d) Reassemble the gun head to the container tube. Press the catch plate and release the piston rod. Pull down the plunger handle.

LOADING WITH FILLER PUMP (See Fig. 3)

- (a) Draw back the plunger handle entirely.
- (b) Unscrew the round plug. Insert filler spout from the filler pump.
- (c) Operate the filler pump to fill the container tube.
- (d) Disconnect the grease gun from the filler pump.
- (e) Press the catch plate and release the piston rod. Pull down the plunger handle.

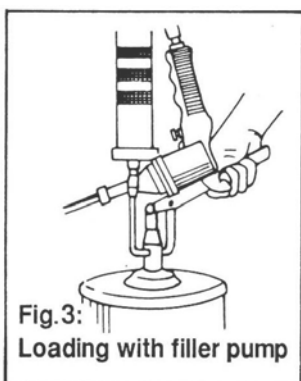
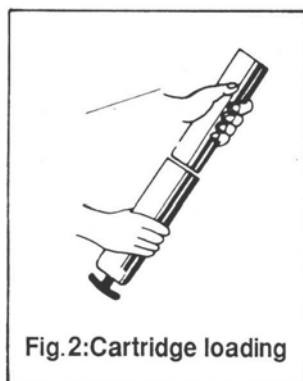
BULK FILLING (See Fig.4)

- (a) Remove the gun head from the container tube.
- (b) Draw back the plunger handle entirely. Fill bulk grease into empty container tube.
- (c) Reassemble the gun head to the container tube. Press the catch plate and release the piston rod. Pull down the plunger handle.

Now your grease gun is ready to use.

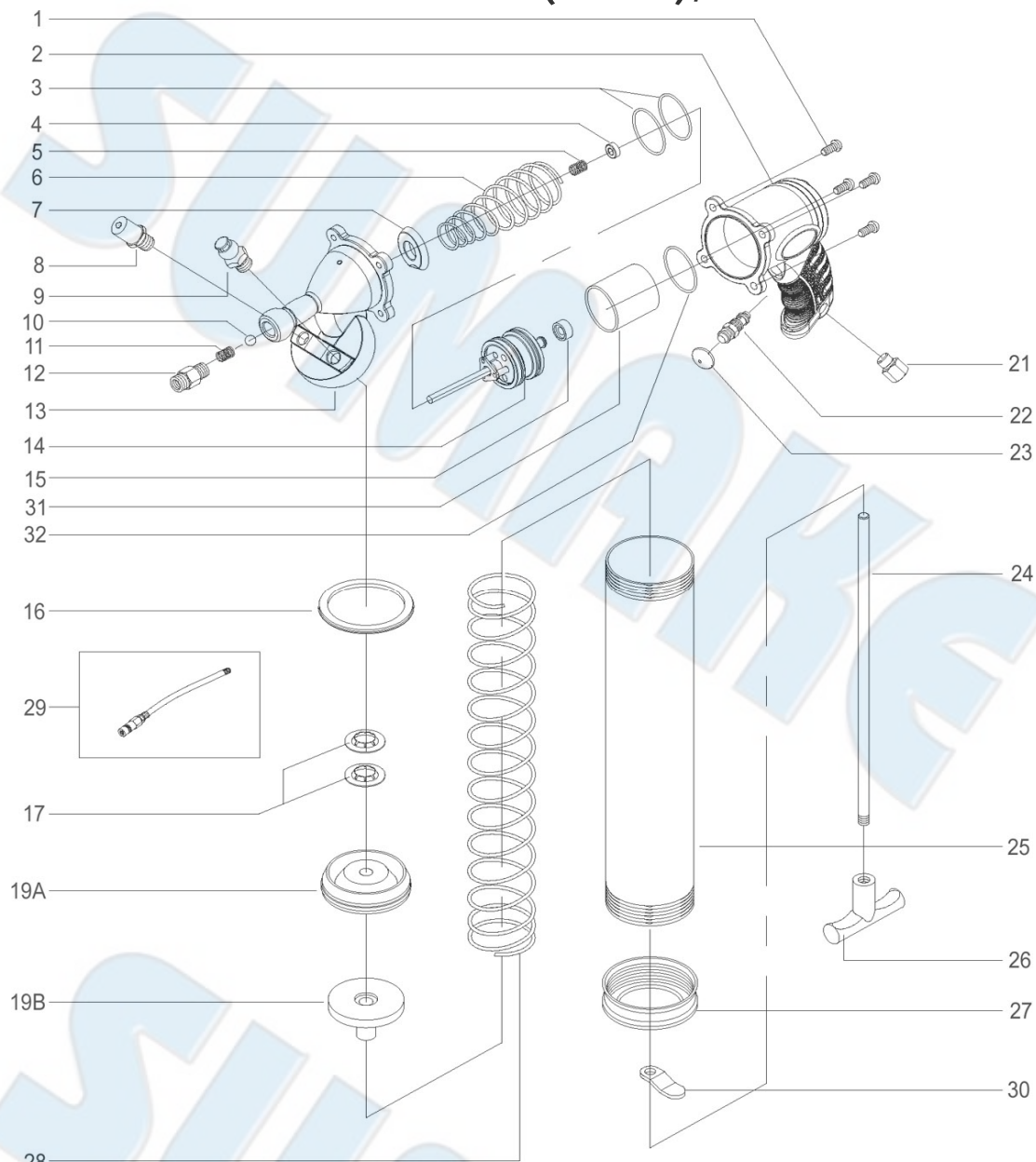
*Trigger should be pressed thoroughly during operation.

*Oil before use and daily thru Air Fitting.



ST-C630CA

CONTINUOUS AIR GREASE GUN (400cc), COMPOSITE HOUSING



PARTS LIST

No.	Parts No.	Description	Q'ty
1	C630CA-01	Screw	4
2	C630CA-02	Finger Grip	1
3	C630CA-03	O-Ring	2
4	C630CA-04	Bump	1
5	C630CA-05	Spring	1
6	C630CA-06	Spring	1
7	C630CA-07	Gasket	1
8	C630CA-08	Filler Plug	1
9	C630CA-09	Air Vent Valve	1
10	C630CA-10	Ball	1
11	C630CA-11	Spring	1
12	C630CA-12	Adapter	1
13	C630CA-13	Housing Cap	1
14	C630CA-14	Piston Set	1
15	C630CA-15	Rubber Valve	1
16	C630CA-16	Gasket	1

No.	Parts No.	Description	Q'ty
17	C630CA-17	Quick Nut	2
19A	C630CA-19A	Plunger	1
19B	C630CA-19B	Plunger Gasket	1
21	C630CA-21	Air Inlet	1
22	C630CA-22	Switch	1
23	C630CA-23	Trigger	1
24	C630CA-24	Piston Rod	1
25	C630CA-25	Container Tube	1
26	C630CA-26	Handle	1
27	C630CA-27	End Cap	1
28	C630CA-28	Long Spring	1
29	C630CA-29	Hex Spout	1
30	C630CA-30	Locking Plate	1
31	C630CA-31	Cylinder Sleeve	1
32	C630CA-32	O-Ring	1