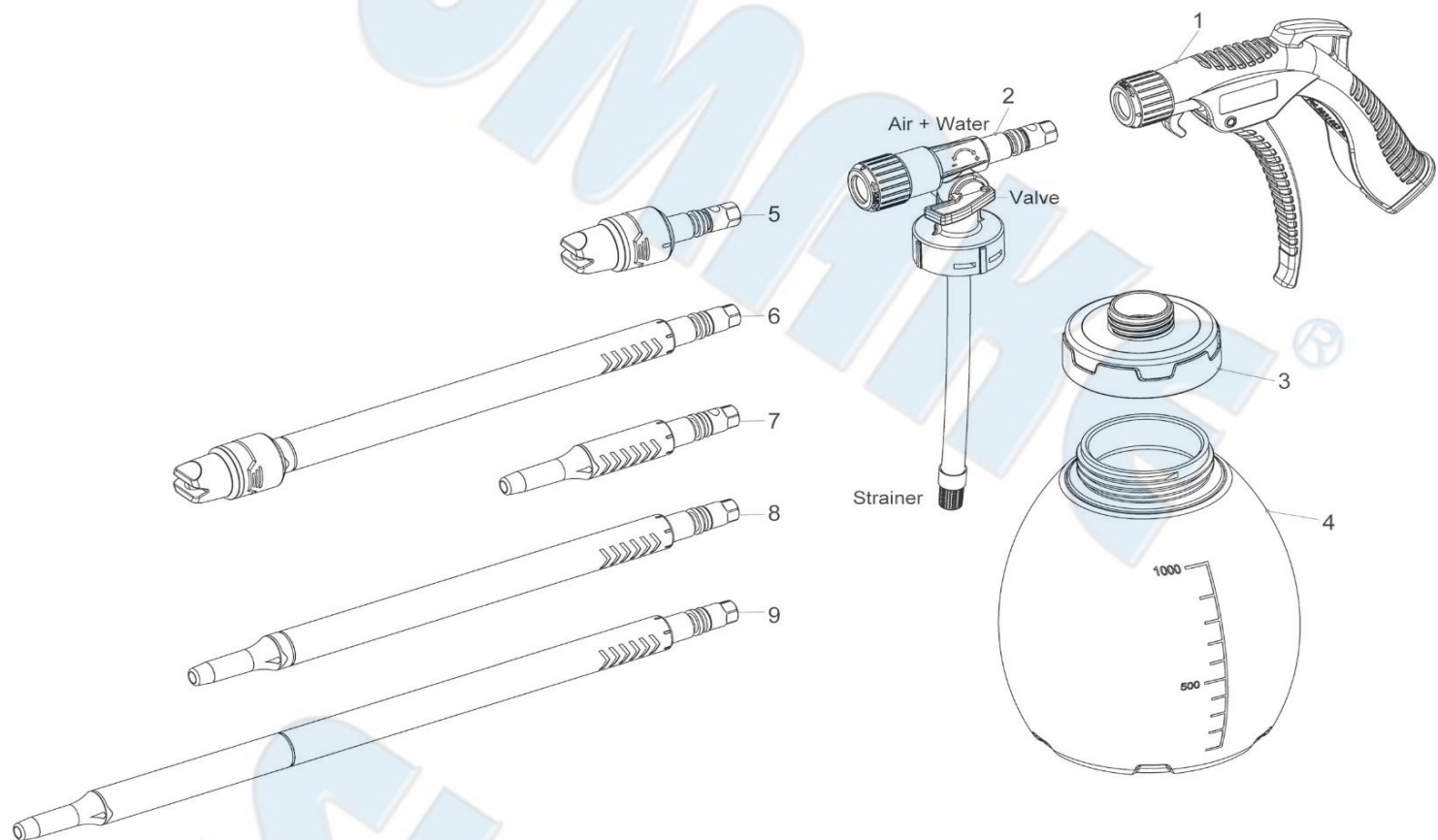


SA-CL300-K

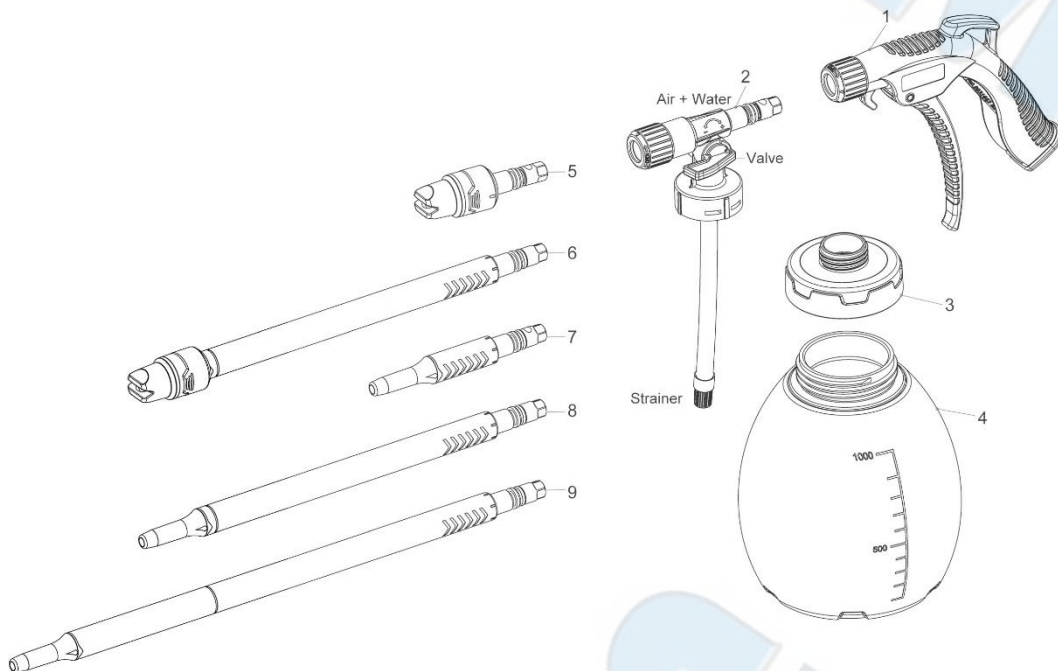
AIR CLEANING GUN



PARTS LIST

No.	Parts No.	Description	Q'ty
1	CL300-01	Air Blow Gun	1
2	CL300-02	Gun Body Set	1
3	CL300-03	Bottle Lid	1
4	CL300-04	1000ml PE Bottle	1
5	CL300-45	L45 Foam Jet Nozzle	1
6	CL300-330	L330 Foam Jet Nozzle	1
7	CL300-115	L115 Straight Nozzles	1
8	CL300-235	L235 Straight Nozzles	1
9	CL300-320	L320 Straight Nozzles	1

SA-CL300-K AIR CLEANING GUN



- Interchangeable air cleaning gun with Quick Release knob, change nozzle easily
- Ideal for degreasing, washing and shampooing.
- Available for alcohol and most of the aggressive chemicals, EXCEPT TOLUENE
- As an air blow gun while closing the valve
- As an clean gun while opening the valve
- As an foam gun while attaching the foam jet nozzle and opening the valve
- With CL300-45(L45), CL300-330(L330) foam jet nozzles, NY+GF
- With CL300-115(L115), CL300-235(L235), CL300-320(L320) straight nozzles, NY+GF
- Full range trigger control
- 1000ml bottle with $\phi 9.5\text{mm} \times L250\text{mm}$ hose
- **Warning: Avoid Fall Off When Full With Water
- Available for PET bottle (OD27.4, pitch 3mm), Weight 600ml MAX.

SPECIFICATION:

- Body: NY+GF
- Trigger: POM
- Air Inlet: Brass Nut
- Bottle & Hose: PE
- Working Pressure: 110psi
- Air Inlet Thread: 1/4"

No.	Parts No.	Description
1	CL300-01	Interchangeable gun body with Quick Release Knob Assemble with clean kit to use as an air clean gun Unassemble to use as an air blow gun separately
2	CL300-02	Clean kit with Quick Release Knob, change nozzle easily Valve for switching Air or Water/Foam mode Small lid available for PET bottle (OD27.4, pitch 3mm), Weight 600ml MAX. With $\phi 9.5\text{mm} \times L250\text{mm}$ PE hose Removable strainer at end of hose, no dirt comes into the hose and gets into the cleaning kit.
3	CL300-03	Bottle Lid
4	CL300-04	1000ml PE Bottle
5	CL300-45	L45 Foam Jet Nozzle
6	CL300-330	L330 Foam Jet Nozzle
7	CL300-115	L115 Straight Nozzles
8	CL300-235	L235 Straight Nozzles
9	CL300-320	L320 Straight Nozzles

