

ITEM NO.: **SA-CL110**

FOAM GUN WITH BOTTLE 1 LITER

Operating Instructions:

1. Turn the black control switch (N°8) into the vertical position to activate the (cleaning) liquid in the bottle.
2. Press the "trigger" all the way to apply foam to the surface completely.
3. Leave the cleaner a little bit of time on the surface but take care it will not become touch dry.
4. Afterwards rinse the surface with water.

Care and maintenance:

Please flush the head by filling the bottle with regular water and pressing the trigger for a while. With this procedure you will flush out the used cleaner and also avoid the gaskets and filters drying out when the item is not use. Afterward turn the black control switch (N° 8) into the horizontal "air only" position and press the trigger to remove any remaining moisture out of the head.

Required air rate:

To perform to its full potential, the Foam Gun requires a constant air pressure of 6,3 ~ 7 bar.

Cautions: Constant air rates vary depending on the size and power of the compressor. Always make sure that tank and air hoses are free of impurities of any kind.

You must observe the following points in the interest of your own safety!!!

Instruction manual

You must observe the following points in the interest of your own safety!!!

Safety instructions:

1. When working with the Foam Booster, please wear protective goggles to prevent eye injuries.
2. Only use the Foam Booster in ventilated spaces.
3. Never operate the Foam Booster with more than 8 bar.
4. Do not use cleaning agents which are acidic, alkali and/or inflammable.
5. When using cleaning fluids which need to be diluted, always strictly observe the manufacturer's instructions.
6. To prevent health hazards from inhalation, wear appropriate respiratory protection.
7. Never point the Foam Booster towards the face or body.
8. Keep the Foam Booster out of the reach of children.

We recommend you never clean any safety-related components, e.g. safety belts, electrical or electronic modules, with the Foam Booster.

Special instructions:

The written and spoken information and recommendations which we provide to support the purchaser/user, are the result of previous experience and the latest findings. Because of the manifold possibilities for use and processing conditions, this information is without obligation and do not constitute a contractual legal relationship or any supplementary obligation of the sales contract. In any event, the purchaser holds responsibility for checking suitability for the intended use himself. Always read the safety warnings for cleaning liquids and contact the manufacturer in case of doubt.

Our liability and responsibility is based exclusively on our general terms and conditions of business and are not expanded on by either this information or the technical advice of our technical field staff.





EC DECLARATION OF CONFORMITY

We: **SUMAKE INDUSTRIAL CO., LTD.**

4F, No. 351, Yangguang St., Neihu District, Taipei City, Taiwan

declare in sole responsibility that the equipment

Equipment : **FOAM GUN WITH BOTTLE 1 LITER**

Model/ Serial No. : **SA-CL110**

to which this declaration applies, complies with these normative documents:

- Machinery Directive: 2006/42/EC

and conforms to the following EN standard,

- EN ISO 12100: 2010
- EN 1953: 2013

Name and Signature/Position



Mike Su - Managing Director

Date and Place

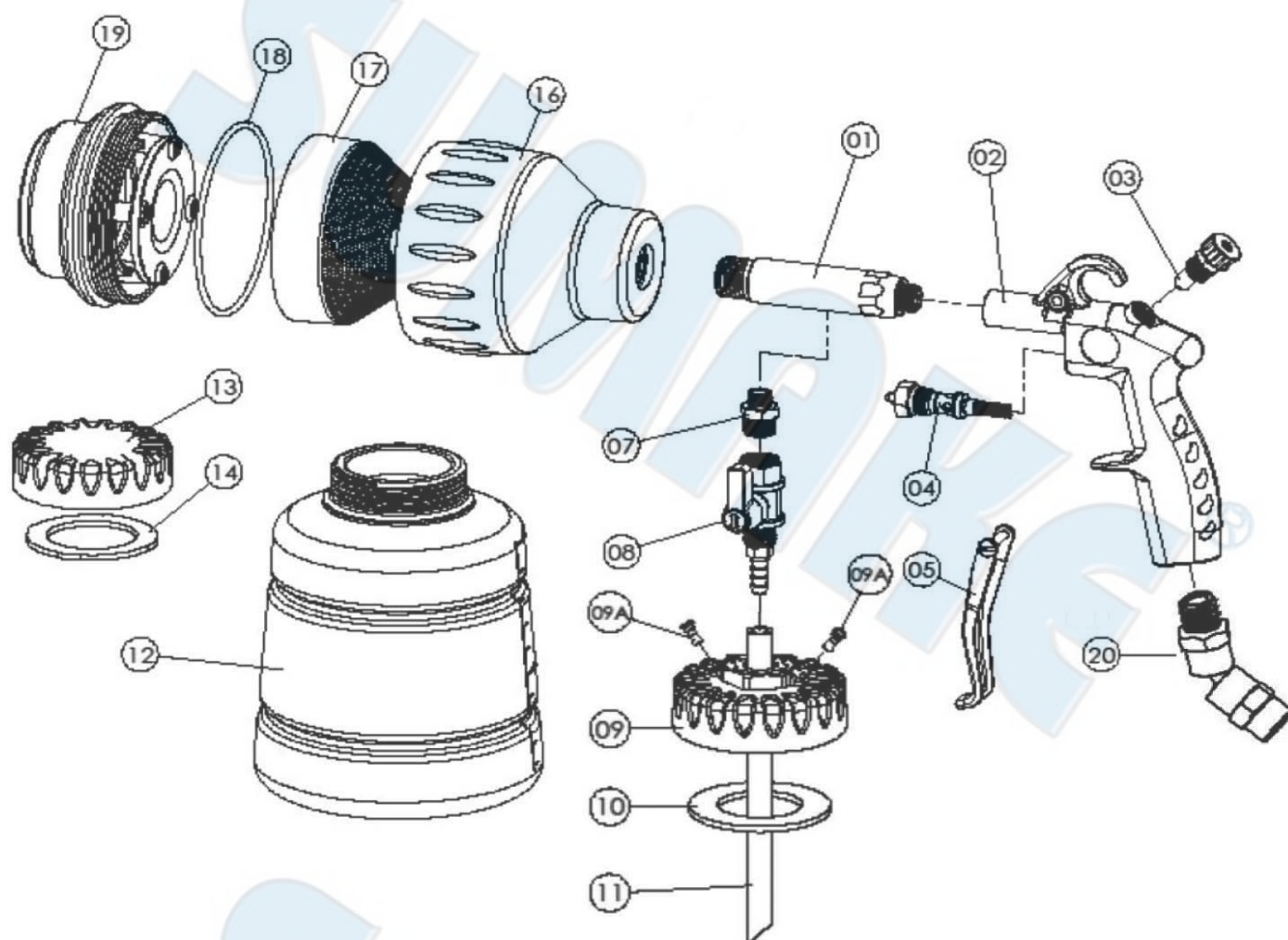
2022/12/1

Taipei, Taiwan

SA-CL110-D-2301B-WHF

SA-CL110

FOAM GUN WITH BOTTLE 1 LITER



PARTS LIST

No.	Parts No.	Description	Q'ty
1	SACL110-01	Aluminum Hose Set	1
2	SACL110-02	Gun Body	1
3	SACL110-03	Air Regulator Set	1
4	SACL110-04	Valve Set	1
5	SACL110-05	Trigger Set	1
7	SACL110-07	Screw	1
8	SACL110-08	Reverse Valve Set	1
9	SACL110-09	Cap Set [Incl. 9A(2)]	1
9A	SACL110-09A	Check Valve	2
10	SACL110-10	Gasket For Cap Set	1
11	SACL110-11	Tube	1
12	SACL110-12	Cup	1
13	SACL110-13	Cap	1
14	SACL110-14	Gasket For Cap	1
16	SACL110-16	Foam Head	1
17	SACL110-17	Sponge	1
18	SACL110-18	O-Ring	1
19	SACL110-19	Sprinkle Nozzle	1
20	SACL110-20	Air Inlet Set	1

NOTE

SUMAKE®

SUMAKE®