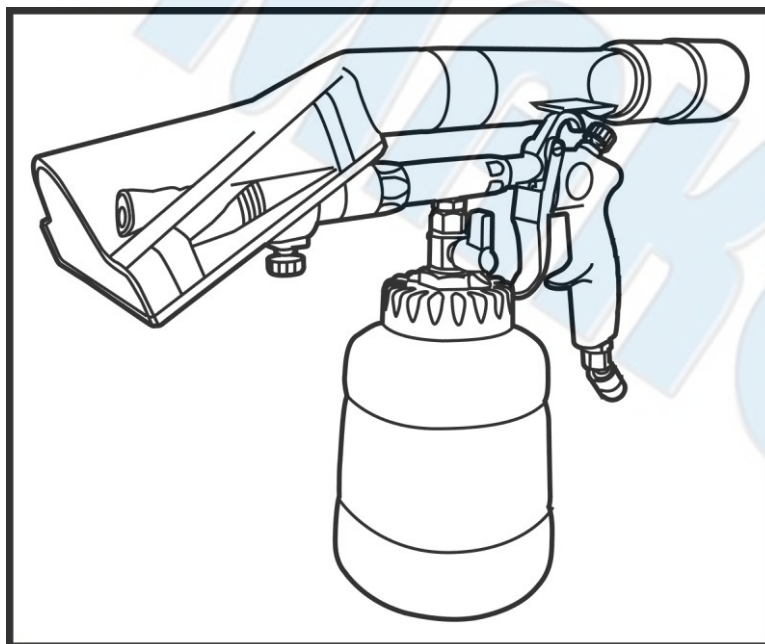




SUMAKE PNEUMATIC TOOLS



Air Twister Cleaning Gun SA-CL100-B

Specification:

Free Speed	8,000 r/min
Capacity Of Cup	1 L
Size(LxWxH)	360x120x275mm
Air Consumption	10 CFM (283 L/min)
Air Inlet (NPS)	1/4" (6.35 mm)
Air Hose (NPS)	1/4" (6.35 mm)
Air Pressure	4 ~ 6.3 Bar
Net Weight	2.64 lbs (1.2 kg)

Noise and Vibration:

Vibration	Noise	Remark
1.44 m/s ² Uncertainty K= 1.5 m/s ²	Sound Pressure Level : 91.5 dB(A)	Please always wear ear protector at environment noise level > 80 dB(A) due to risk of impaired hearing!
	Sound power level : 102.5 dB(A)	
	Uncertainty K= 3dB	

SUMAKE INDUSTRIAL CO., LTD

4F,NO.351,Yanguang St.,Neihu District TAIPEI, TAIWAN, ZIP:114-91

SA-CL100-B-S-2301A-WHF



EC DECLARATION OF CONFORMITY

We: **SUMAKE INDUSTRIAL CO., LTD.**

4F, No. 351, Yangguang St., Neihu District, Taipei City, Taiwan

declare in sole responsibility that the equipment

Equipment : **AIR TWISTER CLEANING GUN**

Model/ Serial No. : **SA-CL100-B**

to which this declaration applies, complies with these normative documents:

- Machinery Directive: 2006/42/EC

and conforms to the following EN standard,

- EN ISO 12100: 2010
- EN 1953: 2013

Name and Signature/Position

Mike Su – Managing Director

Date and Place

2022/12/1

Taipei, Taiwan

SA-CL100-B-D-2301A-WHF

Application:

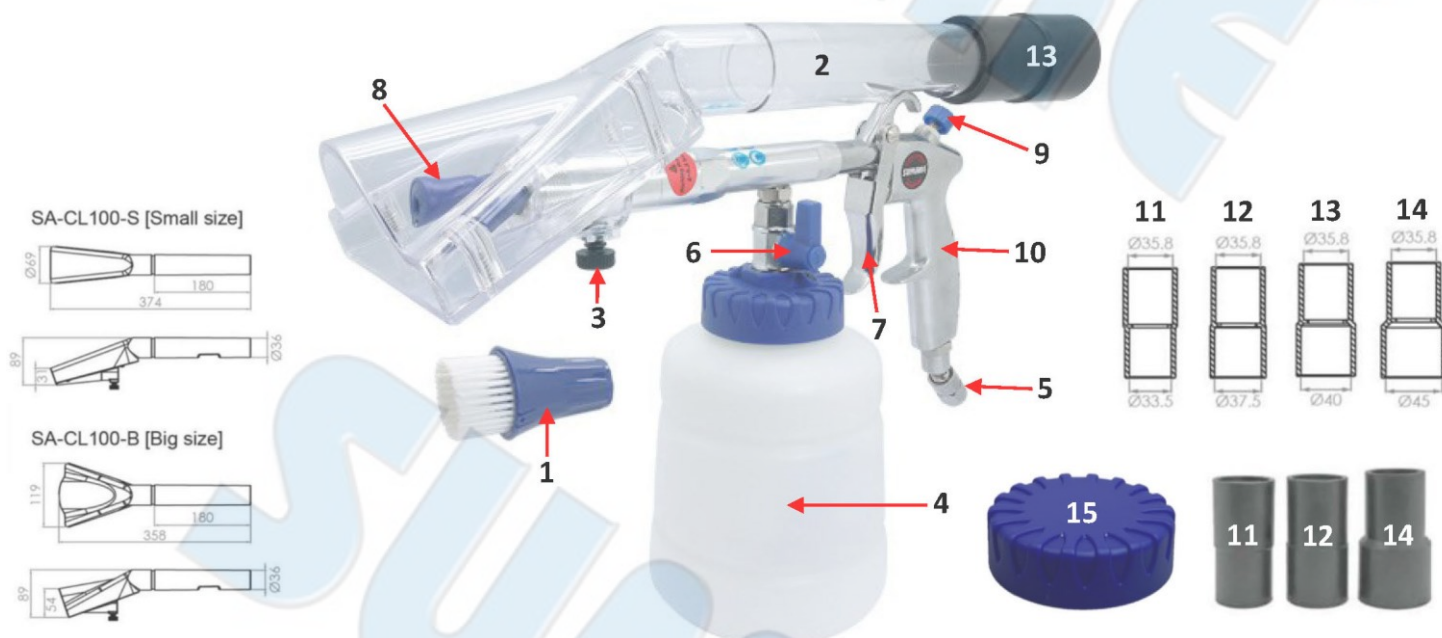
Exceptionally versatile tool for cleaning surfaces such as car carpets, seat covers, wool/leather car upholstery, carpets, floormat, wheels...etc.

Install the suction attachment.

Attention: disconnect the tool from the compressed air source before install accessories or fill with liquid.

Proceed as follows for the conversion:

1. Remove the blue brush (1).
2. Install the suction attachment (2) on the front tube of the cleaning gun.
3. Tighten screw (3) to fix the suction attachment (2) to the cleaning gun.
4. Select one of the four possible suitable hose adapters (11-12-13-14). The hose adapter serves to connect the suction hose to the cleaning gun.
5. Disassemble the container (4) from the cleaning gun.
6. Fill the container (4) with suitable cleaning agent.
7. Fix the container (4) back onto the cleaning gun.
8. Connect the air inlet set (5) of the cleaning gun to the compressed air source.
9. Turn on the reverse valve (6).
10. Press the trigger (7) and move the suction nozzle (8) of the suction attachment (2) with a distance of max 1 to 3 cm and an angle of approx. 45° over the surface to be cleaned. Turn the pressure regulator (9) to set the best spray jet.
11. After finishing work, disassemble the cleaning agent container (4) from the cleaning gun and seal the container (4) with the cover (15).



SHUT-OFF VALVE

Valve in vertical position: OPEN

Cleaning agent comes through a rotating air hose and creates twist spray effect that cleans away dirty surfaces as a vacuum cleaner.



Valve in horizontal position: CLOSED

The cleaning gun will generate strong air flow for a quick blow-dry to wet surfaces.



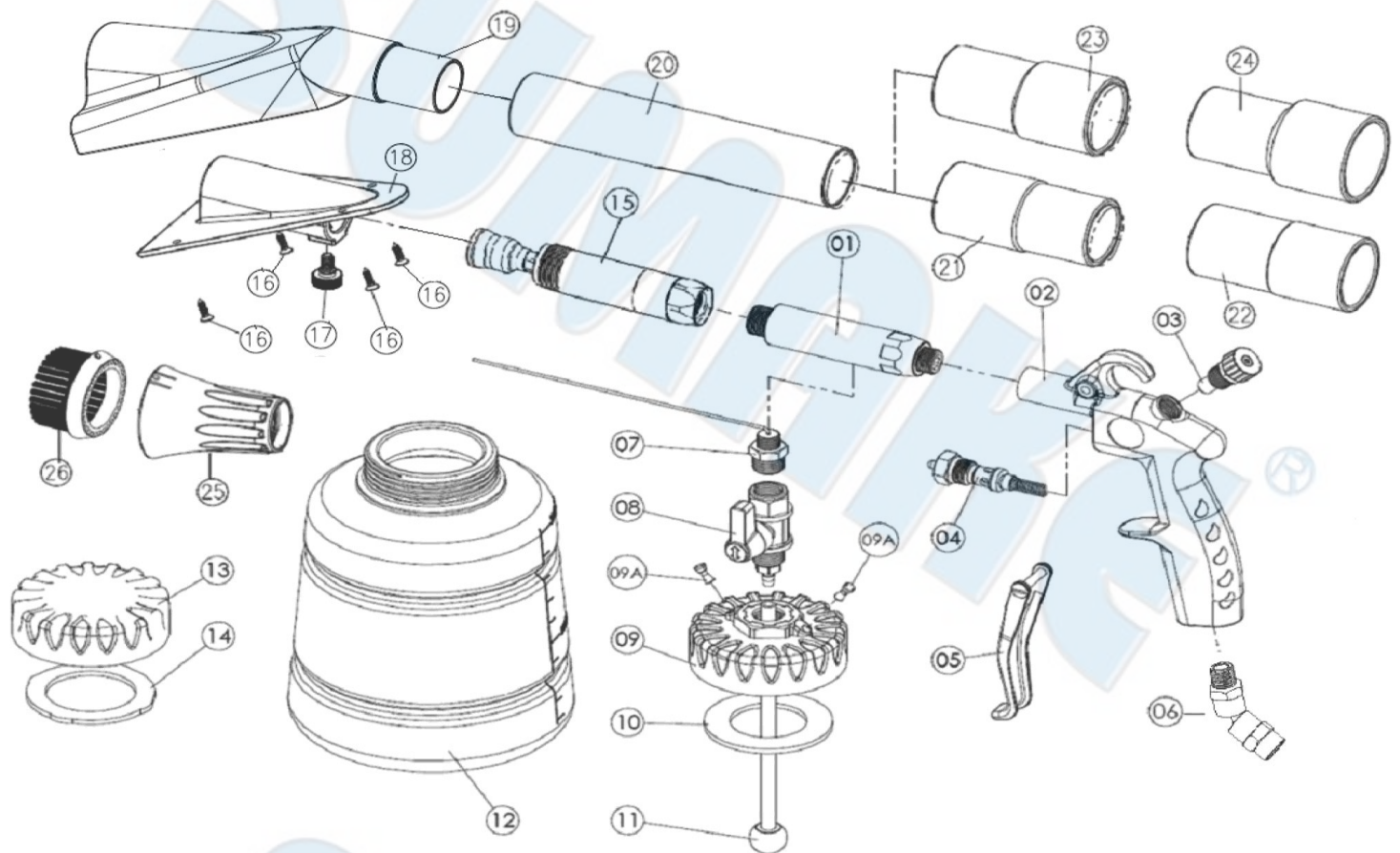
Maintenance

Attention: Always turn off Reverse Valve (in horizontal position) after every use, let the strong air flow clean up the Teflon tube inside Rotatable Valve set (15) to avoid jamming.

SA-CL100-B(S)-I-2302A-WH

SA-CL100-B

AIR TWISTER CLEANING GUN



PARTS LIST

No.	Parts No.	Description	Q'ty	No.	Parts No.	Description	Q'ty
1	CL100-01	Aluminum Hose Set	1	14	CL100-14	Gasket For Cap	1
2	CL100-02	Gun Body	1	15	CL100-15	Rotatable Set	1
3	CL100-03	Air Regulator Set	1	16	CL100-16	Screw	4
4	CL100-04	Valve Set	1	17	CL100-17	Set Screw	1
5	CL100-05	Trigger Set	1	18	CL100-B-18	Dust Cover With Guard	1
6	CL100-06	Air Inlet Set	1	19	CL100-B-19	Body For Dust	1
7	CL100-07	Inner Tube Set	1	20	CL100-20	Connect Pipe	1
8	CL100-08	Reverse Valve Set	1	21	CL100-21	Rubber (35.8x33.5)	1
9	CL100-09	Cap Set	1	22	CL100-22	Rubber (35.8x37.5)	1
9A	CL100-09A	Check Valve	2	23	CL100-23	Rubber (35.8x40.0)	1
10	CL100-10	Gasket For Cap Set	1	24	CL100-24	Rubber (35.8x45.0)	1
11	CL100-11	Bushing Set	1	25	CL100-25	Nozzle	1
12	CL100-12	Cup (1 Liter)	1	26	CL100-26	Brush Set	1
13	CL100-13	Cap	1				