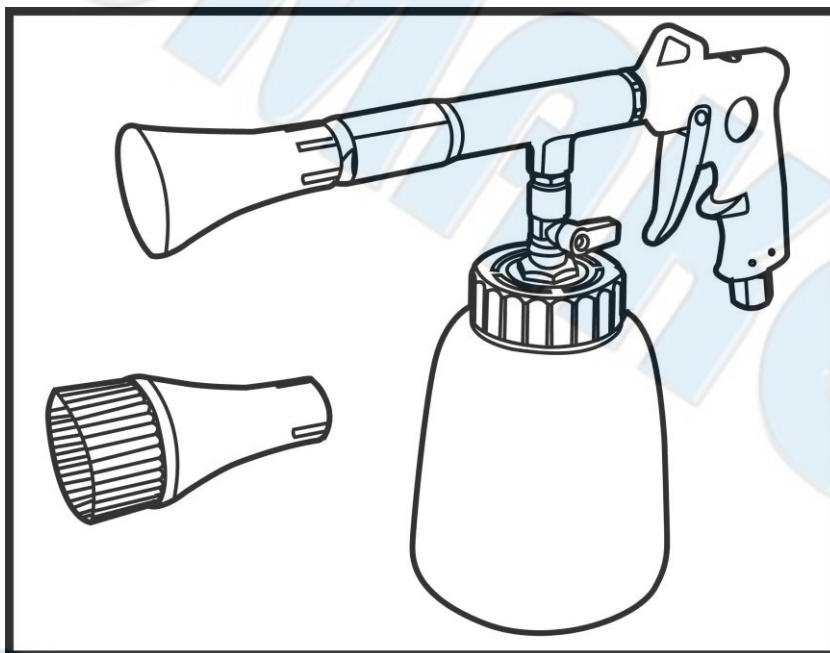




SUMAKE *PNEUMATIC TOOLS*



Air Twister Cleaning Gun W/plastic cup & brush nozzle SA-4012MA

Specification:

Free Speed	4,000-8,000 r/min
Capacity	1000 cc
Overall Length	12.5"(320mm)
Air Consumption	12 CFM (340 L/min)
Air Inlet (PT)	1/4" (6.35 mm)
Air Hose (I.D.)	1/4" (6.35 mm)
Air Pressure	50-115 psi (3.5-8 kg/cm ²)
Net Weight	1.5 lbs (0.68 kg)

Noise and Vibration:

Vibration EN ISO 20643:2008	Noise EN ISO 15744	Remark
Load: 2.49 m/s ² Uncertainty K= 1.5 m/s ²	Sound Pressure Level : 95 dB(A)	Please always wear ear protector at environment noise level > 80 dB(A) due to risk of impaired hearing!
	Sound power level : 106 dB(A)	
	Uncertainty K= 3dB	

SUMAKE INDUSTRIAL CO., LTD

4F,NO.351,Yangguang St.,Neihu District TAIPEI, TAIWAN, ZIP:114-91

SA-4012MA-S-2005B-G2F

INSTRUCTION MANUAL

ITEM NO.: SA-4012M, SA-4012MA
AIR TWISTER CLEANING GUN
(W/ MOTOR)



SA-4012M



SA-4012MA

Instruction manual

Please read this manual thoroughly before using the tools and store in a safe place for quick and easy reference at all times.

Incorrect use of this device or actions non conform to the Directive can cause serious injuries. To be used only by qualified personnel.

You must observe the following points in the interest of your own safety!!!

Safety instructions:

1. The tool causes considerable noise pressure. Please wear hearing protection in order to avoid noise which can be Damaging to your health.
2. When working with the tools, small parts may be whirled into the air: Wear protective goggles to prevent eye injuries. Also take care that the people around you are sufficiently protected.
3. Only use the tools in ventilated spaces.
4. Never operate the tools with more than 8.5 bar.
5. Do not use cleaning agents which are acidic, alkali and/or inflammable. We recommend the use of neutral cleaning agents.
6. When using cleaning fluids which need to be diluted, always strictly observe the manufacturer's instructions to make sure. The mixture is correct.
7. The tools nebulizers the cleaning liquid very finely. To prevent health hazards from inhalation, wear appropriate Respiratory protection.
8. Long hair or clothes can get tangled in the rotating tube in the nozzle and cause serious injuries.
9. **Never** point the tools towards the face or body.
10. When your tools doesn't work anymore, **turn off** the device **immediately** and take it to a qualified service engineer.
11. Before you replace parts, cut off the connection to the compressed air supply, so you accidentally don't set the tools to Work.
12. Keep the tools out of the reach of children.

We recommend you never clean any safety-related components, e.g. safety belts, electrical or electronic modules, with the tools.

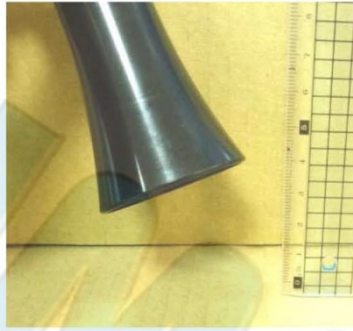


Hearing, eye protection, a dust mask, head and hand protection must be worn. The complete reading of this manual is recommended in order to familiarize yourself with the functions and operations of the tools before using it.

Operating instructions:

1. Remove loose dirt from the surface you wish to clean (brush or vacuum clean).
2. Connect the tools to a compressor. Check the condition of the couplings and hose before using the tools Cleaning Gun.

3. Turn the black rocker lever into the vertical position to activate the (cleaning) liquid in the bottle.
4. Important: Hold the cleaning spout at a distance of 3 cm from the surface you are cleaning.



5. Press the "trigger" all the way; move the tools slowly in circular motions over the surface you are cleaning.
6. Turn the black rocker lever into the horizontal "air only" position, press the trigger and dry the surface you have cleaned.

CARE AND MAINTENANCE

1. Clean the tools after each usage.
2. Always remove the detergent after use and operate the tool with water again to prevent chemical residues.
3. To remove any remaining moisture, wipe the cleaned surface with a dry cloth.
4. Clean the spout as follows: Turn the black rocker lever to the horizontal "air only" position, hold the cleaning nozzle in a empty bucket and press the trigger all the way in order to remove any soiling from the nozzle.
5. Every day spray a small amount of lubricant in the nozzle outlet and also in the air inlet.

REQUIRED AIR RATE

To perform to its full potential, the tools requires a constant air pressure of 8 bar.

CAUTION: Constant air rates vary depending on the size and power of the compressor.

Always make sure that the tank and the air hoses are free from impurities of any kind.

General instructions:

The written and spoken information and recommendations which we provide to support the purchaser/user, are the result of previous experience and the latest findings. Because of the manifold possibilities of use and work conditions, this information is without obligation and does not constitute a contractual legal relationship or any supplementary obligations of the sales contract. In any event, the purchaser is solely responsible for checking the suitability of the intended use. Always read the safety warnings for cleaning liquids and contact the manufacturer in case of doubt. Our liability and responsibility is based exclusively on our general terms and conditions of business and are not expanded on by either this information or the technical advice of our technical field staff.

Technical data:

Working pressure: 6 to 8 bar

Air consumption: 310 l/min a 6 bar

Weight : 1 kg

Replacing the Teflon tube

1. Disassemble the nozzle



2 heat the anaerobe adhesive to make it soft.



3. Unscrew it with 23MM spanner.



4. Take them apart.



5 Unscrew the Teflon tube nut with 10MM spanner.



6. Clean the dirt to avoid Teflon tube gets blocked.



7. Wrap new Teflon nut thread with seal tape or seal adhesive.



8. Assemble new Teflon nut.



9. Lock it tight and confirm no leakage



10. Wrap seal tape or seal adhesive on thread of main body.



11. Put Teflon tube through motor body, do not bend it.



12. Lock it tight with 23MM spanner



13. Cut out Teflon tube left out of aluminium tube.

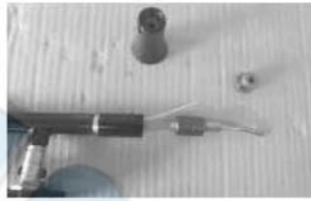


Replacing the aluminium tube

1. Unscrew #3 nut with 23MM spanners.



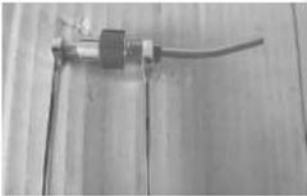
2. Take them apart



3. Disassemble the motor, watch out not to lose the tiny parts.



4. Loose alu. tube with 7MM & 11MM spanners.



5. Put seal adhesive on the thread.



6. Lock the alu. tube back on with 7MM & 11MM spanners



7. Put the rotor blades back, watch out the direction of blades: the curve should face inside and flat face outside.



8. Put the motor assembly back.

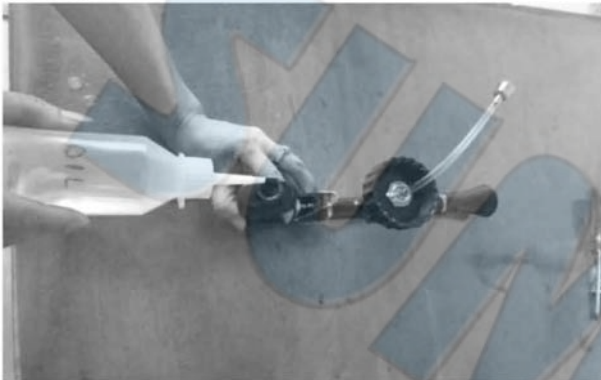


9. Lock the nut tight with 23MM spanners.

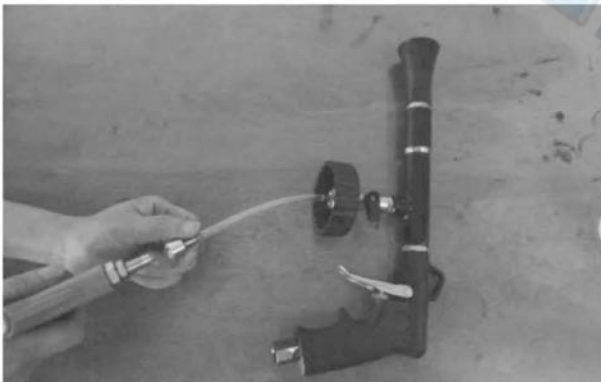


Troubleshooting

1. When the aluminium tube does not rotate, spray some lubricant WD40 or other brand into the air inlet.



2. When Twister does not aspirate any liquid, make sure to switch the valve on and blow air through the filter in the metal of the flexible tube.





EC DECLARATION OF CONFORMITY

We: **SUMAKE INDUSTRIAL CO., LTD.**

4F, No. 351, Yangguang St., Neihu District, Taipei City, Taiwan

declare in sole responsibility that the equipment

Equipment : **AIR TWISTER CLEANING GUN**

Model/ Serial No. : **SA-4012MA**

to which this declaration applies, complies with these normative documents:

- Machinery Directive: 2006/42/EC

and conforms to the following EN standard,

- EN ISO 12100: 2010
- EN 1953: 2013

Name and Signature/Position



Mike Su - Managing Director

Date and Place

2024/5/2

Taipei, Taiwan

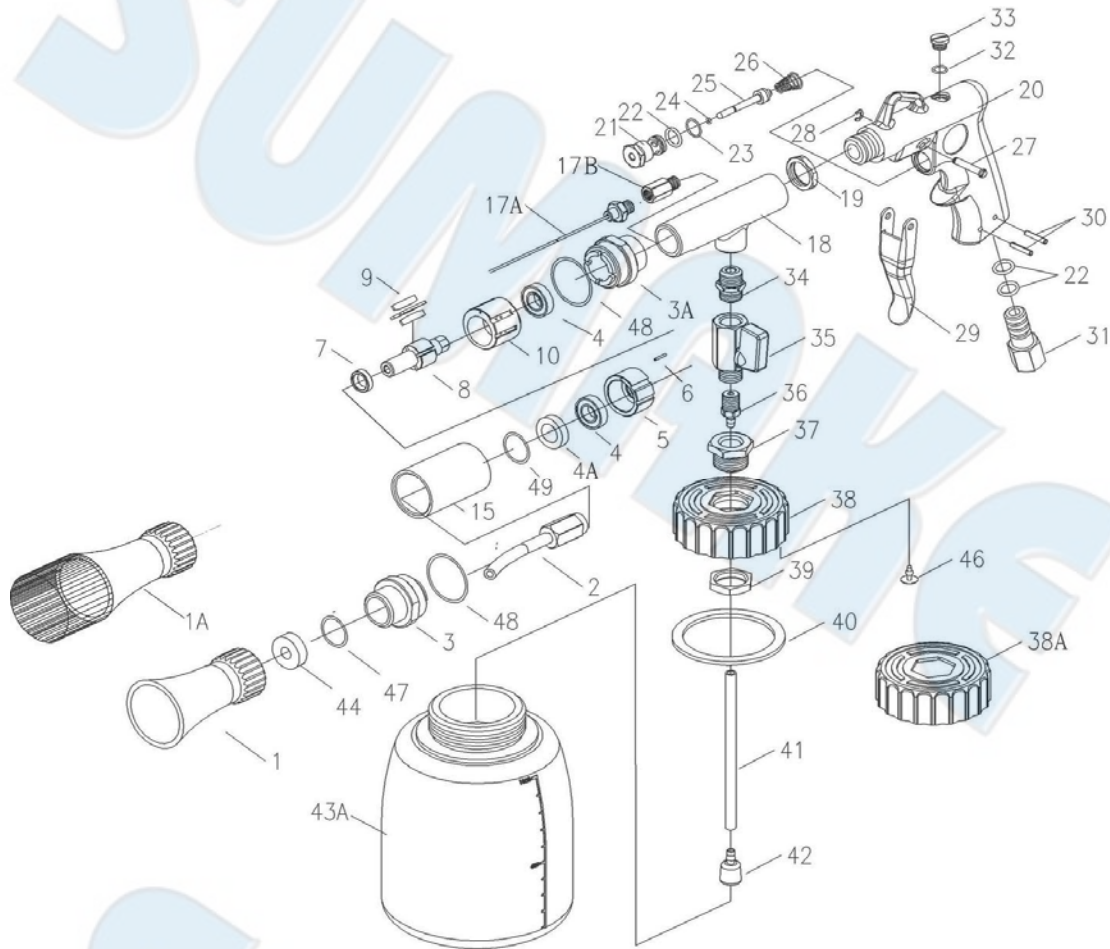
SA-4012MA-D-2406C-G2F

SA-4012M

AIR TWISTER CLEANING GUN (W/ MOTOR) (PLASTIC CUP)

SA-4012MA

AIR TWISTER CLEANING GUN (W/MOTOR) W/PLASTIC CUP & BRUSH NOZZLE



PARTS LIST

No.	Parts No.	Description	Q'ty
1	SA4012-01	Nozzle	1
1A	SA4012-01A	Brush Nozzle [SA-4012MA]	1
2	SA4012-02	Alu. Tube	1
3	SA4012M-03	Lock Nut	1
3A	SA4012M-03A	Lock Nut	1
4	SA4012-04	Bearing (S688ZZ)	2
4A	SA4012-04A	Dust Proof Washer	1
5	SA4012M-05	Front Plate	1
6	SA4012M-06	Pin	1
7	SA4012M-07	Spacer	1
8	SA4012M-08	Rotor	1
9	SA4012M-09	Rotor Blade	4
10	SA4012M-10	Cylinder	1
15	SA4012M-15	Alu. Main Body	1
17A	SA4012-17A	Teflon Kit	1
17B	SA4012-17B	Alu. Screw	1
18	SA4012M-18	Controller Cap	1
19	SA4012-19	Nut	1
20	SA4012-20	Housing	1
21	SA4012-21	Nut	1
22	SA4012-22	O-Ring	3
23	SA4012-23	O-Ring	1
24	SA4012-24	O-Ring	1
25	SA4012-25	Valve Stem	1
26	SA4012-26	Spring	1

No.	Parts No.	Description	Q'ty
27	SA4012-27	Pin	1
28	SA4012-28	E-Ring	1
29	SA4012-29	Trigger	1
30	SA4012-30	Sprin Pin	2
31	SA4012-31A	Air Inlet (PT19)	1
	SA4012-31B	Air Inlet (NPT18)	1
	SA4012-31C	Air Inlet (PS19)	1
32	SA4012-32	O-Ring	1
33	SA4012-33	Screw	1
34	SA4012-34	Screw	1
35	SA4012-35	Switch Valve Set	1
36	SA4012-36	Screw	1
37	SA4012-37	Screw	1
38	SA4012-38	Cap (A Hole)	1
38A	SA4012-38A	Cap (No Hole)	1
39	SA4012-39	Nut	1
40	SA4012-40	Packing	1
41	SA4012-41	Tube	1
42	SA4012-42	Bushing	1
43A	SA4012-43A	Cup	1
44	SA4012-44	Muffler	1
46	SA4012-46	Rubber	1
47	SA4012M-47	O-Ring	1
48	SA4012M-48	O-Ring	2
49	SA4012-49	O-Ring	1