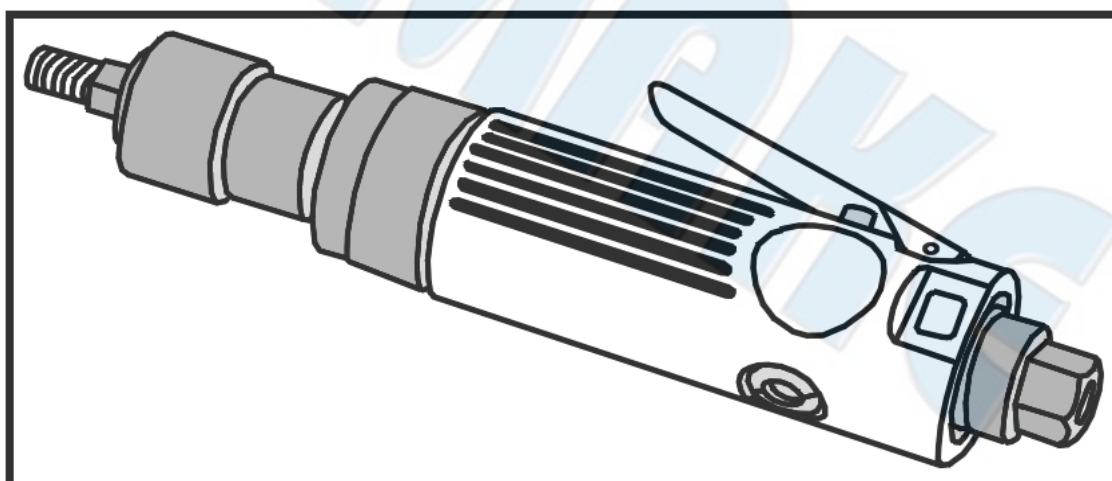




SUMAKE PNEUMATIC TOOLS



Pro.Tire Buffer W/Quick Change Chuck, W/O Metal Wheel ST-66555

Specification:

Free Speed	2,500 r/min
Air Consumption	10 CFM (283 L/min)
Overall Length	8.27" (210 mm)
Air Inlet (PT)	1/4" (6.35 mm)
Air Hose (I.D.)	3/8" (10 mm)
Air Pressure	90 psi (6.3 bar)
Net Weight	2.1 lbs (0.95 kg)

Noise and Vibration:

Vibration EN ISO 28662-12	Noise EN ISO 15744	Remark
No Load: 2.6 m/s ²	Sound Pressure Level No load: 92 dB(A)	Please always wear ear protector at environment noise level > 80 dB(A) due to risk of impaired hearing!
Uncertainty K= 1.35 m/s ²	Sound power level No load: 103 dB(A)	
	Uncertainty K= 3dB	



EC DECLARATION OF CONFORMITY

We: **SUMAKE INDUSTRIAL CO., LTD.**

4F, No. 351, Yangguang St., Neihu District, Taipei City, Taiwan

declare in sole responsibility that the equipment

Equipment : **PRO.TIRE BUFFER W/QUICK CHANGE CHUCK, W/O METAL WHEEL**

Model/ Serial No. : **ST-66555**

to which this declaration applies, complies with these normative documents:

- Machinery Directive: 2006/42/EC

and conforms to the following EN standard,

- EN ISO 12100: 2010
- EN ISO 11148-9:2011

Name and Signature/Position

Mike Su – Managing Director

Date and Place

2012/5/31

Taipei, Taiwan

ST-66555-D-1406E-PZF

Application:

Ideal for patchwork, roughing areas for recapping and cleaning tire moldings.

Operation Method:

1. This tool is designed to operate at **90psi(6.3bar)**. Lower pressure (below **90psi(6.3bar)**) will reduce performance of the tool while higher air pressure (over **90psi(6.3bar)**) raises the performance of the tool beyond its rated capacity and could cause serious damage to tool and user.
2. Use clean dry air. Excessive moisture and dirt will reduce the life of any air motor. We recommend the installation of an in-line filter-regulator-lubricator as close to the tool as possible.
3. A **3/8"(10mm)** air hose is required up to a length of 8ft(2.5m). If more length is required a **1/2"(13mm)** air hose should be used at the compressor. Attach a **3/8"(10mm)** whip hose for the remaining 4-8ft (1-2.5m) for flexibility. Be sure all hoses and fittings are the correct size and tightly secured before using air tool.
4. To change the tire buffer wheel :
 - Always disconnect the tool from the air supply before changing accessories
 - Tighten adapter on the tire buffer wheel.
 - Insert the tire buffer wheel into quick chuck.



Pulling out the quick chuck and then insert the adapter into the cylinder.



By loosening the quick chuck the adapter would be fixed properly.



Using a slotted screwdriver to adjust the speed.



Clockwise screw the metal wheel onto the adapter.
P.s. standard package w/o metal wheel including.



Tightening the metal wheel up with open wrenches (17&11).
ATTENTION: please do not connect to the air while changing the metal wheel.



Press the trigger to start the tool.

ATTENTION: please make sure the metal wheel has been locked tightly before trigger on.



Assembling the metal wheel enable to grind the work piece.



Rear exhaust.



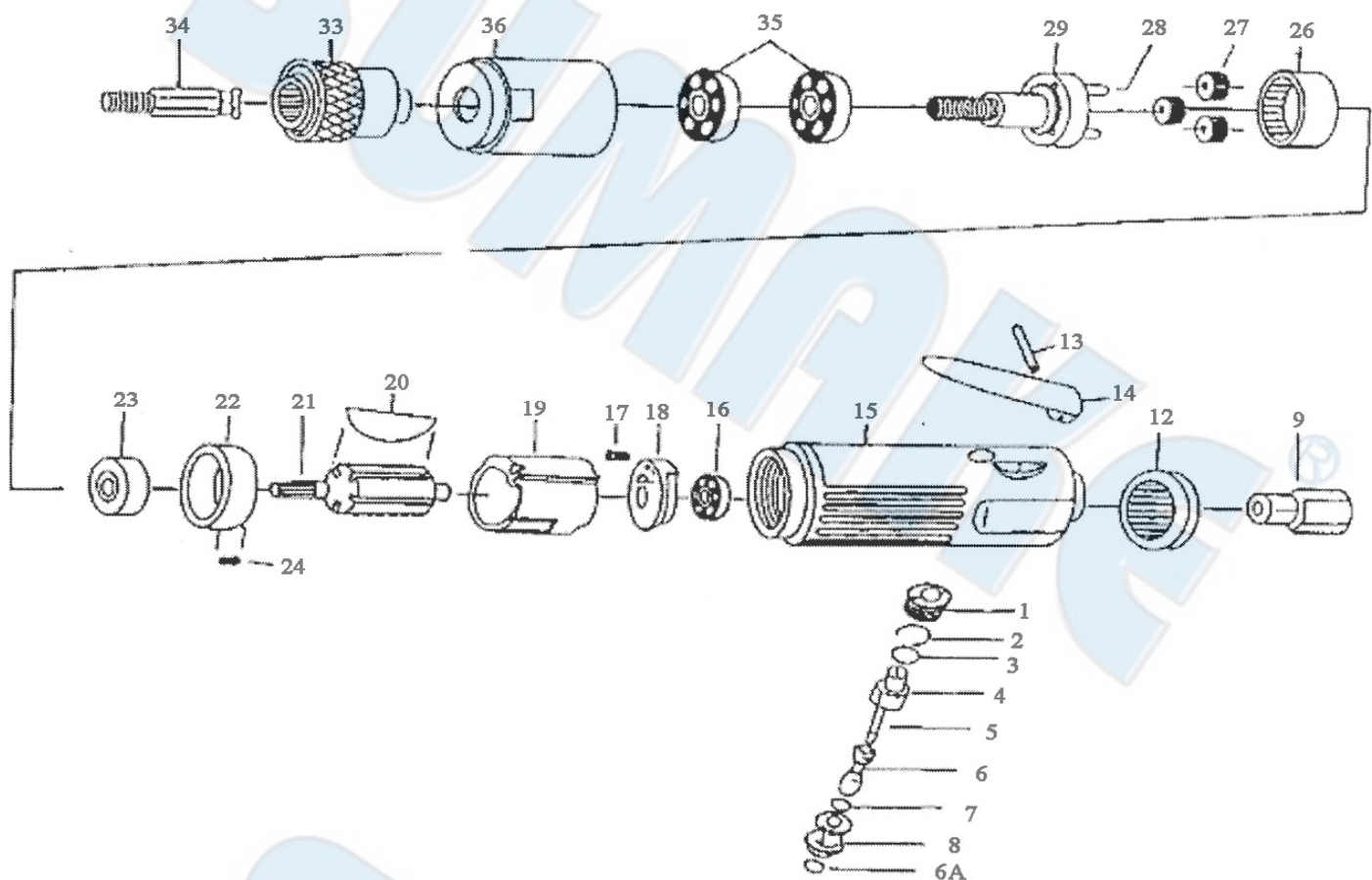
Connect fitting with air hose.

Common Troubleshooting:

Event	Appearance	Possible Cause	Solution
Not operating	Air is coming from the exhaust valve	Blades broken or worn out	Replace blades
		Ball bearing damaged	Replace ball bearing
		Rusty motor or clogged with objects	Disassemble and repair
	No air coming from the exhaust valve	Regulator is set at OFF	Adjust regulator
		No air flow	Check air system and connections
		Valve set damaged or broken	Disassemble and repair
Low efficiency	Low revolution rate	Not enough air pressure	Check air pressure
	Motor running abnormal or unusual noises occur	Not enough lubrication, ball bearing, upper/lower end plate, cylinder, rotor, blade damaged	Lubricate or replace parts
	Torque rate decreases	Gear set broken or blade worn out	Replace gear set or replace blade
Motor keeps running	Trigger does not bounce back or does not bounce back correctly	Trigger set has other objects stuck on it or the spring is broken, deformed or rusty	Disassemble and repair
	Trigger function normally	Trigger O-ring worn out or valve set damaged or broken	Disassemble, repair and replace parts

ST-66555

PRO. TIRE BUFFER W/QUICK CHANGE CHUCK W/O METAL WHEEL



PARTS LIST

No.	Parts No.	Description	Q'ty	No.	Parts No.	Description	Q'ty
1	66555-01	Valve Screw	1	18	66555-18	Bear End Plate	1
2	66555-02	"O"- Ring (P12)	1	19	66555-19	Cylinder	1
3	66555-03	"O"- Ring (P7)	1	20	66555-20	Rotor Blade	4
4	66555-04	Air Controller	1	21	66555-21	Rotor	1
5	66555-05	Valve Spring	1	22	66555-22	Front Plate	1
6	66555-06	Valve Stem	1	23	66555-23	Ball Bearing (626ZZ)	1
6A	66555-06A	O-Ring (P5)	1	24	66555-24	Spring-Pin (φ2.5x4)	2
7	66555-07	"O"- Ring (φ3.6x2.4)	1	26	66555-26	Internal Gear	1
8	66555-08	Valve Bushing	1	27	66555-27	Planet Gear	3
9	66555-09	Inlet Bushing	1	28	66555-28	Planet Pin (φ4x14.8)	3
12	66555-12	Exhaust Deflector	1	29	66555-29	Planet Carrier	1
13	66555-13	Spring Pin (φ3x23)	1	33	66555-33	Quick Chuck	1
14	66555-14	Throttle Lever	1	34	66555-34	Adapter	1
15	66555-15	Motor Housing	1	35	66555-35	Ball Bearing (6201ZZ)	2
16	66555-16	Ball Bearing (626ZZ)	2	36	66555-36	Genr Housing	1
17	66555-17	Spring Pin (φ2.5x6)	2				