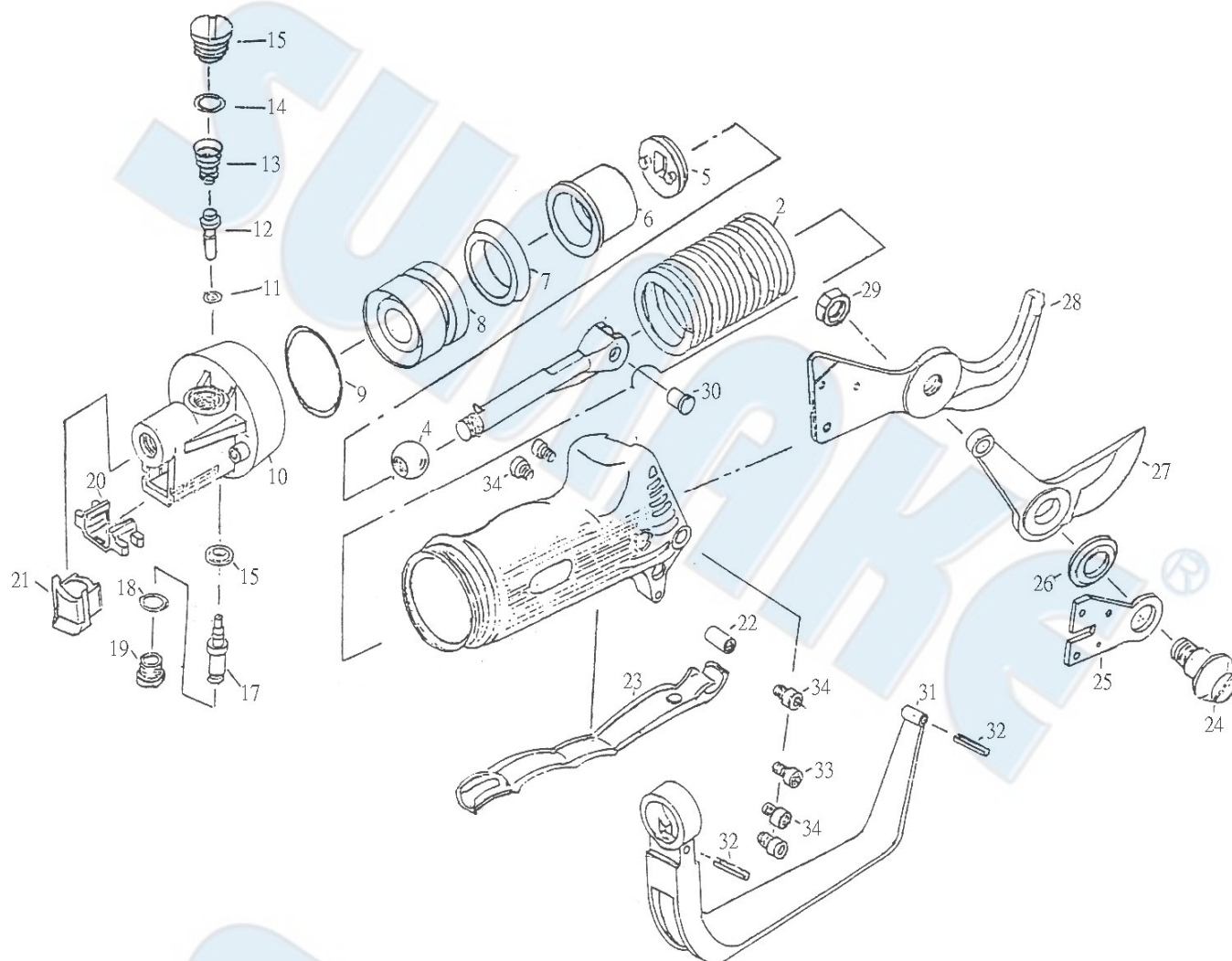


# ST-66200 AIR SHEAR (PLASTIC HOUSING)



## PARTS LIST

No.	Parts No.	Description	Q'ty
1	66200-01	Housing	1
2	66200-02	Spring	1
3	66200-03	Shaft	1
4	66200-04	Join Ter	1
5	66200-05	Bumper	1
6	66200-06	Washer	1
7	66200-07	Piston Ring	1
8	66200-08	Piston	1
9	66200-09	O-Ring	1
10	66200-10	End Cap	1
11	66200-11	O-Ring	1
12	66200-12	Front Push Rod	1
13	66200-13	Valve Spring	1
14	66200-14	O-Ring	1
15	66200-15	Valve Screw	1
16	66200-16	O-Ring	1
17	66200-17	Valve Stem	1

No.	Parts No.	Description	Q'ty
18	66200-18	O-Ring	1
19	66200-19	Bushing	1
20	66200-20	Safety Slider	1
21	66200-21	Muffler	1
22	66200-22	Trigger Pin	1
23	66200-23	Trigger	1
24	66200-24	Bolt	1
25	66200-25	Guide Plate	1
26	66200-26	Washer	1
27	66200-27	Blade	1
28	66200-28	Blade	1
29	66200-29	Nut	1
30	66200-30	Pin	1
31	66200-31	Handle Guard	1
32	66200-32	Pin	2
33	66200-33	Screw	1
34	66200-34	Screw	5

## Operator's instruction

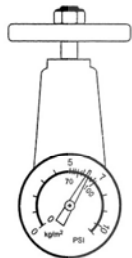
### 1. Main Applications

This tool with a reversible spindle which includes a drive adapter for the purpose of tightening or loosening threaded nuts and bolts without producing any major torque reaction on the power tool.

### 2. Cautions for Use

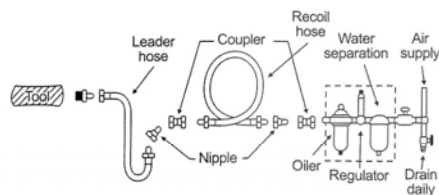
#### 2-1 Air pressure

Maximum performance is displayed at the proper air pressure. The information about the working pressure is in the specification list. Make sure the air supply pressure does not fall after the clutch has been set.



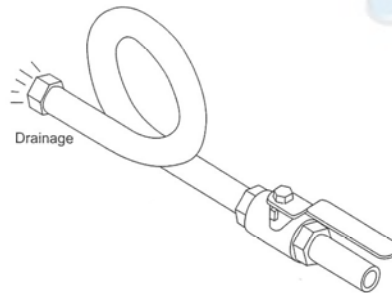
#### 2-2 Air line

Use a 3/8" air hose between the compressor and the tool. Compressed air is cooled and its water content separated, as soon as the air leaves the compressor. A portion of the water content, however, is condensed in the piping, and can enter the tool mechanism, and may cause trouble. So, install an air filter and an oiler between the compressor and the tool.



#### 2-3 Air hose

Clean the hose with a blast of compressed air before connecting the hose to air tool. This will prevent both moisture and dust within the hose from entering the tool and causing possible rust or malfunction. To compensate for unusually long hose (over 25 ft), the line pressure should be increased accordingly.



#### 2-4 Inserted tools

Use only the socket or adapter which are in good condition for use. The intended socket and adapter for this air tool could be stated as "Square Drive" on the specification list.

**2-5** The approved eye protector, ear-muff, mouth-muffle, and gloves shall be worn when operate this tool.

**2-6** The working place shall be well ventilated.

**2-7** Release the on-off device in the case of energy supply failure.

**2-8** Use only the recommended lubrication oil.

**2-9** After working, take off air hose, pour 4 or 5 drops of #60 spindle oil into "oil daily", connecting the hose again, it can delay the lifetime.

#### 2-10 On-off device

The on-off device is of trigger type which is on the contour of the grip. It is a "hold-to-run" type. This tool stops rotation within few sec, after releasing the trigger. For the sake of safety, place it on a level plate or on hanger after it completely stops.

## 3. Maintenance

### 3-1 Lubrication

Before connecting the hose, apply 4 or 5 drops of #10 spindle oil at the air inlet. Use of a thicker oil can lead to reduced performance or malfunction. If a thicker oil is used by accident, wash it away immediately. Also, every 3 or 4 hours of operation, oiling is necessary.

### 3-2 Storage

Avoid storing the tool in a location subject to high humidity. If the tool is left as it is used, the residual moisture inside the tool can cause rust. Before storing and after operation, oil the tool at the air inlet with spindle oil and run it for a short time.

### 3-3 Disposal

If the tool is too seriously damaged to be used anymore, drop it in a resource recycling can. Never drop it into fire.

### 3-4 Ordering service Parts

For further operational and handling information or for replacement of parts and components, contact the sale agent from whom you purchased the tool or the service division of our company.

\* In ordering parts and components, give each part number, name and quantity.

## Warning

1. The power tool shall not be used in potentially explosive atmospheres.
2. Unexpected tool movement due to reaction forces or breakage of inserted tool or reaction bar may cause injuries.
3. Disconnect the air hose before changing or adjusting any inserted tools.
4. Prevent long hair or loose clothing from drawing in while operate this tool.
5. Keep your body in well balanced position and always wear gloves to reduce the risk of crushing caused by torque between a reaction bar and workpiece.
6. Unexpected direction of inserted tool movement could cause a hazardous situation.
7. Slip/Trip/Fall is a major reason of serious injury or death. Beware of excess hose left on the walking or work surface and the whipping air hose.
8. Wearing eye/face protector could reduce the danger to person from high speed splinters being emitted from this tool in the case of inserted tool failure or emitted from the workpiece.
9. Wearing mouth-muff could avoid inhaling dust or handling debris from work process that can be harmful to your health.
10. Excessive high air pressure and too much free rotation may speed the wear of this tool and might cause danger situation.
11. Against the risk of being injured if hands are not kept away from the nut runner sockets.

