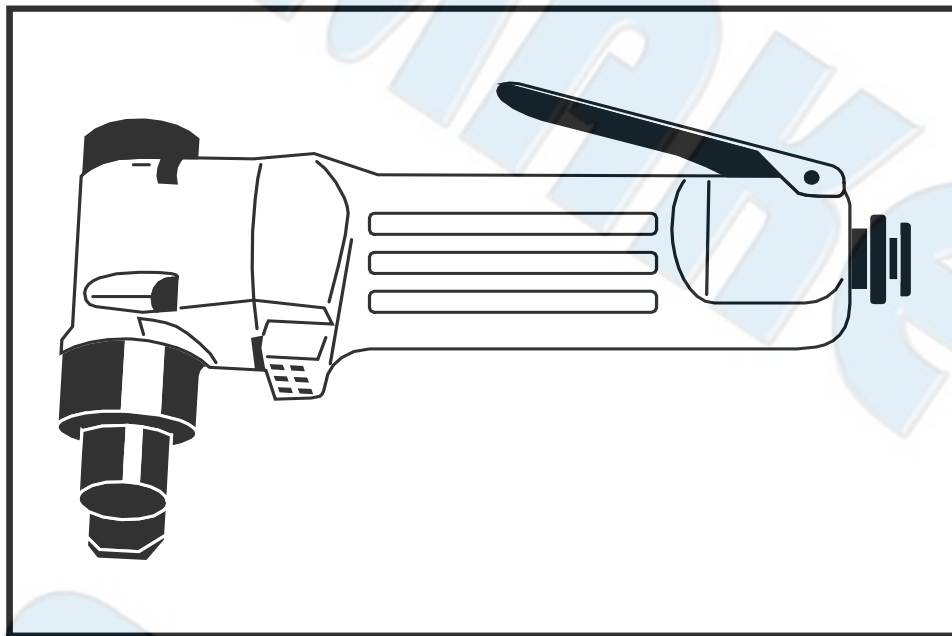




# SUMAKE PNEUMATIC TOOLS



## Air Nibbler (Push Type) ST-6625

### Specification:

Blow Per Min.	2,900 bpm
Cutting Capacity (Gauge) Thickness	Steel 17G (1.4mm) Alum. 16G (1.6mm)
Air Consumption	10 CFM (283 L/min)
Overall Length	7" (180 mm)
Air Inlet (PT)	1/4" (6.35 mm)
Air Hose (I.D.)	3/8" (10 mm)
Air Pressure	90 psi (6.3 bar)
Net Weight	2.4 lbs (1.1 kg)

### Noise and Vibration:

Vibration EN ISO 28927-7	Noise EN ISO 15744	Remark
No Load: 3.8 m/s <sup>2</sup>  Uncertainty K= 1.5 m/s <sup>2</sup>	Sound Pressure Level load: 85.5 dB(A)	Please always wear ear protector at environment noise level > 80 dB(A) due to risk of impaired hearing!
	Sound power level load: 96.5 dB(A)	
	Uncertainty K= 3dB	



## EC DECLARATION OF CONFORMITY

We: **SUMAKE INDUSTRIAL CO., LTD.**

**4F, No. 351, Yangguang St., Neihu District, Taipei City, Taiwan**

declare in sole responsibility that the equipment

Equipment : **AIR NEEDLE SCALER**

Model/ Serial No. : **ST-6625**

to which this declaration applies, complies with these normative documents:

- Machinery Directive: 2006/42/EC

and conforms to the following EN standard,

- EN ISO 12100: 2010
- EN ISO 11148-10:2011

Name and Signature/Position

Mike Su – Managing Director

Date and Place

2012/9/14

Taipei, Taiwan

ST-6625-D-1210C-PZF

**Application:**

The purpose of nibbler is to make complex cuts in both metal and aluminum. Generally in use of professional industry or automotive repair purpose.

- Tool accessory may continue to function briefly after throttle is released.
- Use accessories recommended by SUMAKE.
- Do not use dull or damaged punch.
- Do not force the tool. It will perform better when used at the speed for which it was designed.
- Always use the proper punch.
- Prevent exposure and breathing of harmful dust and particles created by tool, work in a well-ventilated area and work with approved safety equipment, such as those dust masks that are specially designed to filter out microscopic particles.



Best fit for paint and auto body shops, sheet metal shops and tinsmiths. Available for cutting sheet metal, plastic and aluminum without deforming the material.



Push trigger to activate the tool.



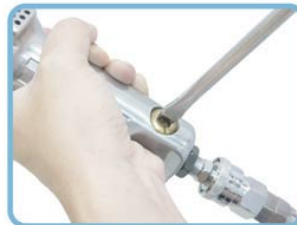
Connect fitting with air hose.



Please add lubricant ISO VG-32 (SAE 10) about 3c.c. daily.



Front Exhaust.

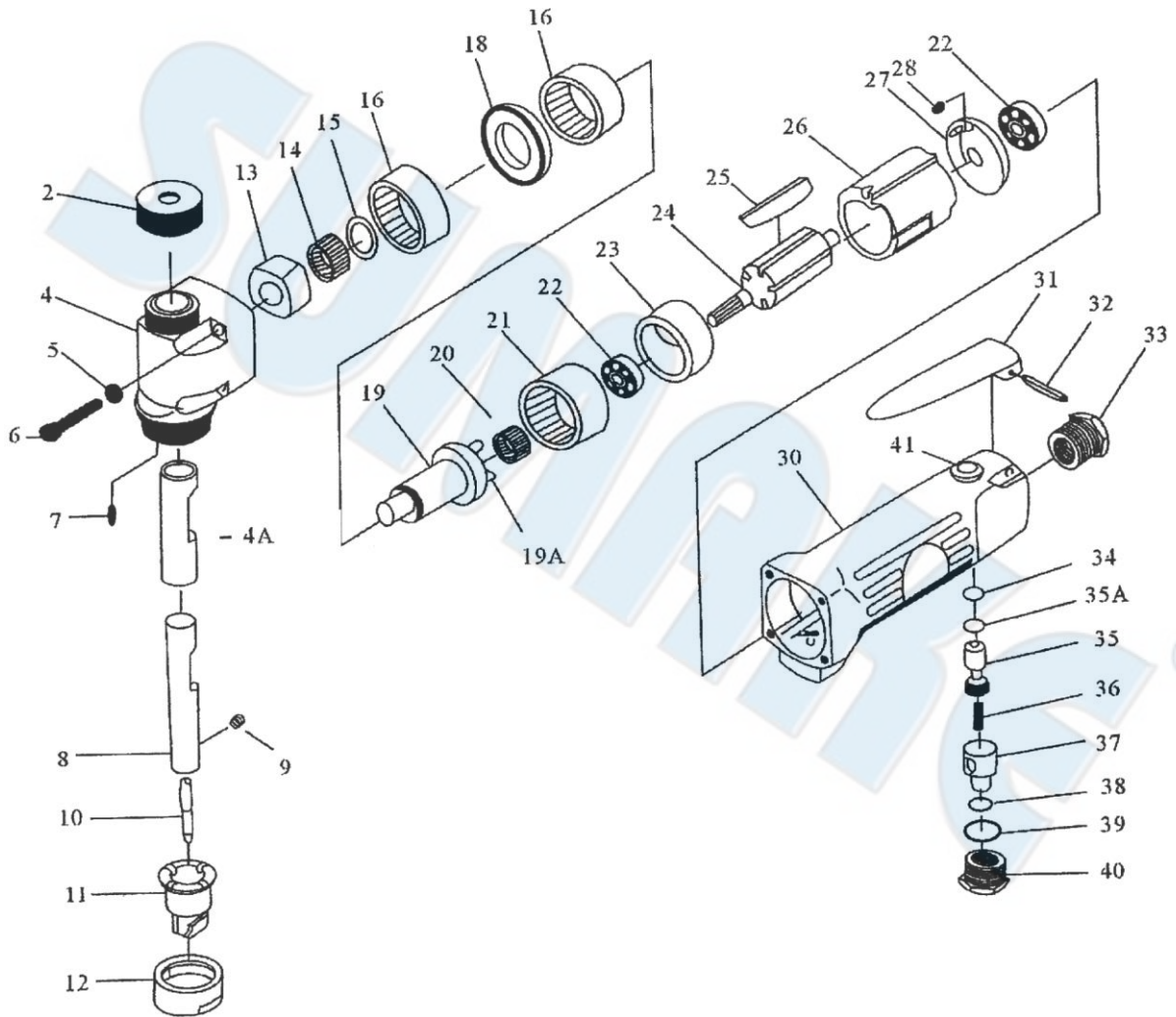


Use slotted screwdriver to enable speed adjustment.

**Common Troubleshooting:**

Event	Appearance	Possible Cause	Solution
Not operating	Air is coming from the exhaust valve	Rusty cylinder or clogged with objects	Disassemble and repair
		Bearing is broken	Disassemble and repair
	No air coming from the exhaust valve	Regulator is set at OFF	Adjust regulator
Low efficiency		No air flow	Check air system and connections
	Low revolution rate	Not enough air pressure	Check air pressure
Motor keeps running	Motor running abnormal or unusual noises occur	Not enough lubrication, cylinder, cylinder head, Motor damaged	Lubricate or replace parts
	Trigger does not bounce back or does not bounce back correctly	Trigger set has other objects stuck on it or the spring is broken, deformed or rusty	Disassemble and repair
	Trigger function normally	Trigger O-ring worn out or valve set damaged or broken	Disassemble, repair and replace parts

# ST-6625 AIR NIBBLER (PUSH TYPE)



## PARTS LIST

No.	Parts No.	Description	Q'ty
2	6625-02	Head Gap	1
4	6625-04	Head	1
4A	6625-04A	Head Bushing	1
5	6625-05	Washer	4
6	6625-06	Screw (4x25)	4
7	6625-07	Pin (Φ2.5x5.8)	1
8	6625-08	Slide Pin	1
9	6625-09	Set Screw (5x5)	1
10	6625-10	Ponch	1
11	6625-11	Dies	1
12	6625-12	Lock Nut	1
13	6625-13	Cam	1
14	6625-14	Needle Roller (Φ3x9.8)	13
15	6625-15	Retaining Ring (S17)	1
16	6625-16	Ball Bearing (60032ZZ)	2
18	6625-18	Spacer	1
19	6625-19	Crank Shaft	1
19A	6625-19A	Pin (4x14.8)	3
20	6625-20	Idler Gear	3
21	6625-21	Internal Gear	1

No.	Parts No.	Description	Q'ty
22	6625-22	Ball Bearing (626ZZ)	2
23	6625-23	Front End Plate	1
24	6625-24	Rotor	1
25	6625-25	Rotor Blade	4
26	6625-26	Cylinder	1
27	6625-27	Rear End Plate	1
28	6625-28	Pin (2.5x6)	1
30	6625-30	Motor Housing	1
31	6625-31	Throttle Lever	1
32	6625-32	Lever Pin (3x23)	1
33	6625-33	Inlet Bushing	1
34	6625-34	O-Ring (3.6x2.4)	1
35	6625-35	Valve Stem	1
35a	6625-35A	O-Ring (P5)	1
36	6625-36	Valve Spring	1
37	6625-37	Air Regulator	1
38	6625-38	O-Ring (P7)	1
39	6625-39	O-Ring (P12)	1
40	6625-40	Throttle Valve Plug	1
41	6625-41	Valve Bushing	1