

DT-6604 DIGITAL TIRE INFLATER

Features:

Reinforced plastic gun body. Slip proof handle grip; shock resistant gauge protector. Backlit screen; auto turn itself off after 80 seconds for power saving.
Operation pressure up to 100 PSI
Fast inflation, air flow delivered: 1.28 CFM

Function:

Fill air (inflation)
Release air (deflating)
Gauge pressure (measuring)

Specifications:

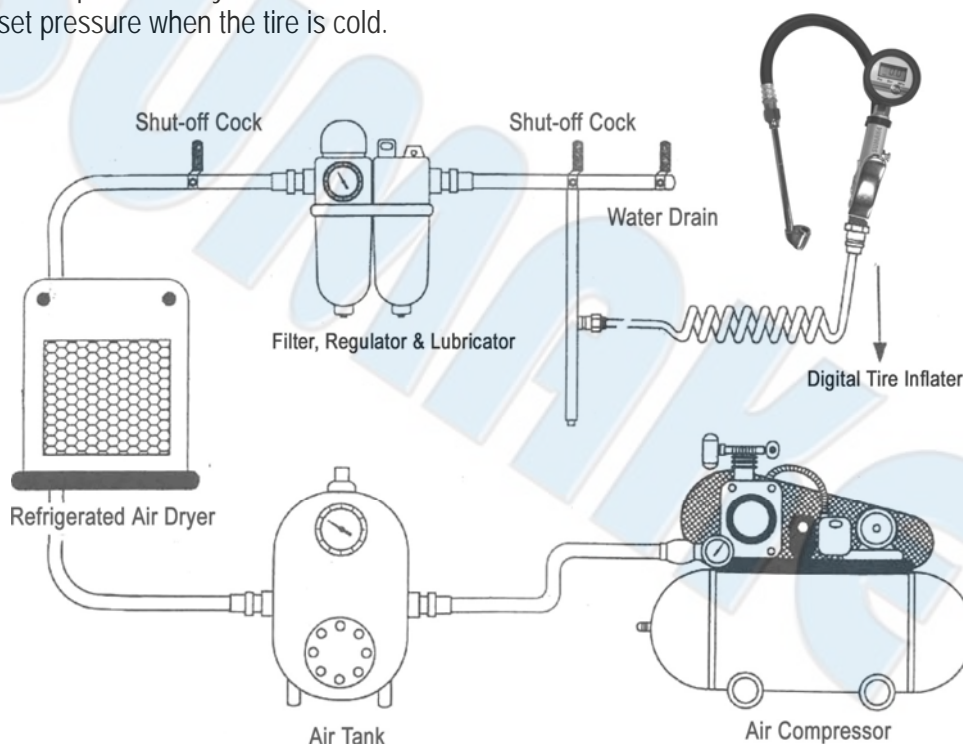
- 2" Gauge 360 Degree Swivel Function.
- Measure Range: 0 - 100 PSI , 0 - 7.0 BAR , 0 - 0.7 Mpa
- Pressure Increments: 0.2 PSI ; 0.02 Bar ; 0.002 Mpa
- Measuring Range form 0 - 100 PSI (+/- 2%, @25°C)
- Supply Voltage: two 1.5 V DC Battery. Battery Life: 1,500 hrs.(continue working)
- User Interface: ON/OFF
- Function
 - 0 – User Zero
 - 1 – Auto - off Time Selectable
 - 2 – 3 Units Selectable
- 1/4" Rubber Hose & Dual Chuck 6" Steel, Hose 33CM <W.P. W/200PS1>

WARNING: USE ONLY WITH REGULATED AIR SYSTEMS. Do not exceed 120 PSI maximum.

Check tire pressure often while inflation. Inflate to tire manufacturer's recommended pressure only. Over-inflation and under-inflation of tire both create potentially hazardous driving conditions.

Wearing impact-resistant protective eyewear while inflation tires is recommended.

Always check and set pressure when the tire is cold.



LCD GAUGE OPERATION GUIDE

Operation mode:

To switch on: When the gauge is off, press "On" button once then the gauge will be turned on.

To switch off: When the gauge is on, press "On" button once turn off. Or, the gauge will be automatically off when it has been set in advance to be turned off under specific condition.

Change Functional Setting

Three different function settings can be manipulated according to user's need:

- (1) Sets to zero
- (2) Automatic shut-off
- (3) Pressure unit selections

How to go in to Function settings

When the gauge is on, please turn off the gauge. Having turned off the gauge and with nothing show on the LCD, press "On" button for about 3 seconds until the LCD shows 「 --- 」. And then, let go the "On" button. 「 -0- 」, 「 -1- 」, and 「 -2- 」 will be showing on the LCD. Please select the function 「 -0- 」, 「 -1- 」, or 「 -2- 」 according to your need. (Details please see the following bullet points.) Lastly, 「 -E- 」 will show for 2 seconds and the gauge will shut off automatically.

When LCD shows 「 --- 」 and not let go the "On" button, the LCD will keep showing

「 --- 」 until the "On" button has been released.

- (1) Sets to zero : When LCD displays 「 -0- 」 <*>, press "On" button once, the gauge will be set to zero.
<*> If not pressing "On" in 3 seconds, LCD will show 「 -1- 」.
- (2) Automatic shut-off : When LCD shows 「 -1- 」 <*1>, press "On" once, the gauge will go in to Automatic shut-off mode.
<*1> If not pressing "On" in 3 seconds, LCD will show 「 -2- 」.
- (3) Pressure unit selections : When LCD shows 「 -2- 」 <*2>, press "On" once, the gauge will allow you to select the pressure unit.
<*2> If not pressing "On" in 3 seconds, LCD will show 「 -E- 」 and the gauge will be turned off automatically.

1. -0- Sets to zero

If there is no pressure being entered, please follow the how to instruction above to go to the function of set to zero.

When seeing 「 -0- 」 showed on the LCD, press "On" button once in 3 seconds. LCD will shows 「 00- 」, please press the "On" button one more time and then 「 000 」 will be shown on the LCD. Within 3 seconds, press "On" button again. Now, the gauge will set to zero. Once the gauge finishes zero, 「 End 」 will be shown on the display for 2 seconds and then turn off.

※ When seeing 「 -0- 」, 「 00- 」 or 「 000 」 and not pressing "On" button in 3 seconds, the gauge won't do zero. After it shows 「 -E- 」 on the display, the gauge will turn off.

2. -1- Automatic shut-off

Default setting: 180 (Unit: seconds)

Change the time value: Following the how to instruction above to go to automatic shut-off function

The numbers show on the display are "30", "60", "120", and "180". Each number will last about 2 seconds on the display.

Once the number to be set is showing, press " On " to select the value. The value will flash 3 times. The gauge will turn off after showing 「 End 」 for 2 seconds.

※ Number selections will show 4 times with the sequence of "30", "60", "120", and "180". If not choosing any number, the gauge will not change the previous setting. After showing 「 -E- 」 for 2 seconds, the gauge will turn off.

3. -2- Pressure unit selections

Default setting: PSI

Please follow the how to instruction above to go to the selection for measurement unit.

Display shows the sign as 「 - 」 (left), 「 - 」 (middle) and 「 - 」 (right), each for two seconds. Each dash is corresponding to the measurement unit wording on the front, which has PSI, Bar, and MPa. When the dash is at the desired pressure unit, press " On " to select the unit. The selected unit will flash 3 times. After showing 「 -E- 」 for 2 seconds, the gauge will turn off.

※ The selections will show 4 times. If the unit isn't selected, the previous setting will be kept. After showing 「 -E- 」 for 2 seconds, the gauge will turn off.

EU Declaration of Conformity (DOC)

We: **SUMAKE INDUSTRIAL CO., LTD.**

4F, No. 351, Yangguang St., Neihu District, Taipei City, Taiwan

declare in sole responsibility that the equipment

Equipment : **DIGITAL TIRE INFLATER**

Model/ Serial No. : **DT-6604**

The object of the declaration described above is in conformity with the relevant union harmonization legislation:

- Machinery Directive 2006/42/EC
- Electromagnetic Compatibility 2014/30/EU
- RoHS 2011/65/EU

The following harmonised standards and technical specifications have been applied:

- EN ISO 4414
- EN 61000-6-3
- EN 55022
- EN 61000-6-1

Name and Signature/Position



Mike Su – Managing Director

Date and Place

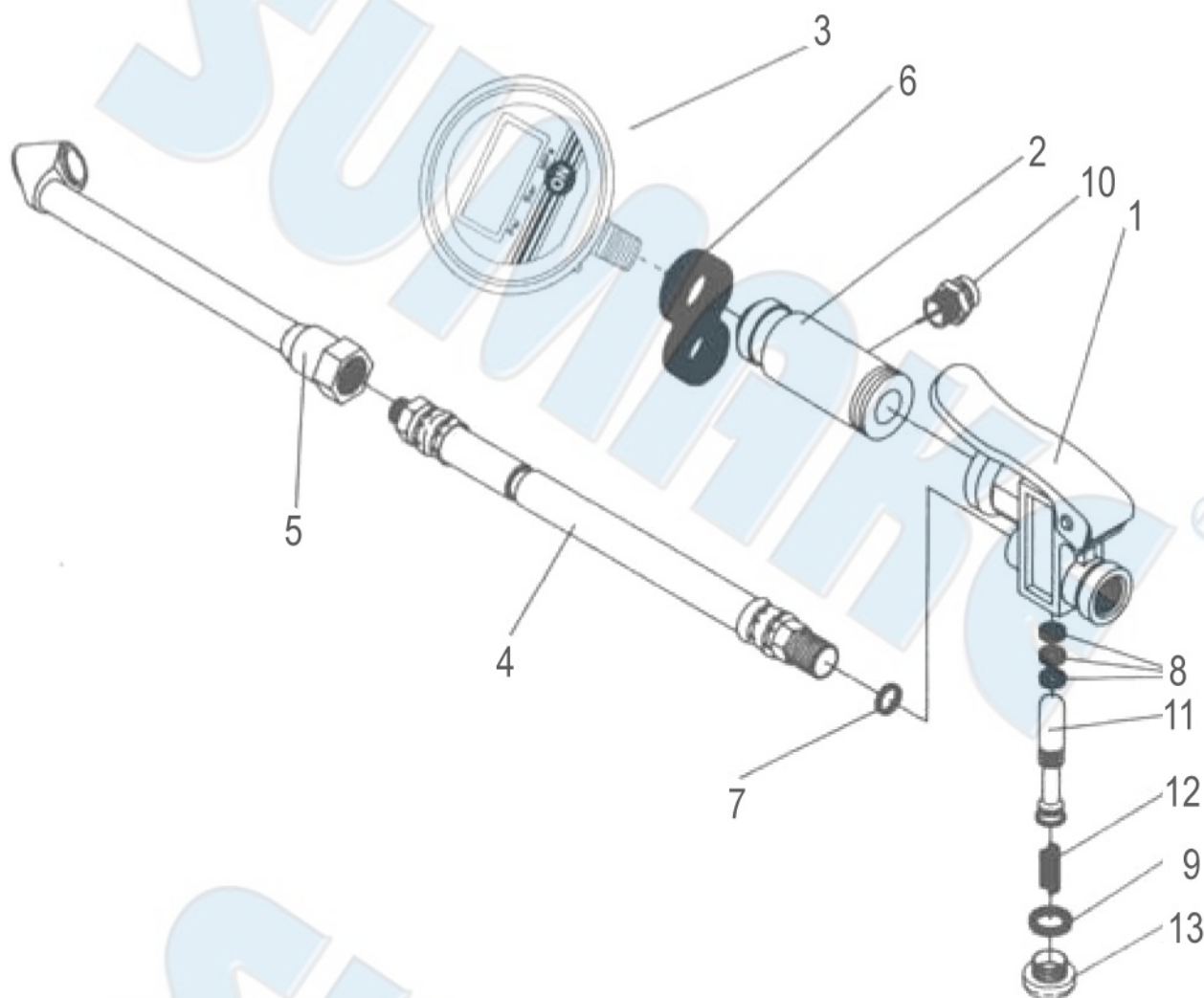
2016/4/20

Taipei, Taiwan

DT-6604-D-1606C-LMF

DT-6604

DIGITAL TIRE INFLATER W/33CM RUBBER HOSE & DUAL CHCUK 6" STEEL



PARTS LIST

No.	Parts No.	Description	Q'ty
1	DT6604-01	Body	1
2	DT6604-02	Connector	1
3	DT6604-03	Digital Gauge	1
4	DT6604-04	Air Hose With Fitting	1
5	DT6604-05	Dual Chuck	1
6	DT6604-06	Fixed Guide	2
7	DT6604-07	O-Ring	1
8	DT6604-08	O-Ring	3
9	DT6604-09	O-Ring	1
10	DT6604-10	Pressure Release Knob	1
11	DT6604-11	Valve Stem	1
12	DT6604-12	Spring	1
13	DT6604-13	O-Ring	1
14	DT6604-14	Housing	1