



DT-6600 3 IN 1 DIGITAL TIRE INFLATER

Proper tire pressure is critical to the safe operation of your vehicle. Accurate pressure is critical to maximizing performance and tread life. Proper tire pressure improves/ maximizes gas mileage. This new digital tire inflator combines the ease of use with accurate reading and/or setting of pressure on almost all pneumatic tires up to 160psi.

FUNCTION

- (1) Dual button a and b:
 - (a) ON.OFF/LIGHT button: quick push power on/off; push and hold for 3 seconds to turn on the light.
 - (b) UNIT/RESET button: quick push switch the pressure units Psi/Bar/KgCm²/Kpa; push and hold for 3 seconds to set to zero.
(please refer to the blow step RESET TO ZERO)
- (2) The unit can be turned off at any time during use to save power. Just push the on/off button.
- (3) If the unit is not manually turned off it will automatically turn itself off after leave the button operation off approx. 180 seconds.
- (4) Rigid fiber glass reinforcement ABS body, rigid fiber glass reinforcement POM trigger, soft plastic bumper and handle grip for shock absorb and non-slip.

SPECIFICATIONS

- (1) Pressure increments: 0.5psi/0.05bar.
- (2) LCD screen operating limits:
operating temperature: -10 to 45 degree Celsius.
storage temperature range: -20 to 70 c.
- (3) Functional operating range: 2.0 to 160 psig.
The unit will read zero "0.0 psig" ("0.00 bar"), when actual pressure is below 1.5 psig (0.10 bar).
- (4) Accuracy: between 2.0 and 80 psi +/- 1.0psi; between 81 and 160 psi +/- 1.5 psi.

RESET TO ZERO

- (1) Push/ hold the (b) button for 3 seconds to start calibration. The display will read "-.-.-" during this time. The display will then reset to "0.0"
- (2) Only calibrate when the unit is disconnected from the air supply. Push the "air release" button to be sure no air is in the unit.

TO REPLACE THE BATTERY

- (1) Carefully push away the battery cover.
- (2) Pick up the old battery and replace with a new one (AAA size 1.5V battery). Pay careful attention to correct battery orientation (+/-).

Always check and set pressure when the tire is cold.





EC DECLARATION OF CONFORMITY

We: **SUMAKE INDUSTRIAL CO., LTD.**

4F, No. 351, Yangguang St., Neihu District, Taipei City, Taiwan

declare in sole responsibility that the equipment

Equipment : **3 IN 1 DIGITAL TIRE INFLATER**

Model/ Serial No. : **DT-6600**

to which this declaration applies, complies with these normative documents:

- Machinery Directive 2006/42/EC
- Electromagnetic Compatibility 2004/108/EC
- RoHS 2011/65/EU

and conforms to the following EN standard,

- EN ISO 4414
- EN 61000-6-3
- EN 55022
- EN 61000-6-1

Name and Signature/Position

Mike Su – Managing Director

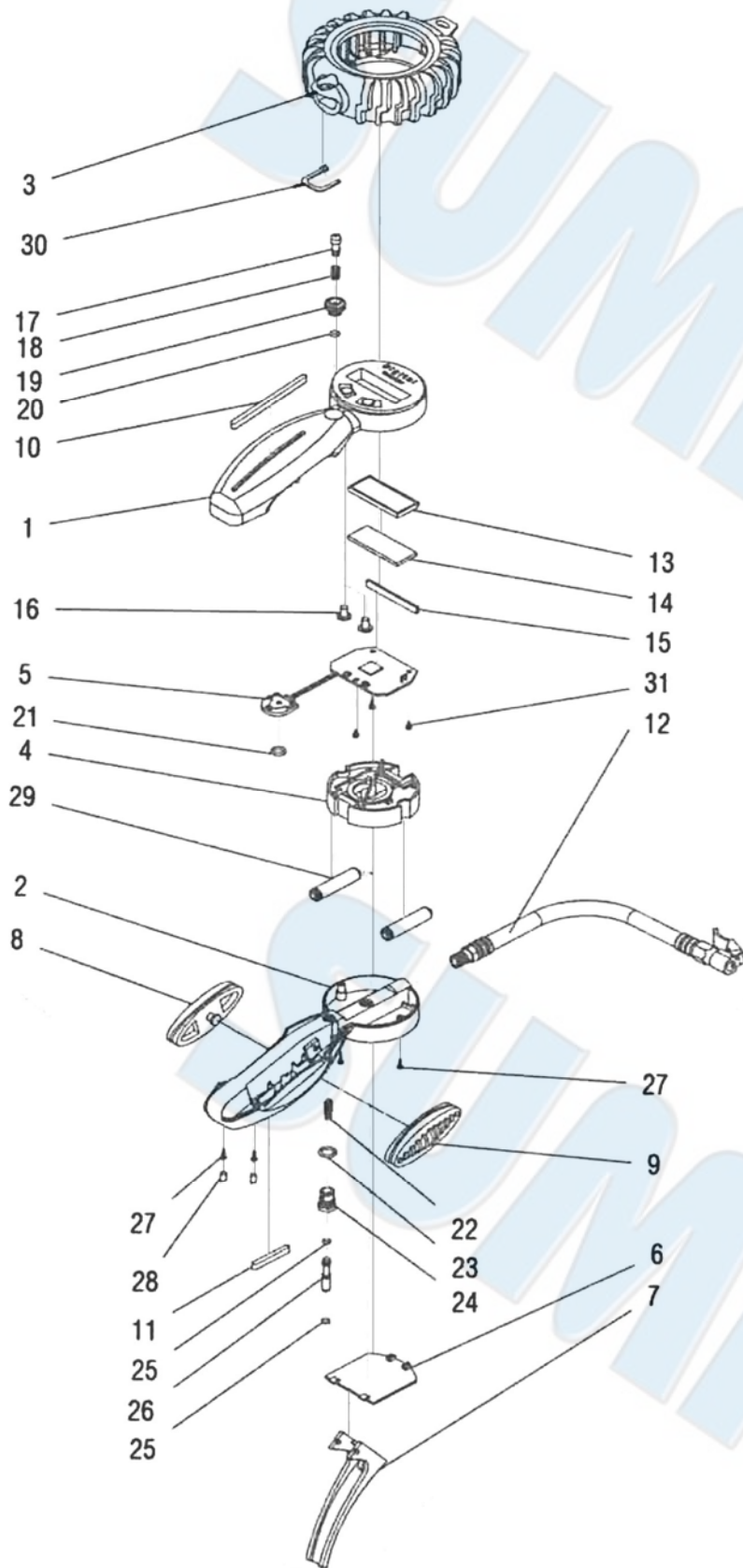
Date and Place

2014/9/15

Taipei, Taiwan

DT-6600-D-1512B-LMF

DT-6600 3 IN 1 DIGITAL TIRE INFLATER



PARTS LIST

No.	Parts No.	Description	Q'ty
1	DT6600-01	Body-1 Upper Case	1
2	DT6600-02	Body-2 Lower Case	1
3	DT6600-03	Gauge Protector	1
4	DT6600-04	Battery Holder	1
5	DT6600-05	Printed Circuit Board	1
6	DT6600-06	Battery Compartment Cover	1
7	DT6600-07	Trigger Level	1
8	DT6600-08	Cover Stick - Left	1
9	DT6600-09	Cover Stick - Right	1
10	DT6600-10	Cover Stick - Long	1
11	DT6600-11	Cover Stick - Short	1
12	DT6600-12	Rubber Hose With Clip Chuck	1
13	DT6600-13	LCD Screen	1
14	DT6600-14	Backlit For LCD	1
15	DT6600-15	LCD Conductive Robber	1
16	DT6600-16	Silicon Button	2
17	DT6600-17	Air Release Valve Stem	1
18	DT6600-18	Spring	1
19	DT6600-19	Air Release Valve Seat With O-Ring	1
20	DT6600-20	O-Ring	1
21	DT6600-21	O-Ring	1
22	DT6600-22	Spring	1
23	DT6600-23	O-Ring	1
24	DT6600-24	Trigger Valve Seat	1
25	DT6600-25	O-Ring	2
26	DT6600-26	Trigger Valve Stem	1
27	DT6600-27	Screw	4
28	DT6600-28	Recess plugs	2
29	DT6600-29	Battery	2
30	DT6600-30	Gauge Protector Tie	1
31	DT6600-31	Screw	3