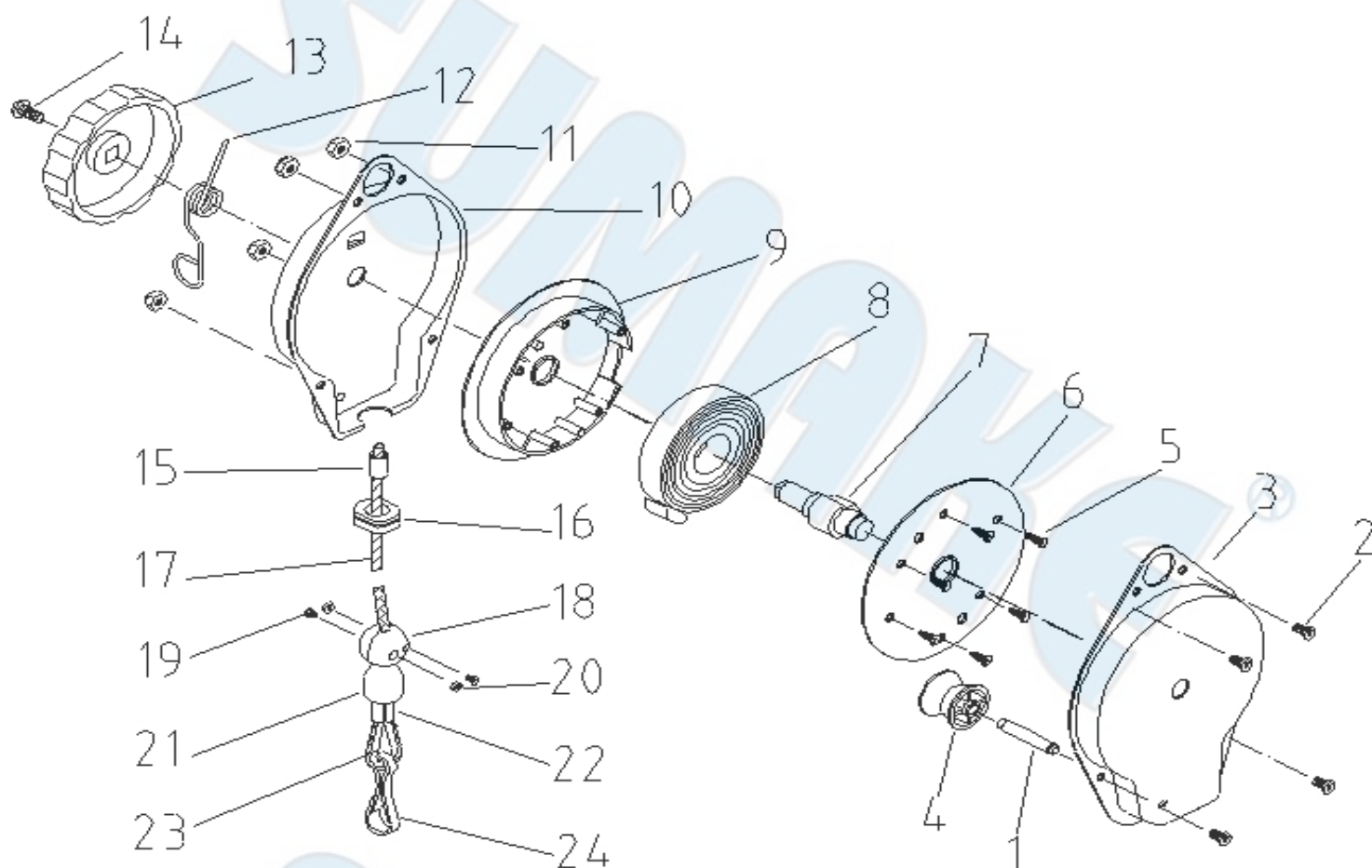


SA-2204A
SA-2204B

SPRING BALANCER (0.8-2KGS)
SPRING BALANCER (0.3-1.2KGS)



PARTS LIST

No.	Parts No.	Description	Q'ty
1	SA2204A-01	Shaft of Roller	1
2	SA2204A-02	Screw 5/32*1/4	2
3	SA2204A-03	Casing	1
4	SA2204A-04	Roller	1
5	SA2204A-05	Screw 3*15	6
6	SA2204A-06	Spring Cover	1
7	SA2204A-07	Spindle	1
8&9	SA2204A-08	Spring Plate Set	1
	SA2204B-08	Spring Plate Set	1
10	SA2204A-10	Cover	1
11	SA2204A-11	Nut 5/32	4
12	SA2204A-12	Locking Spring	1
13	SA2204A-13	Adjusting Knob	1
14	SA2204A-14	Screw 3/16*3/8	1
15~24	SA2204A-15	Rope Set	1



CAUTION



Prohibition

Operating Manual

Read this manual before use



**Install into a closed
and solid fixture.**



**This hole was used for
hanging, do not lock tightly
for wider operation direction.**



**Take loading off before
adjusting.**

**The + means the turning
direction of increase capacity.**

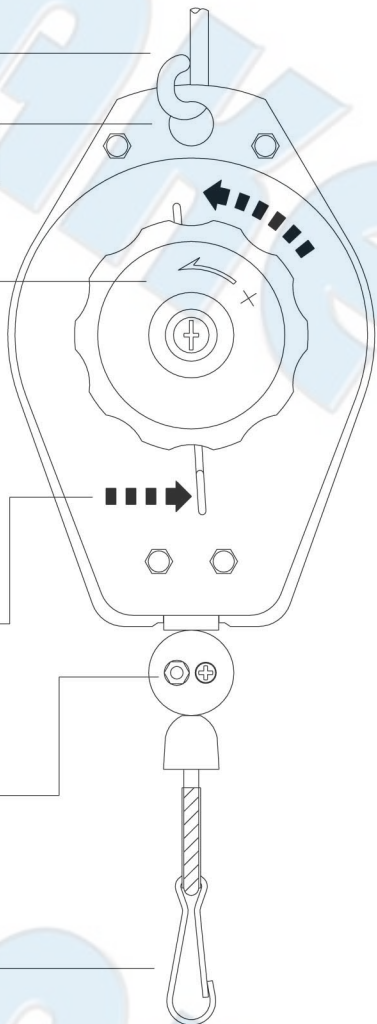
**Only press the spring 1~3 cm
to decrease capacity .**

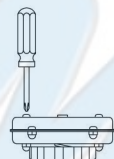
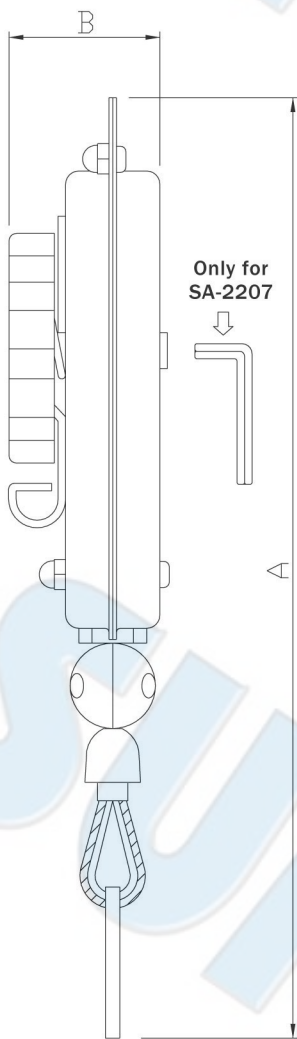
**Loosen the screws and fasten the
ball in a position of rope.**

**Loading the tool with the
closed hook.**



Temperature: -10°C~-50°C



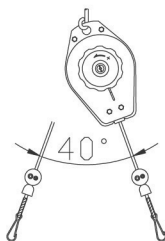


Prohibition of disassembly.

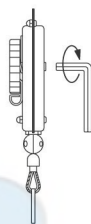


**Don't twist and rub the cordage with cable during travel.
Don't load over its capacity.**

Loading



**Large angle using will
debase the wire rope's life,
Under $\pm 20^\circ$ is better.**



**To increase capacity of SA-2207,
turn the spindle clockwise by the
allen key.**

Model no.	Capacity	Cable Travel (M)	Rope		Rope Dia. (mm)	Weight (kg)	A (mm)	B (mm)
			Sta.	Opt.				
SA-2201	0.3~0.8	1.4	Cable	Nylon	2.5	0.41	240	44
SA-2203	0.6~1.5	1.4	Cable	Nylon	2.5	0.46	240	44
SA-2203-1	1.0~2.0	1.4	Cable	Nylon	2.5	0.53	240	44
SA-2204	1.5~3.0	1.4	Cable	Nylon	2.5	0.55	240	44
SA-2204A	0.8~2.0	1.4		Nylon	4	0.57	260	47
SA-2204B	0.3~1.2	1.4		Nylon	4	0.57	260	47
SA-2207	3.0~5.0	1.3		Cable	3.2	0.81	290	47



EC DECLARATION OF CONFORMITY

We: **SUMAKE INDUSTRIAL CO., LTD.**

4F, No. 351, Yangguang St., Neihu District, Taipei City, Taiwan

declare in sole responsibility that the equipment

Equipment : **SPRING BALANCER**

Model/ Serial No. : **SA-2204A(B)**

to which this declaration applies, complies with these normative documents:

- Machinery Directive: 2006/42/EC

and conforms to the following EN standard,

- EN ISO 12100: 2010

Name and Signature/Position

Mike Su – Managing Director

Date and Place

2013/2/22

Taipei, Taiwan

SA-2204A(B)-D-1308C-YMF

UK DECLARATION OF CONFORMITY

We: **SUMAKE INDUSTRIAL CO., LTD.**
4F, No. 351, Yangguang St., Neihu District, Taipei City, Taiwan

declare in sole responsibility that the equipment

Equipment : **SPRING BALANCER**

Model/ Serial No. : **SA-2204A(B)**

to which this declaration applies, complies with these normative documents:

- **Supply of Machinery (Safety) Regulations 2008**

and conforms to the following BS standard,

- **BS EN ISO 12100: 2010**

Name and Signature/Position



Mike Su – Managing Director

Date and Place

2022/12/1

Taipei, Taiwan