

Operation Manual

SA-22015T, SA-22030T, SA-22050T

Read this manual before use



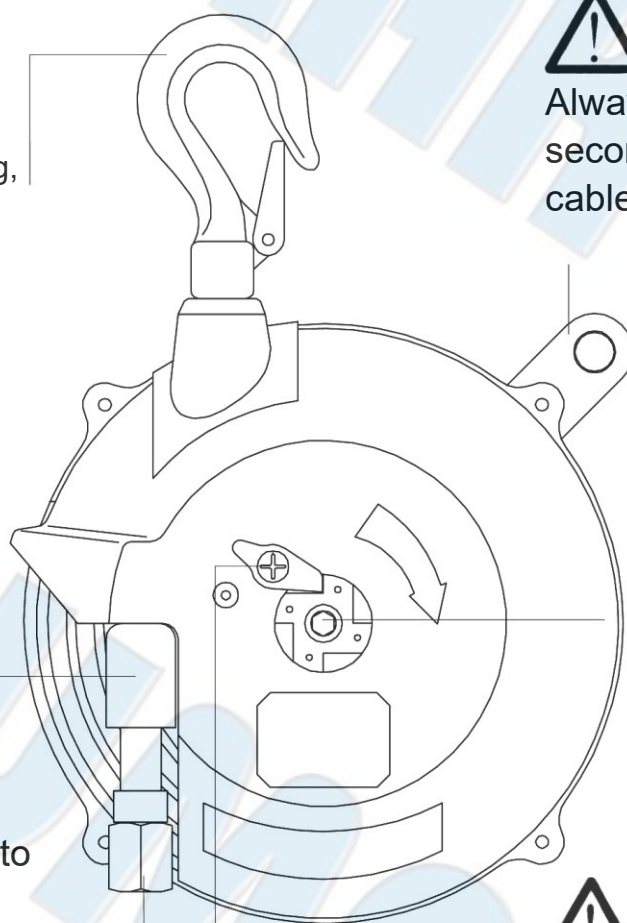
This hook was used for hang,
not to lock tightly.



Always attached a
secondary support
cable or chain.



To loose the two
screw and tighttn, to
adjust the wire




Turn CW. (↻)
For increasing the
spring tension by
allen key.



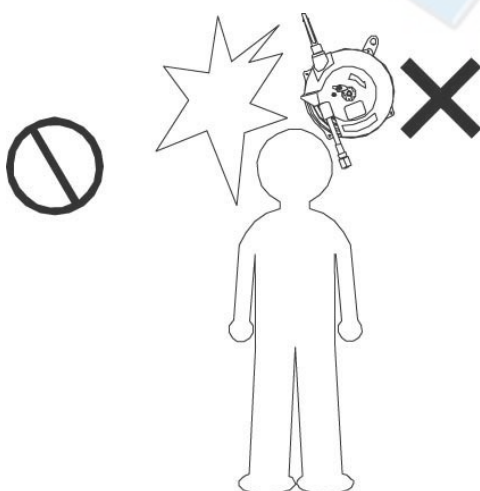
Turn CW.(↻)
For decreasing about 1.0cm
(Keep the allen key and turn
slowly, even don't adjust
under its capacity)

A sling, suspend
the tool here.

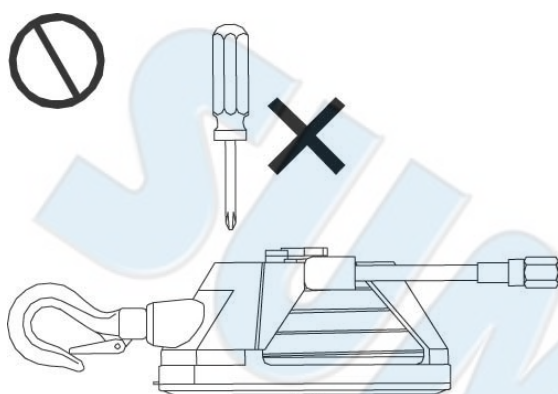
 Caution	 Prohibition
--	--



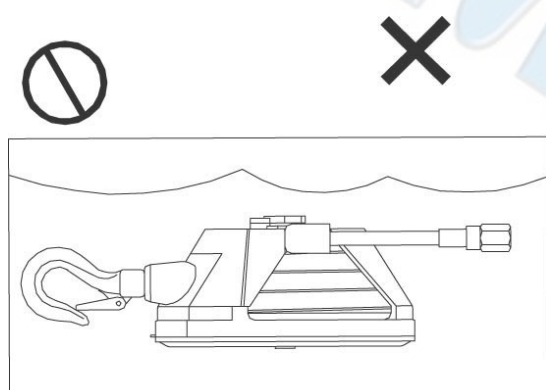
Incorrect use of the spring balancer could cause personal injury. Observe instruction in the manual and use the balancer correctly.



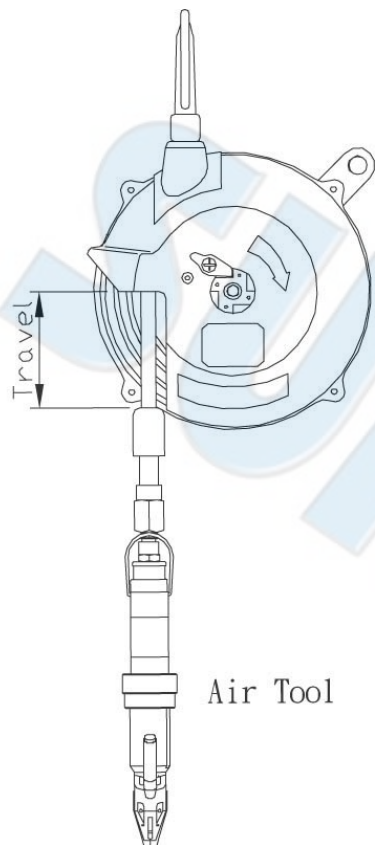
Never stand under the spring balancer.



Prohibition of disassembly.



Never put the spring balancer in fluid.



Air Tool

Don't twist and rub the cordage with cable during travel.

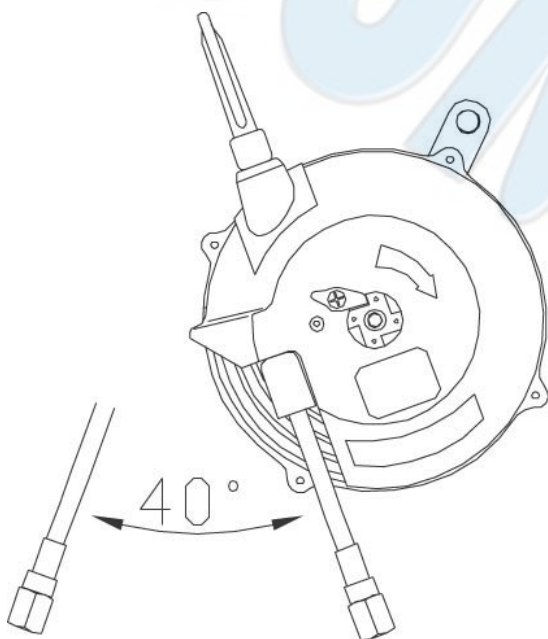
Don't load over its capacity.



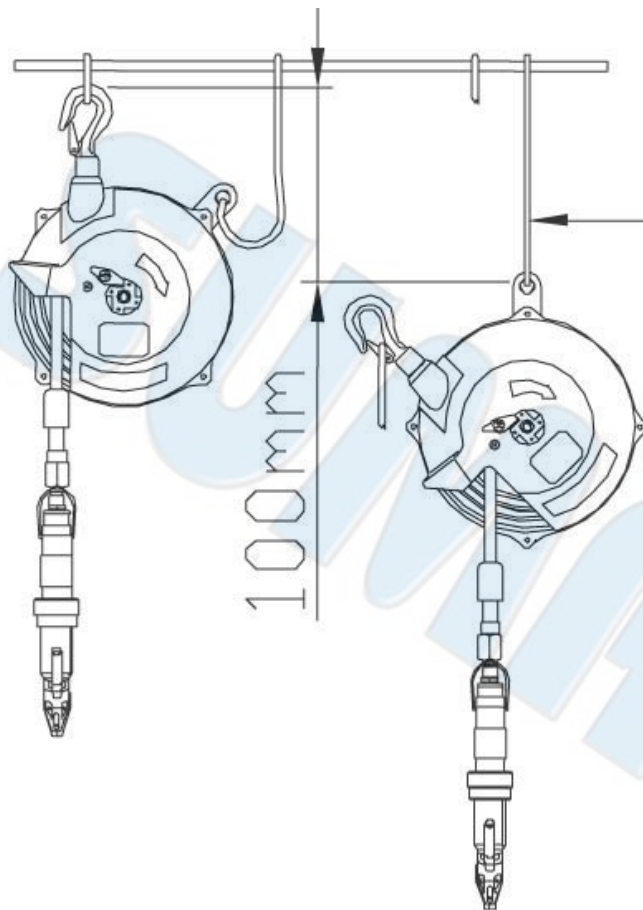
1. Take the tools off while remove the spring balancer, prevent the devise drop down.
2. Please remove the spring balancer and tools if rest for a long time.
3. Remove the spring balancer and devise before arranging the tension.

Application area:

Indoor and normal atmospheric conditions. Temperature range : $-10^{\circ}\text{C} \sim +40^{\circ}\text{C}$



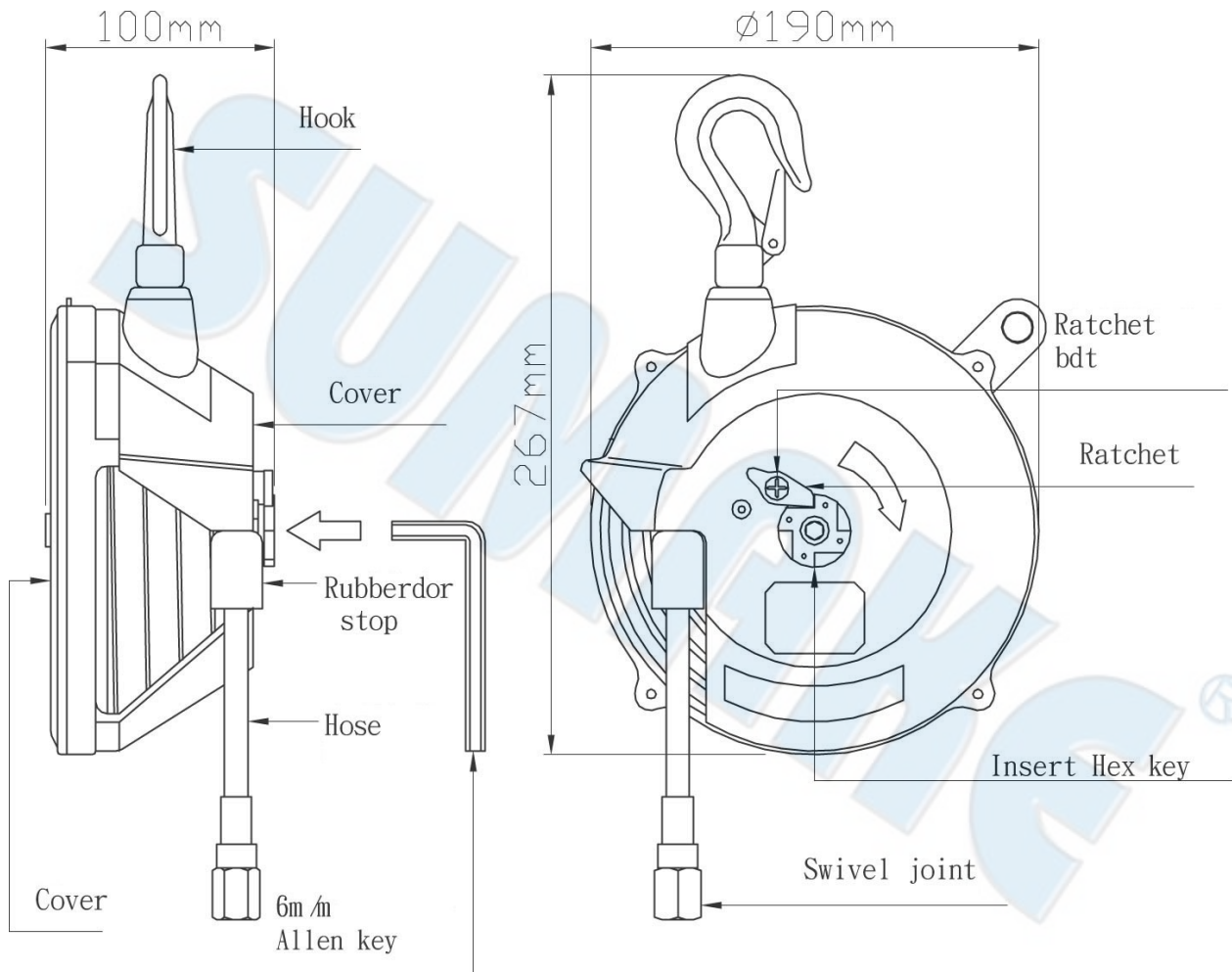
Large angle using will debase the wire rope's life, Under $\pm 20^{\circ}$ is better.



Safety support
cable or chain
is required but
not provided
with the product.

Leave some slack in the secondary
support cable or chain to allow the
balancer to rotate freely.

The slack must be a suitable length so
that the balancer will stop within 10cm
when falling in case of failure of the
hanger or the fitting.



Model	Capacity	Weight	Travel
SA-22015T	0.5 – 1.5 kg	1.8 kg	1.4 m
SA-22030T	1.5 – 3.0 kg	1.9 kg	1.4 m
SA-22050T	3.0 – 5.0 kg	2.1 kg	1.4 m

1. Installation

- (1) Attached the spring balancer to the steady place.
- (2) Please attached a secondary support cable and install to the steady position.
- (3) Install the device within the capacity to the bottom hook.
- (4) Please adjust the tension within the capacity after install the device.

2. Checks before use

- (1) The hanger and bottom hook is steady and turn swivel.
- (2) The cable is complete.
- (3) The ratchet spring and spindle is steady.
- (4) The appearance is complete, no any damage.



EC DECLARATION OF CONFORMITY

We: **SUMAKE INDUSTRIAL CO., LTD.**

4F, No. 351, Yangguang St., Neihu District, Taipei City, Taiwan

declare in sole responsibility that the equipment

Equipment : **AIR PU HOSE BALANCER**

Model/ Serial No. : **SA-22015T(22030T)(22050T)**

to which this declaration applies, complies with these normative documents:

- Machinery Directive: 2006/42/EC

and conforms to the following EN standard,

- EN ISO 12100: 2010

Name and Signature/Position

Mike Su – Managing Director

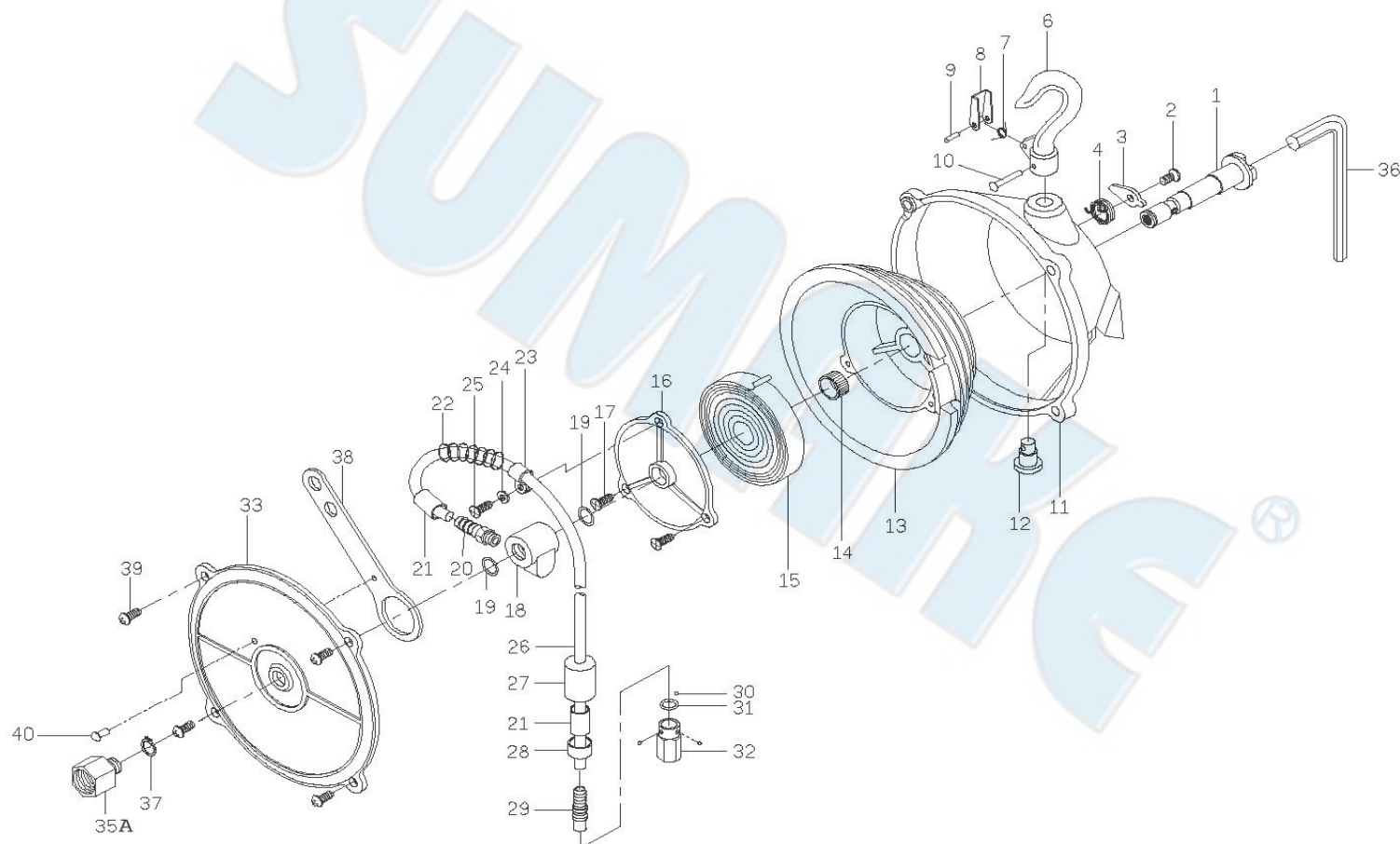
Date and Place

2013/2/22

Taipei, Taiwan

SA-22015T(22030T)(22050T)-D-1308C-YMF

SA-22015T AIR PU HOSE BALANCER (0.5-1.5KG)
SA-22030T AIR PU HOSE BALANCER (1.5-3.0KG)
SA-22050T AIR PU HOSE BALANCER (3-5KG)



PARTS LIST

No.	Parts No.	Description	Q'ty
1	SA22030T-01	Spindle	1
2	SA22030T-02	Screw	1
3	SA22030T-03	Ratchet	1
4	SA22030T-04	Ratchet Spring	1
6~12	SA22030T-11S	Casing Set [Incl. 6, 7, 8, 9, 10, 11, 12]	1
13~15	SA22015T-13	Spring Plate Set [Incl. 13, 14, 15] [SA-22015T]	1
	SA22030T-13	Spring Plate Set [Incl. 13, 14, 15] [SA-22030T]	1
	SA22050T-13	Spring Plate Set [Incl. 13, 14, 15] [SA-22050T]	1
16	SA22030T-16	Spring Cover	1
17	SA22030T-17	Screw	3
18~32	SA22030T-18	Hose Assembly [Incl. 18, 19(2), 20, 21(2), 22, 23, 24, 25, 26, 27, 28, 29, 30(3), 31, 32]	1
33	SA22030T-33	Cover	1
35A	SA22030T-35A	Joint	1
36	SA22030T-36	Spanner Key 6 mm	1
37	SA22030T-37	C-Ring	1
38	SA22030T-38	Safety Loop	1
39	SA22030T-39	Screw	4
40	SA22030T-40	Rivet	1

NOTE

SUMAKE®

SUMAKE®