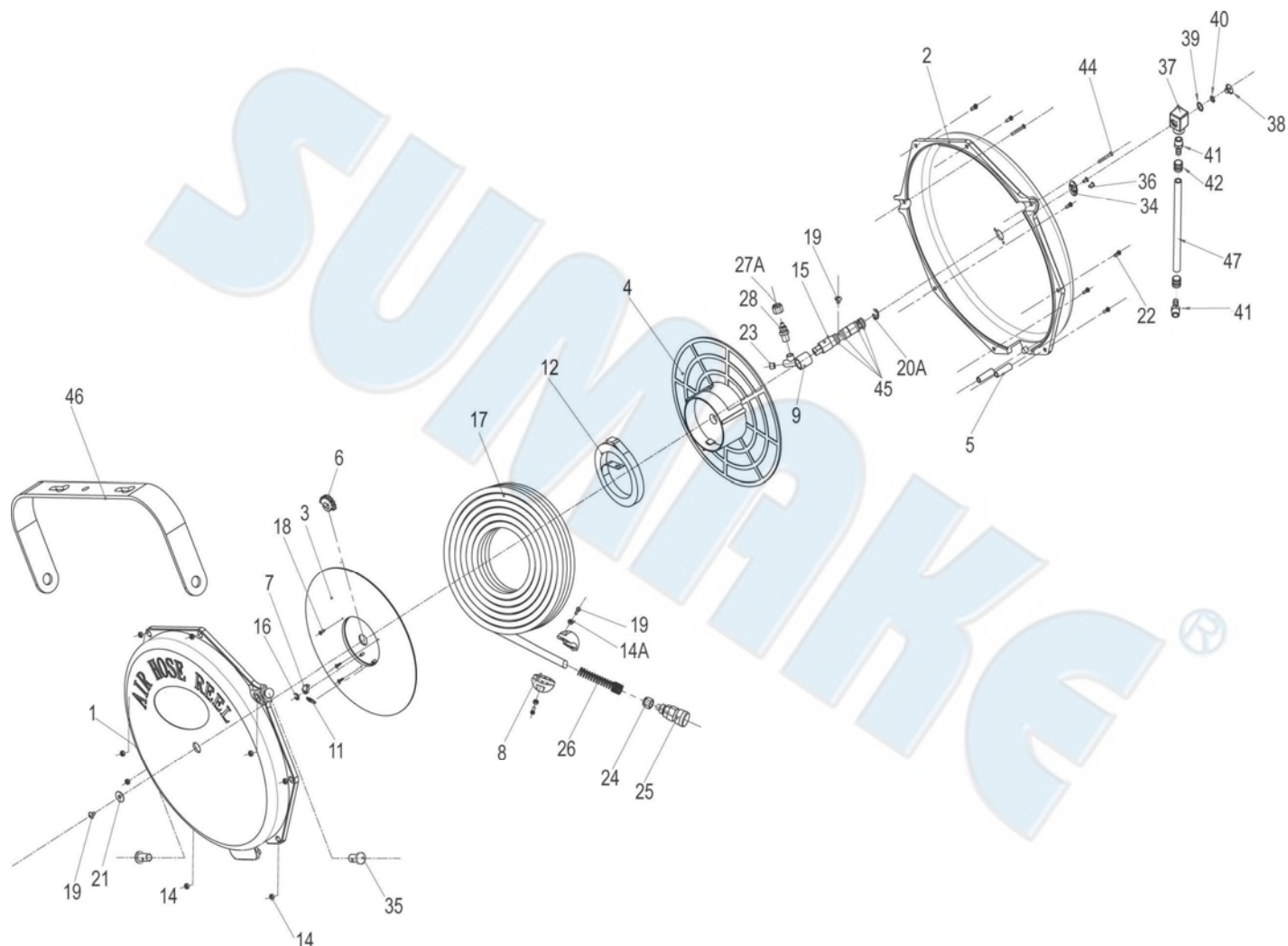


HR-0183 AIR PU HOSE BALANCER (8X12MMX8M)



PARTS LIST

No.	Parts No.	Description	Q'ty
1	HR0181-01	Outer Shell (A)	1
2	HR0181-02	Outer Shell (B)	1
3	HR0181-03	Wheel Disc Cover	1
4	HR0181-04	Wheel Disc Seat	1
5	HR0181-05	Fastening Piece	2
6	HR0181-06	Gear	1
7	HR0181-07	Gear Check	1
8	HR0183-08	Fixing Rubber Ball [HR-0183]	2
9	HR0181-09	Air Inlet Bushing	1
11	HR0181-11	Spring	1
12	HR0183-12	Spring Plate [HR-0183]	1
14	HR0183-14	Nut (M4) [HR-0183]	8
14A	HR0183-14A	Nut [HR-0183]	2
15	HR0181-15	Shaft Spindle	1
16	HR0181-16	E-Ring	1
17	HR0183-17	PU Hose [HR-0183]	1
18	HR0181-18	Screw	3
19	HR0183-19	Screw [HR-0183]	4
20A	HR0181-20A	Washer	2
21	HR0181-21	Washer	1

No.	Parts No.	Description	Q'ty
22	HR0181-22	Screw [HR-0183]	8
23	HR0181-23	Stopper (1/8")	1
24	HR0183-24	Screw Nut [HR-0183]	1
25	HR0183-25	Air Coupling [HR-0183]	1
26	HR0183-26	Spring (8x12) [HR-0183]	1
27A	HR0183-27A	Nut [HR-0183]	1
28	HR0183-28	Adaptor [HR-0183]	1
34	HR0181-34	Square Clamp	1
35	HR0181-35	Fixing Pin	2
36	HR0181-36	Rivet	2
37	HR0181-37	Elbow	1
38	HR0181-38	Screws	1
39	HR0181-39	O-Ring	1
40	HR0181-40	O-Ring	1
41	HR0181-41	1/4" PT + 5/6" Swivel Fitting	2
42	HR0181-42	Brass Fitting	1
44	HR0181-44	Screw	2
45	HR0181-45	O-Ring	4
46	HR0181-46	Assembly Frame	1
47	HR0181-47	PU Hose (8x12)	1

HR-0181, HR-0183, HR-0185 AIR PU HOSE BALANCER

FEATURES:

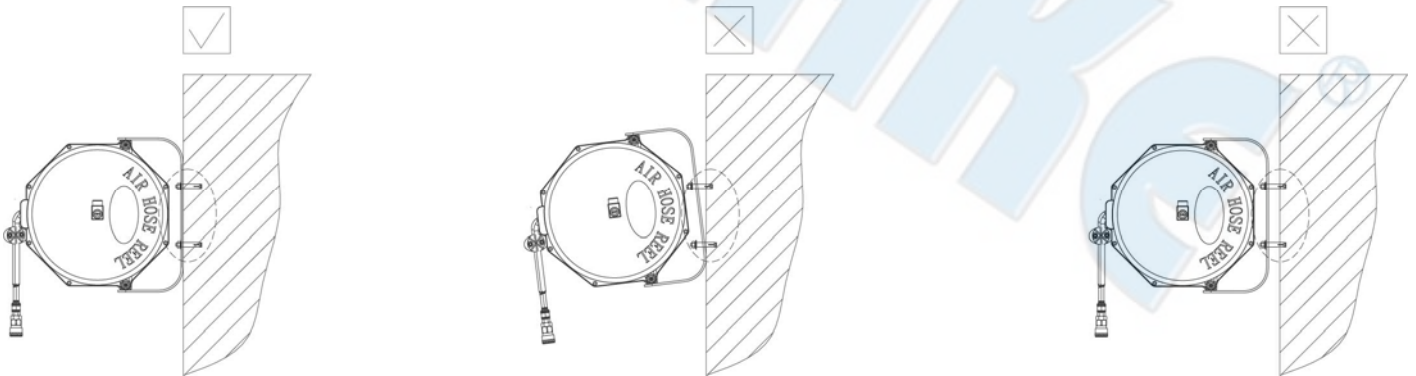
- Material : PP
- Easily installing on the wall or the ceiling.
- Installed reel can rotate within 190°.

SPECIFICATION:

- Polyurethane braid air hose.
- Working pressure : 200 PSI (13.7 Bar)

INSTALLATION:

1. Mount the retractable reel to a bench or wall with 2 bolts and nuts.
2. When needed attach the lead hose to the air inlet.
3. Connect the desired quick connector or tool to the outlet fitting. If male thread for outlet, make sure to seal the threads with PTFE tape or o-ring.



OPERATION:

1. To extend hose, pull hose to desired length. The hose reel must be making an audible "click" when released to maintain its length. It may be necessary to pull hose beyond desired length to keep it from automatically retracting.
2. To retract, pull hose until clicking stops. Hose will then automatically retract.

WARNING

1. Warning indicates a potentially hazardous situation which, if not avoided, could result in death or serious injury.
2. Disconnect power and release all pressure from the system before attempting to install, service, relocate or perform any maintenance.
3. Incorrect use like connecting with the heavy fitting or tool while pulling out whole hose may cause hose damage and not retracted.
4. Suggest to use 70~80% of whole length as the working hose length.

DANGER

1. Danger indicates an imminently hazardous situation which, if not avoided, will result in death or serious injury.
2. This product is specifically designed for compressed air service only. Use with any other material (liquid or gas) is a misapplication and not permitted. Use or injection of certain hazardous liquids or gases in the system (such as oxygen, alcohol or liquid petroleum gas) will harm the unit and result in a combustible condition or hazardous external leakage. Misapplication will void all warranties and manufacturer's responsibilities.

SAFETY GUIDELINES

This manual contains information that is very important to know and understand. This information is provided for safety and to prevent equipment problems. To help recognize this information, observe the following symbols.

CAUTION

Caution indicates a potentially hazardous situation which, if not avoided, may result in minor or moderate injury.

NOTICE

Notice indicates important information, that if not followed, may cause damage to equipment.

