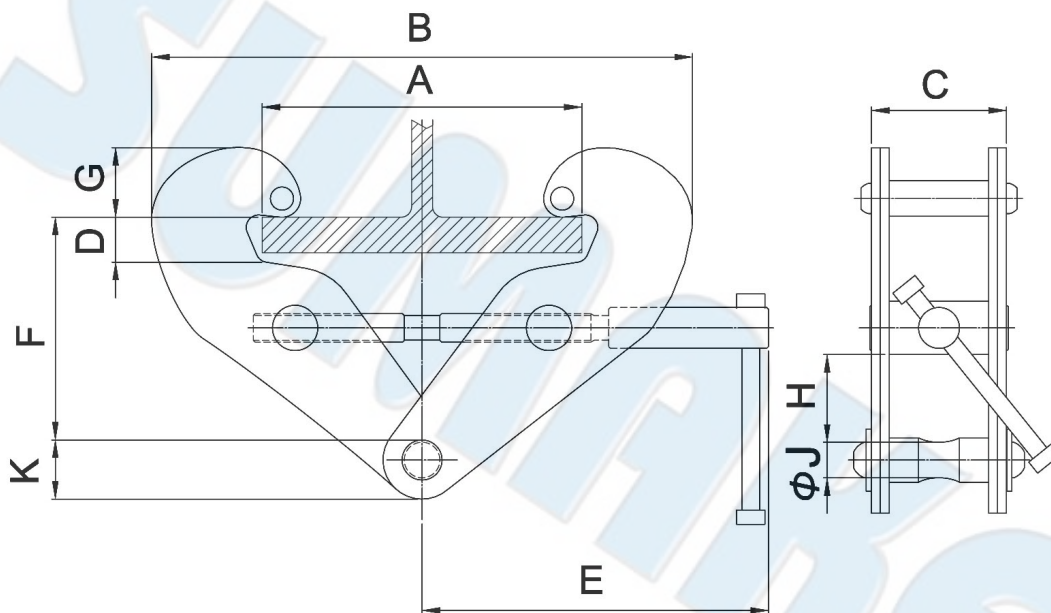
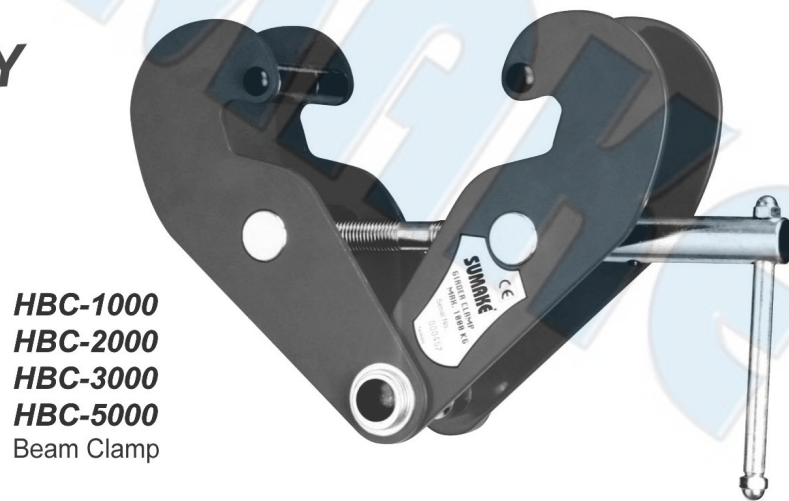


# Beam Clamp

## SUMAKE Heavy Duty Beam Clamp

- SUMAKE beam clamp is suitable for the attachment to steel beams as a semi permanent lifting point to be used in conjunction with hoist blocks, tirlors, ratchet hoists etc
- The clamp can also be used for the lifting , transferring of steel beams and as a pulling clamp
- This beam clamp is fitted with a screw spindle which allows easy adjustment and high clamping force to the various flange sizes within its capacity
- The safety factor up to 5 times of S.W.L.
- Low headroom because of the built-in suspension bar

## HEAVY DUTY



|           |           |        |         |     |    |     |         |       |     |    |                 | unit:mm           |
|-----------|-----------|--------|---------|-----|----|-----|---------|-------|-----|----|-----------------|-------------------|
| Model No. | Cap.(ton) | A      | B       | C   | D  | E   | F       | G     | ØJ  | K  | Net Weight (kg) | Gross Weight (kg) |
| HBC-1000  | 1         | 75-210 | 182-328 | 77  | 26 | 190 | 144-117 | 52-38 | Ø20 | 34 | 4               | 4.5               |
| HBC-2000  | 2         | 75-210 | 182-328 | 85  | 26 | 190 | 144-117 | 52-38 | Ø20 | 34 | 4.6             | 5.2               |
| HBC-3000  | 3         | 75-305 | 214-460 | 107 | 35 | 240 | 224-179 | 58-40 | Ø22 | 42 | 8.4             | 9.1               |
| HBC-5000  | 5         | 75-305 | 214-460 | 121 | 35 | 240 | 220-175 | 58-40 | Ø28 | 45 | 10              | 10.7              |

HBC-I-1107A-W6



## EC DECLARATION OF CONFORMITY

We: **SUMAKE INDUSTRIAL CO., LTD.**

**4F, No. 351, Yangguang St., Neihu District, Taipei City, Taiwan**

declare in sole responsibility that the equipment

Equipment : **HEAVY DUTY BEAM CLAMP 1(2)(3)(5) TON**

Model/ Serial No. : **HBC-1000(2000)(3000)(5000)**

to which this declaration applies, complies with these normative documents:

- Machinery Directive: 2006/42/EC

and conforms to the following EN standard,

- EN ISO 12100: 2010
- EN 13157:2004+A1:2009

Name and Signature/Position

Mike Su – Managing Director

Date and Place

2014/6/30

Taipei, Taiwan