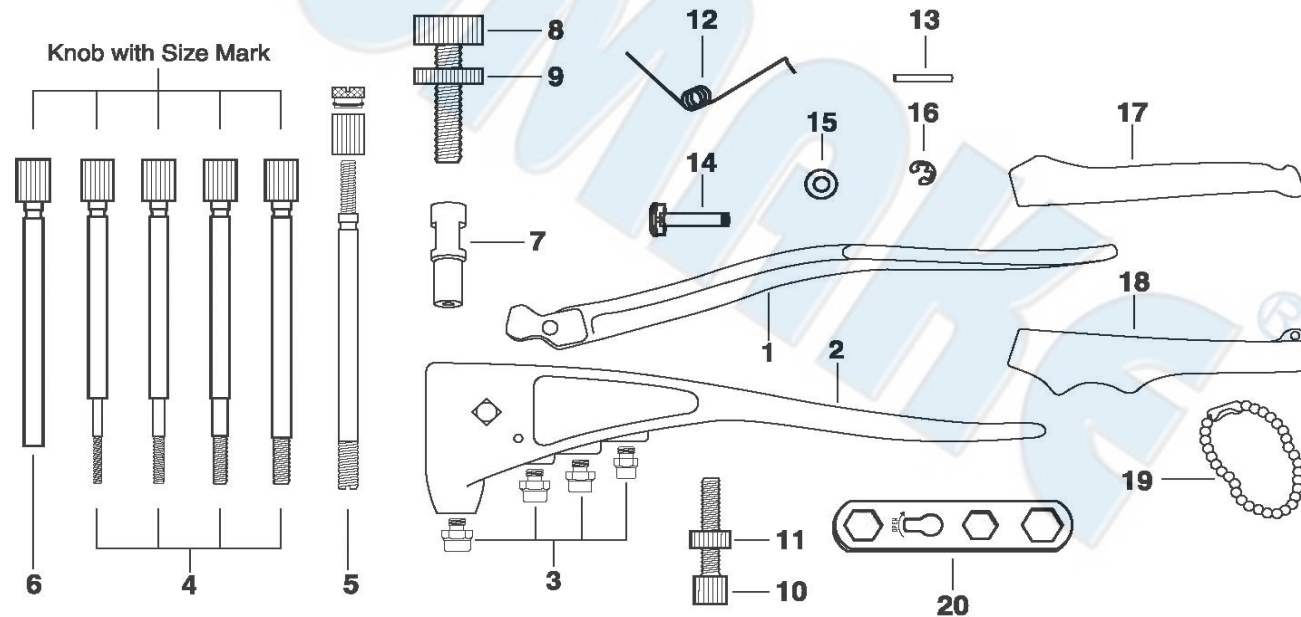


HT-6861M HT-6861S

INDUSTRIAL HAND RIVET NUT TOOL (M3~M6) INDUSTRIAL HAND RIVET NUT TOOL (#6-32~#1/4-20)



PARTS LIST

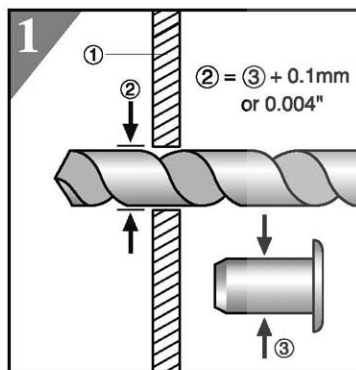
No.	Parts No.	Description	Q'ty
1	HT6861-01	Upper Handle	1
2	HT6861-02	Aluminum Body	1
3	HT6861-03A	Nosepiece, for M3 Rivet Nut and Rivet Bolt/Stud	1
	HT6861-03B	Nosepiece, for M4 Rivet Nut and Rivet Bolt/Stud	1
	HT6861-03C	Nosepiece, for M5 Rivet Nut and Rivet Bolt/Stud	1
	HT6861-03D	Nosepiece, for M6 Rivet Nut and Rivet Bolt/Stud	1
	HT6861-03E	Nosepiece, for #6 Rivet Nut and Rivet Bolt/Stud	1
	HT6861-03F	Nosepiece, for #8 Rivet Nut and Rivet Bolt/Stud	1
	HT6861-03G	Nosepiece, for #10 Rivet Nut and Rivet Bolt/Stud	1
	HT6861-03I	Nosepiece, for 1/4" Rivet Nut and Rivet Bolt/Stud	1
4	HT6861-04A	Threaded Mandrel, for M3x0.5 Rivet Nut	1
	HT6861-04B	Threaded Mandrel, for M4x0.7 Rivet Nut	1
	HT6861-04C	Threaded Mandrel, for M5x0.8 Rivet Nut	1
	HT6861-04D	Threaded Mandrel, for M6x1.0 Rivet Nut	1
	HT6861-04E	Threaded Mandrel, for 6-32 Rivet Nut	1
	HT6861-04F	Threaded Mandrel, for 8-32 Rivet Nut	1
	HT6861-04G	Threaded Mandrel, for 10-24 Rivet Nut	1
	HT6861-04H	Threaded Mandrel, for 10-32 Rivet Nut	1
	HT6861-04I	Threaded Mandrel, for 1/4-20 Rivet Nut	1
	HT6861-04J	Threaded Mandrel, for 1/4-28 Rivet Nut (Option)	1
5	HT6861-05A	Threaded Mandrel, 3-PC Type, for M8x1.25 Alum. Rivet Nut (Option)	1
	HT6861-05B	Threaded Mandrel, 3-PC Type, for 5/16-18 Alum. Rivet Nut (Option)	1

No.	Parts No.	Description	Q'ty
5	HT6861-05C	Threaded Mandrel, 3-PC Type, for 5/16-24 Alum. Rivet Nut (Option)	1
	HT6861-05D	Threaded Mandrel, 3-PC Type, for 3/8-16 Alum. Rivet Nut (Option)	1
6	HT6861-06A	Threaded Socket, for M4x0.7 Rivet Bolt/Stud (Option)	1
	HT6861-06B	Threaded Socket, for M5x0.8 Rivet Bolt/Stud (Option)	1
	HT6861-06C	Threaded Socket, for 8-32 Rivet Bolt/Stud (Option)	1
	HT6861-06D	Threaded Socket, for 10-24 Rivet Bolt/Stud (Option)	1
	HT6861-06E	Threaded Socket, for 10-32 Rivet Bolt/Stud (Option)	1
7	HT6861-07	Collet Case	1
8	HT6861-08	Adjusting knob	1
9	HT6861-09	Lock Nut	1
10	HT6861-10	Stroke Bolt	1
11	HT6861-11	Stroke Nut	1
12	HT6861-12	Torsion Spring	1
13	HT6861-13	Torsion Spring Pin	1
14	HT6861-14	Fulcrum Pin	1
15	HT6861-15	Fulcrum Pin Bearing	1
16	HT6861-16	Snap Ring	1
17	HT6861-17	Upper Grip	1
18	HT6861-18	Lower Grip	1
19	HT6861-19	Bead Chain Lock	1
20	HT6861-20	Wrench	1

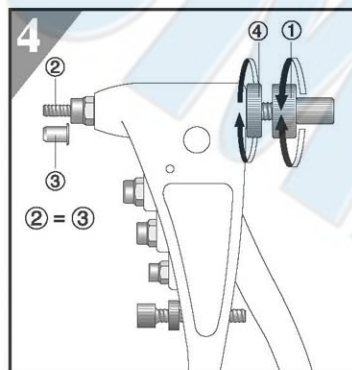
OPERATION INSTRUCTION

For Setting M3 ~ M6 or #6 ~ 1/4 Rivet Nuts

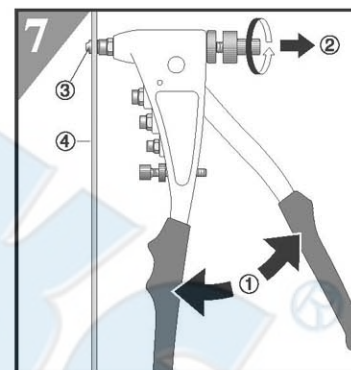
PARTS LIST ON REVERSE SIDE



- 1) Drill a Hole on Work Piece
①, Hole diameter ②
should be 0.1mm or 0.004"
larger than Rivet Nut
diameter ③.



- 4) Rotate Adjusting Knob ①
to adjust thread length ②
of Threaded Mandrel to
be same as Rivet Nut
length ③, then turn down
the Lock Nut ④ to lock
Adjusting Knob ①
position firmly.



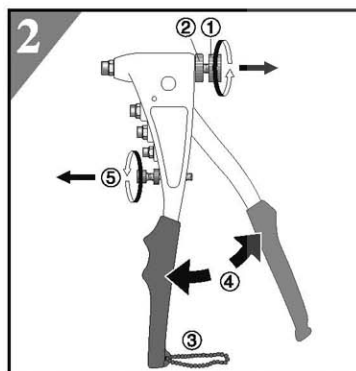
- 7) Release Tool Handles ①
fully and rotate Threaded
Mandrel Knob ② to unscrew
Threaded Mandrel from the
installed Rivet Nut ③ .
Now the Rivet Nut thread
are built up securely in the
Work Piece ④ .

NOTE

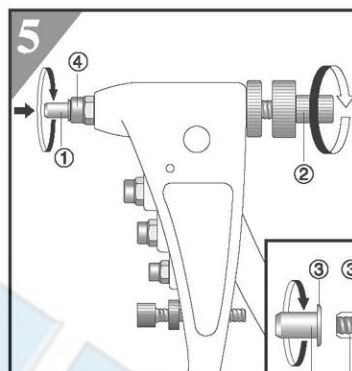
If the next fastening Rivet Nut is same size as previous one, Do Not Need Any Adjustment!

Just repeat above 5) to screw Rivet Nut onto Threaded Mandrel, squeeze Tool Handles to Set Rivet Nut until Upper Handle touches Stroke Bolt, finally follow above 7) to unscrew Threaded Mandrel from the installed Rivet Nut.

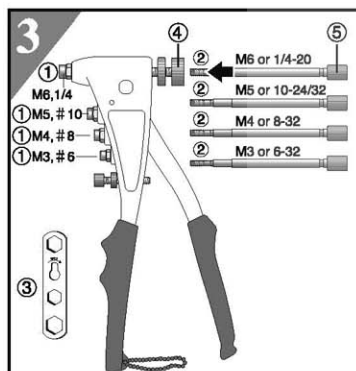
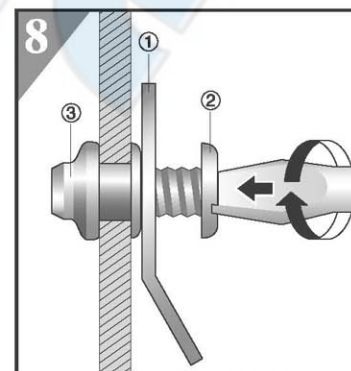
- 8) Fasten an Object ① by screwing a Bolt or a Screw ② to the installed Rivet Nut ③ .



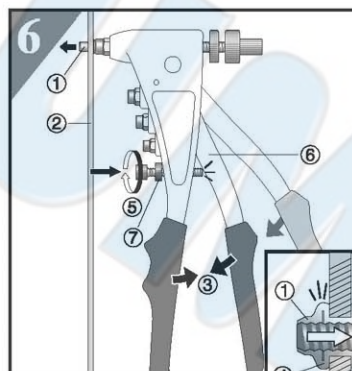
- 2) Close and lock Tool
Handles, turn up Adjusting
Knob ① and Lock Nut ② ,
then loose Bead Chain
Lock ③ to open Tool
Handles fully ④ , and turn
down the Stroke Bolt and
Stroke Nut ⑤ to the
lowest position.



- 5) Screw the Rivet Nut ①
onto Threaded Mandrel by
turning either Rivet Nut ①
or Threaded Mandrel Knob ② until Rivet Nut head ③
touches Nosepiece ④ .
The Rivet Nut end should
be flush with the
Threaded Mandrel
end.



- 3) Select Nosepiece ① and
Threaded Mandrel ② to be
same size as Rivet Nut
thread size, exchange
Nosepieces ① by Wrench
③, and insert Threaded
Mandrel ② into Adjusting
Knob ④ until Threaded
Mandrel Knob ⑤ touches
Adjusting Knob ④.



- 6) Insert the screwed Rivet Nut ① into the drilled Hole of Work Piece ② ,
squeeze Tool Handles ③ until Rivet Nut is installed firmly by forming a
bulge ④ against the back of Work Piece ② ; still hold Tool Handles ③
and adjust Stroke Bolt ⑤ up to touch Upper Handle ⑥, then turn up
Stroke Nut ⑦ to lock Stroke Bolt ⑤ position. Now the proper Stroke
is built up to protect the Rivet Nut thread and this Rivet Nut Tool as well.

NOTE

A proper Stroke ensures Rivet Nut thread to be installed securely,
SO THE PILOT TEST IS ALWAYS RECOMMENDED BEFORE
INSTALLING DIFFERENT SIZES OF RIVET NUT.