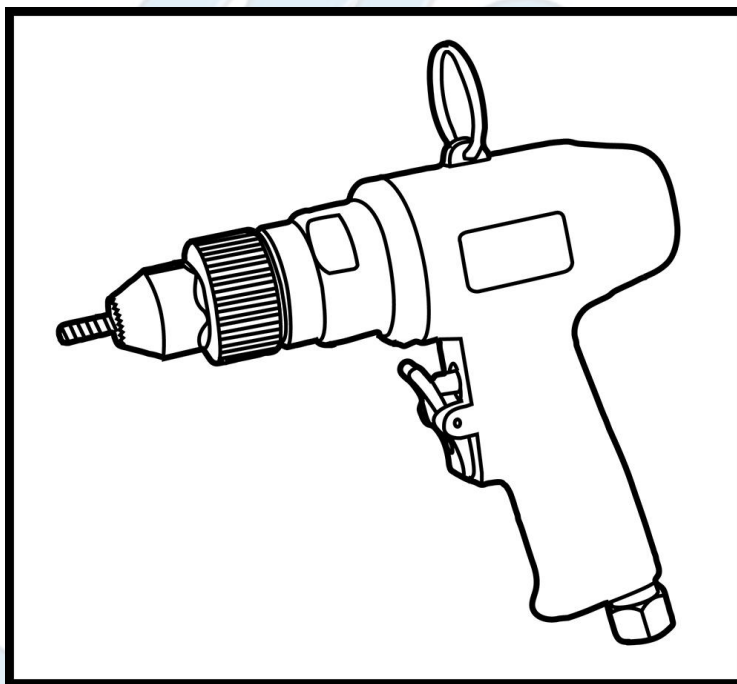




SUMAKE *PNEUMATIC TOOLS*



Air Riveting Nut Tool ST-RN5010

Specification:

Rivet Nut Setting Capacity	M8, M10, 5/16"
Free Speed	450 RPM
Overall Length	8" (205mm)
Air Consumption	8.5cfm (240l/min)
Air Inlet (PT)	1/4" (6.35 mm)
Air Hose (I.D.)	3/8" (10 mm)
Air Pressure	90 psi (6.3 bar)
Net Weight	3.3Lb (1.5kg)

Noise and Vibration:

Vibration EN ISO 20643	Noise EN ISO 15744	Remark
No Load: 3.5 m/s ²	Sound Pressure Level No load: 91 dB(A)	Please always wear ear protector at environment noise level > 80 dB(A) due to risk of impaired hearing!
	Sound power level No load: 102 dB(A)	
Uncertainty K= 1.5 m/s ²	Uncertainty K= 3dB	

SUMAKE INDUSTRIAL CO., LTD

4F,NO.351,Yanguang St.,Neihu District TAIPEI, TAIWAN, ZIP:114-91

ST-RN5010-S-2112A-OPF



EC DECLARATION OF CONFORMITY

We: **SUMAKE INDUSTRIAL CO., LTD.**

4F, No. 351, Yangguang St., Neihu District, Taipei City, Taiwan

declare in sole responsibility that the equipment

Equipment : **AIR RIVETING NUT TOOL**

Model/ Serial No. : **ST-RN5010**

to which this declaration applies, complies with these normative documents:

- Machinery Directive: 2006/42/EC

and conforms to the following EN standard,

- EN ISO 12100: 2010
- EN ISO 11148-1:2011

Name and Signature/Position

Mike Su – Managing Director

Date and Place

2021/12/24

Taipei, Taiwan

Foreword

We are the manufacturer and exporter of air tools since established. We have devote all our efforts in improving quality and tools' life. As well as the noise and vibration of tools. Bring all of you working efficiencies, profits, and enjoy using the tool is our principle.

Operator's instruction

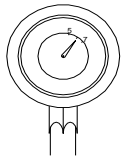
1. Main Applications

This tool has a strong traction power and light weight only 1.5 kgs. All rivets from 3/32" to 3/16" in all kind of material can be applied with this tool. This advantage performance make you job easily.

2. Cautions for Use

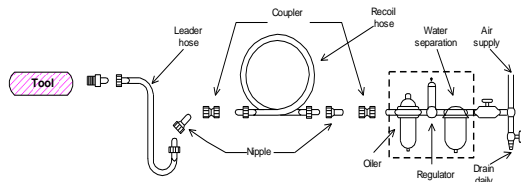
2-1 Air pressure

Maximum performance is displayed at the proper sanding speed, obtainable at a gauge pressure of 6.2 bar. Range-wise, this is an air pressure from 5 to 7 bar (70 to 100 psi)



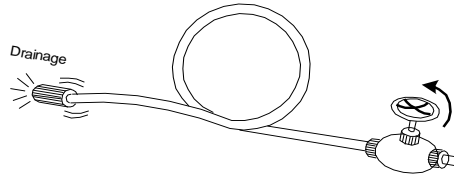
2-2 Air line

Use a 3/4" air hose between the compressor and the tool. Compressed air is cooled and its water content separated, as soon as the air leaves the compressor. A portion of the water content, however, is condensed in the piping, and can enter the tool mechanism, and may cause trouble. So, install an air filter and on oiler between the compressor and the tool. Use a 3 HP or larger compressor for each sander.



2-3 Air hose

Clean the hose with a blast of compressed air before connecting the hose to air tool. This will prevent both moisture and dust within the hose from entering the tool and causing possible rust or malfunction. To compensate for unusual long hose (over 25 ft), the line pressure should be increased accordingly.



2-4 Inserted tools

Use only the socket or adapter which are in good condition for use. The intended socket or adapter for this air tool could be stated "Square Drive" on the specification list.

2-5 The approved eye protector, ear-muff, mouth-muffle, and gloves shall be worn when operate this tool.

2-6 The working place shall be ventilative.

2-7 Release the on-off device in the case of energy supply failure.

3. Operation Method

3.1 On-off device

The on-off device is on the inner or outer contour of the grip. It is a "hold-to-run" type. This tool stops rotation within few seconds after releasing the lever. For the sake of safety, place it on a level plate or on hanger after it completely stops.

3.2 Torque Adjuster

You can adjust the torque by rotating the knob which is indicated by 1 to 6. "1" indicates the

smallest torque output and "6" indicates the largest torque output.

3.3 Rotating Direction

One shall make sure the direction of rotation before actuate this tool. The "F" indicates forward and the "R" indicates reverse. Forward is defined as clockwise direction seen from the operator position.

4. Maintenance

4-1 Lubrication

Before connecting the hose, apply 4 or 5 drops of #60 spindle oil at the air inlet. Use of a thicker oil can lead to reduced performance or malfunction. If a thicker oil is used by accident, wash it away immediately. Also, every 3 or 4 hours of operation, oiling is necessary.

4-2 Storage

Avoid storing the tool in a location subject to high humidity. If the tool is left as it is used, the residual moisture inside the tool can cause rust. Before storing and after operation, oil the tool at the air inlet with spindle oil and run it for a short time.

4-3 Disposal

If the tool is too seriously damaged to be used anymore, drop it in a resource recycling can. Never drop it into fire.

4-4 Ordering service Parts

For further operational and handling information or for replacement of parts and components, contact the sale agent from whom you purchased the tool or the service division of our company.

* In ordering parts and components, give each part number, name and quantity.

Warning

1. The power tool shall not be used in potentially explosive atmospheres.
2. Disconnect the air hose before changing or adjusting any inserted tools.
3. Prevent long hair or loose clothing from drawing in while operate this tool.
4. Keep your body in a well balanced position and

always wear gloves to reduce the risk of crushing caused by torque between handle and workpiece.

5. Unexpected direction of rotating could cause a hazardous situation.

6. Slip/Trip/Fall is a major reason of serious injury or death. Beware of excess hose left on the walking or work surface.

7. Wearing eye/face protector could reduce the danger to person from high speed splinters being emitted from this tool in the case of inserted tool failure or emitted from the workpiece.

8. Wearing mouth-muff could avoid inhaling dust or handling debris from work process that can be harmful to your health.

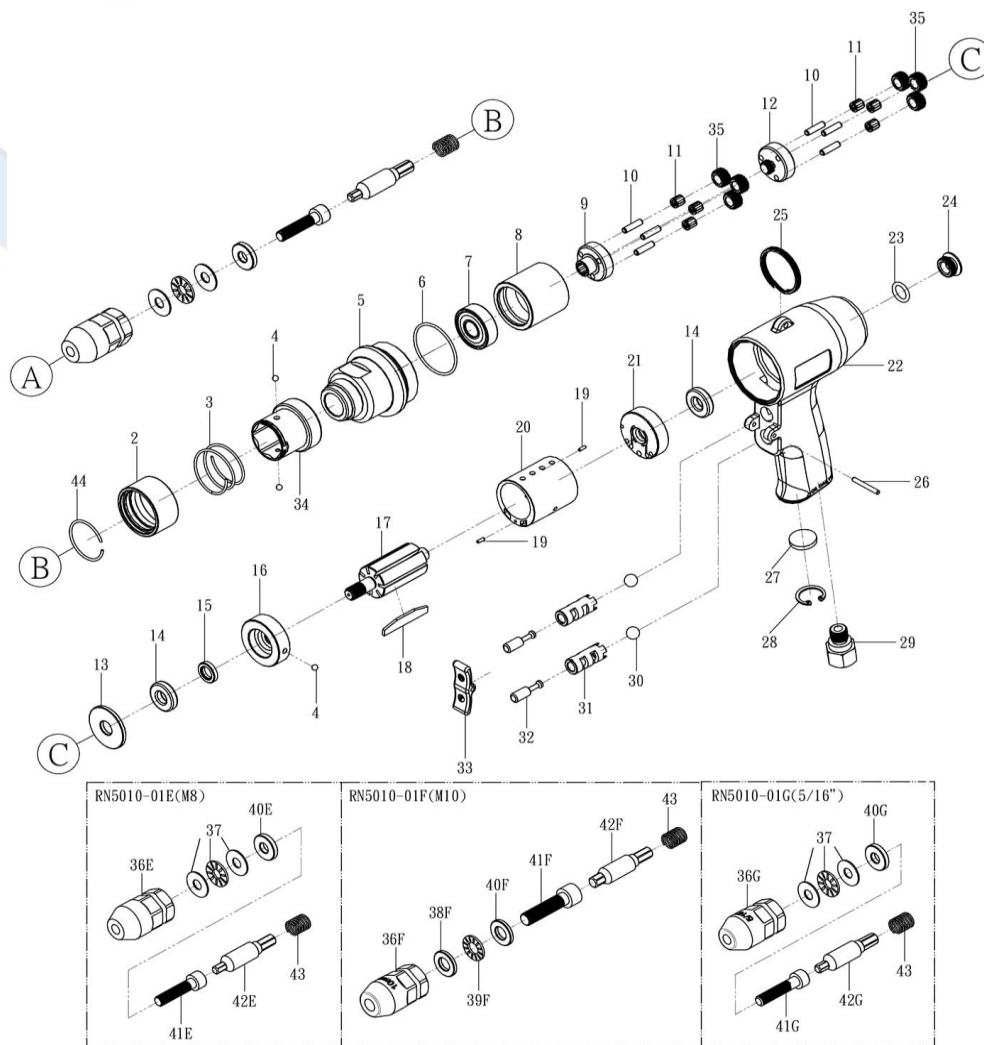
9. Excessive high air pressure and too much free rotation may speed the wear of this tool and might cause danger situation.



ST-RN5010-I-2112A-OP

ST-RN5010

AIR RIVETING NUT TOOL



PARTS LIST

No.	Parts No.	Description	Q'ty
1	RN5010-01E	Pull Set M8	1
	RN5010-01F	Pull Set M10	1
	RN5010-01G	Pull Set 5/16"	1
2	RN5008-02	Bushing	1
3	RN5008-03	Spring	1
4	RN5008-04	Steel Ball (Φ4mm)	3
5	RN5008-05	Front Cap	1
6	RN5008-06	O-Ring (AS-568-029)	1
7	RN5008-07	Ball Bearing (6201-2Z)	1
8	RN5008-08	Gear Ring	1
9	RN5010-09	Gear Seat	1
10	RN5008-10	Pin (Φ4x16)	6
11	RN5010-11	Ball Bearing	6
12	RN5010-12	Gear	1
13	RN5008-13	Washer	1
14	RN5008-14	Ball Bearing (R6)	2
15	RN5008-15	Oil Seal	1
16	RN5008-16	Front Plate	1
17	RN5008-17	Rotor	1
18	RN5008-18	Rotor Blade	7
19	RN5008-19	Pin (Φ2x16)	2
20	RN5008-20	Cylinder	1
21	RN5008-21	Rear Plate	1
22	RN5008-22	Handle	1
23	RN5008-23	O-Ring (P11.2)	1
24	RN5008-24	Screw	1
25	RN5008-25	Hook	1
26	RN5008-26	Pin (Φ3x24)	1

27	RN5008-27	Muffler	1
28	RN5008-28	Stopping Wheel	1
29	RN5008-29A	Air Inlet (PT19)	1
	RN5008-29B	Air Inlet (NPT18)	1
30	RN5008-30	Plastic Ball (Φ9)	2
31	RN5008-31	Bushing	2
32	RN5008-32	Rod	2
33	RN5008-33	Switch Lever	1
34	RN5008-34	Bushing	1
35	RN5010-35	Gear	6
36	RN5010-36E	Pulling Head M8	1
	RN5010-36F	Pulling Head M10	1
	RN5010-36G	Pulling Head 5/16"	1
37	RN5008-37	Ball Bearing (M8, 5/16")	1
38	RN5010-38E	Ball Bearing (M8, 5/16")	1
	RN5010-38F	Ball Bearing (M10)	1
39	RN5010-39E	Ball Bearing (M8, 5/16")	1
	RN5010-39F	Ball Bearing (M10)	1
	RN5010-40E	Washer M8	1
40	RN5010-40F	Washer M10	1
	RN5010-40G	Washer 5/16"	1
41	RN5010-41E	Screw M8	1
	RN5010-41F	Screw M10	1
	RN5010-41G	Screw 5/16"	1
42	RN5010-42E	Driver Bit M8	1
	RN5010-42F	Driver Bit M10	1
	RN5010-42G	Driver Bit 5/16"	1
43	RN5008-43	Spring	1