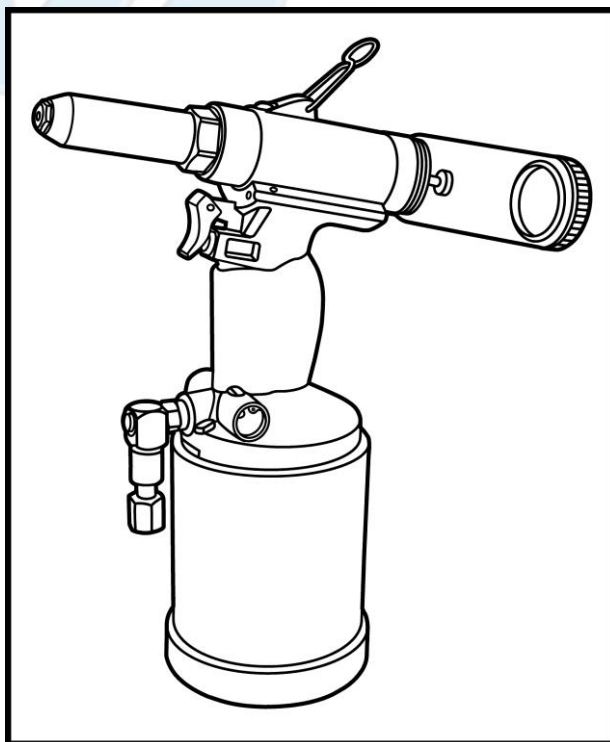




# SUMAKE PNEUMATIC TOOLS



## 5/16"(7.8mm) Air Hydraulic Riveter (Vacuum Type) ST-66167V

### Specification:

Riveting Capacity	3/16"(4.8mm), 7/32"(5.6mm) 1/4" (6.4mm), 5/16" (7.8mm)
Stroke Length	0.88" (22.5 mm)
Traction Power	3800 lbs (1723 kg)
Overall Height	12-1/4" (310mm)
Air Consumption	9 CFM (255 L/min)
Air Inlet (PT)	1/4" (6.35 mm)
Air Hose (I.D.)	3/8" (10 mm)
Air Pressure	90 psi (6.3 bar)
Net Weight	4.1 lbs (1.84 kg)

### Noise and Vibration:

Vibration EN ISO 20643	Noise EN ISO 15744	Remark
Load: < 2.5 m/s <sup>2</sup>  Uncertainty K= 1.5 m/s <sup>2</sup>	Sound Pressure Level No load: 68.7 dB(A)	Please always wear ear protector at environment noise level > 80 dB(A) due to risk of impaired hearing!
	Sound power level No load: 79.7 dB(A)	
	Uncertainty K= 3dB	

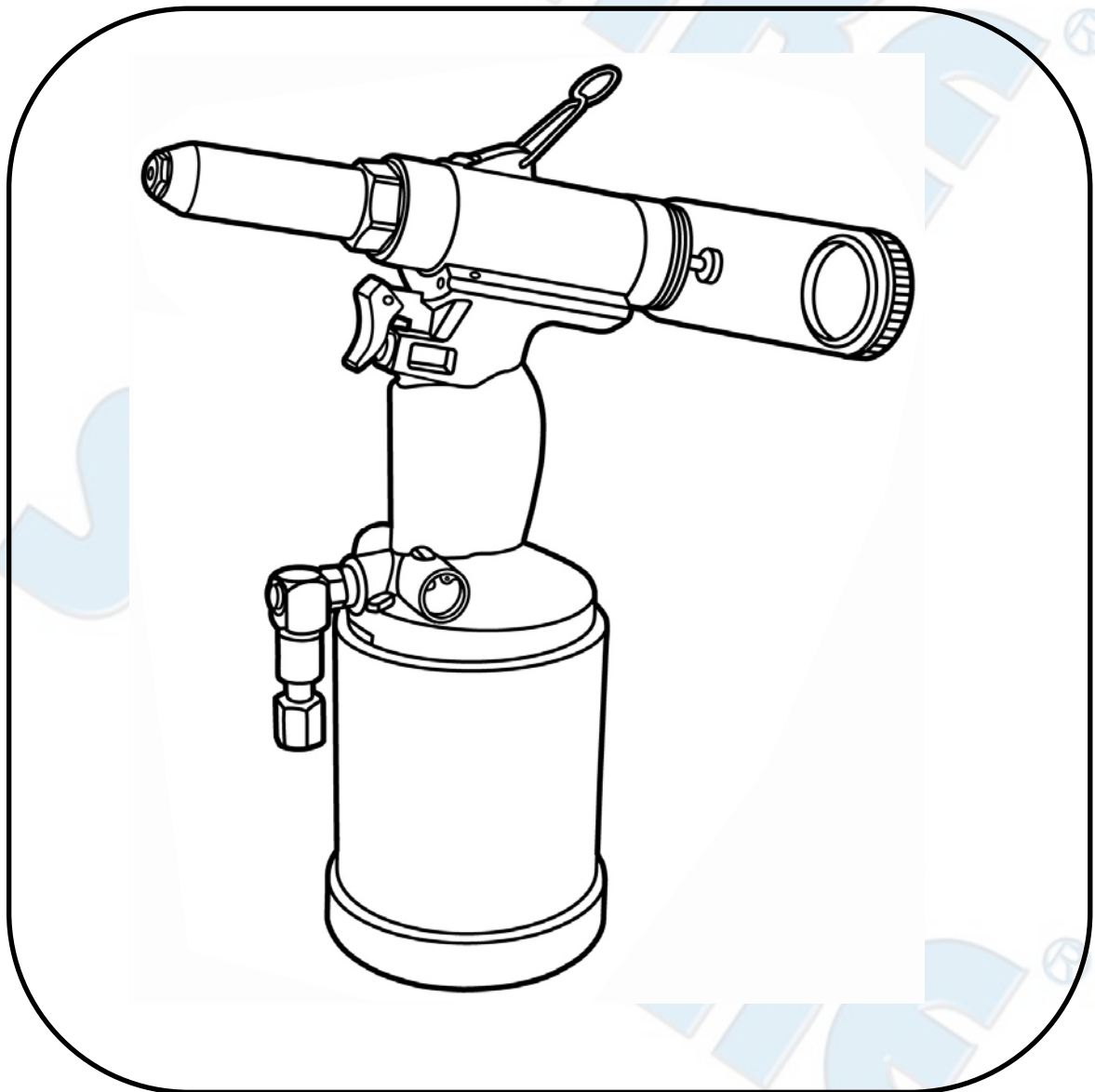
SUMAKE INDUSTRIAL CO., LTD

4F,NO.351,Yanguang St.,Neihu District TAIPEI, TAIWAN, ZIP:114-91

ST-66167V-S-2004B-C1F

## INSTRUCTION MANUAL

ITEM NO.: ST-66167V  
AIR HYDRAULIC RIVETER (VACUUM TYPE)



## Contents

<b>TOOL SPECIFICATION.....</b>	<b>2</b>
<b>GENERAL DESCRIPTION.....</b>	<b>3</b>
<b>SAFETY INSTRUCTIONS .....</b>	<b>4</b>
<b>OPERATION INSTRUCTIONS.....</b>	<b>5</b>
<b>MAINTENANCE.....</b>	<b>7</b>
<b>TROUBLESHOOTING .....</b>	<b>8</b>
<b>INCHES PART LIST FOR UV/88389X TOOL.....</b>	<b>9</b>

## List of Figures

<b><i>FIG 1 UV/88389X RIVET-PULL TOOL.....</i></b>	<b><i>3</i></b>
<b><i>FIG 2 DETAIL ILLUSTRATION OF CHANGE THE NOSEPIECE, JAW, AND JAW PUSHER. ....</i></b>	<b><i>4</i></b>
<b><i>FIG 3 DETAIL ILLUSTRATION OF SUCTION ADJUSTMENT AND CLEAN UP THE SAFETY CAP. ....</i></b>	<b><i>5</i></b>
<b><i>FIG 4 DETAIL ILLUSTRATION OF OIL TANK PLUG. ....</i></b>	<b><i>7</i></b>
<b><i>FIG 5 COMPONENTS OF UV/88389X RIVET-PULL TOOL.....</i></b>	<b><i>9</i></b>

## TOOL SPECIFICATIONS

### Technical Data

Model Of Tool.....	UV/88389X
Dimensions.....	12" X 12.2" X 4.29"
(Length X Height X Width)	(305mm X 310mm X109mm)
Weight.....	4.29 <i>lbs</i> [1.9 Kgs]
Air Inlet.....	1/4" NPT
Recommended Operating Pressure.....	85 to 95 <i>psi</i> [6 to 6.7 kg/cm2]
Air Consumption.....	4CFM
Pulling Load.....	3800lbs. @ 85psi
Max. Stroke.....	0.87 <i>in</i> [22.3 mm]
Rivet Nut Size.....	5/16",1/4",7/32", 3/16"

#### DANGER

Indicates an imminently hazardous situation which, if not avoided, will result in death or serious injury.

#### WARNING

Indicates a potentially hazardous situation which, if not avoided, will result in death or serious injury.

#### NOTE

Alerts the operator to useful information.

## GENERAL DESCRIPTION

The UV/88389X Rivet-Pull Tool illustrated in Fig. 1 with its pneumatic hydraulic system provides an efficient, lightweight, powerful, and quiet tool for rivet nut installation. It is designed to provide long life and trouble free services.

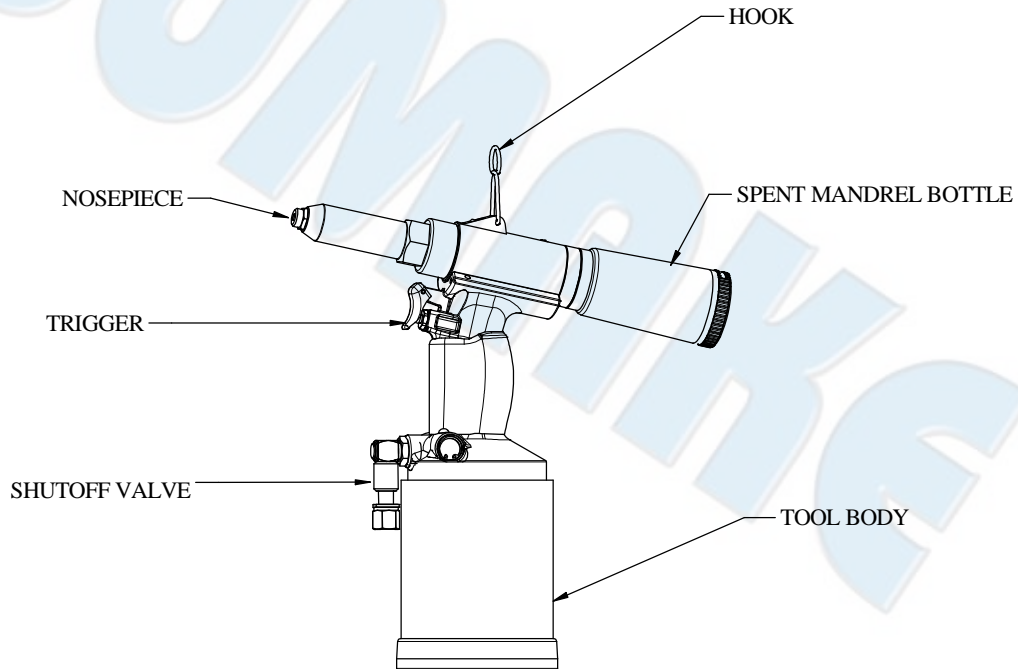


Fig. 1 UV/88389X Rivet-Pull Tool

## FEATURES

- **Heavy-duty use.**
- **Lightweight rivet-pull tool.**
- **High efficient, powerful and quiet installation tool.**
- **Easy maintenance and operation.**

## SAFETY INSTRUCTIONS

### DANGER



- Read this manual and understand all safety instructions before operating the tool. If you have any questions, please contact our authorized representatives.



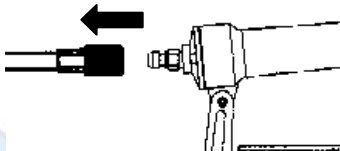
- Never allow the use of flammable gases (oxygen) as a power source for the tool. Use filtered, lubricated, and regulated compressed air only.



- Never use gasoline or other flammable liquids to clean the tool. Vapors in the tool can be ignited by a spark and cause the tool to explode.



- Do not exceed maximum permissible operating pressure of the tool (110 psig or 7.6 bars).



Disconnect the tool from air supply before servicing, adjusting, and during non-operation.

### WARNING



- At the workplace, always wear protective equipment such as Z87.1 safety glasses, hearing protection and head protection.



- Repairing and cleaning operations must be done when the tool is not fed.



## OPERATION INSTRUCTIONS

### A. To prepare UV/88389X

#### 1. Following the steps below to install the desired nosepiece:

- a. Loosen and remove the nosepiece (Index 37 in Figs. 2 & 5), then set up the desired nosepiece (Index 37~37-2 in Figs. 2 & 5) on frame head as shown in Fig. 2;
- b. Loosen and remove the frame head (Index 38 in Figs. 2 & 5) from the oil cylinder body (Index 53 in Figs. 2 & 5) as shown in Fig. 2;
- c. Loosen and remove the jaw housing (Index 39 in Figs. 2 & 5) from the jaw housing coupler (Index 42 in Figs. 2 & 5) as shown in Fig. 2;
- d. Take out the jaw and jaw pusher (Index 40, 41, in Figs. 2 & 5), then change on the matching the jaw and jaw pusher.
- e. Then assemble the jaw housing and adjust it's length to match the spanner gauge (Index 63 in Figs. 2 & 5) as shown in Fig. 2;
- f. Then assemble the frame head and lock it with the corresponding ring nut loosen before.

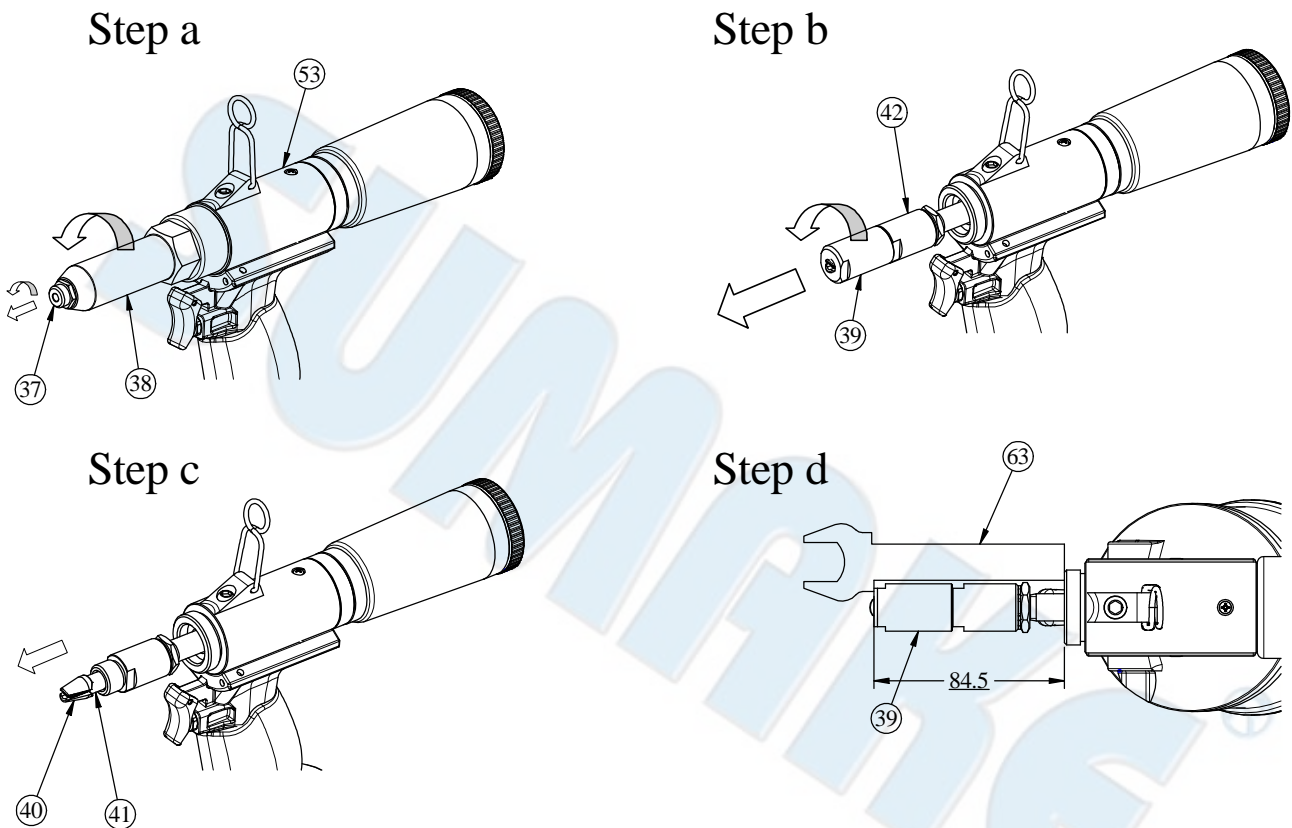
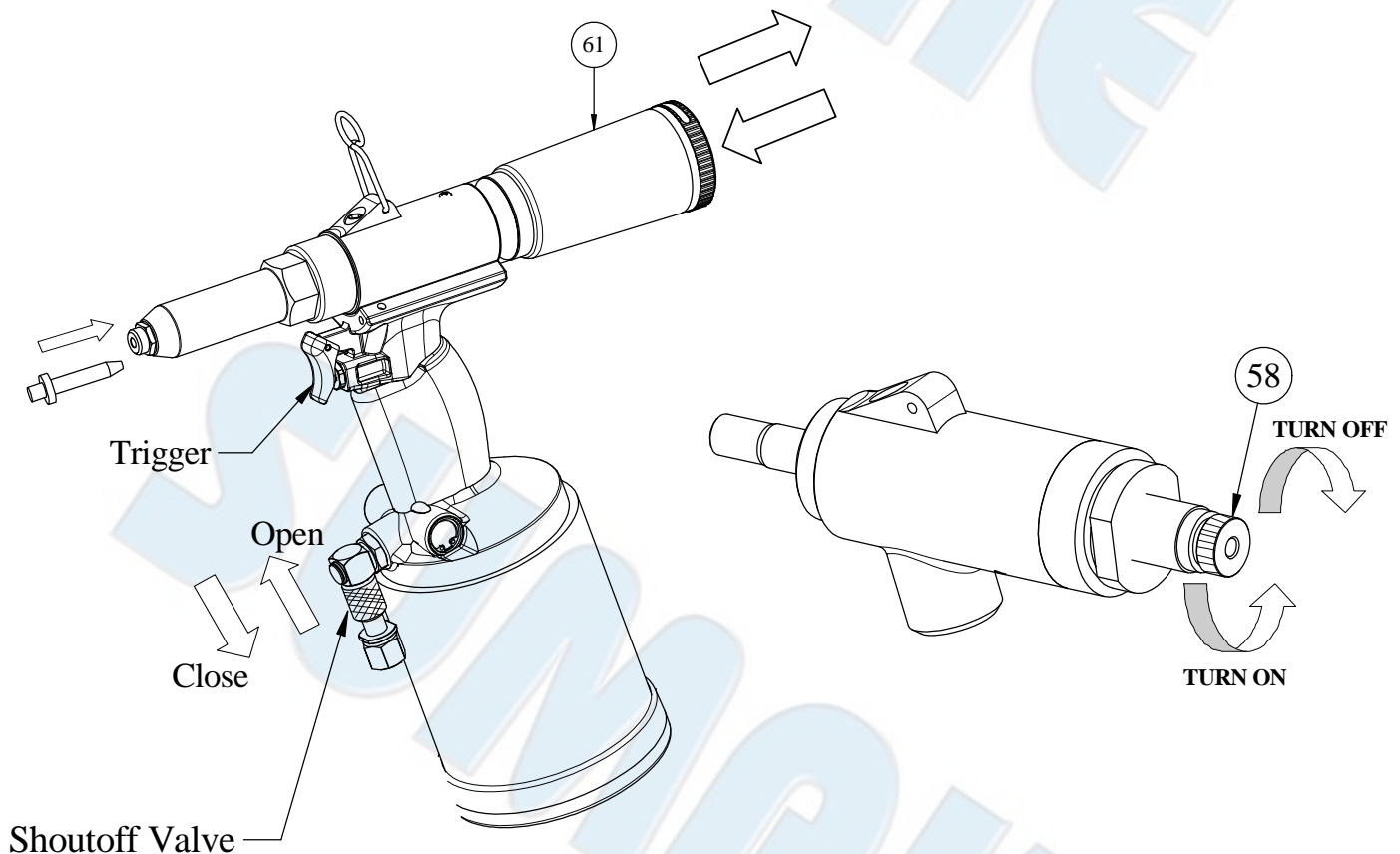


Fig. 2 Detail illustration of change the nosepiece, jaw, and jaw pusher.

## B. To operate UV/88389X

- Open the shutoff valve, let the air enter the UV/88389X rivet-pull tool.
  - ✳ When use the UV/88389X rivet-pull tool, the shutoff valve must be in the open state, otherwise there was no suction to inhale the rivet.
- Is it make suction switch is it control suction to come, anticlockwise direction it is heavy for suction to, the clockwise suction is diminished to fasten, can close the suction(Index 48 in Figs.3 & 5)
- Put in the matching rivet into the nosepiece, then pressing the trigger to pulls and discharge the rivet's rod into the spent mandrel bottle.
- When the spent mandrel bottle is filled with rivet's rod, then pulls out the mandrel bottle adapter (Index 61 in Figs.3 & 5) and pours out all of them.
- After clean all of junk, plug the mandrel bottle adapter into the spent mandrel bottle. Then follow the normal operating step to use it.



**NOTE** when pulling Ø4.8 rivets, regulate the suction switch to full throttle

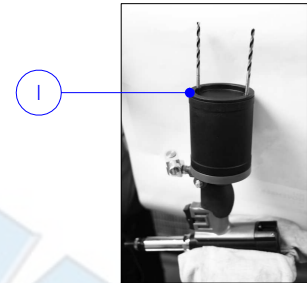
Fig. 3 Detail illustration of open the suction and clean up the spent mandrel bottle.



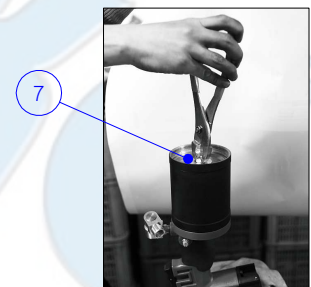
## Maintenance

The maintenance required when the tool of UV/88389X pulling strength were become lower, it is only necessary to add ISO VG46 oil or similar grade oil into the hydraulic system., the operation steps as below:

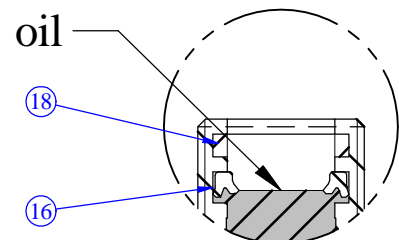
1. Unscrew and remove the front head (Index 38) Turn the tool upside down and well fixed, then use spanner remove No.1 parts.



2. Remove No.7 parts.



3. Take the oil pot fill the oil up to top of No.16 parts, installed No.7 parts press up and down twice ,get the No.7 out, refill the oil reach the top of No.16.



4. Lubricate all connected O Ring area by grease, No.7 insert it.

5. . Screw on No.1 ,Then assemble the jaw housing and adjust it's length to match the spanner gauge and fix from (Index 38)

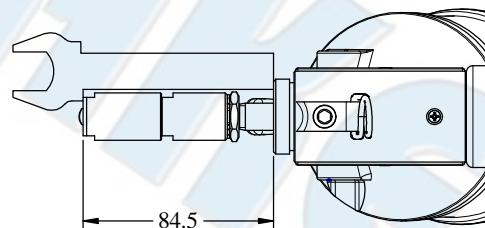
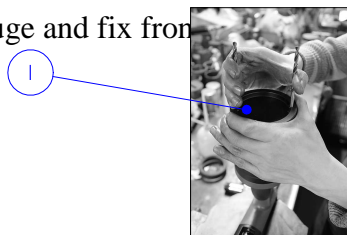


Fig. 4 ADD OIL.

## TROUBLESHOOTING

Stop using the tool immediately if any of the following problems occur. Any repairs or replacements must be done by a qualified person or an authorized service center only.

PROBLEM	CAUSE	REMEDY
Rivet jammed	Wrong size rivet.	The different rivets need to change the compared nosepiece, jaw and jaw pusher. Please read the operation instruction, and check the rivet's size again, see Fig. 2
	Had some filings jam in the 39 part's internal.	Using the adjustable wrench or 62 part to dismantle the part 38, then using the 19mm spanner to dismantle the part 39. Use hairbrush and airbrush to clean out filing; then smear the oil on them. Lock back the 38 and 39 part, see the Fig. 2d.
	Had some filings stick on the 37 part's top.	When you pull the aluminum rivet, it is happened frequently. Use the sharp thing to cancel the stuck filing.
No suction	The shutoff valve was not open.	Please see the Fig-3.
Air leaking.	Damaged o-rings.	O-rings need to be replaced.
	Loose screws.	Screws need to be tightened.
Frame Head (38) out of order.	Parts (16) (18) are damaged or deformed.	New parts (16)(18) need to be replaced.
Tool runs slow or has loss of power.	Air feeding tube loose.	Re-install and tighten the tube.
	Exhaust port in cap is blocked.	Exhaust port(20) needs to be cleaned.
	Operating pressure is too low.	Increase the operating pressure to 85-95psi.

## ADVICE

1. Clean out the parts 38~42, and smear the oil in every 500 times' operated.
2. Advise you to change the parts 40~43 in every 2000 times, when to pull the 1/4" (Ø6.4)stainless steel rivets
3. The part 59(spent mandrel bottle) need to clean out, when it filled 35 rivets' residues.



## EC DECLARATION OF CONFORMITY

We: **SUMAKE INDUSTRIAL CO., LTD.**

**4F, No. 351, Yangguang St., Neihu District, Taipei City, Taiwan**

declare in sole responsibility that the equipment

Equipment : **5/16"(7.8MM)AIR HYDRAULIC RIVETER (VACUUM TYPE)**

Model/ Serial No. : **ST-66167V**

to which this declaration applies, complies with these normative documents:

- Machinery Directive: 2006/42/EC

and conforms to the following EN standard,

- EN ISO 12100: 2010
- EN ISO 11148-1:2011

Name and Signature/Position

Mike Su – Managing Director

Date and Place

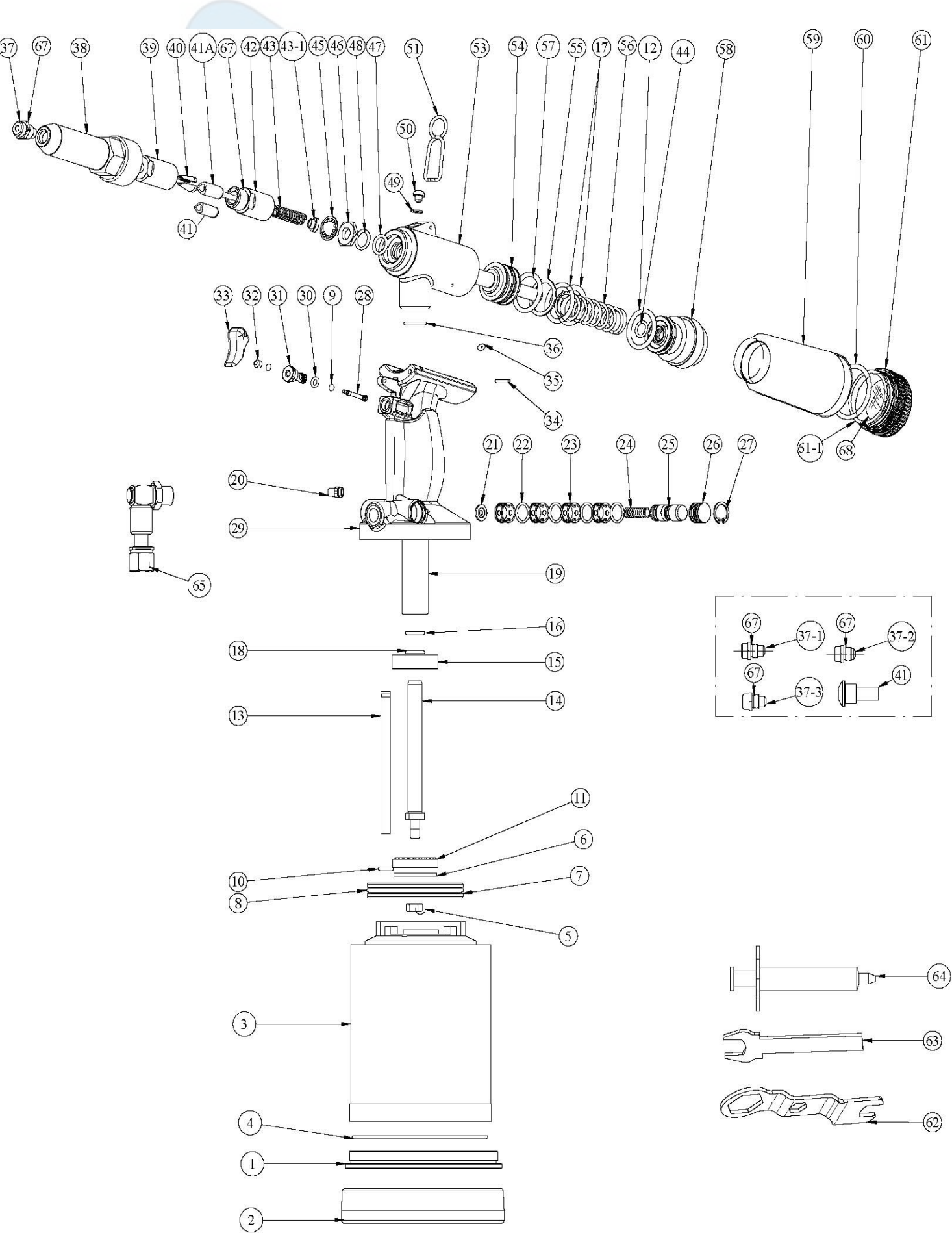
2012/9/14

Taipei, Taiwan

ST-66167V-D-2004B-C1F

# ST-66167V

## 5/16"(7.8MM) AIR HYDRAULIC RIVETER (VACUUM TYPE)



# ST-66167V

## 5/16"(7.8MM) AIR HYDRAULIC RIVETER (VACUUM TYPE)

### PARTS LIST

No.	Parts No.	Description	Q'ty	No.	Parts No.	Description	Q'ty
1	66167V-01	Cylinder Cap	1	37	66167V-37-2	Nosepiece 3/16" (Φ4.8mm)	1
2	66167V-02	Rubber Bottom	1		66167V-37-3	Nosepiece 5/16" (Φ7.8mm)	1
3	66167V-03	Air Cylinder Body	1	38	66167V-38	Frame Head	1
4	66167V-04	O-Ring	1	39	66167V-39	Jaw Housing	1
5	66167V-05	Nut	1	40	66167V-40	Jaw	3
6	66167V-06	Washer	1	41	66167V-41	Jaw Pusher 5/16" (Φ7.8mm)	1
7	66167V-07	Air Piston	1	41A	66167V-41A	Jaw Pusher 1/4" (Φ6.4mm), 7/32" (Φ5.6mm), 3/16" (Φ 4.8mm)	1
8	66167V-08	O-Ring	1				
9	66167V-09	O-Ring	2	42	66167V-42	Jaw Housing Coupler	1
10	66167V-10	O-Ring	1	43	66167V-43	Spring	1
11	66167V-11	Crash Washer	1	43-1	66167V-43-1	Spring Collar	1
12	66167V-12	O-Ring	3	44	66167V-44	O-Ring	2
13	66167V-13	Tube	1	45	66167V-45	Case Washer	1
14	66167V-14	Rod	1	46	66167V-46	Case Lock Nut	1
15	66167V-15	Stem Nut	1	47	66167V-47	Seal	1
16	66167V-16	Seal	1	48	66167V-48	O-Ring	1
18	66167V-18	Wear Ring	1	49	66167V-49	Oil Seal Washer	1
19	66167V-19	Stem	1	50	66167V-50	Hexagon Socket Screw	1
20	66167V-20	Muffler	1	51	66167V-51	Hook	1
21	66167V-21	Pad	1	53	66167V-53	Oil Cylinder Body	1
22	66167V-22	O-Ring	4	54	66167V-54	Piston Rod II	1
23	66167V-23	Cage	4	55	66167V-55	Back-Up Ring	1
24	66167V-24	Spring	1	56	66167V-56	Spring	1
25	66167V-25	Valve	1	57	66167V-57	O-Ring	1
26	66167V-26	Valve Cap	1	58	66167V-58	Frame Cap Nut	1
27	66167V-27	Retaining Ring	1	59	66167V-59	Spent Mandrel Bottle	1
28	66167V-28	Valve Piston	1	60	66167V-60	O-Ring	1
29	66167V-29	Handle Body	1	61	66167V-61	Mandrel Bottle Adapter	1
30	66167V-30	O-Ring	1	61-1	66167V-61-1	Silencer	1
31	66167V-31	Trigger Insert	1	62	66167V-62	Spanner	1
32	66167V-32	Trigger Head	1	63	66167V-63	Spanner Gauge	1
33	66167V-33	Trigger	1	64	66167V-64	Oil Can	1
34	66167V-34	Spring Pin	1	65	66167V-65	Shutoff Valve	1
35	66167V-35	O-Ring	1	67	66167V-67	O-Ring	4
36	66167V-36	O-Ring	1	68	66167V-68	Cushion	1
37	66167V-37	Nosepiece 1/4" (Φ6.4mm)	1				
	66167V-37-1	Nosepiece 7/32" (Φ5.6mm)	1				





Read all these safety instructions before operating this product and save these instructions.

The tool has been manufactured in conformity with the instruction of EU machine directive. The EU mark will be considered void in the event of inexpert repairs, the use of non-original parts and in case of non-observance of the safety instructions in the user's manual.

Possible direct or indirect consequential damages are not the responsibility of SUMAKE Industrial co., Ltd.

#### **General safety rules:**

1. Watch the tool at all times when in use.
2. People under the influence of alcohol or drugs are not allowed to use, repair or maintain the tool.
3. Keep unqualified persons, children, etc. away from the tool.
4. Keep work area clean and with sufficient daylight or artificial lighting. The work area on which the machine is used must be cleaned up. Disorder is a potential cause of accidents.
5. Danger of explosion. Never use oxygen and combustible gas as an air supply for the tool which may be ignited by spark and cause fire or explosion.
6. Never use gasoline or other flammable liquids to clean the tool.
7. Do not use air tools in potentially explosive atmospheres such as in the presence of flammable liquids, cleaning solvents, fluid energy or stored gases.
8. Do not expose air tools to rain. Do not use air tools in damp or wet locations.
9. When a fault or failure is detected, the tool must immediately be disconnected from the air supply and returned for repair.
10. It is not permitted to modify the tool in any way.
11. When not in use, keep tools in a dry place, either locked up or in a high place, out of the reach of children.
12. Do not force small air tools to do the job of a heavy –duty task. Do not use air tool for purpose of which was not intended.
13. Wear suitable ear protection at environment noise level >80dB(A) and safety spectacles when using the tool. Always wear approved safety goggles if work in dusty. This also applies to other persons in the nearby vicinity.
14. Do not wear loose clothing or jewelry. They can be caught in moving parts. Rubber gloves and non-skid foot wear are recommended when working outdoors. Wear protective hair covering to contain long hair.
15. Keep proper footing and balance at all times.
16. Use clamps or a vice to hold work-piece. It is safer than using your hand and free both hands to operate the air tool.
17. When not use, before performing service or changing accessories, please disconnect tool from air compressor.
18. Do not carry plugged in air tool with your finger on the switch trigger. Be sure switch is in the "OFF" position when connecting to air supply.
19. Watch what you are doing. Use common sense, even unsafe situation or unbalanced positions, particularly when you are tired.
20. Air powered tools can vibrate in use. Vibration, repetitive motions or uncomfortable positions may be harmful to your hands or arms. Stop using any tool if discomfort, tingling feeling or pain occurs. Seek medical advice before resuming use.
21. Multiple hazards. Read and understand the safety instructions before installing, operating, repairing, maintaining, changing accessories on, or working near the power tool. Failure to do so can result in serious bodily injury.
22. Only qualified and trained operators should install, adjust or use the power tool.
23. Do not modify this power tool. Modifications may reduce the effectiveness of safety measures and increase the risks to the operator.
24. Do not discard the safety instructions – give them to the operator.
25. Do not use the power tool if it has been damaged.
26. Tools shall be inspected periodically to verify the ratings and markings required by this document are legibly marked on the tool. The employer/user shall contact the manufacturer to obtain replacement marking labels when necessary.

#### **Safety precautions for projectile hazards**

1. Disconnect the power tool from the energy source when changing inserted tool or accessories.
2. Failure of the work piece, or accessories, or even of the inserted tool itself may generate high velocity projectiles.
3. Always wear impact-resistant eye protection during operation of the tool. The grade of protection required should be assessed for each use.
4. The risks to others should also be assessed at this time.
5. Ensure that the work piece is securely fixed.
6. Check that the protection against ejection of fastener and/or stem is in place and is operative.
7. Warn against the possible forcible ejection of installation mandrels from the front of the power tool.

#### **Safety precautions for operating hazards**

1. Use of the tool may expose the operator's hands to hazards including crushing, impacts, cuts and abrasions and heat. Wear suitable gloves to protect hands.
2. Operators and maintenance personnel must be physically able to handle the bulk, weight and power of the tool.
3. Hold the tool correctly: be ready to counteract normal or sudden movements – have both hands available.
4. Maintain a balanced body position and secure footing.
5. Release the start and stop device in the case of an interruption of the energy supply.
6. Use only lubricants recommended by the manufacturer.
7. That unsuitable postures may not allow counteracting of normal or unexpected movement of the tool.
8. If the power tool is fixed to suspension device make sure that the fixation is secure.
9. Risk of crushing if nose equipment is not fitted.

### **Safety precautions for repetitive motions hazards**

1. When using a power tool, the operator may experience discomfort in the hands, arms, shoulders, neck, or other parts of the body.
2. While using a power tool, the operator should adopt a comfortable posture. Maintain secure footing and avoid awkward or off-balanced postures. The operator should change the posture during extended tasks which may help avoid discomfort and fatigue.
3. If the operator experience symptoms such as persistent or recurring discomfort, pain, throbbing, aching, tingling, numbness, burning sensation or stiffness, these warning signs should not be ignored. The operator should tell the employer and consult a qualified health professional.

### **Safety precautions for accessory hazards**

1. Disconnect power tool from energy supply before changing the inserted tool or accessory.
2. Only use sizes and types of accessories and consumables that are recommended by the power tool manufacturer.

### **Safety precautions for workplace hazards**

1. Slips, trips and falls are major causes of workplace injury. Be aware of slippery surfaces caused by use of the tool and also of trip hazards caused by the air line or hydraulic hose.
2. Proceed with care in unfamiliar surroundings. Hidden hazards may exist, such as electricity or other utility lines.
3. This power tool is not intended for use in potentially explosive atmospheres and is not insulated from coming into contact with electric power.
4. Make sure there are no electrical cables, gas pipes etc. that could cause a hazard if damaged by use of the tool.

### **Safety precautions for dust and fume hazards**

1. Dusts and fumes generated when using power tools can cause ill health (for example: cancer, birth defects, asthma and/or dermatitis); risk assessment of these hazards and implementation of appropriate controls of is essential.
2. Risk assessment should include dust created by the use of the tool and the potential for disturbing existing dust.
3. Operate and maintain the power tool as recommended in these instructions, to minimise dust or fume emissions.
4. Direct the exhaust so as to minimise disturbance of dust in a dust filled environment
5. Where dusts or fumes are created, the priority shall be to control them at the point of emission.
6. All integral features or accessories for the collection, extraction or suppression of airborne dust or fumes should be correctly used and maintained in accordance with the manufacturer's instructions.
7. Use respiratory protection as instructed by your employer or as required by occupational health and safety regulations.

### **Safety precautions for noise hazards**

1. Unprotected exposure to high noise levels can cause permanent, disabling, hearing loss and other problems such as tinnitus (ringing, buzzing, whistling or humming in the ears).
2. Risk assessment of these hazards and implementation of appropriate controls of is essential.
3. Appropriate controls to reduce the risk may include actions such as damping materials to prevent work pieces from 'ringing'.
4. Use hearing protection as instructed by your employer or as required by occupational health and safety regulations.
5. Operate and maintain the power tool as recommended in these instructions, to prevent an unnecessary increase in noise.
6. If the tool has a silencer, always ensure it is in place and in good working order when the tool is operating.
7. Select, maintain and replace the consumable/inserted tool as recommended in these instructions, to prevent an unnecessary increase in noise.

### **Safety precautions for vibration hazards**

1. Exposure to vibration can cause disabling damage to the nerves and blood supply of the hands and arms.
2. Wear warm clothing when working in cold conditions and keep your hands warm and dry.
3. If you experience numbness, tingling, pain or whitening of the skin in your fingers or hands, stop using the assembly power tool for non-threaded mechanical fasteners, tell your employer and consult a physician.
4. Support the weight of the tool in a stand, tensioner or balancer, because the operator can then use a lighter grip to support the tool.

### **Additional safety instructions for pneumatic power tools**

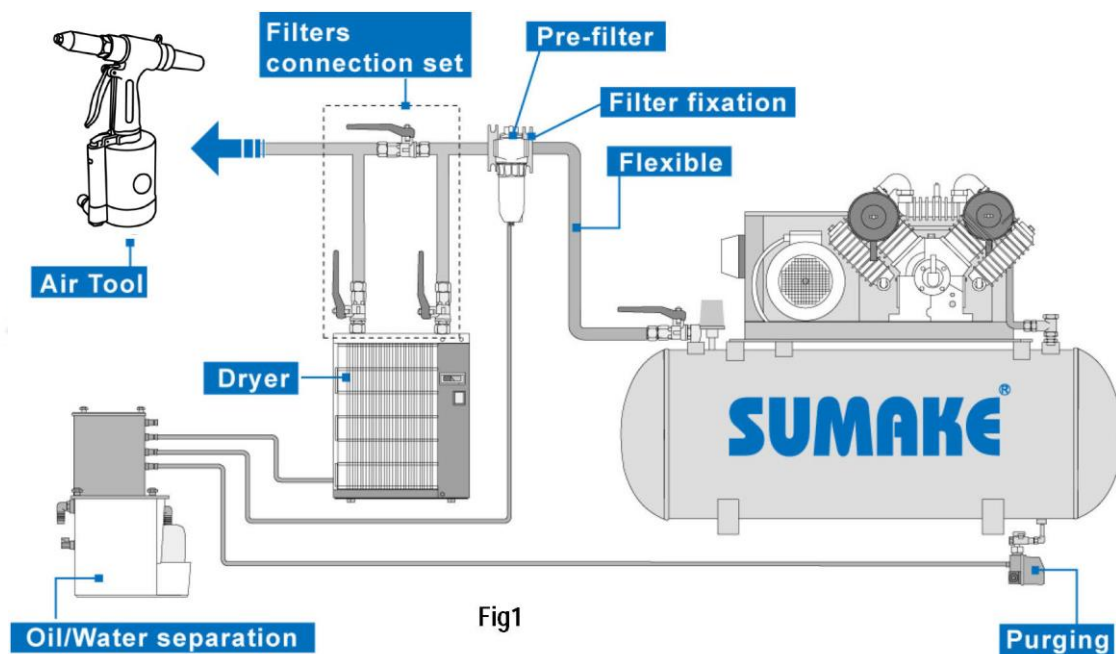
1. Always shut off air supply, drain hose of air pressure and disconnect tool from air supply when not in use, before changing accessories or when making repairs.
2. Never direct air at yourself or anyone else.
3. Whipping hoses can cause severe injury. Always check for damaged or loose hoses and fittings.
4. Cold air shall be directed away from the hands.
5. Whenever universal twist couplings (claw couplings) are used, lock pins shall be installed and whipcheck safety cables shall be used to safeguard against possible hose-to-tool and hose-and-hose connection failure.
6. Do not exceed the maximum air pressure stated on the tool.
7. Never carry an air tool by the hose.

### **Specific safety instructions**

Warnings shall be given about any specific or unusual hazards associated with the use of the power tool. Such warnings shall indicate the nature of the hazard, the risk of injury and the avoidance action to take.



## General preparation and connection:



1. Before connecting the air hose, apply 4 to 5 drops of SAE 10W-20 (ISO Viscosity Grade 46/32) Hydraulic Oil at the air inlet. Also, every 3 to 4 hours of operation, oiling is necessary. Twist Teflon thread tape to ensure a proper seal air inlet. Then tighten the air coupler into air tool.
2. The supplied compressed air must be clean and dry, with the appropriate oil mist. Use an air treatment unit; filter, regulator and lubricator.
3. Please refer Fig.1 illustration shows the correct mode of connection to the air supply system which will increase the efficiency and useful life of the tool.
4. The quick connect coupling and hose must have sufficient air flow capacity. We recommend an air hose with a diameter of 10mm (3/8").
5. To ensure a good performance. The operation pressure at the compressed air inlet should not exceed 6.3bar (90psi) (unless indicated otherwise). Higher operating pressures may cause damaged or excessive wear. Operating pressures below 5.3bar may cause pressure or power loss.



### Risk of injury

1. Compressed air can inflict serious injuries. Therefore never point the air hose at another person or yourself.
2. Shut – off the air supply and disconnect the tool in case:
  - You want to change or replace accessories.
  - You want to clean, repair or maintain the tool.
  - The tool is not going to use for some times.
3. Check compressed air hose before use. If it is damaged, broken, torn, or deformed, the hose is not to be connected to the tool.
4. Always check the pneumatic couplings before using the tool. If they show signs of damage, fracture, cracking or excessive corrosion, the respective tool or the air hose is not to be used.
5. Use only qualified adapters and connectors, In case of wear they are to be replaced immediately.
6. Only use air pipes that are fit for the use at maximum pressure.

### Maintenance instruction:

1. Dry the filter (fig1) and the air inlet of the tool.
2. Lubricate the quick connect coupling to prevent blocking.
3. Air tool require lubrication throughout the life of the tool. The air motor and bearing uses compressed air to start the tool. The moisture in compressed air will rust the air motor; you must lubricate the motor daily.
4. Avoid storing the tool in a location subject to high humidity. If the tool is left as it is used, the residual moisture inside the tool can cause rust.
5. Before storage, lubricate tool and run it for a few seconds.
6. Regular inspection of spindles, threads, and clamping devices in respect of wear and tolerances for location of abrasive products.
7. If the tool is too seriously damage to be used anymore, recycle raw material instead of disposing as waste. The machine, accessories and packaging should be sorted for environmental-friendly recycling. Check with your local authority or retailer for recycling advice.
8. Keep Safety Cap free of spent mandrels.
9. Insure that jaws are clean and free of metal shavings, dirt and oil.
10. Keep oil at optimum level. With use of tool there may be a gradual loss of oil. When you notice a reduction in the stroke, you need to add a small amount of oil.

